

Converting Colors

XYZ(43.9873, 41.0578, 34.5942)

Have a look what the booklet for
XYZ(43.9873, 41.0578, 34.5942)
contains.

XYZ(43.9820, 40.9571, 34.4416)	3
<i>Conversions</i>	4
<i>Details</i>	6
<i>Harmonies</i>	12
<i>Previews</i>	24
<i>Color Blindness Simulation</i>	28
<i>CSS Examples</i>	31

Color

**XYZ(43.9820, 40.9571,
34.4416)**

Conversions

Conversions Part 1

Format	Color
Hex	CFA196
RGB	207, 161, 150
RGB Percent	81%, 63%, 59%
CMY	0.1882, 0.3686, 0.4118
CMYK	0.00, 0.22, 0.28, 0.19
HSL	12°, 37%, 70%
HSV	12°, 28%, 81%
XYZ	43.9820, 40.9571, 34.4416
YIQ	173.5000, 30.9470, 6.3310

Conversions

Conversions Part 2

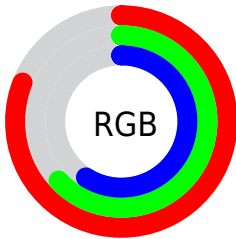
Format	Color
R _Y B	207, 164, 150
Decimal	13607318
CIE Lab	70.15, 15.42, 12.26
CIE LCh	70, 19.696, 38.481
Yxy	40.9571, 0.3684, 0.3431
Android (android.graphics.Color)	4291797398 (0xFFCFA196)
YUV	173.5000, -11.5855, 29.3795
Hunter-Lab	63.9977, 10.6769, 12.8904

Details

The XYZ color **43.9820, 40.9571, 34.4416** is a light color, and the websafe version is hex **CC9999**. A complement of this color would be **43.5796, 50.4675, 66.4760**, and the grayscale version is **40.0230, 42.1073, 45.8549**.

A 20% lighter version of the original color is **76.6950, 74.7314, 67.5091**, and **20.6697, 18.5135, 14.2884** is the 20% darker color. If you saturate the color by 10%, you get **39.7337, 34.8963, 25.5155**, and if you desaturate by 10%, it is **48.9170, 47.9194, 45.0502**.

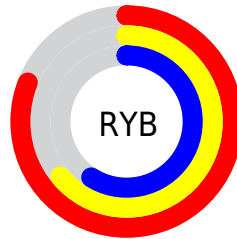
Distribution



Red (81%)

Green (63%)

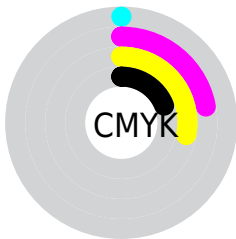
Blue (59%)



Red (81%)

Yellow (64%)

Blue (59%)

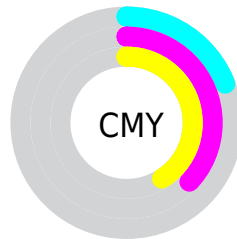


Cyan (0%)

Magenta (22%)

Yellow (28%)

Black (19%)



Cyan (19%)


Magenta (37%)


Yellow (41%)

Brightness & Saturation Gradients


These gradients show how the XYZ color 43.9820, 40.9571, 34.4416 changes by changing the brightness by 10 percent. The first figure shows a shift by +10% for each color and the second figure -10%.

Similar to the brightness gradients but the following saturation gradients show a change of the XYZ color 43.9820, 40.9571, 34.4416 by changing the saturation by 10% instead.


 43.9820, 40.9571,
34.4416

 43.9820, 40.9571,
34.4416


353.4883,
350.1413, 336.9257

 30.8542, 28.2856,
22.9530

 80.4372, 76.6188,
67.7615

 20.6391, 18.5410,
14.3538


 104.4953,
100.3777, 90.4299

 12.9714, 11.3391,
8.2256


132.9275,
128.6012, 117.6619

 7.4857, 6.2954,
4.1498

166.0992,
161.6737, 149.8761

 3.8167, 3.0255,
1.7079

204.3758,
199.9795, 187.4911

 1.5990, 1.1451,
0.3661

248.1226,

 0.3917, 0.0161,

243.9032, 230.9253

0.0000

297.7050,
293.8289, 280.5973

■ 0.0000, 0.0000,
0.0000

■ 43.9820, 40.9571,
34.4416

■ 43.9820, 40.9571,
34.4416

■ 39.7337, 34.8963,
25.5155

■ 48.9170, 47.9194,
45.0502

■ 36.1379, 29.6945,
18.1827

■ 54.5642, 55.8123,
57.4191

■ 33.1624, 25.3140,
12.3493

■ 60.9519, 64.6705,
71.6246

■ 30.7710, 21.7123,
7.9110

■ 68.1059, 74.5254,
87.7374

■ 28.9233, 18.8427,
4.7494

■ 76.0505, 85.4067,
105.8247

■ 27.5736, 16.6534,
2.7268

■ 79.5422, 92.0054,
108.1742

■ 26.6637, 15.0838,
1.6526

■ 26.4897, 14.7804,
1.4567

Harmonies

Analogous

The Analogous color harmony consists of three colors that are next to each other on the color wheel.



45.3826, 40.9571, 42.0297



43.9820, 40.9571, 34.4416



41.2453, 40.9571, 30.0430

Triad

The Triadic color harmony groups three colors that are evenly spaced from another and form a triangle on the color wheel.



43.9820, 40.9571, 34.4416



33.4452, 40.9571, 38.3990



39.8493, 40.9571, 64.5448

Complementary

The Complementary color scheme is a pair of colors which are on the opposite of each other on the color wheel.



43.9820, 40.9571, 34.4416



43.5796, 50.4675, 66.4760

Split Complementary

Split-complementary colors differ from the complementary color scheme. The scheme consists of three colors, the original color and two neighbors of the complement color.



36.7001, 40.9571, 63.2199



43.9820, 40.9571, 34.4416



33.1173, 40.9571, 47.2633

Square

The Square scheme is like the rectangle color scheme, but the four colors are evenly spaced on the color wheel.



43.9820, 40.9571, 34.4416



35.1996, 40.9571, 32.0990



34.2777, 40.9571, 56.5710



42.9118, 40.9571, 59.9751

Rectangle

The Rectangle color scheme consists of four colors that form a rectangle on the color wheel.



43.9820, 40.9571, 34.4416



39.0929, 40.9571, 29.1074



34.2777, 40.9571, 56.5710



38.7645, 40.9571, 64.7853

Sweetspot

The Sweet Spot groups the original color and five complimentary colors.



43.9831, 40.9590, 34.4424



86.9091, 88.6980, 90.8344



46.6654, 39.0892, 57.6391



18.2931, 18.5545, 18.7616



0.0000, 0.0000, 0.0000



20.3446, 21.4041, 23.3091

Same Dimension

The Same Dimension uses a secret algorithm to generate beautiful new colors.



43.9831, 40.9590, 34.4424



66.3669, 59.7757, 46.4931



49.4243, 51.8414, 36.2562



11.9908, 12.1724, 12.3296



16.7422, 9.4174, 0.9353



0.9920, 0.6383, 0.0709

Inverse Universe

The Inverse Universe completely reimagines the original color for something new.



43.5796, 50.4675, 66.4760



65.6067, 77.4505, 106.0994



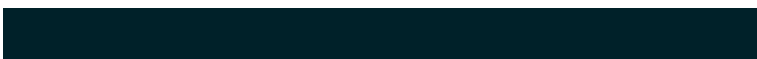
37.8525, 39.0133, 64.5669



11.9564, 13.0030, 15.1233



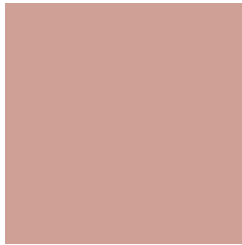
15.8732, 20.3930, 40.2921



0.9385, 1.2422, 2.2699

Previews

White Background



This preview shows how the XYZ color 43.9820, 40.9571, 34.4416 looks on a white background.

Color Contrast Check

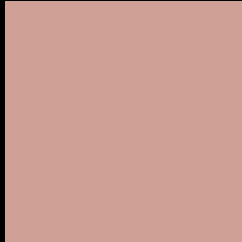
Large Text (above 18pt) WCAG AA × Fail

Any Text WCAG AA × Fail

Large Text (above 18pt) WCAG AAA × Fail

Any Text WCAG AAA × Fail

Black Background



This preview shows how the XYZ color 43.9820, 40.9571, 34.4416 looks on a black background.

Color Contrast Check

Large Text (above 18pt) WCAG AA ✓ Pass

Any Text WCAG AA ✓ Pass

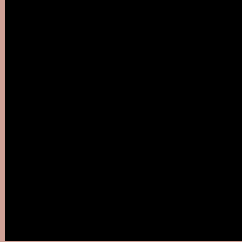
Large Text (above 18pt) WCAG AAA ✓ Pass

Any Text WCAG AAA ✓ Pass

If you want to check with other color combinations, try the [Color Contrast Checker](#).

XYZ 43.9820, 40.9571, 34.4416

Background



This preview shows how black text looks on a background with the XYZ color 43.9820, 40.9571, 34.4416.



This preview shows how white text looks on a background with the XYZ color 43.9820, 40.9571,

Color Blindness Simulation

Color vision deficiency is a very complex topic, and I could not describe the different causes any better than Wikipedia does, so if you want to learn more, you should check out their [article about color blindness](#).

Dichromacy



Original Color

43.9820, 40.9571, 34.4416

Protanopia

39.0697, 41.0761, 36.8796

Deuteranopia

41.6449, 40.8160, 34.1171



Tritanopia

45.7771, 40.9113, 43.5142

Trichromacy



Original Color

43.9820, 40.9571, 34.4416

Protanomaly

40.5548, 40.7562, 35.8663

Deuteranomaly

42.5197, 41.0002, 34.1066

Tritanomaly

45.0214, 40.8505, 40.1624

Monochromacy



Original Color

43.9820, 40.9571, 34.4416

Achromatopsia

40.2316, 42.3268, 46.0938

Achromatomaly

41.2292, 41.5316, 41.4407

CSS Examples

Text

The CSS property to change the color of the text to XYZ 43.9820, 40.9571, 34.4416 is called "color". The color property can be set on classes, ids or directly on the HTML element.

This example shows how text in the color `rgb(207, 161, 150)` looks like.

```
.text, #text, p{  
    color:rgb(207, 161, 150)  
}
```

If you want to add a text shadow in that color use the text-shadow property, you can generate a text shadow directly with our [CSS Text Shadow Generator](#).

Here you see how black text with a 4 pixel rgb(207, 161, 150) colored shadow looks like.

```
.shadow{ text-shadow: 4px 4px 2px rgb(207, 161, 150) }
```

Border

The CSS property to change the border of an element to XYZ 43.9820, 40.9571, 34.4416 is called "border". The border property can be set on classes, ids or directly on the HTML element.

This example shows the color as border, it can be applied via the CSS property "border" or "border-color".

```
.border, #border, table{ border:4px solid rgb(207, 161, 150) }
```


If only the border color should be changed use the property `border-color`.

```
.border{ border-color:rgb(207, 161, 150) }
```

If you want to add a box shadow in that color use:

Here you see how a box with a 4 pixel `rgb(207, 161, 150)` colored shadow looks like.

```
.boxshadow{ -moz-box-shadow:4px 4px 4px  
4px rgb(207, 161, 150); -webkit-box-  
shadow:4px 4px 4px 4px rgb(207, 161, 150);  
box-shadow:4px 4px 4px 4px rgb(207, 161,  
150) }
```

Background

The CSS property to change the background color of an element to XYZ 43.9820, 40.9571, 34.4416 is called "background". The background property can be set on classes, ids or directly on the HTML element.

```
.background, #background, body{  
background: rgb(207, 161, 150) }
```

If only the background color should be changed can be used:

```
.background{ background-color: rgb(207,  
161, 150) }
```

This example shows the color as background, it is applied via the CSS property "background".

To optimize and compress your CSS code, you can use our [online CSS compressor and optimizer](#) based on csstidy. If you want to create a linear or radial gradient as background or border, check our [CSS Gradient Generator](#).

Hey! You found this booklet interesting? Support Converting Colors with the new Membership Option!

The pro membership hides all ads, plus gives you double the colors in the color bucket, and more awesome pro features!

[Learn more, Memberships starting at \\$2.50/m!](#)

**Follow me
on Twitter!**

@ConvertingColor