

Converting Colors

XYZ(43.9978, 41.3089, 34.9874)

Have a look what the booklet for
XYZ(43.9978, 41.3089, 34.9874)
contains.

XYZ(43.9598, 41.1968, 34.9130)	3
<i>Conversions</i>	4
<i>Details</i>	6
<i>Harmonies</i>	12
<i>Previews</i>	24
<i>Color Blindness Simulation</i>	28
<i>CSS Examples</i>	31

Color

**XYZ(43.9598, 41.1968,
34.9130)**

Conversions

Conversions Part 1

Format	Color
Hex	CEA297
RGB	206, 162, 151
RGB Percent	81%, 64%, 59%
CMY	0.1922, 0.3647, 0.4078
CMYK	0.00, 0.21, 0.27, 0.19
HSL	12°, 36%, 70%
HSV	12°, 27%, 81%
XYZ	43.9598, 41.1968, 34.9130
YIQ	173.9020, 29.7550, 5.9070

Conversions

Conversions Part 2

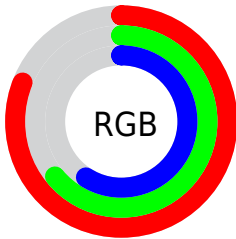
Format	Color
R _Y B	206, 165, 151
Decimal	13542039
CIE Lab	70.31, 14.63, 11.93
CIE LCh	70, 18.876, 39.186
Yxy	41.1968, 0.3661, 0.3431
Android (android.graphics.Color)	4291732119 (0xFFCEA297)
YUV	173.9020, -11.2907, 28.1499
Hunter-Lab	64.1847, 9.9305, 12.6788

Details

The XYZ color **43.9598, 41.1968, 34.9130** is a light color, and the websafe version is hex **CC9999**. A complement of this color would be **43.4176, 50.0642, 65.7677**, and the grayscale version is **40.2281, 42.3231, 46.0899**.

A 20% lighter version of the original color is **77.0723, 75.2935, 68.2286**, and **20.6387, 18.6513, 14.5689** is the 20% darker color. If you saturate the color by 10%, you get **39.7160, 35.1565, 25.9532**, and if you desaturate by 10%, it is **48.8786, 48.1187, 45.5409**.

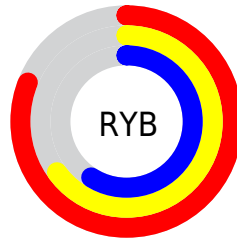
Distribution



Red (81%)

Green (64%)

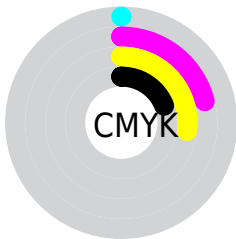
Blue (59%)



Red (81%)

Yellow (65%)

Blue (59%)

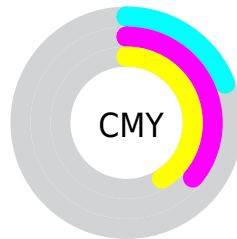


Cyan (0%)

Magenta (21%)

Yellow (27%)

Black (19%)



Cyan (19%)


Magenta (36%)


Yellow (41%)

Brightness & Saturation Gradients


These gradients show how the XYZ color 43.9598, 41.1968, 34.9130 changes by changing the brightness by 10 percent. The first figure shows a shift by +10% for each color and the second figure -10%.


Similar to the brightness gradients but the following saturation gradients show a change of the XYZ color 43.9598, 41.1968, 34.9130 by changing the saturation by 10% instead.

 43.9598, 41.1968,
34.9130

 43.9598, 41.1968,
34.9130


353.3992,
351.1425, 339.0767

 30.8367, 28.4729,
23.3128


 80.4040, 76.9826,
68.5010

 20.6257, 18.6824,
14.6172


 104.4557,
100.8132, 91.3260

 12.9616, 11.4410,
8.4076


132.8811,
129.1149, 118.7296

 7.4789, 6.3643,
4.2653

166.0454,
162.2719, 151.1304

 3.8124, 3.0678,
1.7720

204.3140,
200.6689, 188.9470

 1.5965, 1.1673,
0.4094

248.0523,

 0.3902, 0.0347,

244.6900, 232.5979

0.0000

297.6255,
294.7197, 282.5016

■ 0.0000, 0.0000,
0.0000

■ 43.9598, 41.1968,
34.9130

■ 43.9598, 41.1968,
34.9130

■ 39.7160, 35.1565,
25.9532

■ 48.8786, 48.1187,
45.5409

■ 36.1139, 29.9565,
18.5739

■ 54.4970, 55.9498,
57.9133

■ 33.1225, 25.5609,
12.6836

■ 60.8426, 64.7236,
72.1048

■ 30.7067, 21.9290,
8.1798

■ 67.9402, 74.4703,
88.1851

■ 28.8276, 19.0160,
4.9475

■ 75.8137, 85.2186,
106.2201

■ 27.4411, 16.7727,
2.8526

■ 79.2637, 91.8618,
108.1612

■ 26.4937, 15.1424,
1.7217

■ 26.2541, 14.7226,
1.4580

Harmonies

Analogous

The Analogous color harmony consists of three colors that are next to each other on the color wheel.



45.3393, 41.1968, 42.1863



43.9598, 41.1968, 34.9130



41.3125, 41.1968, 30.7186

Triad

The Triadic color harmony groups three colors that are evenly spaced from another and form a triangle on the color wheel.



43.9598, 41.1968, 34.9130



33.8455, 41.1968, 39.0605



40.1155, 41.1968, 63.9036

Complementary

The Complementary color scheme is a pair of colors which are on the opposite of each other on the color wheel.



43.9598, 41.1968, 34.9130



43.4176, 50.0642, 65.7677

Split Complementary

Split-complementary colors differ from the complementary color scheme. The scheme consists of three colors, the original color and two neighbors of the complement color.



37.0765, 41.1968, 62.7772



43.9598, 41.1968, 34.9130



33.5627, 41.1968, 47.6367

Square

The Square scheme is like the rectangle color scheme, but the four colors are evenly spaced on the color wheel.



43.9598, 41.1968, 34.9130



35.5101, 41.1968, 32.8846



34.7162, 41.1968, 56.5282



43.0440, 41.1968, 59.4293

Rectangle

The Rectangle color scheme consists of four colors that form a rectangle on the color wheel.



43.9598, 41.1968, 34.9130



39.2411, 41.1968, 29.8626



34.7162, 41.1968, 56.5282



39.0717, 41.1968, 64.1790

Sweetspot

The Sweet Spot groups the original color and five complimentary colors.



43.9609, 41.1987, 34.9138



86.9510, 88.7817, 90.8484



46.3708, 39.1956, 56.7515



18.3036, 18.5754, 18.7650



0.0000, 0.0000, 0.0000



20.3446, 21.4041, 23.3091

Same Dimension

The Same Dimension uses a secret algorithm to generate beautiful new colors.



43.9609, 41.1987, 34.9138



67.1758, 61.0010, 47.9722



49.3451, 51.9671, 36.7086



11.3911, 11.5711, 11.7125



16.2219, 9.1767, 0.9163



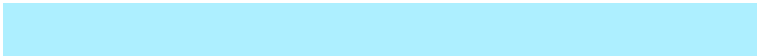
0.8916, 0.5830, 0.0655

Inverse Universe

The Inverse Universe completely reimagines the original color for something new.



43.4176, 50.0642, 65.7677



66.1433, 77.6922, 106.1177



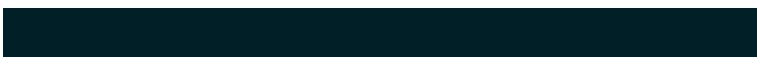
37.8140, 38.8570, 63.8998



11.3452, 12.3309, 14.3525



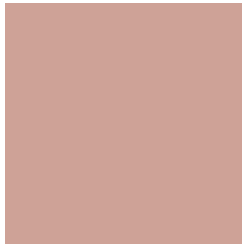
15.1912, 19.4064, 38.9014



0.8334, 1.1006, 2.0235

Previews

White Background



This preview shows how the XYZ color 43.9598, 41.1968, 34.9130 looks on a white background.

Color Contrast Check

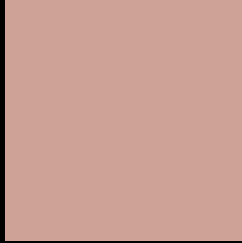
Large Text (above 18pt) WCAG AA × Fail

Any Text WCAG AA × Fail

Large Text (above 18pt) WCAG AAA × Fail

Any Text WCAG AAA × Fail

Black Background



This preview shows how the XYZ color 43.9598, 41.1968, 34.9130 looks on a black background.

Color Contrast Check

Large Text (above 18pt) WCAG AA ✓ Pass

Any Text WCAG AA ✓ Pass

Large Text (above 18pt) WCAG AAA ✓ Pass

Any Text WCAG AAA ✓ Pass

If you want to check with other color combinations, try the [Color Contrast Checker](#).

XYZ 43.9598, 41.1968, 34.9130

Background



This preview shows how black text looks on a background with the XYZ color 43.9598, 41.1968, 34.9130.



This preview shows how white text looks on a background with the XYZ color 43.9598, 41.1968,

34.9130.

Color Blindness Simulation

Color vision deficiency is a very complex topic, and I could not describe the different causes any better than Wikipedia does, so if you want to learn more, you should check out their [article about color blindness](#).

Dichromacy



Original Color

43.9598, 41.1968, 34.9130

Protanopia

39.3437, 41.4891, 37.3870

Deuteranopia

42.1672, 41.3448, 34.6120



Tritanopia

45.7612, 41.1464, 44.0583

Trichromacy



Original Color

43.9598, 41.1968, 34.9130

Protanomaly

40.8216, 41.1572, 36.3644

Deuteranomaly

42.7796, 41.3916, 34.5888

Tritanomaly

45.0038, 41.0873, 40.6807

Monochromacy



Original Color

43.9598, 41.1968, 34.9130

Achromatopsia

40.2316, 42.3268, 46.0938

Achromatomaly

41.5074, 41.9417, 41.9843

CSS Examples

Text

The CSS property to change the color of the text to XYZ 43.9598, 41.1968, 34.9130 is called "color". The color property can be set on classes, ids or directly on the HTML element.

This example shows how text in the color `rgb(206, 162, 151)` looks like.

```
.text, #text, p{  
    color:rgb(206, 162, 151)  
}
```

If you want to add a text shadow in that color use the text-shadow property, you can generate a text shadow directly with our [CSS Text Shadow Generator](#).

Here you see how black text with a 4 pixel rgb(206, 162, 151) colored shadow looks like.

```
.shadow{ text-shadow: 4px 4px 2px rgb(206, 162, 151) }
```

Border

The CSS property to change the border of an element to XYZ 43.9598, 41.1968, 34.9130 is called "border". The border property can be set on classes, ids or directly on the HTML element.

This example shows the color as border, it can be applied via the CSS property "border" or "border-color".

```
.border, #border, table{ border:4px solid rgb(206, 162, 151) }
```


If only the border color should be changed use the property `border-color`.

```
.border{ border-color:rgb(206, 162, 151) }
```

If you want to add a box shadow in that color use:

Here you see how a box with a 4 pixel `rgb(206, 162, 151)` colored shadow looks like.

```
.boxshadow{ -moz-box-shadow:4px 4px 4px  
4px rgb(206, 162, 151); -webkit-box-  
shadow:4px 4px 4px 4px rgb(206, 162, 151);  
box-shadow:4px 4px 4px 4px rgb(206, 162,  
151) }
```

Background

The CSS property to change the background color of an element to XYZ 43.9598, 41.1968, 34.9130 is called "background". The background property can be set on classes, ids or directly on the HTML element.

```
.background, #background, body{  
background: rgb(206, 162, 151) }
```

If only the background color should be changed can be used:

```
.background{ background-color: rgb(206,  
162, 151) }
```

This example shows the color as background, it is applied via the CSS property "background".

To optimize and compress your CSS code, you can use our [online CSS compressor and optimizer](#) based on csstidy. If you want to create a linear or radial gradient as background or border, check our [CSS Gradient Generator](#).

Hey! You found this booklet interesting? Support Converting Colors with the new Membership Option!

The pro membership hides all ads, plus gives you double the colors in the color bucket, and more awesome pro features!

[Learn more, Memberships starting at \\$2.50/m!](#)

**Follow me
on Twitter!**

@ConvertingColor