

Converting Colors

XYZ(44.0234, 41.7568, 25.8088)

Have a look what the booklet for
XYZ(44.0234, 41.7568, 25.8088)
contains.

XYZ(44.0793, 41.7237, 25.8089)	3
<i>Conversions</i>	4
<i>Details</i>	6
<i>Harmonies</i>	12
<i>Previews</i>	24
<i>Color Blindness Simulation</i>	28
<i>CSS Examples</i>	31

Color

**XYZ(44.0793, 41.7237,
25.8089)**

Conversions

Conversions Part 1

Format	Color
Hex	D4A37F
RGB	212, 163, 127
RGB Percent	83%, 64%, 50%
CMY	0.1686, 0.3608, 0.5020
CMYK	0.00, 0.23, 0.40, 0.17
HSL	25°, 50%, 66%
HSV	25°, 40%, 83%
XYZ	44.0793, 41.7237, 25.8089
YIQ	173.5470, 40.7600, -0.8080

Conversions

Conversions Part 2

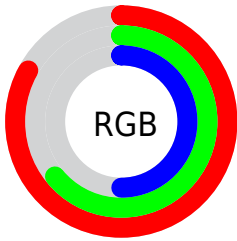
Format	Color
RYB	212, 189, 127
Decimal	13935487
CIELab	70.68, 13.40, 25.67
CIElCh	71, 28.960, 62.436
Yxy	41.7237, 0.3949, 0.3738
Android (android.graphics.Color)	4292125567 (0xFFD4A37F)
YUV	173.5470, -22.9477, 33.7233
Hunter-Lab	64.5939, 8.7703, 21.5260

Details

The XYZ color **44.0793, 41.7237, 25.8089** is a light color, and the websafe version is hex **CC9966**. A complement of this color would be **36.1608, 40.3146, 68.1629**, and the grayscale version is **40.0999, 42.1882, 45.9430**.

A 20% lighter version of the original color is **74.5496, 74.6981, 53.6690**, and **20.7699, 18.9869, 9.7779** is the 20% darker color. If you saturate the color by 10%, you get **40.7746, 37.0977, 18.5931**, and if you desaturate by 10%, it is **47.8865, 46.8893, 34.6273**.

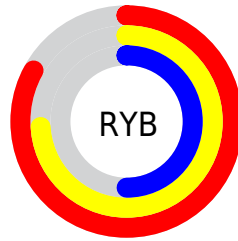
Distribution



Red (83%)

Green (64%)

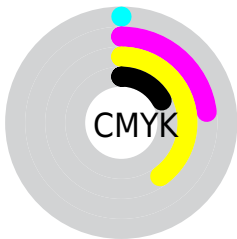
Blue (50%)



Red (83%)

Yellow (74%)

Blue (50%)

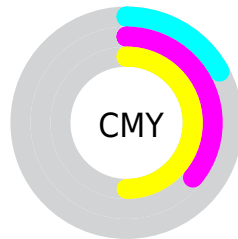


Cyan (0%)

Magenta (23%)

Yellow (40%)

Black (17%)



Cyan (17%)

Magenta (36%)

Yellow (50%)

Brightness & Saturation Gradients

These gradients show how the XYZ color 44.0793, 41.7237, 25.8089 changes by changing the brightness by 10 percent. The first figure shows a shift by +10% for each color and the second figure -10%.

Similar to the brightness gradients but the following saturation gradients show a change of the XYZ color 44.0793, 41.7237, 25.8089 by changing the saturation by 10% instead.

■ 44.0793, 41.7237,
25.8089

■ 44.0793, 41.7237,
25.8089

353.8785,
353.3363, 295.4183

■ 30.9310, 28.8850,
16.4562

■ 80.5827, 77.7813,
53.9468

■ 20.6979, 18.9938,
9.6897

■ 104.6685,
101.7690, 73.5691

■ 13.0146, 11.6658,
5.0908

■ 133.1308,
130.2418, 97.4517

■ 7.5156, 6.5166,
2.2410

166.3351,
163.5841, 126.0132

■ 3.8358, 3.1617,
0.6979

204.6467,
202.1803, 159.6720

■ 1.6097, 1.2167,
0.0000

248.4309,

■ 0.3987, 0.0753,

246.4148, 198.8468

0.0000

298.0530,
296.6720, 243.9560

■ 0.0000, 0.0000,
0.0000

■ 44.0793, 41.7237,
25.8089

■ 44.0793, 41.7237,
25.8089

■ 40.7746, 37.0977,
18.5931

■ 47.8865, 46.8893,
34.6273

■ 37.9451, 32.9862,
12.8786

■ 52.2155, 52.6066,
45.1360

■ 35.5649, 29.3706,
8.5563


■ 57.0884, 58.8948,
57.4195


■ 33.6043, 26.2286,
5.5009

■ 62.5248, 65.7702,
71.5556


■ 32.0288, 23.5353,
3.5642

■ 68.5435, 73.2483,
87.6175

 30.7906, 21.2756,
2.4838

 75.1623, 81.3442,
105.6746

 78.9367, 88.6877,
107.5658

 80.9613, 92.7370,
108.2407

Harmonies

Analogous

The Analogous color harmony consists of three colors that are next to each other on the color wheel.



47.9605, 41.7237, 32.6858



44.0793, 41.7237, 25.8089



39.2665, 41.7237, 23.8223

Triad

The Triadic color harmony groups three colors that are evenly spaced from another and form a triangle on the color wheel.



44.0793, 41.7237, 25.8089



31.1388, 41.7237, 46.5618



44.8118, 41.7237, 71.5646

Complementary

The Complementary color scheme is a pair of colors which are on the opposite of each other on the color wheel.



44.0793, 41.7237, 25.8089



36.1608, 40.3146, 68.1629

Split Complementary

Split-complementary colors differ from the complementary color scheme. The scheme consists of three colors, the original color and two neighbors of the complement color.



40.0504, 41.7237, 77.2550



44.0793, 41.7237, 25.8089



32.3721, 41.7237, 61.1188

Square

The Square scheme is like the rectangle color scheme, but the four colors are evenly spaced on the color wheel.



44.0793, 41.7237, 25.8089



32.0309, 41.7237, 34.2720



35.5411, 41.7237, 73.0952



48.4068, 41.7237, 58.7798

Rectangle

The Rectangle color scheme consists of four colors that form a rectangle on the color wheel.



44.0793, 41.7237, 25.8089



36.2407, 41.7237, 25.1299



35.5411, 41.7237, 73.0952



43.2818, 41.7237, 74.4749

Sweetspot

The Sweet Spot groups the original color and five complimentary colors.



44.0804, 41.7257, 25.8097



85.1379, 87.4416, 83.1964



42.6353, 32.3339, 45.3718



18.0084, 18.4405, 17.2624



0.0000, 0.0000, 0.0000



20.3446, 21.4041, 23.3091

Same Dimension

The Same Dimension uses a secret algorithm to generate beautiful new colors.



44.0804, 41.7257, 25.8097



62.6795, 57.4093, 29.8232



52.7936, 59.1522, 28.7141



12.8513, 13.2768, 13.0461



19.1032, 13.3237, 1.5649



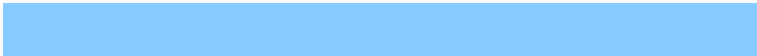
1.2332, 0.9656, 0.1214

Inverse Universe

The Inverse Universe completely reimagines the original color for something new.



36.1608, 40.3146, 68.1629



49.0520, 54.9584, 102.6305



29.1731, 26.3392, 65.8337



12.3311, 13.1855, 15.8327



11.7492, 11.7601, 40.1038



0.7899, 0.8717, 2.4459

Previews

White Background



This preview shows how the XYZ color 44.0793, 41.7237, 25.8089 looks on a white background.

Color Contrast Check

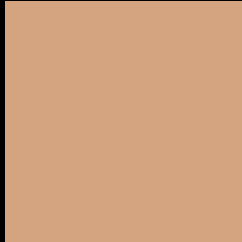
Large Text (above 18pt) WCAG AA × Fail

Any Text WCAG AA × Fail

Large Text (above 18pt) WCAG AAA × Fail

Any Text WCAG AAA × Fail

Black Background



This preview shows how the XYZ color 44.0793, 41.7237, 25.8089 looks on a black background.

Color Contrast Check

Large Text (above 18pt) WCAG AA ✓ Pass

Any Text WCAG AA ✓ Pass

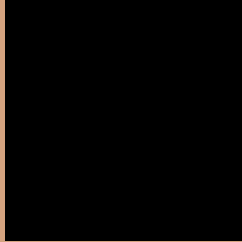
Large Text (above 18pt) WCAG AAA ✓ Pass

Any Text WCAG AAA ✓ Pass

If you want to check with other color combinations, try the [Color Contrast Checker](#).

XYZ 44.0793, 41.7237, 25.8089

Background



This preview shows how black text looks on a background with the XYZ color 44.0793, 41.7237, 25.8089.



This preview shows how white text looks on a background with the XYZ color 44.0793, 41.7237,

25.8089.

Color Blindness Simulation

Color vision deficiency is a very complex topic, and I could not describe the different causes any better than Wikipedia does, so if you want to learn more, you should check out their [article about color blindness](#).

Dichromacy



Original Color

44.0793, 41.7237, 25.8089

Protanopia

39.0479, 41.8401, 27.4906

Deuteranopia

42.5790, 41.7579, 25.5546



Tritanopia

47.5373, 41.5774, 43.0559

Trichromacy



Original Color

44.0793, 41.7237, 25.8089

Protanomaly

40.7229, 41.5897, 27.0004

Deuteranomaly

43.2335, 41.8265, 25.5333

Tritanomaly

46.2552, 41.5764, 36.1590

Monochromacy



Original Color

44.0793, 41.7237, 25.8089

Achromatopsia

40.2316, 42.3268, 46.0938

Achromatomaly

41.1996, 41.8751, 37.8095

CSS Examples

Text

The CSS property to change the color of the text to XYZ 44.0793, 41.7237, 25.8089 is called "color". The color property can be set on classes, ids or directly on the HTML element.

This example shows how text in the color rgb(212, 163, 127) looks like.

```
.text, #text, p{  
    color:rgb(212, 163, 127)  
}
```

If you want to add a text shadow in that color use the text-shadow property, you can generate a text shadow directly with our [CSS Text Shadow Generator](#).

Here you see how black text with a 4 pixel rgb(212, 163, 127) colored shadow looks like.

```
.shadow{ text-shadow: 4px 4px 2px rgb(212, 163, 127) }
```

Border

The CSS property to change the border of an element to XYZ 44.0793, 41.7237, 25.8089 is called "border". The border property can be set on classes, ids or directly on the HTML element.

This example shows the color as border, it can be applied via the CSS property "border" or "border-color".

```
.border, #border, table{ border:4px solid rgb(212, 163, 127) }
```


If only the border color should be changed use the property border-color.

```
.border{ border-color:rgb(212, 163, 127) }
```

If you want to add a box shadow in that color use:

Here you see how a box with a 4 pixel rgb(212, 163, 127) colored shadow looks like.

```
.boxshadow{ -moz-box-shadow:4px 4px 4px  
4px rgb(212, 163, 127); -webkit-box-  
shadow:4px 4px 4px 4px rgb(212, 163, 127);  
box-shadow:4px 4px 4px 4px rgb(212, 163,  
127) }
```

Background

The CSS property to change the background color of an element to XYZ 44.0793, 41.7237, 25.8089 is called "background". The background property can be set on classes, ids or directly on the HTML element.

```
.background, #background, body{  
background: rgb(212, 163, 127) }
```

If only the background color should be changed can be used:

```
.background{ background-color: rgb(212,  
163, 127) }
```

This example shows the color as background, it is applied via the CSS property "background".

To optimize and compress your CSS code, you can use our [online CSS compressor and optimizer](#) based on csstidy. If you want to create a linear or radial gradient as background or border, check our [CSS Gradient Generator](#).

Hey! You found this booklet interesting? Support Converting Colors with the new Membership Option!

The pro membership hides all ads, plus gives you double the colors in the color bucket, and more awesome pro features!

[Learn more, Memberships starting at \\$2.50/m!](#)

**Follow me
on Twitter!**

@ConvertingColor