

Converting Colors

XYZ(44.0330, 42.2895, 40.0076)

Have a look what the booklet for
XYZ(44.0330, 42.2895, 40.0076)
contains.

XYZ(43.9772, 42.1604, 40.0023)	3
<i>Conversions</i>	4
<i>Details</i>	6
<i>Harmonies</i>	12
<i>Previews</i>	24
<i>Color Blindness Simulation</i>	28
<i>CSS Examples</i>	31

Color

**XYZ(43.9772, 42.1604,
40.0023)**

Conversions

Conversions Part 1

Format	Color
Hex	C8A6A2
RGB	200, 166, 162
RGB Percent	78%, 65%, 64%
CMY	0.2157, 0.3490, 0.3647
CMYK	0.00, 0.17, 0.19, 0.22
HSL	6°, 26%, 71%
HSV	6°, 19%, 78%
XYZ	43.9772, 42.1604, 40.0023
YIQ	175.7100, 21.5480, 5.9640

Conversions

Conversions Part 2

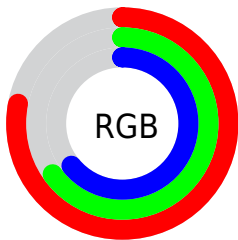
Format	Color
R _Y B	200, 166, 162
Decimal	13149858
CIE Lab	70.98, 11.80, 6.73
CIE LCh	71, 13.585, 29.675
Yxy	42.1604, 0.3486, 0.3342
Android (android.graphics.Color)	4291339938 (0xFFC8A6A2)
YUV	175.7100, -6.7590, 21.3023
Hunter-Lab	64.9310, 7.2671, 8.9247

Details

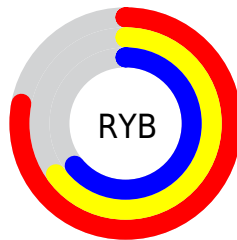
The XYZ color **43.9772, 42.1604, 40.0023** is a light color, and the websafe version is hex **CC9999**. A complement of this color would be **45.0651, 51.3301, 62.1764**, and the grayscale version is **41.1430, 43.2856, 47.1380**.

A 20% lighter version of the original color is **79.6208, 77.9827, 76.5013**, and **20.6858, 19.2714, 17.3813** is the 20% darker color. If you saturate the color by 10%, you get **39.3096, 35.4474, 30.3618**, and if you desaturate by 10%, it is **49.3824, 49.8954, 51.2846**.

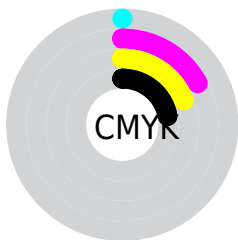
Distribution



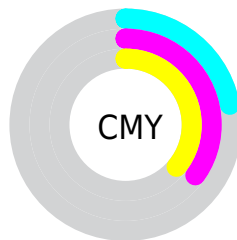
- Red (78%)
- Green (65%)
- Blue (64%)



- Red (78%)
- Yellow (65%)
- Blue (64%)



- Cyan (0%)
- Magenta (17%)
- Yellow (19%)
- Black (22%)



- Cyan (22%)
- Magenta (35%)
- Yellow (36%)

Brightness & Saturation Gradients


These gradients show how the XYZ color 43.9772, 42.1604, 40.0023 changes by changing the brightness by 10 percent. The first figure shows a shift by +10% for each color and the second figure -10%.


Similar to the brightness gradients but the following saturation gradients show a change of the XYZ color 43.9772, 42.1604, 40.0023 by changing the saturation by 10% instead.


 43.9772, 42.1604,
40.0023


 43.9772, 42.1604,
40.0023


353.4690,
355.1474, 361.6856

 30.8504, 29.2269,
27.2265


 80.4300, 78.4423,
76.4041

 20.6362, 19.2525,
17.5095


 104.4867,
102.5596, 100.8673

 12.9693, 11.8529,
10.4326


132.9175,
131.1735, 130.0633

 7.4843, 6.6436,
5.5774

166.0876,
164.6685, 164.4108

 3.8158, 3.2402,
2.5253

204.3625,
203.4290, 204.3282

 1.5984, 1.2584,
0.8535

248.1074,

 0.3914, 0.1086,

247.8394, 250.2341

0.0000

297.6878,
298.2841, 302.5471

0.0000, 0.0000,
0.0000

43.9772, 42.1604,
40.0023

43.9772, 42.1604,
40.0023

39.3096, 35.4474,
30.3618

49.3824, 49.8954,
51.2846

35.3443, 29.7083,
22.2841

55.5518, 58.6866,
64.2776

32.0481, 24.8993,
15.6875

62.5147, 68.5737,
79.0493

29.3840, 20.9714,
10.4820

70.2980, 79.5928,
95.6633

27.3110, 17.8710,
6.5675

77.6296, 91.0194,
108.0847

■ 25.7834, 15.5385,
3.8309

■ 24.7489, 13.9064,
2.1389

■ 24.1342, 12.8912,
1.2737

■ 24.0891, 12.8184,
1.2046

Harmonies

Analogous

The Analogous color harmony consists of three colors that are next to each other on the color wheel.



44.5877, 42.1604, 45.9764



43.9772, 42.1604, 40.0023



42.3120, 42.1604, 35.9575

Triad

The Triadic color harmony groups three colors that are evenly spaced from another and form a triangle on the color wheel.



43.9772, 42.1604, 40.0023



36.4287, 42.1604, 39.8905



40.0475, 42.1604, 59.5443

Complementary

The Complementary color scheme is a pair of colors which are on the opposite of each other on the color wheel.



43.9772, 42.1604, 40.0023



45.0651, 51.3301, 62.1764

Split Complementary

Split-complementary colors differ from the complementary color scheme. The scheme consists of three colors, the original color and two neighbors of the complement color.



37.9129, 42.1604, 57.5374



43.9772, 42.1604, 40.0023



35.8723, 42.1604, 45.8347

Square

The Square scheme is like the rectangle color scheme, but the four colors are evenly spaced on the color wheel.



43.9772, 42.1604, 40.0023



37.9542, 42.1604, 35.8974



36.4055, 42.1604, 52.3627



42.2676, 42.1604, 57.6198

Rectangle

The Rectangle color scheme consists of four colors that form a rectangle on the color wheel.



43.9772, 42.1604, 40.0023



40.8580, 42.1604, 34.6938



36.4055, 42.1604, 52.3627



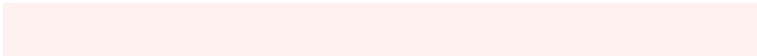
39.2965, 42.1604, 59.3046

Sweetspot

The Sweet Spot groups the original color and five complimentary colors.



43.9784, 42.1623, 40.0032



88.4714, 90.6289, 95.0348



46.7268, 42.1152, 58.0106



18.7897, 19.1889, 20.0327



0.0000, 0.0000, 0.0000



20.3446, 21.4041, 23.3091

Same Dimension

The Same Dimension uses a secret algorithm to generate beautiful new colors.



43.9784, 42.1623, 40.0032



72.4887, 67.7515, 61.6904



47.6486, 49.5027, 41.2266



10.7223, 10.8138, 11.0849



15.3487, 8.2146, 0.7766



0.7580, 0.4513, 0.0472

Inverse Universe

The Inverse Universe completely reimagines the original color for something new.



45.0651, 51.3301, 62.1764



74.7263, 86.6432, 107.3931



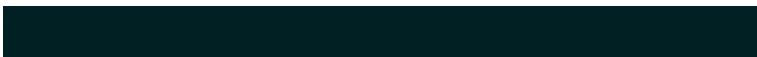
41.0878, 43.3754, 60.8506



10.8476, 11.8692, 13.6368



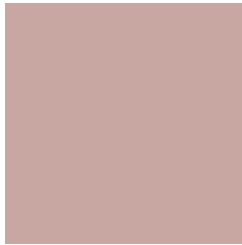
16.9084, 23.2108, 38.3333



0.8287, 1.1553, 1.8245

Previews

White Background



This preview shows how the XYZ color 43.9772, 42.1604, 40.0023 looks on a white background.

Color Contrast Check

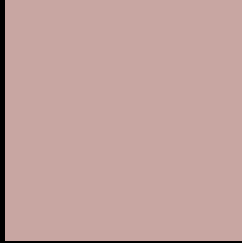
Large Text (above 18pt) WCAG AA × Fail

Any Text WCAG AA × Fail

Large Text (above 18pt) WCAG AAA × Fail

Any Text WCAG AAA × Fail

Black Background



This preview shows how the XYZ color 43.9772, 42.1604, 40.0023 looks on a black background.

Color Contrast Check

Large Text (above 18pt) WCAG AA ✓ Pass

Any Text WCAG AA ✓ Pass

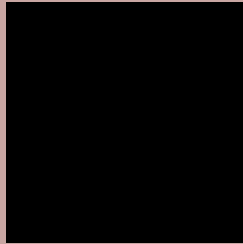
Large Text (above 18pt) WCAG AAA ✓ Pass

Any Text WCAG AAA ✓ Pass

If you want to check with other color combinations, try the [Color Contrast Checker](#).

XYZ 43.9772, 42.1604, 40.0023

Background



This preview shows how black text looks on a background with the XYZ color 43.9772, 42.1604, 40.0023.



This preview shows how white text looks on a background with the XYZ color 43.9772, 42.1604,

Color Blindness Simulation

Color vision deficiency is a very complex topic, and I could not describe the different causes any better than Wikipedia does, so if you want to learn more, you should check out their [article about color blindness](#).

Dichromacy



Original Color

43.9772, 42.1604, 40.0023

Protanopia

40.4169, 42.2240, 42.0962

Deuteranopia

43.0299, 42.2160, 40.0630



Tritanopia

45.5684, 42.2818, 47.3545

Trichromacy



Original Color

43.9772, 42.1604, 40.0023

Protanomaly

41.6598, 42.0309, 41.5144

Deuteranomaly

43.3663, 42.1164, 40.0260

Tritanomaly

44.9889, 42.3063, 44.8245

Monochromacy



Original Color

43.9772, 42.1604, 40.0023

Achromatopsia

41.2663, 43.4154, 47.2793

Achromatomaly

42.1108, 42.7596, 44.5620

CSS Examples

Text

The CSS property to change the color of the text to XYZ 43.9772, 42.1604, 40.0023 is called "color". The color property can be set on classes, ids or directly on the HTML element.

This example shows how text in the color `rgb(200, 166, 162)` looks like.

```
.text, #text, p{  
    color:rgb(200, 166, 162)  
}
```

If you want to add a text shadow in that color use the text-shadow property, you can generate a text shadow directly with our [CSS Text Shadow Generator](#).

Here you see how black text with a 4 pixel rgb(200, 166, 162) colored shadow looks like.

```
.shadow{ text-shadow: 4px 4px 2px rgb(200, 166, 162) }
```

Border

The CSS property to change the border of an element to XYZ 43.9772, 42.1604, 40.0023 is called "border". The border property can be set on classes, ids or directly on the HTML element.

This example shows the color as border, it can be applied via the CSS property "border" or "border-color".

```
.border, #border, table{ border:4px solid rgb(200, 166, 162) }
```


If only the border color should be changed use the property `border-color`.

```
.border{ border-color:rgb(200, 166, 162) }
```

If you want to add a box shadow in that color use:

Here you see how a box with a 4 pixel `rgb(200, 166, 162)` colored shadow looks like.

```
.boxshadow{ -moz-box-shadow:4px 4px 4px  
4px rgb(200, 166, 162); -webkit-box-  
shadow:4px 4px 4px 4px rgb(200, 166, 162);  
box-shadow:4px 4px 4px 4px rgb(200, 166,  
162) }
```

Background

The CSS property to change the background color of an element to XYZ 43.9772, 42.1604, 40.0023 is called "background". The background property can be set on classes, ids or directly on the HTML element.

```
.background, #background, body{  
background: rgb(200, 166, 162) }
```

If only the background color should be changed can be used:

```
.background{ background-color: rgb(200,  
166, 162) }
```

This example shows the color as background, it is applied via the CSS property "background".

To optimize and compress your CSS code, you can use our [online CSS compressor and optimizer](#) based on csstidy. If you want to create a linear or radial gradient as background or border, check our [CSS Gradient Generator](#).

Hey! You found this booklet interesting? Support Converting Colors with the new Membership Option!

The pro membership hides all ads, plus gives you double the colors in the color bucket, and more awesome pro features!

[Learn more, Memberships starting at \\$2.50/m!](#)

**Follow me
on Twitter!**

@ConvertingColor