

# Converting Colors

XYZ(44.0477, 37.1908, 36.4722)

Have a look what the booklet for  
XYZ(44.0477, 37.1908, 36.4722)  
contains.

<b>XYZ(44.0112, 37.2542, 36.3236)</b> .....	3
<b><i>Conversions</i></b> .....	4
<b><i>Details</i></b> .....	6
<b><i>Harmonies</i></b> .....	12
<b><i>Previews</i></b> .....	24
<b><i>Color Blindness Simulation</i></b> .....	28
<b><i>CSS Examples</i></b> .....	31

# Color

**XYZ(44.0112, 37.2542,  
36.3236)**

# Conversions

## Conversions Part 1

Format	Color
Hex	D6929C
RGB	214, 146, 156
RGB Percent	84%, 57%, 61%
CMY	0.1608, 0.4274, 0.3882
CMYK	0.00, 0.32, 0.27, 0.16
HSL	351°, 45%, 71%
HSV	351°, 32%, 84%
XYZ	44.0112, 37.2542, 36.3236
YIQ	167.4720, 37.3180, 17.5260

# Conversions

## Conversions Part 2

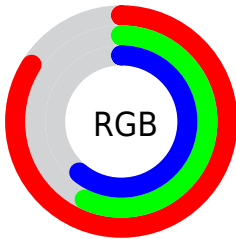
Format	Color
R <sub>Y</sub> B	214, 146, 156
Decimal	14062236
CIE Lab	67.47, 27.05, 5.20
CIE LCh	67, 27.545, 10.881
Yxy	37.2542, 0.3743, 0.3168
Android (android.graphics.Color)	4292252316 (0xFFD6929C)
YUV	167.4720, -5.6557, 40.8051
Hunter-Lab	61.0362, 21.8971, 7.4410

# Details

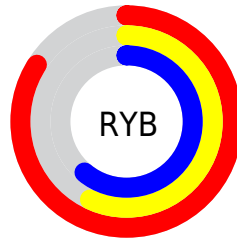
The XYZ color **44.0112, 37.2542, 36.3236** is a light color, and the websafe version is hex **CC9999**. A complement of this color would be **46.8013, 58.5647, 65.9672**, and the grayscale version is **36.9757, 38.9013, 42.3636**.

A 20% lighter version of the original color is **73.5271, 67.2217, 70.0726**, and **20.7426, 16.4734, 15.4510** is the 20% darker color. If you saturate the color by 10%, you get **39.5846, 30.6914, 27.7865**, and if you desaturate by 10%, it is **49.2897, 45.1484, 46.2916**.

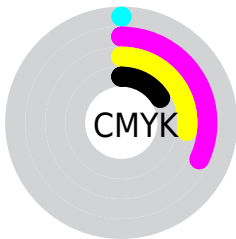
# Distribution



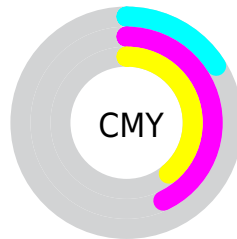
- Red (84%)
- Green (57%)
- Blue (61%)



- Red (84%)
- Yellow (57%)
- Blue (61%)



- Cyan (0%)
- Magenta (32%)
- Yellow (27%)
- Black (16%)



- Cyan (16%)
- Magenta (43%)
- Yellow (39%)

# Brightness & Saturation Gradients

These gradients show how the XYZ color 44.0112, 37.2542, 36.3236 changes by changing the brightness by 10 percent. The first figure shows a shift by +10% for each color and the second figure -10%.

Similar to the brightness gradients but the following saturation gradients show a change of the XYZ color 44.0112, 37.2542, 36.3236 by changing the saturation by 10% instead.



■ 44.0112, 37.2542,  
36.3236

■ 44.0112, 37.2542,  
36.3236

353.6054,  
334.4098, 345.4528

■ 30.8773, 25.4044,  
24.3926

■ 80.4808, 70.9636,  
70.7059

■ 20.6568, 16.3786,  
15.4102

■ 104.5472, 93.5919,  
93.9942

■ 12.9844, 9.7924,  
8.9580

132.9885,  
120.5819, 121.9054

■ 7.4947, 5.2616,  
4.6173

166.1700,  
152.3178, 154.8580

■ 3.8224, 2.4015,  
1.9698

204.4571,  
189.1842, 193.2704

■ 1.6022, 0.8267,  
0.5366

248.2151,

■ 0.3938, 0.0000,

231.5654, 237.5614

0.0000

297.8095,  
279.8458, 288.1493

0.0000, 0.0000,  
0.0000

44.0112, 37.2542,  
36.3236

44.0112, 37.2542,  
36.3236

39.5846, 30.6914,  
27.7865

49.2897, 45.1484,  
46.2916

35.9618, 25.3814,  
20.6120

55.4584, 54.4361,  
57.7498

33.0950, 21.2457,  
14.7298

62.5573, 65.1822,  
70.7569

30.9296, 18.1948,  
10.0623

70.6227, 77.4457,  
85.3679

29.4037, 16.1261,  
6.5231

79.6892, 91.2825,  
101.6348

■ 28.4442, 14.9172,  
4.0144

■ 81.5417, 93.0362,  
108.2678

■ 27.9851, 14.3976,  
2.6323

# Harmonies

## Analogous

The Analogous color harmony consists of three colors that are next to each other on the color wheel.



43.6626, 37.2542, 48.6806



44.0112, 37.2542, 36.3236



41.9208, 37.2542, 27.1490

# Triad

The Triadic color harmony groups three colors that are evenly spaced from another and form a triangle on the color wheel.



44.0112, 37.2542, 36.3236



30.3484, 37.2542, 25.3787



32.8115, 37.2542, 66.7905

# Complementary

The Complementary color scheme is a pair of colors which are on the opposite of each other on the color wheel.



44.0112, 37.2542, 36.3236



46.8013, 58.5647, 65.9672

# Split Complementary

Split-complementary colors differ from the complementary color scheme. The scheme consists of three colors, the original color and two neighbors of the complement color.



29.6090, 37.2542, 57.7973



44.0112, 37.2542, 36.3236



28.2672, 37.2542, 33.4029

# Square

The Square scheme is like the rectangle color scheme, but the four colors are evenly spaced on the color wheel.



44.0112, 37.2542, 36.3236



33.8958, 37.2542, 21.7202



28.0078, 37.2542, 45.1211



36.9665, 37.2542, 68.0054



# Rectangle

The Rectangle color scheme consists of four colors that form a rectangle on the color wheel.



44.0112, 37.2542, 36.3236



39.5159, 37.2542, 23.4282



28.0078, 37.2542, 45.1211



31.5970, 37.2542, 64.5037

# Sweetspot

The Sweet Spot groups the original color and five complimentary colors.



44.0122, 37.2560, 36.3243



84.1414, 83.4731, 88.9543



47.2647, 38.2238, 68.5054



17.7062, 17.4082, 18.4809



0.0000, 0.0000, 0.0000



20.3446, 21.4041, 23.3091



# Same Dimension

The Same Dimension uses a secret algorithm to generate beautiful new colors.



44.0122, 37.2560, 36.3243



60.9635, 48.7397, 45.3981



47.2583, 45.0476, 33.4006



12.4969, 12.4503, 13.2910



16.9386, 8.7118, 1.7150



1.0459, 0.5352, 0.2312



# Inverse Universe

The Inverse Universe completely reimagines the original color for something new.



44.0122, 37.2560, 36.3243



60.9635, 48.7397, 45.3981



42.4499, 47.8811, 70.6232



12.4969, 12.4503, 13.2910



16.9386, 8.7118, 1.7150

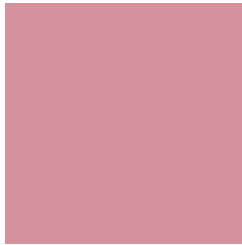


1.0459, 0.5352, 0.2312



# Previews

## White Background



This preview shows how the XYZ color 44.0112, 37.2542, 36.3236 looks on a white background.

## Color Contrast Check

Large Text (above 18pt) WCAG AA × Fail

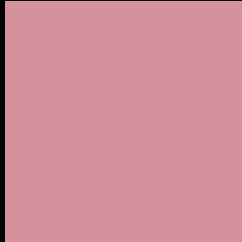
Any Text WCAG AA × Fail

Large Text (above 18pt) WCAG AAA × Fail

Any Text WCAG AAA × Fail



# Black Background



This preview shows how the XYZ color 44.0112, 37.2542, 36.3236 looks on a black background.

## Color Contrast Check

Large Text (above 18pt) WCAG AA ✓ Pass

Any Text WCAG AA ✓ Pass

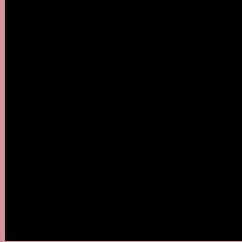
Large Text (above 18pt) WCAG AAA ✓ Pass

Any Text WCAG AAA ✓ Pass

If you want to check with other color combinations, try the [Color Contrast Checker](#).

**XYZ 44.0112, 37.2542, 36.3236**

## **Background**



This preview shows how black text looks on a background with the XYZ color 44.0112, 37.2542, 36.3236.



This preview shows how white text looks on a background with the XYZ color 44.0112, 37.2542,



# Color Blindness Simulation

Color vision deficiency is a very complex topic, and I could not describe the different causes any better than Wikipedia does, so if you want to learn more, you should check out their [article about color blindness](#).

## Dichromacy



### Original Color

44.0112, 37.2542, 36.3236

### Protanopia

36.0947, 37.5196, 41.4160

### Deuteranopia

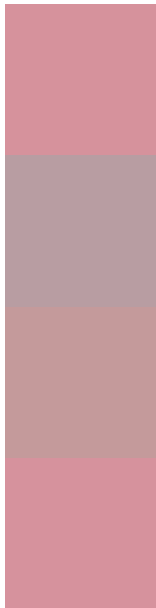
38.2385, 37.4437, 35.7838



## Tritanopia

44.0962, 37.2882, 36.7715

# Trichromacy



## Original Color

44.0112, 37.2542, 36.3236

## Protanomaly

38.3457, 36.9129, 39.2863

## Deuteranomaly

40.2369, 37.2135, 36.0726

## Tritanomaly

44.0962, 37.2882, 36.7715

# Monochromacy



## Original Color

44.0112, 37.2542, 36.3236

## Achromatopsia

36.7301, 38.6429, 42.0822

## Achromatomaly

38.7762, 37.6310, 39.8701

# CSS Examples

## Text

The CSS property to change the color of the text to XYZ 44.0112, 37.2542, 36.3236 is called "color". The color property can be set on classes, ids or directly on the HTML element.

This example shows how text in the color `rgb(214, 146, 156)` looks like.

```
.text, #text, p{  
    color:rgb(214, 146, 156)  
}
```

If you want to add a text shadow in that color use the text-shadow property, you can generate a text shadow directly with our [CSS Text Shadow Generator](#).

Here you see how black text with a 4 pixel rgb(214, 146, 156) colored shadow looks like.

```
.shadow{ text-shadow: 4px 4px 2px rgb(214, 146, 156) }
```

## Border

The CSS property to change the border of an element to XYZ 44.0112, 37.2542, 36.3236 is called "border". The border property can be set on classes, ids or directly on the HTML element.

This example shows the color as border, it can be applied via the CSS property "border" or "border-color".

```
.border, #border, table{ border:4px solid rgb(214, 146, 156) }
```



If only the border color should be changed use the property `border-color`.

```
.border{ border-color:rgb(214, 146, 156) }
```

If you want to add a box shadow in that color use:

Here you see how a box with a 4 pixel `rgb(214, 146, 156)` colored shadow looks like.

```
.boxshadow{ -moz-box-shadow:4px 4px 4px  
4px rgb(214, 146, 156); -webkit-box-  
shadow:4px 4px 4px 4px rgb(214, 146, 156);  
box-shadow:4px 4px 4px 4px rgb(214, 146,  
156) }
```

# Background

The CSS property to change the background color of an element to XYZ 44.0112, 37.2542, 36.3236 is called "background". The background property can be set on classes, ids or directly on the HTML element.

```
.background, #background, body{  
background: rgb(214, 146, 156) }
```

If only the background color should be changed can be used:

```
.background{ background-color: rgb(214,  
146, 156) }
```

This example shows the color as background, it is applied via the CSS property "background".

To optimize and compress your CSS code, you can use our [online CSS compressor and optimizer](#) based on csstidy. If you want to create a linear or radial gradient as background or border, check our [CSS Gradient Generator](#).

Hey! You found this booklet interesting? Support Converting Colors with the new Membership Option!

The pro membership hides all ads, plus gives you double the colors in the color bucket, and more awesome pro features!

**[Learn more, Memberships starting at \\$2.50/m!](#)**

**Follow me  
on Twitter!**

@ConvertingColor