

Converting Colors

XYZ(44.0612, 43.9211, 45.4950)

Have a look what the booklet for
XYZ(44.0612, 43.9211, 45.4950)
contains.

XYZ(44.2246, 44.1107, 45.7185)	3
<i>Conversions</i>	4
<i>Details</i>	6
<i>Harmonies</i>	12
<i>Previews</i>	24
<i>Color Blindness Simulation</i>	28
<i>CSS Examples</i>	31

Color

**XYZ(44.2246, 44.1107,
45.7185)**

Conversions

Conversions Part 1

Format	Color
Hex	C0ADAD
RGB	192, 173, 173
RGB Percent	75%, 68%, 68%
CMY	0.2471, 0.3216, 0.3216
CMYK	0.00, 0.10, 0.10, 0.25
HSL	0°, 13%, 72%
HSV	0°, 10%, 75%
XYZ	44.2246, 44.1107, 45.7185
YIQ	178.6810, 11.3240, 4.0280

Conversions

Conversions Part 2

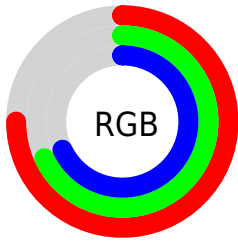
Format	Color
RYB	192, 173, 173
Decimal	12627373
CIELab	72.30, 6.83, 2.48
CIElCh	72, 7.269, 19.961
Yxy	44.1107, 0.3299, 0.3291
Android (android.graphics.Color)	4290817453 (0xFFC0ADAD)
YUV	178.6810, -2.8007, 11.6808
Hunter-Lab	66.4159, 2.6307, 5.6778

Details

The XYZ color **44.2246, 44.1107, 45.7185** is a light color, and the websafe version is hex **999999**. A complement of this color would be **45.5975, 50.3884, 57.1923**, and the grayscale version is **42.6892, 44.9123, 48.9095**.

A 20% lighter version of the original color is **80.4584, 81.0447, 84.8014**, and **20.7698, 20.4585, 20.9434** is the 20% darker color. If you saturate the color by 10%, you get **39.0785, 36.5809, 35.4863**, and if you desaturate by 10%, it is **50.1691, 52.8090, 57.5352**.

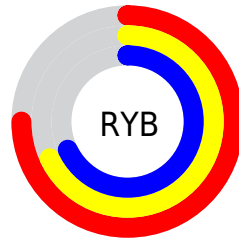
Distribution



Red (75%)

Green (68%)

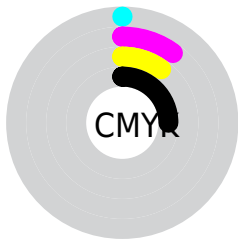
Blue (68%)



Red (75%)

Yellow (68%)

Blue (68%)

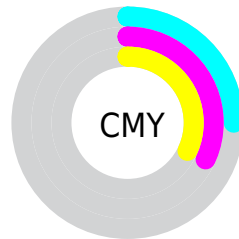


Cyan (0%)

Magenta (10%)

Yellow (10%)

Black (25%)



Cyan (25%)

Magenta (32%)

Yellow (32%)

Brightness & Saturation Gradients

These gradients show how the XYZ color 44.2246, 44.1107, 45.7185 changes by changing the brightness by 10 percent. The first figure shows a shift by +10% for each color and the second figure -10%.

Similar to the brightness gradients but the following saturation gradients show a change of the XYZ color 44.2246, 44.1107, 45.7185 by changing the saturation by 10% instead.

■ 44.2246, 44.1107,
45.7185

■ 44.2246, 44.1107,
45.7185

354.4608,
363.1598, 385.9204

■ 31.0458, 30.7575,
31.6767

■ 80.7999, 81.3843,
85.1274

■ 20.7857, 20.4143,
20.8519

104.9270,
106.0735, 111.3315

■ 13.0790, 12.6966,
12.8256

133.4343,
135.3102, 142.4269

■ 7.5604, 7.2199,
7.1792

166.6872,
169.4788, 178.8320

■ 3.8644, 3.6000,
3.4943

205.0509,
208.9637, 220.9653

■ 1.6257, 1.4524,
1.3522

248.8908,

■ 0.4091, 0.2549,

254.1492, 269.2455

0.1040

298.5723,
305.4198, 324.0910

■ 0.0000, 0.0000,
0.0000

■ 44.2246, 44.1107,
45.7185

■ 44.2246, 44.1107,
45.7185

■ 39.0785, 36.5809,
35.4863

■ 50.1691, 52.8090,
57.5352

■ 34.6934, 30.1642,
26.7684

■ 56.9400, 62.7165,
70.9966

■ 31.0342, 24.8098,
19.4940

■ 64.5686, 73.8789,
86.1635

■ 28.0618, 20.4603,
13.5851

■ 73.0835, 86.3380,
103.0924

■ 25.7334, 17.0531,
8.9566

■ 75.5484, 89.9466,
107.9873

■ 24.0013, 14.5184,
5.5138

■ 22.8114, 12.7771,
3.1489

■ 22.0997, 11.7354,
1.7346

■ 21.7421, 11.2121,
1.0240

Harmonies

Analogous

The Analogous color harmony consists of three colors that are next to each other on the color wheel.



44.3361, 44.1107, 49.2384



44.2246, 44.1107, 45.7185



43.4903, 44.1107, 42.9520

Triad

The Triadic color harmony groups three colors that are evenly spaced from another and form a triangle on the color wheel.



44.2246, 44.1107, 45.7185



40.1135, 44.1107, 43.7377



41.5085, 44.1107, 55.1271

Complementary

The Complementary color scheme is a pair of colors which are on the opposite of each other on the color wheel.



44.2246, 44.1107, 45.7185



45.5975, 50.3884, 57.1923

Split Complementary

Split-complementary colors differ from the complementary color scheme. The scheme consists of three colors, the original color and two neighbors of the complement color.



40.3994, 44.1107, 53.4912



44.2246, 44.1107, 45.7185



39.6046, 44.1107, 46.8397

Square

The Square scheme is like the rectangle color scheme, but the four colors are evenly spaced on the color wheel.



44.2246, 44.1107, 45.7185



41.1112, 44.1107, 41.8484



39.7083, 44.1107, 50.4162



42.7513, 44.1107, 54.7901

Rectangle

The Rectangle color scheme consists of four colors that form a rectangle on the color wheel.



44.2246, 44.1107, 45.7185



42.7545, 44.1107, 41.8513



39.7083, 44.1107, 50.4162



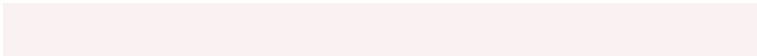
41.1081, 44.1107, 54.7866

Sweetspot

The Sweet Spot groups the original color and five complimentary colors.



44.2258, 44.1126, 45.7194



87.3487, 90.4858, 97.1838



46.1968, 44.9000, 56.1014



18.5482, 19.1327, 20.4694



92.9021, 97.7402, 106.4391



19.4759, 20.4902, 22.3138

Same Dimension

The Same Dimension uses a secret algorithm to generate beautiful new colors.



44.2258, 44.1126, 45.7194



77.8666, 76.6111, 78.3325



46.1121, 47.8853, 46.3482



10.0734, 10.0782, 10.4762



14.6278, 7.5414, 0.6847



0.6321, 0.3259, 0.0296

Inverse Universe

The Inverse Universe completely reimagines the original color for something new.



45.5975, 50.3884, 57.1923



80.8811, 90.4036, 103.5470



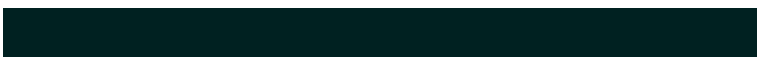
43.5791, 46.3517, 56.5196



10.3684, 11.4282, 12.9442



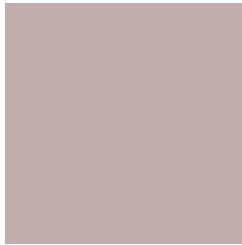
19.0811, 27.9187, 37.9398



0.8245, 1.2064, 1.6393

Previews

White Background



This preview shows how the XYZ color 44.2246, 44.1107, 45.7185 looks on a white background.

Color Contrast Check

Large Text (above 18pt) WCAG AA × Fail

Any Text WCAG AA × Fail

Large Text (above 18pt) WCAG AAA × Fail

Any Text WCAG AAA × Fail

Black Background



This preview shows how the XYZ color 44.2246, 44.1107, 45.7185 looks on a black background.

Color Contrast Check

Large Text (above 18pt) WCAG AA ✓ Pass

Any Text WCAG AA ✓ Pass

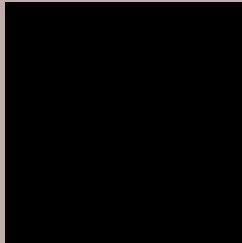
Large Text (above 18pt) WCAG AAA ✓ Pass

Any Text WCAG AAA ✓ Pass

If you want to check with other color combinations, try the [Color Contrast Checker](#).

XYZ 44.2246, 44.1107, 45.7185

Background



This preview shows how black text looks on a background with the XYZ color 44.2246, 44.1107, 45.7185.



This preview shows how white text looks on a background with the XYZ color 44.2246, 44.1107,

45.7185.

Color Blindness Simulation

Color vision deficiency is a very complex topic, and I could not describe the different causes any better than Wikipedia does, so if you want to learn more, you should check out their [article about color blindness](#).

Dichromacy



Original Color

44.2246, 44.1107, 45.7185

Protanopia

42.5161, 44.3632, 46.8796

Deuteranopia

45.0603, 44.2579, 45.7029



Tritanopia

45.5680, 44.0979, 52.0090

Trichromacy



Original Color

44.2246, 44.1107, 45.7185

Protanomaly

43.1729, 44.4209, 46.3430

Deuteranomaly

44.8010, 44.1243, 45.6907

Tritanomaly

45.0853, 44.1787, 49.8672

Monochromacy



Original Color

44.2246, 44.1107, 45.7185

Achromatopsia

42.8472, 45.0786, 49.0906

Achromatomaly

43.4251, 44.8090, 47.9552

CSS Examples

Text

The CSS property to change the color of the text to XYZ 44.2246, 44.1107, 45.7185 is called "color". The color property can be set on classes, ids or directly on the HTML element.

This example shows how text in the color `rgb(192, 173, 173)` looks like.

```
.text, #text, p{  
    color:rgb(192, 173, 173)  
}
```

If you want to add a text shadow in that color use the text-shadow property, you can generate a text shadow directly with our [CSS Text Shadow Generator](#).

Here you see how black text with a 4 pixel rgb(192, 173, 173) colored shadow looks like.

```
.shadow{ text-shadow: 4px 4px 2px rgb(192, 173, 173) }
```

Border

The CSS property to change the border of an element to XYZ 44.2246, 44.1107, 45.7185 is called "border". The border property can be set on classes, ids or directly on the HTML element.

This example shows the color as border, it can be applied via the CSS property "border" or "border-color".

```
.border, #border, table{ border:4px solid rgb(192, 173, 173) }
```


If only the border color should be changed use the property `border-color`.

```
.border{ border-color:rgb(192, 173, 173) }
```

If you want to add a box shadow in that color use:

Here you see how a box with a 4 pixel `rgb(192, 173, 173)` colored shadow looks like.

```
.boxshadow{ -moz-box-shadow:4px 4px 4px  
4px rgb(192, 173, 173); -webkit-box-  
shadow:4px 4px 4px 4px rgb(192, 173, 173);  
box-shadow:4px 4px 4px 4px rgb(192, 173,  
173) }
```

Background

The CSS property to change the background color of an element to XYZ 44.2246, 44.1107, 45.7185 is called "background". The background property can be set on classes, ids or directly on the HTML element.

```
.background, #background, body{  
background: rgb(192, 173, 173) }
```

If only the background color should be changed can be used:

```
.background{ background-color: rgb(192,  
173, 173) }
```

This example shows the color as background, it is applied via the CSS property "background".

To optimize and compress your CSS code, you can use our [online CSS compressor and optimizer](#) based on csstidy. If you want to create a linear or radial gradient as background or border, check our [CSS Gradient Generator](#).

Hey! You found this booklet interesting? Support Converting Colors with the new Membership Option!

The pro membership hides all ads, plus gives you double the colors in the color bucket, and more awesome pro features!

[Learn more, Memberships starting at \\$2.50/m!](#)

**Follow me
on Twitter!**

@ConvertingColor