

Converting Colors

XYZ(44.1110, 44.9064, 52.8367)

Have a look what the booklet for
XYZ(44.1110, 44.9064, 52.8367)
contains.

XYZ(43.9167, 44.6631, 52.7606)	3
<i>Conversions</i>	4
<i>Details</i>	6
<i>Harmonies</i>	12
<i>Previews</i>	24
<i>Color Blindness Simulation</i>	28
<i>CSS Examples</i>	31

Color

**XYZ(43.9167, 44.6631,
52.7606)**

Conversions

Conversions Part 1

Format	Color
Hex	B7B0BA
RGB	183, 176, 186
RGB Percent	72%, 69%, 73%
CMY	0.2823, 0.3098, 0.2706
CMYK	0.02, 0.05, 0.00, 0.27
HSL	282°, 7%, 71%
HSV	282°, 5%, 73%
XYZ	43.9167, 44.6631, 52.7606
YIQ	179.2330, 0.9620, 4.5940

Conversions

Conversions Part 2

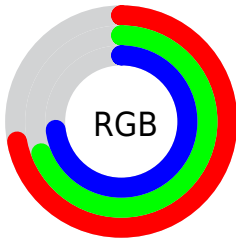
Format	Color
R_{YB}	183, 176, 186
Decimal	12038330
CIE Lab	72.67, 4.35, -4.21
CIE LCh	73, 6.054, 315.926
Yxy	44.6631, 0.3107, 0.3160
Android (android.graphics.Color)	4290228410 (0xFFB7B0BA)
YUV	179.2330, 3.3361, 3.3037
Hunter-Lab	66.8305, 0.3455, -0.0263

Details

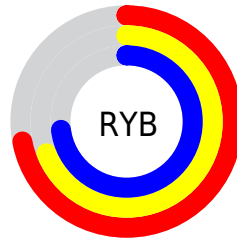
The XYZ color **43.9167, 44.6631, 52.7606** is a light color, and the websafe version is hex **CCCCCC**. A complement of this color would be **43.9875, 47.8373, 47.9917**, and the grayscale version is **42.9555, 45.1925, 49.2146**.

A 20% lighter version of the original color is **80.4802, 82.4748, 95.6819**, and **20.6472, 20.8546, 25.1274** is the 20% darker color. If you saturate the color by 10%, you get **39.2157, 37.1926, 51.5671**, and if you desaturate by 10%, it is **49.1726, 53.1640, 54.1251**.

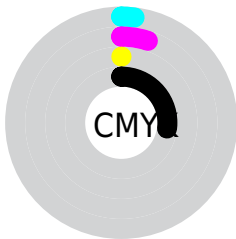
Distribution



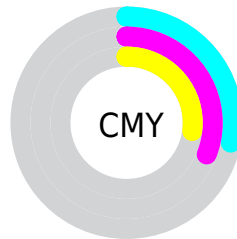
- Red (72%)
- Green (69%)
- Blue (73%)



- Red (72%)
- Yellow (69%)
- Blue (73%)



- Cyan (2%)
- Magenta (5%)
- Yellow (0%)
- Black (27%)



- Cyan (28%)
- Magenta (31%)
- Yellow (27%)

Brightness & Saturation Gradients

These gradients show how the XYZ color 43.9167, 44.6631, 52.7606 changes by changing the brightness by 10 percent. The first figure shows a shift by +10% for each color and the second figure -10%.

Similar to the brightness gradients but the following saturation gradients show a change of the XYZ color 43.9167, 44.6631, 52.7606 by changing the saturation by 10% instead.

■ 43.9167, 44.6631,
52.7606

■ 43.9167, 44.6631,
52.7606

353.2262,
365.4074, 414.4062

■ 30.8027, 31.1921,
37.2253

■ 80.3395, 82.2146,
95.6900

■ 20.5997, 20.7452,
25.0848

104.3790,
107.0640, 123.9211

■ 12.9425, 12.9379,
15.9207

132.7910,
136.4749, 157.2213

■ 7.4657, 7.3858,
9.3143

165.9408,
170.8319, 196.0090

■ 3.8039, 3.7045,
4.8471

204.1939,
210.5192, 240.7028

■ 1.5918, 1.5097,
2.1007

247.9156,

■ 0.3871, 0.2955,

255.9213, 291.7212

0.6162

297.4713,
307.4226, 349.4828

■ 0.0000, 0.0000,
0.0000

■ 43.9167, 44.6631,
52.7606

■ 43.9167, 44.6631,
52.7606

■ 39.2157, 37.1926,
51.5671

■ 49.1726, 53.1640,
54.1251

■ 35.0450, 30.7061,
50.5349

■ 54.9992, 62.7278,
55.6640

■ 31.3838, 25.1620,
49.6577

■ 61.4164, 73.3930,
57.3844

■ 28.2080, 20.5136,
48.9279

■ 68.4420, 85.1941,
59.2919

■ 25.4920, 16.7101,
48.3369

■ 71.4612, 88.9008,
59.8483

■ 23.2072, 13.6955,
47.8754

■ 73.0874, 89.7391,
59.9244

■ 21.3217, 11.4068,
47.5331

■ 74.7696, 90.6064,
60.0031

■ 19.7986, 9.7714,
47.2977

■ 76.5085, 91.5028,
60.0845

■ 18.5924, 8.6995,
47.1543

■ 78.3045, 92.4287,
60.1685

Harmonies

Analogous

The Analogous color harmony consists of three colors that are next to each other on the color wheel.



43.0068, 44.6631, 54.4000



43.9167, 44.6631, 52.7606



44.4378, 44.6631, 50.0489

Triad

The Triadic color harmony groups three colors that are evenly spaced from another and form a triangle on the color wheel.



43.9167, 44.6631, 52.7606



42.9433, 44.6631, 43.2394



40.5406, 44.6631, 50.2330

Complementary

The Complementary color scheme is a pair of colors which are on the opposite of each other on the color wheel.



43.9167, 44.6631, 52.7606



43.9875, 47.8373, 47.9917

Split Complementary

Split-complementary colors differ from the complementary color scheme. The scheme consists of three colors, the original color and two neighbors of the complement color.



40.5242, 44.6631, 47.2392



43.9167, 44.6631, 52.7606



41.8998, 44.6631, 43.2841

Square

The Square scheme is like the rectangle color scheme, but the four colors are evenly spaced on the color wheel.



43.9167, 44.6631, 52.7606



43.8696, 44.6631, 44.5971



41.0182, 44.6631, 44.7218



41.0632, 44.6631, 52.9001

Rectangle

The Rectangle color scheme consists of four colors that form a rectangle on the color wheel.



43.9167, 44.6631, 52.7606



44.4891, 44.6631, 48.0365



41.0182, 44.6631, 44.7218



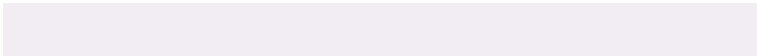
40.4760, 44.6631, 49.2294

Sweetspot

The Sweet Spot groups the original color and five complimentary colors.



43.9180, 44.6650, 52.7616



82.6722, 85.8939, 96.4233



42.9227, 45.0842, 52.8949



18.2271, 18.9497, 21.2395



90.7827, 95.5105, 104.0109



18.6292, 19.5994, 21.3438

Same Dimension

The Same Dimension uses a secret algorithm to generate beautiful new colors.



43.9180, 44.6650, 52.7616



78.9520, 79.9138, 95.4651



44.4456, 44.9594, 51.7756



9.4050, 9.4925, 11.4160



12.2536, 5.6281, 31.6936



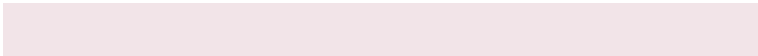
0.4913, 0.2290, 1.1201

Inverse Universe

The Inverse Universe completely reimagines the original color for something new.



43.9133, 44.7465, 48.9725



78.9453, 80.0822, 87.6977



43.4842, 47.5568, 48.9213



9.4044, 9.5141, 10.4225



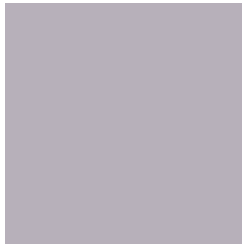
14.1300, 7.2258, 3.3054



0.5264, 0.2660, 0.2653

Previews

White Background



This preview shows how the XYZ color 43.9167, 44.6631, 52.7606 looks on a white background.

Color Contrast Check

Large Text (above 18pt) WCAG AA × Fail

Any Text WCAG AA × Fail

Large Text (above 18pt) WCAG AAA × Fail

Any Text WCAG AAA × Fail

Black Background



This preview shows how the XYZ color 43.9167, 44.6631, 52.7606 looks on a black background.

Color Contrast Check

Large Text (above 18pt) WCAG AA ✓ Pass

Any Text WCAG AA ✓ Pass

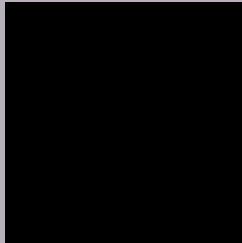
Large Text (above 18pt) WCAG AAA ✓ Pass

Any Text WCAG AAA ✓ Pass

If you want to check with other color combinations, try the [Color Contrast Checker](#).

XYZ 43.9167, 44.6631, 52.7606

Background



This preview shows how black text looks on a background with the XYZ color 43.9167, 44.6631, 52.7606.



This preview shows how white text looks on a background with the XYZ color 43.9167, 44.6631,

52.7606.

Color Blindness Simulation

Color vision deficiency is a very complex topic, and I could not describe the different causes any better than Wikipedia does, so if you want to learn more, you should check out their [article about color blindness](#).

Dichromacy



Original Color

43.9167, 44.6631, 52.7606

Protanopia

43.2822, 44.6158, 53.3442

Deuteranopia

45.6514, 44.6815, 53.2320



Tritanopia

44.2824, 44.5244, 54.4042

Trichromacy



Original Color

43.9167, 44.6631, 52.7606

Protanomaly

43.5142, 44.7354, 53.3551

Deuteranomaly

45.0920, 44.6788, 53.2610

Tritanomaly

44.1742, 44.4811, 53.8344

Monochromacy



Original Color

43.9167, 44.6631, 52.7606

Achromatopsia

42.8472, 45.0786, 49.0906

Achromatomaly

43.1863, 44.9215, 50.6505

CSS Examples

Text

The CSS property to change the color of the text to XYZ 43.9167, 44.6631, 52.7606 is called "color". The color property can be set on classes, ids or directly on the HTML element.

This example shows how text in the color rgb(183, 176, 186) looks like.

```
.text, #text, p{  
    color:rgb(183, 176, 186)  
}
```

If you want to add a text shadow in that color use the text-shadow property, you can generate a text shadow directly with our [CSS Text Shadow Generator](#).

Here you see how black text with a 4 pixel rgb(183, 176, 186) colored shadow looks like.

```
.shadow{ text-shadow: 4px 4px 2px rgb(183, 176, 186) }
```

Border

The CSS property to change the border of an element to XYZ 43.9167, 44.6631, 52.7606 is called "border". The border property can be set on classes, ids or directly on the HTML element.

This example shows the color as border, it can be applied via the CSS property "border" or "border-color".

```
.border, #border, table{ border:4px solid rgb(183, 176, 186) }
```


If only the border color should be changed use the property `border-color`.

```
.border{ border-color:rgb(183, 176, 186) }
```

If you want to add a box shadow in that color use:

Here you see how a box with a 4 pixel `rgb(183, 176, 186)` colored shadow looks like.

```
.boxshadow{ -moz-box-shadow:4px 4px 4px  
4px rgb(183, 176, 186); -webkit-box-  
shadow:4px 4px 4px 4px rgb(183, 176, 186);  
box-shadow:4px 4px 4px 4px rgb(183, 176,  
186) }
```

Background

The CSS property to change the background color of an element to XYZ 43.9167, 44.6631, 52.7606 is called "background". The background property can be set on classes, ids or directly on the HTML element.

```
.background, #background, body{  
background: rgb(183, 176, 186) }
```

If only the background color should be changed can be used:

```
.background{ background-color: rgb(183,  
176, 186) }
```

This example shows the color as background, it is applied via the CSS property "background".

To optimize and compress your CSS code, you can use our [online CSS compressor and optimizer](#) based on csstidy. If you want to create a linear or radial gradient as background or border, check our [CSS Gradient Generator](#).

Hey! You found this booklet interesting? Support Converting Colors with the new Membership Option!

The pro membership hides all ads, plus gives you double the colors in the color bucket, and more awesome pro features!

[Learn more, Memberships starting at \\$2.50/m!](#)

**Follow me
on Twitter!**

@ConvertingColor