

Converting Colors

XYZ(44.1366, 35.2443, 35.2100)

Have a look what the booklet for
XYZ(44.1366, 35.2443, 35.2100)
contains.

XYZ(44.1521, 35.1571, 35.0308)	3
<i>Conversions</i>	4
<i>Details</i>	6
<i>Harmonies</i>	12
<i>Previews</i>	24
<i>Color Blindness Simulation</i>	28
<i>CSS Examples</i>	31

Color

**XYZ(44.1521, 35.1571,
35.0308)**

Conversions

Conversions Part 1

Format	Color
Hex	DC889A
RGB	220, 136, 154
RGB Percent	86%, 53%, 60%
CMY	0.1373, 0.4666, 0.3961
CMYK	0.00, 0.38, 0.30, 0.14
HSL	347°, 55%, 70%
HSV	347°, 38%, 86%
XYZ	44.1521, 35.1571, 35.0308
YIQ	163.1680, 44.2860, 23.4060

Conversions

Conversions Part 2

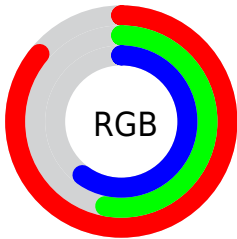
Format	Color
R _Y B	220, 136, 154
Decimal	14452890
CIE Lab	65.87, 34.34, 4.11
CIE LCh	66, 34.589, 6.829
Yxy	35.1571, 0.3861, 0.3075
Android (android.graphics.Color)	4292642970 (0xFFDC889A)
YUV	163.1680, -4.5198, 49.8417
Hunter-Lab	59.2934, 29.1543, 6.4766

Details

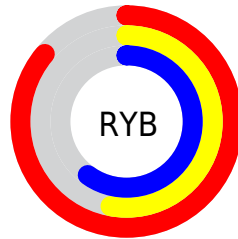
The XYZ color **44.1521, 35.1571, 35.0308** is a light color, and the websafe version is hex **FF9999**. A complement of this color would be **46.4088, 60.6857, 65.1478**, and the grayscale version is **34.8991, 36.7165, 39.9843**.

A 20% lighter version of the original color is **71.0386, 62.6410, 68.0213**, and **20.8009, 15.2628, 14.6816** is the 20% darker color. If you saturate the color by 10%, you get **40.0281, 29.0496, 27.0570**, and if you desaturate by 10%, it is **49.1213, 42.6227, 44.3100**.

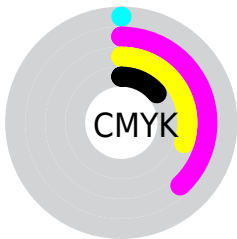
Distribution



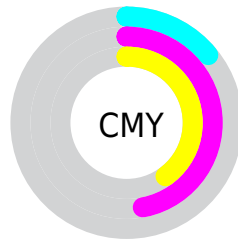
- Red (86%)
- Green (53%)
- Blue (60%)



- Red (86%)
- Yellow (53%)
- Blue (60%)



- Cyan (0%)
- Magenta (38%)
- Yellow (30%)
- Black (14%)



- Cyan (14%)
- Magenta (47%)
- Yellow (40%)

Brightness & Saturation Gradients

These gradients show how the XYZ color 44.1521, 35.1571, 35.0308 changes by changing the brightness by 10 percent. The first figure shows a shift by +10% for each color and the second figure -10%.

Similar to the brightness gradients but the following saturation gradients show a change of the XYZ color 44.1521, 35.1571, 35.0308 by changing the saturation by 10% instead.

■ 44.1521, 35.1571,
35.0308

■ 44.1521, 35.1571,
35.0308

354.1703,
325.2612, 339.6126

■ 30.9885, 23.7839,
23.4029

■ 80.6915, 67.7291,
68.6856

■ 20.7419, 15.1734,
14.6832

■ 104.7980, 89.6966,
91.5495

■ 13.0469, 8.9412,
8.4532

■ 133.2829,
115.9645, 118.9959

■ 7.5380, 4.7028,
4.2944

166.5115,
146.9169, 151.4432

■ 3.8501, 2.0740,
1.7882

204.8492,
182.9385, 189.3099

■ 1.6177, 0.6499,
0.4201

248.6614,

■ 0.4039, 0.0000,

224.4134, 233.0148

0.0000

298.3133,
271.7262, 282.9761

■ 0.0000, 0.0000,
0.0000

■ 44.1521, 35.1571,
35.0308

■ 44.1521, 35.1571,
35.0308

■ 40.0281, 29.0496,
27.0570

■ 49.1213, 42.6227,
44.3100

■ 36.6984, 24.2132,
20.3271

■ 54.9769, 51.5163,
54.9483

■ 34.1110, 20.5588,
14.7774

■ 61.7609, 61.9090,
66.9986

■ 32.2063, 17.9836,
10.3377

■ 69.5117, 73.8659,
80.5105

■ 30.9150, 16.3668,
6.9296

■ 78.2657, 87.4480,
95.5310

■ 30.1405, 15.5353,
4.4595

■ 83.3252, 93.9557,
108.3513

■ 30.0310, 15.4220,
4.0973

Harmonies

Analogous

The Analogous color harmony consists of three colors that are next to each other on the color wheel.



43.2873, 35.1571, 50.4548



44.1521, 35.1571, 35.0308



41.9138, 35.1571, 23.7685

Triad

The Triadic color harmony groups three colors that are evenly spaced from another and form a triangle on the color wheel.



44.1521, 35.1571, 35.0308



27.8652, 35.1571, 19.8847



29.6967, 35.1571, 70.4158

Complementary

The Complementary color scheme is a pair of colors which are on the opposite of each other on the color wheel.



44.1521, 35.1571, 35.0308



46.4088, 60.6857, 65.1478

Split Complementary

Split-complementary colors differ from the complementary color scheme. The scheme consists of three colors, the original color and two neighbors of the complement color.



26.1518, 35.1571, 57.7469



44.1521, 35.1571, 35.0308



25.1721, 35.1571, 28.2407

Square

The Square scheme is like the rectangle color scheme, but the four colors are evenly spaced on the color wheel.



44.1521, 35.1571, 35.0308



32.2611, 35.1571, 16.5861



24.5784, 35.1571, 41.7244



34.5977, 35.1571, 73.5700

Rectangle

The Rectangle color scheme consists of four colors that form a rectangle on the color wheel.



44.1521, 35.1571, 35.0308



39.0854, 35.1571, 19.2265



24.5784, 35.1571, 41.7244



28.3228, 35.1571, 66.9960

Sweetspot

The Sweet Spot groups the original color and five complimentary colors.



44.1531, 35.1588, 35.0315



83.3976, 82.0517, 88.5025



46.0267, 35.3062, 72.0991



17.5678, 17.1288, 18.4423



0.0000, 0.0000, 0.0000



20.3446, 21.4041, 23.3091

Same Dimension

The Same Dimension uses a secret algorithm to generate beautiful new colors.



44.1531, 35.1588, 35.0315



56.8812, 41.9893, 39.6775



46.4965, 42.0672, 28.9639



13.1696, 13.0970, 14.1545



17.6585, 9.0644, 2.5815



1.1761, 0.6001, 0.3362

Inverse Universe

The Inverse Universe completely reimagines the original color for something new.



44.1531, 35.1588, 35.0315



56.8812, 41.9893, 39.6775



42.8581, 49.9730, 75.0971



13.1696, 13.0970, 14.1545



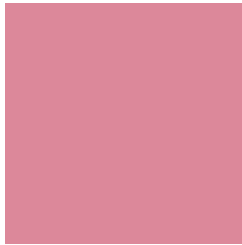
17.6585, 9.0644, 2.5815



1.1761, 0.6001, 0.3362

Previews

White Background



This preview shows how the XYZ color 44.1521, 35.1571, 35.0308 looks on a white background.

Color Contrast Check

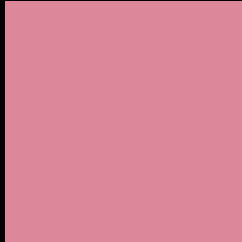
Large Text (above 18pt) WCAG AA × Fail

Any Text WCAG AA × Fail

Large Text (above 18pt) WCAG AAA × Fail

Any Text WCAG AAA × Fail

Black Background



This preview shows how the XYZ color 44.1521, 35.1571, 35.0308 looks on a black background.

Color Contrast Check

Large Text (above 18pt) WCAG AA ✓ Pass

Any Text WCAG AA ✓ Pass

Large Text (above 18pt) WCAG AAA ✓ Pass

Any Text WCAG AAA ✓ Pass

If you want to check with other color combinations, try the [Color Contrast Checker](#).

XYZ 44.1521, 35.1571, 35.0308

Background



This preview shows how black text looks on a background with the XYZ color 44.1521, 35.1571, 35.0308.



This preview shows how white text looks on a background with the XYZ color 44.1521, 35.1571,

Color Blindness Simulation

Color vision deficiency is a very complex topic, and I could not describe the different causes any better than Wikipedia does, so if you want to learn more, you should check out their [article about color blindness](#).

Dichromacy



Original Color

44.1521, 35.1571, 35.0308

Protanopia

34.2438, 35.5087, 41.6082

Deuteranopia

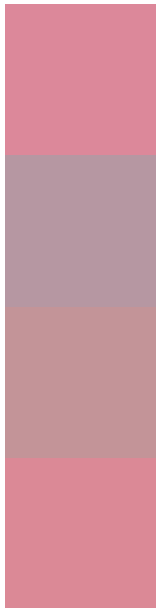
36.1296, 35.3804, 34.2030



Tritanopia

43.4255, 35.0580, 32.0819

Trichromacy



Original Color

44.1521, 35.1571, 35.0308

Protanomaly

36.8796, 34.6869, 38.9339

Deuteranomaly

38.7631, 35.0489, 34.4278

Tritanomaly

43.6641, 35.1534, 33.3381

Monochromacy



Original Color

44.1521, 35.1571, 35.0308

Achromatopsia

34.8123, 36.6253, 39.8849

Achromatomaly

37.5036, 35.5109, 38.1353

CSS Examples

Text

The CSS property to change the color of the text to XYZ 44.1521, 35.1571, 35.0308 is called "color". The color property can be set on classes, ids or directly on the HTML element.

This example shows how text in the color `rgb(220, 136, 154)` looks like.

```
.text, #text, p{  
    color:rgb(220, 136, 154)  
}
```

If you want to add a text shadow in that color use the text-shadow property, you can generate a text shadow directly with our [CSS Text Shadow Generator](#).

Here you see how black text with a 4 pixel rgb(220, 136, 154) colored shadow looks like.

```
.shadow{ text-shadow: 4px 4px 2px rgb(220, 136, 154) }
```

Border

The CSS property to change the border of an element to XYZ 44.1521, 35.1571, 35.0308 is called "border". The border property can be set on classes, ids or directly on the HTML element.

This example shows the color as border, it can be applied via the CSS property "border" or "border-color".

```
.border, #border, table{ border:4px solid rgb(220, 136, 154) }
```


If only the border color should be changed use the property `border-color`.

```
.border{ border-color:rgb(220, 136, 154) }
```

If you want to add a box shadow in that color use:

Here you see how a box with a 4 pixel `rgb(220, 136, 154)` colored shadow looks like.

```
.boxshadow{ -moz-box-shadow:4px 4px 4px  
4px rgb(220, 136, 154); -webkit-box-  
shadow:4px 4px 4px 4px rgb(220, 136, 154);  
box-shadow:4px 4px 4px 4px rgb(220, 136,  
154) }
```

Background

The CSS property to change the background color of an element to XYZ 44.1521, 35.1571, 35.0308 is called "background". The background property can be set on classes, ids or directly on the HTML element.

```
.background, #background, body{  
background: rgb(220, 136, 154) }
```

If only the background color should be changed can be used:

```
.background{ background-color: rgb(220,  
136, 154) }
```

This example shows the color as background, it is applied via the CSS property "background".

To optimize and compress your CSS code, you can use our [online CSS compressor and optimizer](#) based on csstidy. If you want to create a linear or radial gradient as background or border, check our [CSS Gradient Generator](#).

Hey! You found this booklet interesting? Support Converting Colors with the new Membership Option!

The pro membership hides all ads, plus gives you double the colors in the color bucket, and more awesome pro features!

[Learn more, Memberships starting at \\$2.50/m!](#)

**Follow me
on Twitter!**

@ConvertingColor