

Converting Colors

XYZ(44.1979, 44.2870, 46.6593)

Have a look what the booklet for
XYZ(44.1979, 44.2870, 46.6593)
contains.

XYZ(44.3598, 44.4436, 46.7979)	3
<i>Conversions</i>	4
<i>Details</i>	6
<i>Harmonies</i>	12
<i>Previews</i>	24
<i>Color Blindness Simulation</i>	28
<i>CSS Examples</i>	31

Color

**XYZ(44.3598, 44.4436,
46.7979)**

Conversions

Conversions Part 1

Format	Color
Hex	BFAEAF
RGB	191, 174, 175
RGB Percent	75%, 68%, 69%
CMY	0.2510, 0.3176, 0.3137
CMYK	0.00, 0.09, 0.08, 0.25
HSL	356°, 12%, 72%
HSV	356°, 9%, 75%
XYZ	44.3598, 44.4436, 46.7979
YIQ	179.1970, 9.8110, 3.9150

Conversions

Conversions Part 2

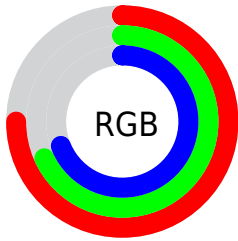
Format	Color
R _Y B	191, 174, 175
Decimal	12562095
CIE Lab	72.52, 6.27, 1.69
CIE LCh	73, 6.497, 15.116
Yxy	44.4436, 0.3271, 0.3278
Android (android.graphics.Color)	4290752175 (0xFFBFAEAF)
YUV	179.1970, -2.0691, 10.3512
Hunter-Lab	66.6660, 2.1089, 5.0461

Details

The XYZ color **44.3598, 44.4436, 46.7979** is a light color, and the websafe version is hex **999999**. A complement of this color would be **45.3824, 49.9792, 55.9727**, and the grayscale version is **42.9608, 45.1981, 49.2208**.

A 20% lighter version of the original color is **80.6600, 81.5260, 86.3478**, and **21.0159, 20.7524, 21.6368** is the 20% darker color. If you saturate the color by 10%, you get **39.2792, 36.9224, 36.9643**, and if you desaturate by 10%, it is **50.2028, 53.1121, 58.0468**.

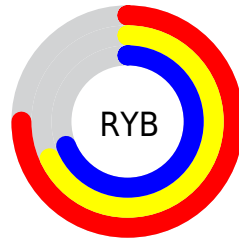
Distribution



Red (75%)

Green (68%)

Blue (69%)



Red (75%)

Yellow (68%)

Blue (69%)

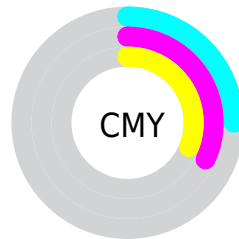


Cyan (0%)

Magenta (9%)

Yellow (8%)

Black (25%)



Cyan (25%)

Magenta (32%)

Yellow (31%)

Brightness & Saturation Gradients

These gradients show how the XYZ color 44.3598, 44.4436, 46.7979 changes by changing the brightness by 10 percent. The first figure shows a shift by +10% for each color and the second figure -10%.

Similar to the brightness gradients but the following saturation gradients show a change of the XYZ color 44.3598, 44.4436, 46.7979 by changing the saturation by 10% instead.

■ 44.3598, 44.4436,
46.7979

■ 44.3598, 44.4436,
46.7979

355.0020,
364.5154, 390.3776

■ 31.1526, 31.0194,
32.5227

■ 81.0019, 81.8848,
86.7587

■ 20.8675, 20.6136,
21.4929

105.1675,
106.6707, 113.2814

■ 13.1391, 12.8419,
13.2901

133.7165,
136.0125, 144.7236

■ 7.6020, 7.3197,
7.4955

167.0145,
170.2947, 181.5040

■ 3.8910, 3.6629,
3.6908

205.4267,
209.9017, 224.0411

■ 1.6407, 1.4868,
1.4573

249.3184,

■ 0.4187, 0.2794,

255.2179, 272.7534

0.1858

299.0550,
306.6277, 328.0594

■ 0.0000, 0.0000,
0.0000

■ 44.3598, 44.4436,
46.7979

■ 44.3598, 44.4436,
46.7979

■ 39.2792, 36.9224,
36.9643

■ 50.2028, 53.1121,
58.0468

■ 34.9260, 30.4950,
28.4872

■ 56.8339, 62.9671,
70.7610

■ 31.2680, 25.1122,
21.3080

■ 64.2821, 74.0530,
84.9914

■ 28.2691, 20.7189,
15.3625

■ 72.5741, 86.4102,
100.7859

■ 25.8902, 17.2547,
10.5813

■ 75.2961, 89.8165,
107.9755

■ 24.0877, 14.6528,
6.8880

■ 22.8126, 12.8376,
4.1969

■ 22.0075, 11.7201,
2.4098

■ 21.5828, 11.1517,
1.4019

Harmonies

Analogous

The Analogous color harmony consists of three colors that are next to each other on the color wheel.



44.3621, 44.4436, 49.9963



44.3598, 44.4436, 46.7979



43.7833, 44.4436, 44.1438

Triad

The Triadic color harmony groups three colors that are evenly spaced from another and form a triangle on the color wheel.



44.3598, 44.4436, 46.7979



40.7319, 44.4436, 44.1604



41.6905, 44.4436, 54.6128

Complementary

The Complementary color scheme is a pair of colors which are on the opposite of each other on the color wheel.



44.3598, 44.4436, 46.7979



45.3824, 49.9792, 55.9727

Split Complementary

Split-complementary colors differ from the complementary color scheme. The scheme consists of three colors, the original color and two neighbors of the complement color.



40.7379, 44.4436, 52.9033



44.3598, 44.4436, 46.7979



40.1911, 44.4436, 46.8215

Square

The Square scheme is like the rectangle color scheme, but the four colors are evenly spaced on the color wheel.



44.3598, 44.4436, 46.7979



41.6821, 44.4436, 42.6676



40.1933, 44.4436, 50.0209



42.8075, 44.4436, 54.6058

Rectangle

The Rectangle color scheme consists of four colors that form a rectangle on the color wheel.



44.3598, 44.4436, 46.7979



43.1568, 44.4436, 42.9994



40.1933, 44.4436, 50.0209



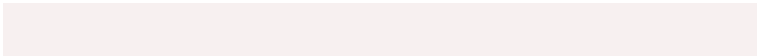
41.3409, 44.4436, 54.2166

Sweetspot

The Sweet Spot groups the original color and five complimentary colors.



44.3610, 44.4456, 46.7989



85.4031, 88.4295, 95.2898



45.7433, 44.9656, 55.5592



18.5659, 19.1396, 20.5632



92.9021, 97.7402, 106.4391



19.4759, 20.4902, 22.3138

Same Dimension

The Same Dimension uses a secret algorithm to generate beautiful new colors.



44.3610, 44.4456, 46.7989



77.2613, 76.3584, 79.5892



45.7257, 47.3310, 46.7725



9.5522, 9.5452, 10.0311



14.1710, 7.2996, 0.9283



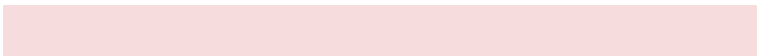
0.5629, 0.2891, 0.0777

Inverse Universe

The Inverse Universe completely reimagines the original color for something new.



44.3610, 44.4456, 46.7989



77.2613, 76.3584, 79.5892



43.9256, 46.8907, 56.0265



9.5522, 9.5452, 10.0311



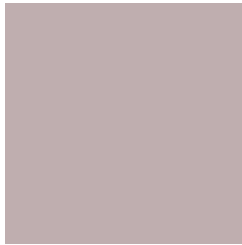
14.1710, 7.2996, 0.9283



0.5629, 0.2891, 0.0777

Previews

White Background



This preview shows how the XYZ color 44.3598, 44.4436, 46.7979 looks on a white background.

Color Contrast Check

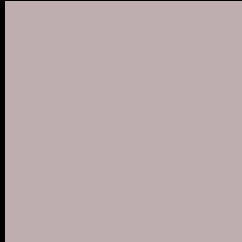
Large Text (above 18pt) WCAG AA × Fail

Any Text WCAG AA × Fail

Large Text (above 18pt) WCAG AAA × Fail

Any Text WCAG AAA × Fail

Black Background



This preview shows how the XYZ color 44.3598, 44.4436, 46.7979 looks on a black background.

Color Contrast Check

Large Text (above 18pt) WCAG AA ✓ Pass

Any Text WCAG AA ✓ Pass

Large Text (above 18pt) WCAG AAA ✓ Pass

Any Text WCAG AAA ✓ Pass

If you want to check with other color combinations, try the [Color Contrast Checker](#).

XYZ 44.3598, 44.4436, 46.7979

Background



This preview shows how black text looks on a background with the XYZ color 44.3598, 44.4436, 46.7979.



This preview shows how white text looks on a background with the XYZ color 44.3598, 44.4436,

Color Blindness Simulation

Color vision deficiency is a very complex topic, and I could not describe the different causes any better than Wikipedia does, so if you want to learn more, you should check out their [article about color blindness](#).

Dichromacy



Original Color

44.3598, 44.4436, 46.7979

Protanopia

42.7140, 44.4424, 47.9219

Deuteranopia

45.2553, 44.3360, 46.7299



Tritanopia

45.6078, 44.3877, 52.6183

Trichromacy



Original Color

44.3598, 44.4436, 46.7979

Protanomaly

43.3694, 44.4995, 47.3778

Deuteranomaly

44.9296, 44.4516, 46.7694

Tritanomaly

45.1253, 44.4710, 50.4614

Monochromacy



Original Color

44.3598, 44.4436, 46.7979

Achromatopsia

42.8472, 45.0786, 49.0906

Achromatomaly

43.2865, 44.7259, 48.4710

CSS Examples

Text

The CSS property to change the color of the text to XYZ 44.3598, 44.4436, 46.7979 is called "color". The color property can be set on classes, ids or directly on the HTML element.

This example shows how text in the color `rgb(191, 174, 175)` looks like.

```
.text, #text, p{  
    color:rgb(191, 174, 175)  
}
```

If you want to add a text shadow in that color use the text-shadow property, you can generate a text shadow directly with our [CSS Text Shadow Generator](#).

Here you see how black text with a 4 pixel rgb(191, 174, 175) colored shadow looks like.

```
.shadow{ text-shadow: 4px 4px 2px rgb(191, 174, 175) }
```

Border

The CSS property to change the border of an element to XYZ 44.3598, 44.4436, 46.7979 is called "border". The border property can be set on classes, ids or directly on the HTML element.

This example shows the color as border, it can be applied via the CSS property "border" or "border-color".

```
.border, #border, table{ border:4px solid rgb(191, 174, 175) }
```


If only the border color should be changed use the property `border-color`.

```
.border{ border-color:rgb(191, 174, 175) }
```

If you want to add a box shadow in that color use:

Here you see how a box with a 4 pixel `rgb(191, 174, 175)` colored shadow looks like.

```
.boxshadow{ -moz-box-shadow:4px 4px 4px  
4px rgb(191, 174, 175); -webkit-box-  
shadow:4px 4px 4px 4px rgb(191, 174, 175);  
box-shadow:4px 4px 4px 4px rgb(191, 174,  
175) }
```

Background

The CSS property to change the background color of an element to XYZ 44.3598, 44.4436, 46.7979 is called "background". The background property can be set on classes, ids or directly on the HTML element.

```
.background, #background, body{  
background: rgb(191, 174, 175) }
```

If only the background color should be changed can be used:

```
.background{ background-color: rgb(191,  
174, 175) }
```

This example shows the color as background, it is applied via the CSS property "background".

To optimize and compress your CSS code, you can use our [online CSS compressor and optimizer](#) based on csstidy. If you want to create a linear or radial gradient as background or border, check our [CSS Gradient Generator](#).

Hey! You found this booklet interesting? Support Converting Colors with the new Membership Option!

The pro membership hides all ads, plus gives you double the colors in the color bucket, and more awesome pro features!

[Learn more, Memberships starting at \\$2.50/m!](#)

**Follow me
on Twitter!**

@ConvertingColor