

Converting Colors

XYZ(44.3166, 41.5859, 36.7748)

Have a look what the booklet for
XYZ(44.3166, 41.5859, 36.7748)
contains.

XYZ(44.1904, 41.5401, 36.6993)	3
<i>Conversions</i>	4
<i>Details</i>	6
<i>Harmonies</i>	12
<i>Previews</i>	24
<i>Color Blindness Simulation</i>	28
<i>CSS Examples</i>	31

Color

**XYZ(44.1904, 41.5401,
36.6993)**

Conversions

Conversions Part 1

Format	Color
Hex	CDA39B
RGB	205, 163, 155
RGB Percent	80%, 64%, 61%
CMY	0.1961, 0.3608, 0.3922
CMYK	0.00, 0.20, 0.24, 0.20
HSL	10°, 33%, 71%
HSV	10°, 24%, 80%
XYZ	44.1904, 41.5401, 36.6993
YIQ	174.6460, 27.6000, 6.4160

Conversions

Conversions Part 2

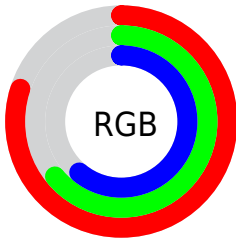
Format	Color
R _Y B	205, 165, 155
Decimal	13476763
CIE Lab	70.55, 14.27, 10.04
CIE LCh	71, 17.454, 35.127
Yxy	41.5401, 0.3609, 0.3393
Android (android.graphics.Color)	4291666843 (0xFFCDA39B)
YUV	174.6460, -9.6855, 26.6205
Hunter-Lab	64.4516, 9.5959, 11.3559

Details

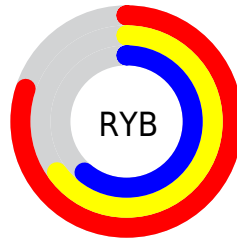
The XYZ color **44.1904, 41.5401, 36.6993** is a light color, and the websafe version is hex **CC9999**. A complement of this color would be **44.5027, 51.3073, 65.3155**, and the grayscale version is **40.6040, 42.7186, 46.5205**.

A 20% lighter version of the original color is **77.8200, 76.0063, 70.8907**, and **20.7608, 18.8524, 15.6414** is the 20% darker color. If you saturate the color by 10%, you get **39.7611, 35.2066, 27.4379**, and if you desaturate by 10%, it is **49.3305, 48.8269, 47.6406**.

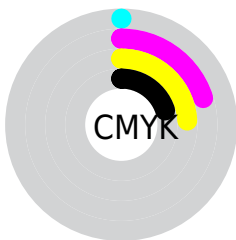
Distribution



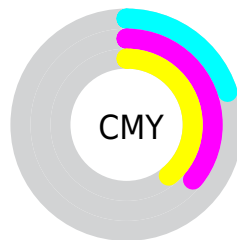
- Red (80%)
- Green (64%)
- Blue (61%)



- Red (80%)
- Yellow (65%)
- Blue (61%)



- Cyan (0%)
- Magenta (20%)
- Yellow (24%)
- Black (20%)





- Cyan (20%)
- Magenta (36%)
- Yellow (39%)

Brightness & Saturation Gradients

These gradients show how the XYZ color 44.1904, 41.5401, 36.6993 changes by changing the brightness by 10 percent. The first figure shows a shift by +10% for each color and the second figure -10%.


Similar to the brightness gradients but the following saturation gradients show a change of the XYZ color 44.1904, 41.5401, 36.6993 by changing the saturation by 10% instead.

 44.1904, 41.5401,
36.6993

 44.1904, 41.5401,
36.6993


354.3238,
352.5729, 347.1362

 31.0188, 28.7414,
24.6808


 80.7487, 77.5031,
71.2912

 20.7650, 18.8852,
15.6225

 104.8662,
101.4362, 94.7017

 13.0638, 11.5874,
9.1060


133.3629,
129.8494, 122.7466

 7.5498, 6.4634,
4.7126

166.6043,
163.1273, 155.8445

 3.8576, 3.1288,
2.0239

204.9558,
201.6542, 194.4138

 1.6219, 1.1994,
0.5699

248.7826,

 0.4066, 0.0612,

245.8145, 238.8732

0.0000

298.4501,
295.9926, 289.6412

0.0000, 0.0000,
0.0000

44.1904, 41.5401,
36.6993

44.1904, 41.5401,
36.6993

39.7611, 35.2066,
27.4379

49.3305, 48.8269,
47.6406

36.0078, 29.7812,
19.7705

55.2076, 57.0982,
60.3366

32.8977, 25.2239,
13.6075

61.8505, 66.3910,
74.8609

30.3940, 21.4891,
8.8494

69.2856, 76.7385,
91.2820

28.4559, 18.5273,
5.3846

77.1325, 88.0104,
107.5301

■ 27.0376, 16.2833,
3.0845

■ 78.9869, 91.7192,
108.1483

■ 26.0852, 14.6945,
1.7935

■ 25.7157, 14.0568,
1.3579

Harmonies

Analogous

The Analogous color harmony consists of three colors that are next to each other on the color wheel.



45.2630, 41.5401, 43.8266



44.1904, 41.5401, 36.6993



41.8595, 41.5401, 32.3058

Triad

The Triadic color harmony groups three colors that are evenly spaced from another and form a triangle on the color wheel.



44.1904, 41.5401, 36.6993



34.6656, 41.5401, 38.8781



39.9799, 41.5401, 62.9495

Complementary

The Complementary color scheme is a pair of colors which are on the opposite of each other on the color wheel.



44.1904, 41.5401, 36.6993



44.5027, 51.3073, 65.3155

Split Complementary

Split-complementary colors differ from the complementary color scheme. The scheme consists of three colors, the original color and two neighbors of the complement color.



37.1975, 41.5401, 61.2099



44.1904, 41.5401, 36.6993



34.2166, 41.5401, 46.6633

Square

The Square scheme is like the rectangle color scheme, but the four colors are evenly spaced on the color wheel.



44.1904, 41.5401, 36.6993



36.3792, 41.5401, 33.4524



35.1217, 41.5401, 54.9900



42.7577, 41.5401, 59.4911

Rectangle

The Rectangle color scheme consists of four colors that form a rectangle on the color wheel.



44.1904, 41.5401, 36.6993



39.9552, 41.5401, 31.1886



35.1217, 41.5401, 54.9900



39.0138, 41.5401, 62.9571

Sweetspot

The Sweet Spot groups the original color and five complimentary colors.



44.1915, 41.5420, 36.7002



87.7103, 89.7078, 92.9282



47.0339, 40.4765, 58.4582



18.6445, 19.0196, 19.6107



0.0000, 0.0000, 0.0000



20.3446, 21.4041, 23.3091

Same Dimension

The Same Dimension uses a secret algorithm to generate beautiful new colors.



44.1915, 41.5420, 36.7002



68.6309, 62.6887, 52.2259



48.9701, 51.0992, 38.2930



11.3550, 11.4989, 11.7005



16.0549, 8.8427, 0.8606



0.8750, 0.5498, 0.0600

Inverse Universe

The Inverse Universe completely reimagines the original color for something new.



44.5027, 51.3073, 65.3155



69.2168, 81.2479, 106.6420



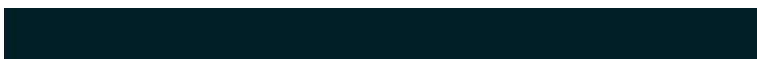
39.3853, 41.0725, 63.6097



11.3844, 12.4093, 14.3656



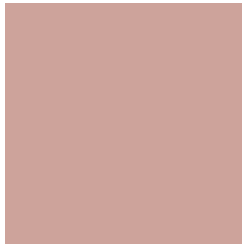
16.1240, 21.2719, 39.2123



0.8738, 1.1814, 2.0369

Previews

White Background



This preview shows how the XYZ color 44.1904, 41.5401, 36.6993 looks on a white background.

Color Contrast Check

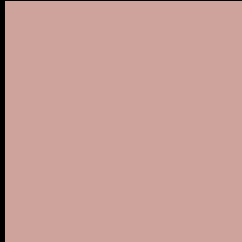
Large Text (above 18pt) WCAG AA × Fail

Any Text WCAG AA × Fail

Large Text (above 18pt) WCAG AAA × Fail

Any Text WCAG AAA × Fail

Black Background



This preview shows how the XYZ color 44.1904, 41.5401, 36.6993 looks on a black background.

Color Contrast Check

Large Text (above 18pt) WCAG AA ✓ Pass

Any Text WCAG AA ✓ Pass

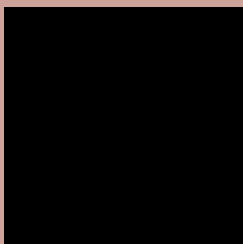
Large Text (above 18pt) WCAG AAA ✓ Pass

Any Text WCAG AAA ✓ Pass

If you want to check with other color combinations, try the [Color Contrast Checker](#).

XYZ 44.1904, 41.5401, 36.6993

Background



This preview shows how black text looks on a background with the XYZ color 44.1904, 41.5401, 36.6993.



This preview shows how white text looks on a background with the XYZ color 44.1904, 41.5401,

Color Blindness Simulation

Color vision deficiency is a very complex topic, and I could not describe the different causes any better than Wikipedia does, so if you want to learn more, you should check out their [article about color blindness](#).

Dichromacy



Original Color

44.1904, 41.5401, 36.6993

Protanopia

39.6881, 41.6268, 39.2007

Deuteranopia

42.4164, 41.7063, 36.3864



Tritanopia

45.8458, 41.4241, 45.1145

Trichromacy



Original Color

44.1904, 41.5401, 36.6993

Protanomaly

41.0986, 41.5359, 38.1989

Deuteranomaly

43.0221, 41.7476, 36.3624

Tritanomaly

45.0814, 41.3647, 41.6845

Monochromacy



Original Color

44.1904, 41.5401, 36.6993

Achromatopsia

40.7470, 42.8690, 46.6844

Achromatomaly

41.8805, 42.3921, 43.0209

CSS Examples

Text

The CSS property to change the color of the text to XYZ 44.1904, 41.5401, 36.6993 is called "color". The color property can be set on classes, ids or directly on the HTML element.

This example shows how text in the color rgb(205, 163, 155) looks like.

```
.text, #text, p{  
    color:rgb(205, 163, 155)  
}
```

If you want to add a text shadow in that color use the text-shadow property, you can generate a text shadow directly with our [CSS Text Shadow Generator](#).

Here you see how black text with a 4 pixel rgb(205, 163, 155) colored shadow looks like.

```
.shadow{ text-shadow: 4px 4px 2px rgb(205, 163, 155) }
```

Border

The CSS property to change the border of an element to XYZ 44.1904, 41.5401, 36.6993 is called "border". The border property can be set on classes, ids or directly on the HTML element.

This example shows the color as border, it can be applied via the CSS property "border" or "border-color".

```
.border, #border, table{ border:4px solid rgb(205, 163, 155) }
```


If only the border color should be changed use the property `border-color`.

```
.border{ border-color:rgb(205, 163, 155) }
```

If you want to add a box shadow in that color use:

Here you see how a box with a 4 pixel `rgb(205, 163, 155)` colored shadow looks like.

```
.boxshadow{ -moz-box-shadow:4px 4px 4px  
4px rgb(205, 163, 155); -webkit-box-  
shadow:4px 4px 4px 4px rgb(205, 163, 155);  
box-shadow:4px 4px 4px 4px rgb(205, 163,  
155) }
```

Background

The CSS property to change the background color of an element to XYZ 44.1904, 41.5401, 36.6993 is called "background". The background property can be set on classes, ids or directly on the HTML element.

```
.background, #background, body{  
background: rgb(205, 163, 155) }
```

If only the background color should be changed can be used:

```
.background{ background-color: rgb(205,  
163, 155) }
```

This example shows the color as background, it is applied via the CSS property "background".

To optimize and compress your CSS code, you can use our [online CSS compressor and optimizer](#) based on csstidy. If you want to create a linear or radial gradient as background or border, check our [CSS Gradient Generator](#).

Hey! You found this booklet interesting? Support Converting Colors with the new Membership Option!

The pro membership hides all ads, plus gives you double the colors in the color bucket, and more awesome pro features!

[Learn more, Memberships starting at \\$2.50/m!](#)

**Follow me
on Twitter!**

@ConvertingColor