

Converting Colors

XYZ(44.3841, 44.5118, 44.2826)

Have a look what the booklet for
XYZ(44.3841, 44.5118, 44.2826)
contains.

XYZ(44.3841, 44.5118, 44.2826)	3
<i>Conversions</i>	4
<i>Details</i>	6
<i>Harmonies</i>	12
<i>Previews</i>	24
<i>Color Blindness Simulation</i>	28
<i>CSS Examples</i>	31

Color

**XYZ(44.3841, 44.5118,
44.2826)**

Conversions

Conversions Part 1

Format	Color
Hex	C1AEAA
RGB	193, 174, 170
RGB Percent	76%, 68%, 67%
CMY	0.2431, 0.3176, 0.3333
CMYK	0.00, 0.10, 0.12, 0.24
HSL	10°, 16%, 71%
HSV	10°, 12%, 76%
XYZ	44.3841, 44.5118, 44.2826
YIQ	179.2250, 12.6080, 2.7840

Conversions

Conversions Part 2

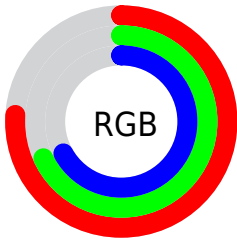
Format	Color
RYB	193, 175, 170
Decimal	12693162
CIELab	72.57, 6.15, 4.53
CIELCh	73, 7.634, 36.362
Yxy	44.5118, 0.3333, 0.3342
Android (android.graphics.Color)	4290883242 (0xFFC1AEAA)
YUV	179.2250, -4.5479, 12.0807
Hunter-Lab	66.7172, 1.9934, 7.3491

Details

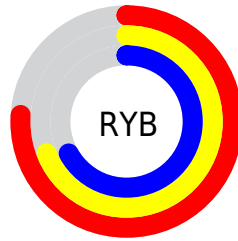
The XYZ color **44.3841, 44.5118, 44.2826** is a light color, and the websafe version is hex **999999**. A complement of this color would be **44.4008, 48.7908, 57.5301**, and the grayscale version is **42.9875, 45.2262, 49.2513**.

A 20% lighter version of the original color is **81.0343, 81.7989, 82.7520**, and **20.8770, 20.7160, 20.0378** is the 20% darker color. If you saturate the color by 10%, you get **39.7920, 38.0377, 34.3959**, and if you desaturate by 10%, it is **49.6123, 51.8281, 55.7048**.

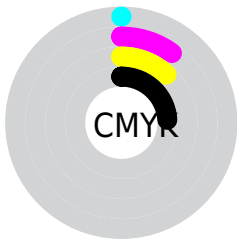
Distribution



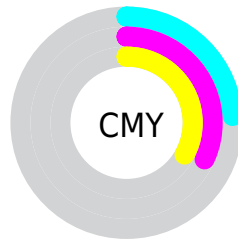
- Red (76%)
- Green (68%)
- Blue (67%)



- Red (76%)
- Yellow (69%)
- Blue (67%)



- Cyan (0%)
- Magenta (10%)
- Yellow (12%)
- Black (24%)



- Cyan (24%)
- Magenta (32%)
- Yellow (33%)

Brightness & Saturation Gradients

These gradients show how the XYZ color 44.3841, 44.5118, 44.2826 changes by changing the brightness by 10 percent. The first figure shows a shift by +10% for each color and the second figure -10%.

Similar to the brightness gradients but the following saturation gradients show a change of the XYZ color 44.3841, 44.5118, 44.2826 by changing the saturation by 10% instead.

■ 44.3841, 44.5118,
44.2826

■ 44.3841, 44.5118,
44.2826

355.0992,
364.7927, 379.9353

■ 31.1718, 31.0731,
30.5539

■ 81.0382, 81.9873,
82.9498

■ 20.8822, 20.6545,
20.0038

105.2107,
106.7929, 108.7254

■ 13.1499, 12.8717,
12.2137

133.7673,
136.1562, 139.3538

■ 7.6095, 7.3402,
6.7651

167.0733,
170.4617, 175.2534

■ 3.8958, 3.6758,
3.2394

205.4942,
210.0937, 216.8428

■ 1.6434, 1.4939,
1.2181

249.3952,

■ 0.4204, 0.2844,

255.4366, 264.5406

0.0000

299.1418,
306.8748, 318.7652

■ 0.0000, 0.0000,
0.0000

■ 44.3841, 44.5118,
44.2826

■ 44.3841, 44.5118,
44.2826

■ 39.7920, 38.0377,
34.3959

■ 49.6123, 51.8281,
55.7048

■ 35.8078, 32.3697,
25.9763

■ 55.4959, 60.0092,
68.7213

■ 32.4070, 27.4780,
18.9545

■ 62.0579, 69.0843,
83.3911

■ 29.5615, 23.3283,
13.2545

■ 69.3193, 79.0795,
99.7694

■ 27.2413, 19.8842,
8.7930

■ 75.3921, 89.2566,
107.8624

■ 25.4131, 17.1058,
5.4771

■ 75.8026, 90.0776,
107.9992

■ 24.0399, 14.9493,
3.2008

■ 23.0789, 13.3653,
1.8381

■ 22.5530, 12.4585,
1.2160

Harmonies

Analogous

The Analogous color harmony consists of three colors that are next to each other on the color wheel.



44.8801, 44.5118, 47.6647



44.3841, 44.5118, 44.2826



43.3330, 44.5118, 42.1071

Triad

The Triadic color harmony groups three colors that are evenly spaced from another and form a triangle on the color wheel.



44.3841, 44.5118, 44.2826



40.0243, 44.5118, 45.6093



42.5890, 44.5118, 56.0548

Complementary

The Complementary color scheme is a pair of colors which are on the opposite of each other on the color wheel.



44.3841, 44.5118, 44.2826



44.4008, 48.7908, 57.5301

Split Complementary

Split-complementary colors differ from the complementary color scheme. The scheme consists of three colors, the original color and two neighbors of the complement color.



41.2976, 44.5118, 55.4345



44.3841, 44.5118, 44.2826



39.8345, 44.5118, 49.2758

Square

The Square scheme is like the rectangle color scheme, but the four colors are evenly spaced on the color wheel.



44.3841, 44.5118, 44.2826



40.8201, 44.5118, 42.8448



40.2960, 44.5118, 52.9044



43.8299, 44.5118, 54.5581

Rectangle

The Rectangle color scheme consists of four colors that form a rectangle on the color wheel.



44.3841, 44.5118, 44.2826



42.4684, 44.5118, 41.5674



40.2960, 44.5118, 52.9044



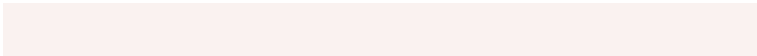
42.1463, 44.5118, 56.0880

Sweetspot

The Sweet Spot groups the original color and five complimentary colors.



44.3853, 44.5138, 44.2835



86.7486, 89.8835, 95.1404



45.5711, 43.7690, 54.2860



18.4533, 19.0634, 20.0663



92.9021, 97.7402, 106.4391



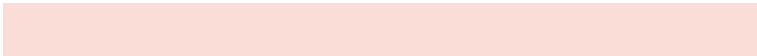
19.4759, 20.4902, 22.3138

Same Dimension

The Same Dimension uses a secret algorithm to generate beautiful new colors.



44.3853, 44.5138, 44.2835



77.5006, 76.9221, 74.9948



46.6674, 49.0780, 45.0442



10.2118, 10.3550, 10.5224



15.0418, 8.3694, 0.8227



0.6946, 0.4511, 0.0505

Inverse Universe

The Inverse Universe completely reimagines the original color for something new.



44.4008, 48.7908, 57.5301



77.5324, 85.9174, 102.8576



42.0580, 44.1053, 56.7492



10.2146, 11.1205, 12.8929



14.7471, 19.2507, 36.4951



0.6773, 0.9121, 1.5902

Previews

White Background



This preview shows how the XYZ color 44.3841, 44.5118, 44.2826 looks on a white background.

Color Contrast Check

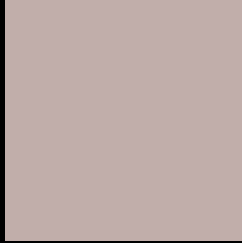
Large Text (above 18pt) WCAG AA × Fail

Any Text WCAG AA × Fail

Large Text (above 18pt) WCAG AAA × Fail

Any Text WCAG AAA × Fail

Black Background



This preview shows how the XYZ color 44.3841, 44.5118, 44.2826 looks on a black background.

Color Contrast Check

Large Text (above 18pt) WCAG AA ✓ Pass

Any Text WCAG AA ✓ Pass

Large Text (above 18pt) WCAG AAA ✓ Pass

Any Text WCAG AAA ✓ Pass

If you want to check with other color combinations, try the [Color Contrast Checker](#).

XYZ 44.3841, 44.5118, 44.2826

Background



This preview shows how black text looks on a background with the XYZ color 44.3841, 44.5118, 44.2826.



This preview shows how white text looks on a background with the XYZ color 44.3841, 44.5118,

Color Blindness Simulation

Color vision deficiency is a very complex topic, and I could not describe the different causes any better than Wikipedia does, so if you want to learn more, you should check out their [article about color blindness](#).

Dichromacy



Original Color

44.3841, 44.5118, 44.2826

Protanopia

42.6970, 44.4901, 45.3668

Deuteranopia

45.2969, 44.4131, 44.2154



Tritanopia

46.0152, 44.6099, 52.0843

Trichromacy



Original Color

44.3841, 44.5118, 44.2826

Protanomaly

43.3695, 44.5557, 44.8424

Deuteranomaly

44.9642, 44.5252, 44.2546

Tritanomaly

45.4299, 44.6518, 49.4043

Monochromacy



Original Color

44.3841, 44.5118, 44.2826

Achromatopsia

42.8472, 45.0786, 49.0906

Achromatomaly

43.3258, 44.7692, 47.4321

CSS Examples

Text

The CSS property to change the color of the text to XYZ 44.3841, 44.5118, 44.2826 is called "color". The color property can be set on classes, ids or directly on the HTML element.

This example shows how text in the color `rgb(193, 174, 170)` looks like.

```
.text, #text, p{  
    color:rgb(193, 174, 170)  
}
```

If you want to add a text shadow in that color use the text-shadow property, you can generate a text shadow directly with our [CSS Text Shadow Generator](#).

Here you see how black text with a 4 pixel rgb(193, 174, 170) colored shadow looks like.

```
.shadow{ text-shadow: 4px 4px 2px rgb(193, 174, 170) }
```

Border

The CSS property to change the border of an element to XYZ 44.3841, 44.5118, 44.2826 is called "border". The border property can be set on classes, ids or directly on the HTML element.

This example shows the color as border, it can be applied via the CSS property "border" or "border-color".

```
.border, #border, table{ border:4px solid rgb(193, 174, 170) }
```


If only the border color should be changed use the property `border-color`.

```
.border{ border-color:rgb(193, 174, 170) }
```

If you want to add a box shadow in that color use:

Here you see how a box with a 4 pixel `rgb(193, 174, 170)` colored shadow looks like.

```
.boxshadow{ -moz-box-shadow:4px 4px 4px  
4px rgb(193, 174, 170); -webkit-box-  
shadow:4px 4px 4px 4px rgb(193, 174, 170);  
box-shadow:4px 4px 4px 4px rgb(193, 174,  
170) }
```

Background

The CSS property to change the background color of an element to XYZ 44.3841, 44.5118, 44.2826 is called "background". The background property can be set on classes, ids or directly on the HTML element.

```
.background, #background, body{  
background: rgb(193, 174, 170) }
```

If only the background color should be changed can be used:

```
.background{ background-color: rgb(193,  
174, 170) }
```

This example shows the color as background, it is applied via the CSS property "background".

To optimize and compress your CSS code, you can use our [online CSS compressor and optimizer](#) based on csstidy. If you want to create a linear or radial gradient as background or border, check our [CSS Gradient Generator](#).

Hey! You found this booklet interesting? Support Converting Colors with the new Membership Option!

The pro membership hides all ads, plus gives you double the colors in the color bucket, and more awesome pro features!

[Learn more, Memberships starting at \\$2.50/m!](#)

**Follow me
on Twitter!**

@ConvertingColor