

# Converting Colors

XYZ(44.5214, 23.4976, 16.3576)

Have a look what the booklet for  
XYZ(44.5214, 23.4976, 16.3576)  
contains.

<b>XYZ(44.5188, 23.4868, 16.3744)</b> .....	3
<i><b>Conversions</b></i> .....	4
<i><b>Details</b></i> .....	6
<i><b>Harmonies</b></i> .....	12
<i><b>Previews</b></i> .....	24
<i><b>Color Blindness Simulation</b></i> .....	28
<i><b>CSS Examples</b></i> .....	31

# Color

**XYZ(44.5188, 23.4868,  
16.3744)**

# Conversions

## Conversions Part 1

Format	Color
Hex	FF226C
RGB	255, 34, 108
RGB Percent	100%, 13%, 42%
CMY	0.0000, 0.8666, 0.5765
CMYK	0.00, 0.87, 0.58, 0.00
HSL	340°, 100%, 57%
HSV	340°, 87%, 100%
XYZ	44.5188, 23.4868, 16.3744
YIQ	108.5150, 107.9620, 69.8660

# Conversions

## Conversions Part 2

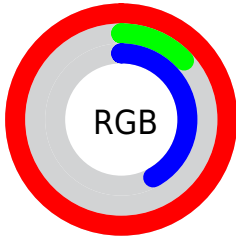
<b>Format</b>	<b>Color</b>
<b>R<sub>YB</sub></b>	255, 34, 108
Decimal	16720492
CIE <sub>Lab</sub>	55.57, 79.81, 17.04
CIE <sub>LCh</sub>	56, 81.610, 12.052
Yxy	23.4868, 0.5276, 0.2783
Android (android.graphics.Color)	4294910572 (0xFFFF226C)
YUV	108.5150, -0.2539, 128.4673
Hunter-Lab	48.4632, 79.1615, 13.8917

# Details

The XYZ color **44.5188, 23.4868, 16.3744** is a dark color, and the websafe version is hex **FF0066**. The color can be described as dark washed rose. A complement of this color would be **44.7636, 75.1974, 55.8854**, and the grayscale version is **14.3818, 15.1308, 16.4775**.

A 20% lighter version of the original color is **52.8606, 34.4883, 36.6717**, and **22.3282, 11.4133, 5.4410** is the 20% darker color. If you saturate the color by 10%, you get **43.2223, 22.2010, 11.9130**, and if you desaturate by 10%, it is **46.5303, 25.9220, 21.9410**.

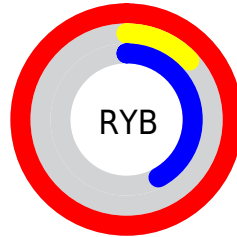
# Distribution



Red (100%)

Green (13%)

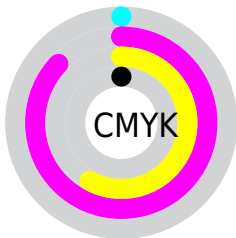
Blue (42%)



Red (100%)

Yellow (13%)

Blue (42%)

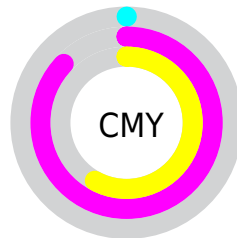


Cyan (0%)

Magenta (87%)

Yellow (58%)

Black (0%)



Cyan (0%)

Magenta (87%)

Yellow (58%)

# Brightness & Saturation Gradients

These gradients show how the XYZ color 44.5188, 23.4868, 16.3744 changes by changing the brightness by 10 percent. The first figure shows a shift by +10% for each color and the second figure -10%.

Similar to the brightness gradients but the following saturation gradients show a change of the XYZ color 44.5188, 23.4868, 16.3744 by changing the saturation by 10% instead.



■ 44.5188, 23.4868,  
16.3744

■ 44.5188, 23.4868,  
16.3744

355.6377,  
270.2155, 243.4616

■ 31.2782, 14.9534,  
9.6323

■ 81.2394, 49.1914,  
38.0228

■ 20.9637, 8.7867,  
5.0534

■ 105.4501, 67.1314,  
53.7661

■ 13.2098, 4.6023,  
2.2194

■ 134.0482, 88.9757,  
73.3468

■ 7.6511, 2.0159,  
0.6855

■ 167.3991,  
115.1087, 97.1836

■ 3.9225, 0.6167,  
0.0000

■ 205.8682,  
145.9148, 125.6949

■ 1.6584, 0.0000,  
0.0000

249.8207,

■ 0.4300, 0.0000,

181.7783, 159.2994

0.0000

299.6221,  
223.0838, 198.4154

■ 0.0000, 0.0000,  
0.0000

■ 44.5188, 23.4868,  
16.3744

■ 44.5188, 23.4868,  
16.3744

■ 43.2223, 22.2010,  
11.9130

■ 46.5303, 25.9220,  
21.9410

■ 42.8940, 21.9216,  
10.6409

■ 49.3675, 29.7120,  
28.6957

■ 53.1213, 35.0252,  
36.7121

■ 57.8698, 42.0047,  
46.0565

■ 63.6823, 50.7763,  
56.7901

70.6215, 61.4542,  
68.9699

78.7451, 74.1427,  
82.6494

88.1070, 88.9385,  
97.8792

95.0498, 99.9999,  
108.9000

# Harmonies

## Analogous

The Analogous color harmony consists of three colors that are next to each other on the color wheel.



43.7757, 23.4868, 44.6116



44.5188, 23.4868, 16.3744



38.2322, 23.4868, 4.4196

# Triad

The Triadic color harmony groups three colors that are evenly spaced from another and form a triangle on the color wheel.



44.5188, 23.4868, 16.3744



12.4353, 23.4868, 3.3707



17.2970, 23.4868, 110.5834

# Complementary

The Complementary color scheme is a pair of colors which are on the opposite of each other on the color wheel.



44.5188, 23.4868, 16.3744



44.7636, 75.1974, 55.8854

# Split Complementary

Split-complementary colors differ from the complementary color scheme. The scheme consists of three colors, the original color and two neighbors of the complement color.



11.5831, 23.4868, 76.8367



44.5188, 23.4868, 16.3744



9.3549, 23.4868, 12.9077

# Square

The Square scheme is like the rectangle color scheme, but the four colors are evenly spaced on the color wheel.



44.5188, 23.4868, 16.3744



18.8248, 23.4868, 1.1269



9.0933, 23.4868, 37.6979



26.2309, 23.4868, 114.2075



# Rectangle

The Rectangle color scheme consists of four colors that form a rectangle on the color wheel.



44.5188, 23.4868, 16.3744



31.6988, 23.4868, 1.8380



9.0933, 23.4868, 37.6979



15.0072, 23.4868, 101.6808

# Sweetspot

The Sweet Spot groups the original color and five complimentary colors.



44.5194, 23.4882, 16.3747



71.1178, 62.2241, 69.8210



36.9047, 17.7903, 96.0960



14.6738, 12.4695, 13.9985



0.0000, 0.0000, 0.0000



20.3446, 21.4041, 23.3091



# Same Dimension

The Same Dimension uses a secret algorithm to generate beautiful new colors.



44.5194, 23.4882, 16.3747



42.8942, 21.9217, 10.6410



43.5464, 25.4105, 4.1250



18.2602, 18.0874, 19.9873



22.4749, 11.4792, 5.8851



2.2367, 1.1370, 0.8277



# Inverse Universe

The Inverse Universe completely reimagines the original color for something new.



44.5194, 23.4882, 16.3747



42.8942, 21.9217, 10.6410



44.7929, 59.7253, 103.7745



18.2602, 18.0874, 19.9873



22.4749, 11.4792, 5.8851



2.2367, 1.1370, 0.8277



# Previews

## White Background



This preview shows how the XYZ color 44.5188, 23.4868, 16.3744 looks on a white background.

## Color Contrast Check

Large Text (above 18pt) WCAG AA ✓ Pass

Any Text WCAG AA × Fail

Large Text (above 18pt) WCAG AAA × Fail

Any Text WCAG AAA × Fail



# Black Background



This preview shows how the XYZ color 44.5188, 23.4868, 16.3744 looks on a black background.

## Color Contrast Check

Large Text (above 18pt) WCAG AA ✓ Pass

Any Text WCAG AA ✓ Pass

Large Text (above 18pt) WCAG AAA ✓ Pass

Any Text WCAG AAA × Fail

If you want to check with other color combinations, try the [Color Contrast Checker](#).

**XYZ 44.5188, 23.4868, 16.3744**

## **Background**



This preview shows how black text looks on a background with the XYZ color 44.5188, 23.4868, 16.3744.



This preview shows how white text looks on a background with the XYZ color 44.5188, 23.4868,



# Color Blindness Simulation

Color vision deficiency is a very complex topic, and I could not describe the different causes any better than Wikipedia does, so if you want to learn more, you should check out their [article about color blindness](#).

## Dichromacy



### Original Color

44.5188, 23.4868, 16.3744

### Protanopia

23.3432, 23.8208, 33.5045

### Deuteranopia

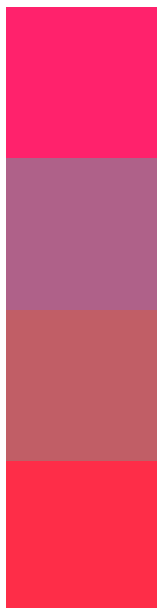
24.0243, 23.5893, 14.8422



## Tritanopia

42.3558, 23.5866, 5.5691

# Trichromacy



## Original Color

44.5188, 23.4868, 16.3744

## Protanomaly

26.4692, 19.4695, 26.0298

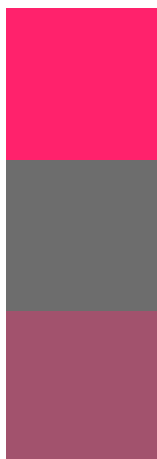
## Deuteranomaly

28.3933, 20.3022, 14.9926

## Tritanomaly

42.9811, 23.4155, 8.3852

# Monochromacy



## Original Color

44.5188, 23.4868, 16.3744

## Achromatopsia

14.5356, 15.2926, 16.6537

## Achromatomaly

20.6779, 14.8201, 16.2387

# CSS Examples

## Text

The CSS property to change the color of the text to XYZ 44.5188, 23.4868, 16.3744 is called "color". The color property can be set on classes, ids or directly on the HTML element.

This example shows how text in the color `rgb(255, 34, 108)` looks like.

```
.text, #text, p{  
  color:rgb(255, 34, 108)  
}
```

If you want to add a text shadow in that color use the text-shadow property, you can generate a text shadow directly with our [CSS Text Shadow Generator](#).

Here you see how black text with a 4 pixel rgb(255, 34, 108) colored shadow looks like.

```
.shadow{ text-shadow: 4px 4px 2px rgb(255, 34, 108) }
```

## Border

The CSS property to change the border of an element to XYZ 44.5188, 23.4868, 16.3744 is called "border". The border property can be set on classes, ids or directly on the HTML element.

This example shows the color as border, it can be applied via the CSS property "border" or "border-color".

```
.border, #border, table{ border:4px solid rgb(255, 34, 108) }
```



If only the border color should be changed use the property border-color.

```
.border{ border-color:rgb(255, 34, 108) }
```

If you want to add a box shadow in that color use:

Here you see how a box with a 4 pixel rgb(255, 34, 108) colored shadow looks like.

```
.boxshadow{ -moz-box-shadow:4px 4px 4px  
4px rgb(255, 34, 108); -webkit-box-  
shadow:4px 4px 4px 4px rgb(255, 34, 108);  
box-shadow:4px 4px 4px 4px rgb(255, 34,  
108) }
```

# Background

The CSS property to change the background color of an element to XYZ 44.5188, 23.4868, 16.3744 is called "background". The background property can be set on classes, ids or directly on the HTML element.

```
.background, #background, body{  
background: rgb(255, 34, 108) }
```

If only the background color should be changed can be used:

```
.background{ background-color: rgb(255, 34,  
108) }
```

This example shows the color as background, it is applied via the CSS property "background".

To optimize and compress your CSS code, you can use our [online CSS compressor and optimizer](#) based on csstidy. If you want to create a linear or radial gradient as background or border, check our [CSS Gradient Generator](#).

Hey! You found this booklet interesting? Support Converting Colors with the new Membership Option!

The pro membership hides all ads, plus gives you double the colors in the color bucket, and more awesome pro features!

**[Learn more, Memberships starting at \\$2.50/m!](#)**

**Follow me  
on Twitter!**

@ConvertingColor