

Converting Colors

XYZ(44.5410, 24.1873, 17.9202)

Have a look what the booklet for
XYZ(44.5410, 24.1873, 17.9202)
contains.

XYZ(44.5456, 24.1888, 17.9439)	3
<i>Conversions</i>	4
<i>Details</i>	6
<i>Harmonies</i>	12
<i>Previews</i>	24
<i>Color Blindness Simulation</i>	28
<i>CSS Examples</i>	31

Color

**XYZ(44.5456, 24.1888,
17.9439)**

Conversions

Conversions Part 1

Format	Color
Hex	FD3071
RGB	253, 48, 113
RGB Percent	99%, 19%, 44%
CMY	0.0078, 0.8117, 0.5569
CMYK	0.00, 0.81, 0.55, 0.01
HSL	341°, 98%, 59%
HSV	341°, 81%, 99%
XYZ	44.5456, 24.1888, 17.9439
YIQ	116.7050, 101.3150, 63.6750

Conversions

Conversions Part 2

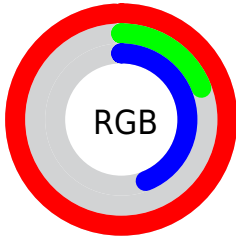
Format	Color
R_YB	253, 48, 113
Decimal	16593009
CIE Lab	56.28, 76.85, 14.96
CIE LCh	56, 78.289, 11.018
Yxy	24.1888, 0.5139, 0.2791
Android (android.graphics.Color)	4294783089 (0xFFFD3071)
YUV	116.7050, -1.8266, 119.5307
Hunter-Lab	49.1821, 75.6037, 12.7958

Details

The XYZ color **44.5456, 24.1888, 17.9439** is a dark color, and the websafe version is hex **FF3366**. The color can be described as middle washed rose. A complement of this color would be **45.4239, 74.5107, 59.5747**, and the grayscale version is **16.8034, 17.6785, 19.2519**.

A 20% lighter version of the original color is **54.1862, 36.4311, 39.2979**, and **21.9696, 11.2122, 6.1605** is the 20% darker color. If you saturate the color by 10%, you get **42.9072, 22.3236, 13.0465**, and if you desaturate by 10%, it is **46.9594, 27.3088, 24.0139**.

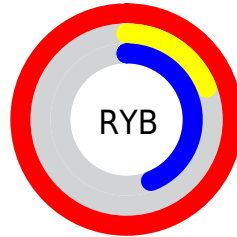
Distribution



Red (99%)

Green (19%)

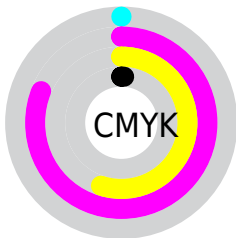
Blue (44%)



Red (99%)

Yellow (19%)

Blue (44%)

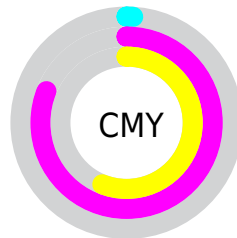


Cyan (0%)

Magenta (81%)

Yellow (55%)

Black (1%)



Cyan (1%)

Magenta (81%)

Yellow (56%)

Brightness & Saturation Gradients

These gradients show how the XYZ color 44.5456, 24.1888, 17.9439 changes by changing the brightness by 10 percent. The first figure shows a shift by +10% for each color and the second figure -10%.

Similar to the brightness gradients but the following saturation gradients show a change of the XYZ color 44.5456, 24.1888, 17.9439 by changing the saturation by 10% instead.

■ 44.5456, 24.1888,
17.9439

■ 44.5456, 24.1888,
17.9439

355.7448,
273.7736, 252.7801

■ 31.2994, 15.4737,
10.7407

■ 81.2794, 50.3381,
40.7544

■ 20.9799, 9.1525,
5.7808

■ 105.4977, 68.5412,
57.1987

■ 13.2217, 4.8408,
2.6456

■ 134.1041, 90.6756,
77.5605

■ 7.6594, 2.1542,
0.9159

■ 167.4639,
117.1260, 102.2583

■ 3.9278, 0.6948,
0.0000

■ 205.9426,
148.2765, 131.7106

■ 1.6614, 0.0000,
0.0000

249.9054,

■ 0.4319, 0.0000,

184.5117, 166.3360

0.0000

299.7177,
226.2160, 206.5530

■ 0.0000, 0.0000,
0.0000

■ 44.5456, 24.1888,
17.9439

■ 44.5456, 24.1888,
17.9439

■ 42.9072, 22.3236,
13.0465

■ 46.9594, 27.3088,
24.0139

■ 41.9634, 21.4648,
9.5605

■ 50.2441, 31.8583,
31.3356

■ 54.4821, 37.9881,
39.9814

■ 59.7456, 45.8289,
50.0171

■ 66.0993, 55.4973,
61.5036

73.6025, 67.0999,
74.4982

82.3101, 80.7349,
89.0546

92.2734, 96.4938,
105.2241

94.3178, 99.6226,
108.8657

Harmonies

Analogous

The Analogous color harmony consists of three colors that are next to each other on the color wheel.



43.5843, 24.1888, 46.0079



44.5456, 24.1888, 17.9439



38.7046, 24.1888, 5.3456

Triad

The Triadic color harmony groups three colors that are evenly spaced from another and form a triangle on the color wheel.



44.5456, 24.1888, 17.9439



13.3883, 24.1888, 3.8326



17.8012, 24.1888, 106.6867

Complementary

The Complementary color scheme is a pair of colors which are on the opposite of each other on the color wheel.



44.5456, 24.1888, 17.9439



45.4239, 74.5107, 59.5747

Split Complementary

Split-complementary colors differ from the complementary color scheme. The scheme consists of three colors, the original color and two neighbors of the complement color.



12.2360, 24.1888, 74.1947



44.5456, 24.1888, 17.9439



10.1869, 24.1888, 13.2660

Square

The Square scheme is like the rectangle color scheme, but the four colors are evenly spaced on the color wheel.



44.5456, 24.1888, 17.9439



19.8347, 24.1888, 1.4835



9.8291, 24.1888, 37.0093



26.4650, 24.1888, 111.2853

Rectangle

The Rectangle color scheme consists of four colors that form a rectangle on the color wheel.



44.5456, 24.1888, 17.9439



32.4531, 24.1888, 2.4068



9.8291, 24.1888, 37.0093



15.5736, 24.1888, 97.9971

Sweetspot

The Sweet Spot groups the original color and five complimentary colors.



44.5462, 24.1902, 17.9443



72.5231, 64.5689, 71.7255



38.7159, 19.4808, 94.6477



14.9382, 12.9159, 14.3403



0.0000, 0.0000, 0.0000



20.3446, 21.4041, 23.3091

Same Dimension

The Same Dimension uses a secret algorithm to generate beautiful new colors.



44.5462, 24.1902, 17.9443



43.0053, 22.0990, 10.8164



44.0727, 27.1582, 5.7175



18.2466, 18.0820, 19.9158



22.3811, 11.4417, 5.3915



2.2263, 1.1329, 0.7730

Inverse Universe

The Inverse Universe completely reimagines the original color for something new.



44.5462, 24.1902, 17.9443



43.0053, 22.0990, 10.8164



44.2381, 58.2981, 101.8492



18.2466, 18.0820, 19.9158



22.3811, 11.4417, 5.3915



2.2263, 1.1329, 0.7730

Previews

White Background



This preview shows how the XYZ color 44.5456, 24.1888, 17.9439 looks on a white background.

Color Contrast Check

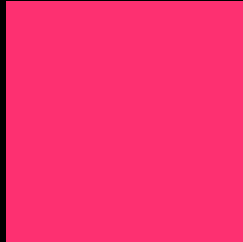
Large Text (above 18pt) WCAG AA ✓ Pass

Any Text WCAG AA × Fail

Large Text (above 18pt) WCAG AAA × Fail

Any Text WCAG AAA × Fail

Black Background



This preview shows how the XYZ color 44.5456, 24.1888, 17.9439 looks on a black background.

Color Contrast Check

Large Text (above 18pt) WCAG AA ✓ Pass

Any Text WCAG AA ✓ Pass

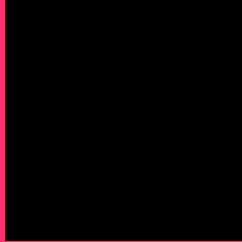
Large Text (above 18pt) WCAG AAA ✓ Pass

Any Text WCAG AAA × Fail

If you want to check with other color combinations, try the [Color Contrast Checker](#).

XYZ 44.5456, 24.1888, 17.9439

Background



This preview shows how black text looks on a background with the XYZ color 44.5456, 24.1888, 17.9439.



This preview shows how white text looks on a background with the XYZ color 44.5456, 24.1888,

17.9439.

Color Blindness Simulation

Color vision deficiency is a very complex topic, and I could not describe the different causes any better than Wikipedia does, so if you want to learn more, you should check out their [article about color blindness](#).

Dichromacy



Original Color

44.5456, 24.1888, 17.9439

Protanopia

24.0416, 24.3560, 34.8865

Deuteranopia

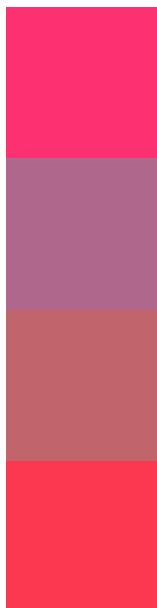
24.7289, 24.3155, 16.2220



Tritanopia

42.3496, 24.2056, 7.1427

Trichromacy



Original Color

44.5456, 24.1888, 17.9439

Protanomaly

27.4884, 20.8241, 27.3816

Deuteranomaly

29.2033, 21.5133, 16.5232

Tritanomaly

43.0443, 24.1179, 10.1711

Monochromacy



Original Color

44.5456, 24.1888, 17.9439

Achromatopsia

16.9083, 17.7888, 19.3720

Achromatomaly

22.7054, 17.0222, 18.6119

CSS Examples

Text

The CSS property to change the color of the text to XYZ 44.5456, 24.1888, 17.9439 is called "color". The color property can be set on classes, ids or directly on the HTML element.

This example shows how text in the color `rgb(253, 48, 113)` looks like.

```
.text, #text, p{  
    color:rgb(253, 48, 113)  
}
```

If you want to add a text shadow in that color use the text-shadow property, you can generate a text shadow directly with our [CSS Text Shadow Generator](#).

Here you see how black text with a 4 pixel rgb(253, 48, 113) colored shadow looks like.

```
.shadow{ text-shadow: 4px 4px 2px rgb(253, 48, 113) }
```

Border

The CSS property to change the border of an element to XYZ 44.5456, 24.1888, 17.9439 is called "border". The border property can be set on classes, ids or directly on the HTML element.

This example shows the color as border, it can be applied via the CSS property "border" or "border-color".

```
.border, #border, table{ border:4px solid rgb(253, 48, 113) }
```


If only the border color should be changed use the property `border-color`.

```
.border{ border-color:rgb(253, 48, 113) }
```

If you want to add a box shadow in that color use:

Here you see how a box with a 4 pixel `rgb(253, 48, 113)` colored shadow looks like.

```
.boxshadow{ -moz-box-shadow:4px 4px 4px  
4px rgb(253, 48, 113); -webkit-box-  
shadow:4px 4px 4px 4px rgb(253, 48, 113);  
box-shadow:4px 4px 4px 4px rgb(253, 48,  
113) }
```

Background

The CSS property to change the background color of an element to XYZ 44.5456, 24.1888, 17.9439 is called "background". The background property can be set on classes, ids or directly on the HTML element.

```
.background, #background, body{  
background: rgb(253, 48, 113) }
```

If only the background color should be changed can be used:

```
.background{ background-color: rgb(253, 48,  
113) }
```

This example shows the color as background, it is applied via the CSS property "background".

To optimize and compress your CSS code, you can use our [online CSS compressor and optimizer](#) based on csstidy. If you want to create a linear or radial gradient as background or border, check our [CSS Gradient Generator](#).

Hey! You found this booklet interesting? Support Converting Colors with the new Membership Option!

The pro membership hides all ads, plus gives you double the colors in the color bucket, and more awesome pro features!

[Learn more, Memberships starting at \\$2.50/m!](#)

**Follow me
on Twitter!**

@ConvertingColor