

Converting Colors

XYZ(44.7051, 45.4252, 40.3233)

Have a look what the booklet for
XYZ(44.7051, 45.4252, 40.3233)
contains.

XYZ(44.7233, 45.3596, 40.1163)	3
<i>Conversions</i>	4
<i>Details</i>	6
<i>Harmonies</i>	12
<i>Previews</i>	24
<i>Color Blindness Simulation</i>	28
<i>CSS Examples</i>	31

Color

**XYZ(44.7233, 45.3596,
40.1163)**

Conversions

Conversions Part 1

Format	Color
Hex	C4B0A1
RGB	196, 176, 161
RGB Percent	77%, 69%, 63%
CMY	0.2314, 0.3098, 0.3686
CMYK	0.00, 0.10, 0.18, 0.23
HSL	26°, 23%, 70%
HSV	26°, 18%, 77%
XYZ	44.7233, 45.3596, 40.1163
YIQ	180.2700, 16.7350, -0.4250

Conversions

Conversions Part 2

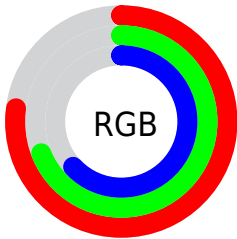
Format	Color
RYB	196, 187, 161
Decimal	12890273
CIELab	73.13, 4.72, 10.29
CIELCh	73, 11.324, 65.338
Yxy	45.3596, 0.3435, 0.3484
Android (android.graphics.Color)	4291080353 (0xFFC4B0A1)
YUV	180.2700, -9.5001, 13.7952
Hunter-Lab	67.3495, 0.6708, 11.8290

Details

The XYZ color **44.7233, 45.3596, 40.1163** is a light color, and the websafe version is hex **CCCCCC**. A complement of this color would be **41.1854, 44.6094, 58.6647**, and the grayscale version is **43.5716, 45.8407, 49.9205**.

A 20% lighter version of the original color is **81.7593, 83.5537, 76.7841**, and **21.1233, 21.2702, 17.4602** is the 20% darker color. If you saturate the color by 10%, you get **41.0231, 40.5115, 31.0135**, and if you desaturate by 10%, it is **48.8781, 50.6824, 50.7085**.

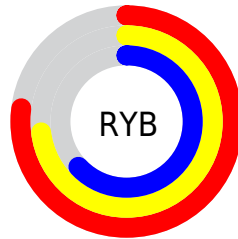
Distribution



Red (77%)

Green (69%)

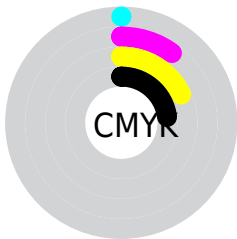
Blue (63%)



Red (77%)

Yellow (73%)

Blue (63%)

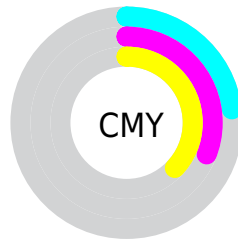


Cyan (0%)

Magenta (10%)

Yellow (18%)

Black (23%)



Cyan (23%)


Magenta (31%)


Yellow (37%)

Brightness & Saturation Gradients


These gradients show how the XYZ color 44.7233, 45.3596, 40.1163 changes by changing the brightness by 10 percent. The first figure shows a shift by +10% for each color and the second figure -10%.


Similar to the brightness gradients but the following saturation gradients show a change of the XYZ color 44.7233, 45.3596, 40.1163 by changing the saturation by 10% instead.

 44.7233, 45.3596,
40.1163


 44.7233, 45.3596,
40.1163


356.4543,
368.2280, 362.1802

 31.4399, 31.7408,
27.3148


 81.5447, 83.2598,
76.5796

 21.0875, 21.1636,
17.5752


 105.8133,
108.3099, 101.0784

 13.3008, 13.2436,
10.4792

134.4744,
137.9392, 130.3135

 7.7144, 7.5965,
5.6081

167.8934,
172.5322, 164.7032

 3.9630, 3.8379,
2.5434

206.4355,
212.4731, 204.6662

 1.6812, 1.5833,
0.8630

250.4661,

 0.4445, 0.3463,

258.1465, 250.6210

0.0000

300.3506,
309.9367, 302.9861

■ 0.0000, 0.0000,
0.0000

■ 44.7233, 45.3596,
40.1163

■ 44.7233, 45.3596,
40.1163

■ 41.0231, 40.5115,
31.0135

■ 48.8781, 50.6824,
50.7085

■ 37.7568, 36.1183,
23.3294

■ 53.4998, 56.4870,
62.8504

■ 34.9076, 32.1676,
16.9919

■ 58.6047, 62.7879,
76.6029

■ 32.4560, 28.6441,
11.9213

■ 64.2073, 69.5972,
92.0223

■ 30.3806, 25.5313,
8.0296

■ 69.6702, 76.6660,
105.7338

■ 28.6577, 22.8115,
5.2169

■ 72.9234, 83.1723,
106.8181

■ 27.2600, 20.4652,
3.3667

■ 76.3810, 90.0876,
107.9707

■ 26.1496, 18.4681,
2.3071

■ 76.5751, 90.4759,
108.0354

■ 25.9371, 18.0798,
2.1227

Harmonies

Analogous

The Analogous color harmony consists of three colors that are next to each other on the color wheel.



46.2982, 45.3596, 43.3392



44.7233, 45.3596, 40.1163



42.7592, 45.3596, 39.2962

Triad

The Triadic color harmony groups three colors that are evenly spaced from another and form a triangle on the color wheel.



44.7233, 45.3596, 40.1163



39.4275, 45.3596, 50.4116



45.3558, 45.3596, 58.8415

Complementary

The Complementary color scheme is a pair of colors which are on the opposite of each other on the color wheel.



44.7233, 45.3596, 40.1163



41.1854, 44.6094, 58.6647

Split Complementary

Split-complementary colors differ from the complementary color scheme. The scheme consists of three colors, the original color and two neighbors of the complement color.



43.4686, 45.3596, 61.0767



44.7233, 45.3596, 40.1163



40.0772, 45.3596, 55.9769

Square

The Square scheme is like the rectangle color scheme, but the four colors are evenly spaced on the color wheel.



44.7233, 45.3596, 40.1163



39.7404, 45.3596, 44.9718



41.5417, 45.3596, 59.9904



46.6711, 45.3596, 54.0861

Rectangle

The Rectangle color scheme consists of four colors that form a rectangle on the color wheel.



44.7233, 45.3596, 40.1163



41.5019, 45.3596, 40.1637



41.5417, 45.3596, 59.9904



44.7651, 45.3596, 59.9284

Sweetspot

The Sweet Spot groups the original color and five complimentary colors.



44.7245, 45.3616, 40.1173



90.7846, 94.6459, 97.6850



43.8936, 40.5794, 49.4602



19.3071, 20.1010, 20.5839



0.0000, 0.0000, 0.0000



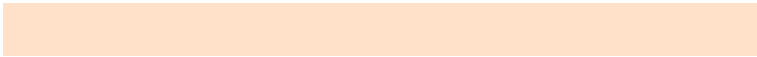
20.3446, 21.4041, 23.3091

Same Dimension

The Same Dimension uses a secret algorithm to generate beautiful new colors.



44.7245, 45.3616, 40.1173



78.6005, 79.0279, 66.6475



48.2868, 52.4862, 41.3047



10.4203, 10.7720, 10.5919



16.7474, 11.7806, 1.3912



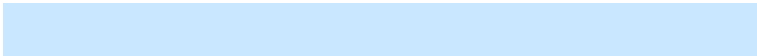
0.7919, 0.6456, 0.0829

Inverse Universe

The Inverse Universe completely reimagines the original color for something new.



41.1854, 44.6094, 58.6647



71.1277, 77.4382, 105.8060



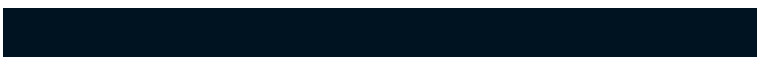
37.9229, 38.0843, 57.5772



9.9952, 10.6818, 12.8198



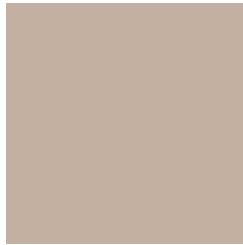
10.2106, 10.1776, 34.9829



0.5085, 0.5743, 1.5339

Previews

White Background



This preview shows how the XYZ color 44.7233, 45.3596, 40.1163 looks on a white background.

Color Contrast Check

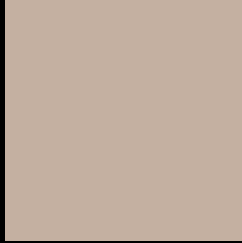
Large Text (above 18pt) WCAG AA × Fail

Any Text WCAG AA × Fail

Large Text (above 18pt) WCAG AAA × Fail

Any Text WCAG AAA × Fail

Black Background



This preview shows how the XYZ color 44.7233, 45.3596, 40.1163 looks on a black background.

Color Contrast Check

Large Text (above 18pt) WCAG AA ✓ Pass

Any Text WCAG AA ✓ Pass

Large Text (above 18pt) WCAG AAA ✓ Pass

Any Text WCAG AAA ✓ Pass

If you want to check with other color combinations, try the [Color Contrast Checker](#).

XYZ 44.7233, 45.3596, 40.1163

Background



This preview shows how black text looks on a background with the XYZ color 44.7233, 45.3596, 40.1163.



This preview shows how white text looks on a background with the XYZ color 44.7233, 45.3596,

Color Blindness Simulation

Color vision deficiency is a very complex topic, and I could not describe the different causes any better than Wikipedia does, so if you want to learn more, you should check out their [article about color blindness](#).

Dichromacy



Original Color

44.7233, 45.3596, 40.1163

Protanopia

43.2245, 45.4493, 41.1448

Deuteranopia

46.3670, 45.3331, 40.4888



Tritanopia

47.1686, 45.1923, 52.6913

Trichromacy



Original Color

44.7233, 45.3596, 40.1163

Protanomaly

43.6772, 45.3966, 40.6428

Deuteranomaly

45.7450, 45.2982, 40.5148

Tritanomaly

46.1681, 45.0672, 47.8605

Monochromacy



Original Color

44.7233, 45.3596, 40.1163

Achromatopsia

43.3819, 45.6411, 49.7032

Achromatomaly

43.9126, 45.6964, 46.0410

CSS Examples

Text

The CSS property to change the color of the text to XYZ 44.7233, 45.3596, 40.1163 is called "color". The color property can be set on classes, ids or directly on the HTML element.

This example shows how text in the color `rgb(196, 176, 161)` looks like.

```
.text, #text, p{  
    color:rgb(196, 176, 161)  
}
```

If you want to add a text shadow in that color use the text-shadow property, you can generate a text shadow directly with our [CSS Text Shadow Generator](#).

Here you see how black text with a 4 pixel rgb(196, 176, 161) colored shadow looks like.

```
.shadow{ text-shadow: 4px 4px 2px rgb(196, 176, 161) }
```

Border

The CSS property to change the border of an element to XYZ 44.7233, 45.3596, 40.1163 is called "border". The border property can be set on classes, ids or directly on the HTML element.

This example shows the color as border, it can be applied via the CSS property "border" or "border-color".

```
.border, #border, table{ border:4px solid rgb(196, 176, 161) }
```


If only the border color should be changed use the property `border-color`.

```
.border{ border-color:rgb(196, 176, 161) }
```

If you want to add a box shadow in that color use:

Here you see how a box with a 4 pixel `rgb(196, 176, 161)` colored shadow looks like.

```
.boxshadow{ -moz-box-shadow:4px 4px 4px  
4px rgb(196, 176, 161); -webkit-box-  
shadow:4px 4px 4px 4px rgb(196, 176, 161);  
box-shadow:4px 4px 4px 4px rgb(196, 176,  
161) }
```

Background

The CSS property to change the background color of an element to XYZ 44.7233, 45.3596, 40.1163 is called "background". The background property can be set on classes, ids or directly on the HTML element.

```
.background, #background, body{  
background: rgb(196, 176, 161) }
```

If only the background color should be changed can be used:

```
.background{ background-color: rgb(196,  
176, 161) }
```

This example shows the color as background, it is applied via the CSS property "background".

To optimize and compress your CSS code, you can use our [online CSS compressor and optimizer](#) based on csstidy. If you want to create a linear or radial gradient as background or border, check our [CSS Gradient Generator](#).

Hey! You found this booklet interesting? Support Converting Colors with the new Membership Option!

The pro membership hides all ads, plus gives you double the colors in the color bucket, and more awesome pro features!

[Learn more, Memberships starting at \\$2.50/m!](#)

**Follow me
on Twitter!**

@ConvertingColor