

Converting Colors

XYZ(44.7155, 43.8856, 40.7744)

Have a look what the booklet for
XYZ(44.7155, 43.8856, 40.7744)
contains.

XYZ(44.7270, 43.9123, 40.7689)	3
<i>Conversions</i>	4
<i>Details</i>	6
<i>Harmonies</i>	12
<i>Previews</i>	24
<i>Color Blindness Simulation</i>	28
<i>CSS Examples</i>	31

Color

**XYZ(44.7270, 43.9123,
40.7689)**

Conversions

Conversions Part 1

Format	Color
Hex	C7ABA3
RGB	199, 171, 163
RGB Percent	78%, 67%, 64%
CMY	0.2196, 0.3294, 0.3608
CMYK	0.00, 0.14, 0.18, 0.22
HSL	13°, 24%, 71%
HSV	13°, 18%, 78%
XYZ	44.7270, 43.9123, 40.7689
YIQ	178.4600, 19.2560, 3.4480

Conversions

Conversions Part 2

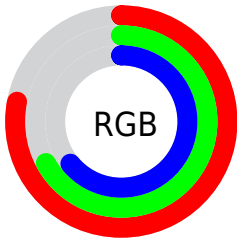
Format	Color
RYB	199, 173, 163
Decimal	13085603
CIELab	72.17, 8.87, 7.87
CIELCh	72, 11.852, 41.578
Yxy	43.9123, 0.3456, 0.3393
Android (android.graphics.Color)	4291275683 (0xFFC7ABA3)
YUV	178.4600, -7.6218, 18.0136
Hunter-Lab	66.2664, 4.5139, 9.9096

Details

The XYZ color **44.7270, 43.9123, 40.7689** is a light color, and the websafe version is hex **CC9999**. A complement of this color would be **44.0436, 49.1706, 61.2028**, and the grayscale version is **42.5936, 44.8118, 48.8001**.

A 20% lighter version of the original color is **81.0912, 80.7147, 77.6352**, and **21.1431, 20.3611, 17.8546** is the 20% darker color. If you saturate the color by 10%, you get **40.3286, 37.7477, 31.1873**, and if you desaturate by 10%, it is **49.7507, 50.8777, 51.9442**.

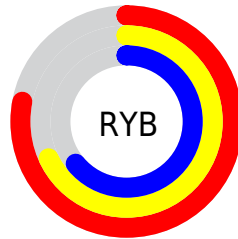
Distribution



Red (78%)

Green (67%)

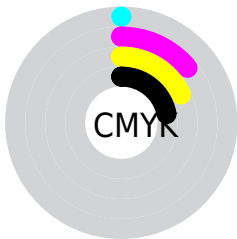
Blue (64%)



Red (78%)

Yellow (68%)

Blue (64%)

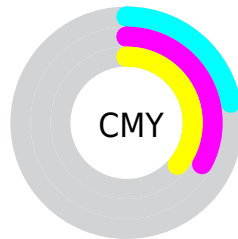


Cyan (0%)

Magenta (14%)

Yellow (18%)

Black (22%)



Cyan (22%)


Magenta (33%)


Yellow (36%)

Brightness & Saturation Gradients


These gradients show how the XYZ color 44.7270, 43.9123, 40.7689 changes by changing the brightness by 10 percent. The first figure shows a shift by +10% for each color and the second figure -10%.


Similar to the brightness gradients but the following saturation gradients show a change of the XYZ color 44.7270, 43.9123, 40.7689 by changing the saturation by 10% instead.


 44.7270, 43.9123,
40.7689


 44.7270, 43.9123,
40.7689


356.4691,
362.3503, 365.0018

 31.4428, 30.6016,
27.8202


 81.5502, 81.0858,
77.5828

 21.0897, 20.2956,
17.9523


 105.8199,
105.7173, 102.2851

 13.3025, 12.6101,
10.7467


134.4821,
134.8912, 131.7424

 7.7156, 7.1606,
5.7847

167.9023,
168.9919, 166.3731

 3.9638, 3.5628,
2.6480

206.4457,
208.4037, 206.5959

 1.6817, 1.4321,
0.9171

250.4778,

 0.4447, 0.2402,

253.5111, 252.8292

0.0000

300.3638,
304.6985, 305.4917

■ 0.0000, 0.0000,
0.0000

■ 44.7270, 43.9123,
40.7689

■ 44.7270, 43.9123,
40.7689

■ 40.3286, 37.7477,
31.1873

■ 49.7507, 50.8777,
51.9442

■ 36.5270, 32.3491,
23.1238

■ 55.4195, 58.6652,
64.7785

■ 33.2970, 27.6880,
16.5007

■ 61.7569, 67.3027,
79.3370

■ 30.6098, 23.7320,
11.2324

■ 68.7838, 76.8150,
95.6804

■ 28.4342, 20.4458,
7.2241

■ 75.2889, 86.7333,
107.3808

■ 26.7356, 17.7912,
4.3687

■ 77.3634, 90.8822,
108.0723

■ 25.4747, 15.7260,
2.5407

■ 24.5987, 14.1995,
1.5534

■ 24.4631, 13.9617,
1.4055

Harmonies

Analogous

The Analogous color harmony consists of three colors that are next to each other on the color wheel.



45.6807, 43.9123, 45.6035



44.7270, 43.9123, 40.7689



42.9835, 43.9123, 37.9685

Triad

The Triadic color harmony groups three colors that are evenly spaced from another and form a triangle on the color wheel.



44.7270, 43.9123, 40.7689



38.1412, 43.9123, 44.3654



42.5259, 43.9123, 59.6266

Complementary

The Complementary color scheme is a pair of colors which are on the opposite of each other on the color wheel.



44.7270, 43.9123, 40.7689



44.0436, 49.1706, 61.2028

Split Complementary

Split-complementary colors differ from the complementary color scheme. The scheme consists of three colors, the original color and two neighbors of the complement color.



40.5155, 43.9123, 59.2272



44.7270, 43.9123, 40.7689



38.0277, 43.9123, 50.0928

Square

The Square scheme is like the rectangle color scheme, but the four colors are evenly spaced on the color wheel.



44.7270, 43.9123, 40.7689



39.1992, 43.9123, 39.9259



38.8839, 43.9123, 55.6251



44.3827, 43.9123, 56.6759

Rectangle

The Rectangle color scheme consists of four colors that form a rectangle on the color wheel.



44.7270, 43.9123, 40.7689



41.6299, 43.9123, 37.4828



38.8839, 43.9123, 55.6251



41.8449, 43.9123, 59.8857

Sweetspot

The Sweet Spot groups the original color and five complimentary colors.



44.7282, 43.9143, 40.7698



89.9826, 93.0419, 97.4177



46.0769, 42.1075, 55.1052



19.1126, 19.7119, 20.5190



0.0000, 0.0000, 0.0000



20.3446, 21.4041, 23.3091

Same Dimension

The Same Dimension uses a secret algorithm to generate beautiful new colors.



44.7282, 43.9143, 40.7698



74.9241, 72.1527, 63.9499



48.3192, 51.0962, 41.9668



10.8219, 11.0130, 11.1181



15.7847, 9.0866, 0.9219



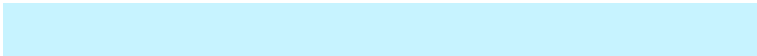
0.8033, 0.5420, 0.0623

Inverse Universe

The Inverse Universe completely reimagines the original color for something new.



44.0436, 49.1706, 61.2028



73.4860, 83.1672, 106.7875



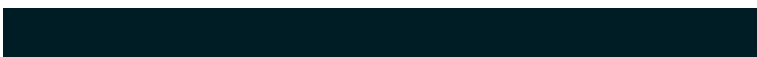
40.3956, 41.8746, 59.9868



10.7390, 11.6520, 13.6006



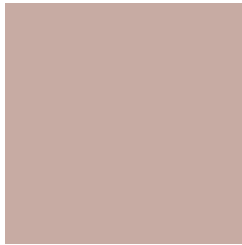
14.2074, 17.8087, 37.4330



0.7235, 0.9449, 1.7894

Previews

White Background



This preview shows how the XYZ color 44.7270, 43.9123, 40.7689 looks on a white background.

Color Contrast Check

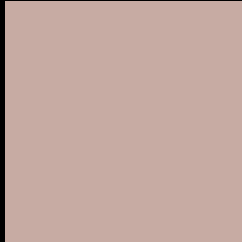
Large Text (above 18pt) WCAG AA × Fail

Any Text WCAG AA × Fail

Large Text (above 18pt) WCAG AAA × Fail

Any Text WCAG AAA × Fail

Black Background



This preview shows how the XYZ color 44.7270, 43.9123, 40.7689 looks on a black background.

Color Contrast Check

Large Text (above 18pt) WCAG AA ✓ Pass

Any Text WCAG AA ✓ Pass

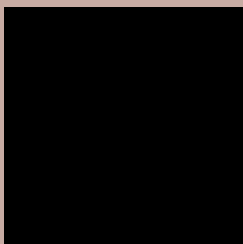
Large Text (above 18pt) WCAG AAA ✓ Pass

Any Text WCAG AAA ✓ Pass

If you want to check with other color combinations, try the [Color Contrast Checker](#).

XYZ 44.7270, 43.9123, 40.7689

Background



This preview shows how black text looks on a background with the XYZ color 44.7270, 43.9123, 40.7689.



This preview shows how white text looks on a background with the XYZ color 44.7270, 43.9123,

Color Blindness Simulation

Color vision deficiency is a very complex topic, and I could not describe the different causes any better than Wikipedia does, so if you want to learn more, you should check out their [article about color blindness](#).

Dichromacy



Original Color

44.7270, 43.9123, 40.7689

Protanopia

41.9367, 43.8711, 42.3341

Deuteranopia

44.7270, 43.9123, 40.7689



Tritanopia

46.4305, 43.7590, 49.7152

Trichromacy



Original Color

44.7270, 43.9123, 40.7689

Protanomaly

42.9138, 43.8075, 41.7912

Deuteranomaly

44.7270, 43.9123, 40.7689

Tritanomaly

45.6474, 43.7113, 46.0756

Monochromacy



Original Color

44.7270, 43.9123, 40.7689

Achromatopsia

42.3164, 44.5201, 48.4824

Achromatomaly

43.1225, 44.1162, 45.7776

CSS Examples

Text

The CSS property to change the color of the text to XYZ 44.7270, 43.9123, 40.7689 is called "color". The color property can be set on classes, ids or directly on the HTML element.

This example shows how text in the color `rgb(199, 171, 163)` looks like.

```
.text, #text, p{  
    color:rgb(199, 171, 163)  
}
```

If you want to add a text shadow in that color use the text-shadow property, you can generate a text shadow directly with our [CSS Text Shadow Generator](#).

Here you see how black text with a 4 pixel rgb(199, 171, 163) colored shadow looks like.

```
.shadow{ text-shadow: 4px 4px 2px rgb(199, 171, 163) }
```

Border

The CSS property to change the border of an element to XYZ 44.7270, 43.9123, 40.7689 is called "border". The border property can be set on classes, ids or directly on the HTML element.

This example shows the color as border, it can be applied via the CSS property "border" or "border-color".

```
.border, #border, table{ border:4px solid rgb(199, 171, 163) }
```


If only the border color should be changed use the property `border-color`.

```
.border{ border-color:rgb(199, 171, 163) }
```

If you want to add a box shadow in that color use:

Here you see how a box with a 4 pixel `rgb(199, 171, 163)` colored shadow looks like.

```
.boxshadow{ -moz-box-shadow:4px 4px 4px  
4px rgb(199, 171, 163); -webkit-box-  
shadow:4px 4px 4px 4px rgb(199, 171, 163);  
box-shadow:4px 4px 4px 4px rgb(199, 171,  
163) }
```

Background

The CSS property to change the background color of an element to XYZ 44.7270, 43.9123, 40.7689 is called "background". The background property can be set on classes, ids or directly on the HTML element.

```
.background, #background, body{  
background: rgb(199, 171, 163) }
```

If only the background color should be changed can be used:

```
.background{ background-color: rgb(199,  
171, 163) }
```

This example shows the color as background, it is applied via the CSS property "background".

To optimize and compress your CSS code, you can use our [online CSS compressor and optimizer](#) based on csstidy. If you want to create a linear or radial gradient as background or border, check our [CSS Gradient Generator](#).

Hey! You found this booklet interesting? Support Converting Colors with the new Membership Option!

The pro membership hides all ads, plus gives you double the colors in the color bucket, and more awesome pro features!

[Learn more, Memberships starting at \\$2.50/m!](#)

**Follow me
on Twitter!**

@ConvertingColor