

Converting Colors

XYZ(44.7750, 24.1046, 16.1345)

Have a look what the booklet for
XYZ(44.7750, 24.1046, 16.1345)
contains.

XYZ(44.7945, 24.1229, 16.2052)	3
<i>Conversions</i>	4
<i>Details</i>	6
<i>Harmonies</i>	12
<i>Previews</i>	24
<i>Color Blindness Simulation</i>	28
<i>CSS Examples</i>	31

Color

**XYZ(44.7945, 24.1229,
16.2052)**

Conversions

Conversions Part 1

Format	Color
Hex	FF2C6B
RGB	255, 44, 107
RGB Percent	100%, 17%, 42%
CMY	0.0000, 0.8274, 0.5804
CMYK	0.00, 0.83, 0.58, 0.00
HSL	342°, 100%, 59%
HSV	342°, 83%, 100%
XYZ	44.7945, 24.1229, 16.2052
YIQ	114.2710, 105.5330, 64.3250

Conversions

Conversions Part 2

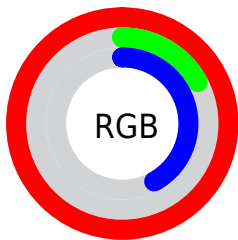
Format	Color
R_{YB}	255, 44, 107
Decimal	16723051
CIE _{Lab}	56.21, 77.85, 18.51
CIE _{LCh}	56, 80.022, 13.376
Yxy	24.1229, 0.5262, 0.2834
Android (android.graphics.Color)	4294913131 (0xFFFF2C6B)
YUV	114.2710, -3.5846, 123.4193
Hunter-Lab	49.1151, 76.8463, 14.8182

Details

The XYZ color **44.7945, 24.1229, 16.2052** is a dark color, and the websafe version is hex **FF3366**. The color can be described as dark washed rose. A complement of this color would be **46.3160, 75.8622, 62.0824**, and the grayscale version is **16.0667, 16.9034, 18.4078**.

A 20% lighter version of the original color is **53.4289, 35.7632, 36.4347**, and **22.3015, 11.4026, 5.3005** is the 20% darker color. If you saturate the color by 10%, you get **43.2725, 22.4327, 11.5252**, and if you desaturate by 10%, it is **47.0946, 27.0583, 22.1053**.

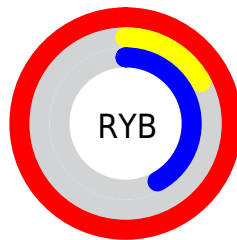
Distribution



Red (100%)

Green (17%)

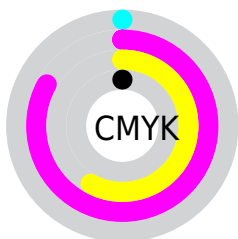
Blue (42%)



Red (100%)

Yellow (17%)

Blue (42%)

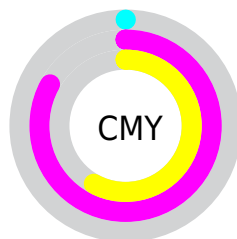


Cyan (0%)

Magenta (83%)

Yellow (58%)

Black (0%)



Cyan (0%)

Magenta (83%)

Yellow (58%)

Brightness & Saturation Gradients

These gradients show how the XYZ color 44.7945, 24.1229, 16.2052 changes by changing the brightness by 10 percent. The first figure shows a shift by +10% for each color and the second figure -10%.

Similar to the brightness gradients but the following saturation gradients show a change of the XYZ color 44.7945, 24.1229, 16.2052 by changing the saturation by 10% instead.

■ 44.7945, 24.1229,
16.2052

■ 44.7945, 24.1229,
16.2052

356.7384,
273.4412, 242.4364

■ 31.4962, 15.4248,
9.5135

■ 81.6509, 50.2307,
37.7258

■ 21.1306, 9.1181,
4.9763

■ 105.9397, 68.4092,
53.3919

■ 13.3325, 4.8183,
2.1749

■ 134.6227, 90.5166,
72.8864

■ 7.7365, 2.1410,
0.6598

■ 168.0653,
116.9373, 96.6281

■ 3.9772, 0.6876,
0.0000

■ 206.6328,
148.0557, 125.0354

■ 1.6892, 0.0000,
0.0000

250.6906,

■ 0.4495, 0.0000,

184.2563, 158.5269

0.0000

300.6040,
225.9233, 197.5210

■ 0.0000, 0.0000,
0.0000

■ 44.7945, 24.1229,
16.2052

■ 44.7945, 24.1229,
16.2052

■ 43.2725, 22.4327,
11.5252

■ 47.0946, 27.0583,
22.1053

■ 42.5485, 21.7834,
8.8215

■ 50.2748, 31.4244,
29.3136

■ 54.4225, 37.3798,
37.9098

■ 59.6133, 45.0606,
47.9663

■ 65.9152, 54.5883,
59.5500

73.3902, 66.0735,
72.7235

82.0956, 79.6178,
87.5456

92.0850, 95.3158,
104.0721

95.0498, 99.9999,
108.9000

Harmonies

Analogous

The Analogous color harmony consists of three colors that are next to each other on the color wheel.



44.3902, 24.1229, 43.5829



44.7945, 24.1229, 16.2052



38.3338, 24.1229, 4.5777

Triad

The Triadic color harmony groups three colors that are evenly spaced from another and form a triangle on the color wheel.



44.7945, 24.1229, 16.2052



12.8012, 24.1229, 3.9730



18.2318, 24.1229, 110.8184

Complementary

The Complementary color scheme is a pair of colors which are on the opposite of each other on the color wheel.



44.7945, 24.1229, 16.2052



46.3160, 75.8622, 62.0824

Split Complementary

Split-complementary colors differ from the complementary color scheme. The scheme consists of three colors, the original color and two neighbors of the complement color.



12.3266, 24.1229, 78.6614



44.7945, 24.1229, 16.2052



9.8147, 24.1229, 14.2773

Square

The Square scheme is like the rectangle color scheme, but the four colors are evenly spaced on the color wheel.



44.7945, 24.1229, 16.2052



19.0756, 24.1229, 1.3817



9.6681, 24.1229, 39.8104



27.2672, 24.1229, 112.7699

Rectangle

The Rectangle color scheme consists of four colors that form a rectangle on the color wheel.



44.7945, 24.1229, 16.2052



31.8011, 24.1229, 2.0222



9.6681, 24.1229, 39.8104



15.8812, 24.1229, 102.5389

Sweetspot

The Sweet Spot groups the original color and five complimentary colors.



44.7951, 24.1243, 16.2056



71.5932, 63.2979, 69.6003



40.6152, 20.1910, 96.3638



14.7530, 12.6700, 13.8948



0.0000, 0.0000, 0.0000



20.3446, 21.4041, 23.3091

Same Dimension

The Same Dimension uses a secret algorithm to generate beautiful new colors.



44.7951, 24.1243, 16.2056



42.6396, 21.8641, 9.1635



45.0399, 28.1321, 5.4411



18.2325, 18.0763, 19.8414



22.2896, 11.4051, 4.9094



2.2159, 1.1287, 0.7185

Inverse Universe

The Inverse Universe completely reimagines the original color for something new.



44.7951, 24.1243, 16.2056



42.6396, 21.8641, 9.1635



42.8344, 55.2457, 103.0131



18.2325, 18.0763, 19.8414



22.2896, 11.4051, 4.9094



2.2159, 1.1287, 0.7185

Previews

White Background



This preview shows how the XYZ color 44.7945, 24.1229, 16.2052 looks on a white background.

Color Contrast Check

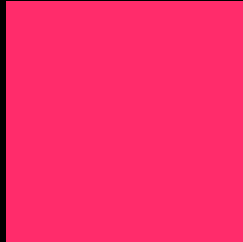
Large Text (above 18pt) WCAG AA ✓ Pass

Any Text WCAG AA × Fail

Large Text (above 18pt) WCAG AAA × Fail

Any Text WCAG AAA × Fail

Black Background



This preview shows how the XYZ color 44.7945, 24.1229, 16.2052 looks on a black background.

Color Contrast Check

Large Text (above 18pt) WCAG AA ✓ Pass

Any Text WCAG AA ✓ Pass

Large Text (above 18pt) WCAG AAA ✓ Pass

Any Text WCAG AAA × Fail

If you want to check with other color combinations, try the [Color Contrast Checker](#).

XYZ 44.7945, 24.1229, 16.2052

Background



This preview shows how black text looks on a background with the XYZ color 44.7945, 24.1229, 16.2052.



This preview shows how white text looks on a background with the XYZ color 44.7945, 24.1229,

Color Blindness Simulation

Color vision deficiency is a very complex topic, and I could not describe the different causes any better than Wikipedia does, so if you want to learn more, you should check out their [article about color blindness](#).

Dichromacy



Original Color

44.7945, 24.1229, 16.2052

Protanopia

23.6228, 24.2067, 31.8611

Deuteranopia

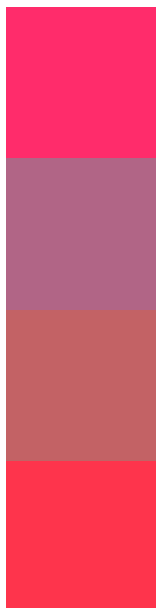
24.5051, 24.0372, 14.6573



Tritanopia

42.7349, 24.1144, 6.4052

Trichromacy



Original Color

44.7945, 24.1229, 16.2052

Protanomaly

27.0882, 20.3757, 25.0595

Deuteranomaly

29.2223, 21.2771, 14.8786

Tritanomaly

43.4055, 24.0486, 9.1916

Monochromacy



Original Color

44.7945, 24.1229, 16.2052

Achromatopsia

15.9940, 16.8269, 18.3245

Achromatomaly

21.9587, 16.2918, 17.0262

CSS Examples

Text

The CSS property to change the color of the text to XYZ 44.7945, 24.1229, 16.2052 is called "color". The color property can be set on classes, ids or directly on the HTML element.

This example shows how text in the color `rgb(255, 44, 107)` looks like.

```
.text, #text, p{  
    color:rgb(255, 44, 107)  
}
```

If you want to add a text shadow in that color use the text-shadow property, you can generate a text shadow directly with our [CSS Text Shadow Generator](#).

Here you see how black text with a 4 pixel rgb(255, 44, 107) colored shadow looks like.

```
.shadow{ text-shadow: 4px 4px 2px rgb(255, 44, 107) }
```

Border

The CSS property to change the border of an element to XYZ 44.7945, 24.1229, 16.2052 is called "border". The border property can be set on classes, ids or directly on the HTML element.

This example shows the color as border, it can be applied via the CSS property "border" or "border-color".

```
.border, #border, table{ border:4px solid rgb(255, 44, 107) }
```


If only the border color should be changed use the property `border-color`.

```
.border{ border-color:rgb(255, 44, 107) }
```

If you want to add a box shadow in that color use:

Here you see how a box with a 4 pixel `rgb(255, 44, 107)` colored shadow looks like.

```
.boxshadow{ -moz-box-shadow:4px 4px 4px  
4px rgb(255, 44, 107); -webkit-box-  
shadow:4px 4px 4px 4px rgb(255, 44, 107);  
box-shadow:4px 4px 4px 4px rgb(255, 44,  
107) }
```

Background

The CSS property to change the background color of an element to XYZ 44.7945, 24.1229, 16.2052 is called "background". The background property can be set on classes, ids or directly on the HTML element.

```
.background, #background, body{  
background: rgb(255, 44, 107) }
```

If only the background color should be changed can be used:

```
.background{ background-color: rgb(255, 44,  
107) }
```

This example shows the color as background, it is applied via the CSS property "background".

To optimize and compress your CSS code, you can use our [online CSS compressor and optimizer](#) based on csstidy. If you want to create a linear or radial gradient as background or border, check our [CSS Gradient Generator](#).

Hey! You found this booklet interesting? Support Converting Colors with the new Membership Option!

The pro membership hides all ads, plus gives you double the colors in the color bucket, and more awesome pro features!

[Learn more, Memberships starting at \\$2.50/m!](#)

**Follow me
on Twitter!**

@ConvertingColor