

Converting Colors

XYZ(44.7807, 40.4318, 32.2323)

Have a look what the booklet for
XYZ(44.7807, 40.4318, 32.2323)
contains.

XYZ(44.8994, 40.4544, 32.2301)	3
<i>Conversions</i>	4
<i>Details</i>	6
<i>Harmonies</i>	12
<i>Previews</i>	24
<i>Color Blindness Simulation</i>	28
<i>CSS Examples</i>	31

Color

**XYZ(44.8994, 40.4544,
32.2301)**

Conversions

Conversions Part 1

Format	Color
Hex	D69D91
RGB	214, 157, 145
RGB Percent	84%, 62%, 57%
CMY	0.1608, 0.3843, 0.4314
CMYK	0.00, 0.27, 0.32, 0.16
HSL	10°, 46%, 70%
HSV	10°, 32%, 84%
XYZ	44.8994, 40.4544, 32.2301
YIQ	172.6750, 37.8240, 8.3520

Conversions

Conversions Part 2

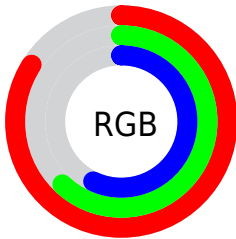
Format	Color
R_{YB}	214, 160, 145
Decimal	14065041
CIE _{Lab}	69.79, 19.61, 14.63
CIE _{LCh}	70, 24.468, 36.714
Yxy	40.4544, 0.3818, 0.3440
Android (android.graphics.Color)	4292255121 (0xFFD69D91)
YUV	172.6750, -13.6438, 36.2420
Hunter-Lab	63.6038, 14.7007, 14.4785

Details

The XYZ color **44.8994, 40.4544, 32.2301** is a light color, and the websafe version is hex **CC9999**. A complement of this color would be **44.9346, 53.1142, 71.5023**, and the grayscale version is **39.6097, 41.6724, 45.3813**.

A 20% lighter version of the original color is **75.0923, 72.4705, 64.0632**, and **21.2177, 18.1985, 13.2208** is the 20% darker color. If you saturate the color by 10%, you get **40.6248, 34.3018, 23.4166**, and if you desaturate by 10%, it is **49.9197, 47.6005, 42.8265**.

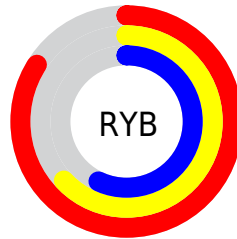
Distribution



Red (84%)

Green (62%)

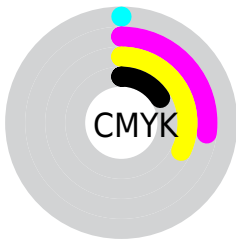
Blue (57%)



Red (84%)

Yellow (63%)

Blue (57%)

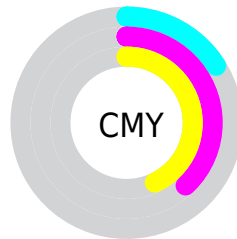


Cyan (0%)

Magenta (27%)

Yellow (32%)

Black (16%)



Cyan (16%)


Magenta (38%)


Yellow (43%)

Brightness & Saturation Gradients


These gradients show how the XYZ color 44.8994, 40.4544, 32.2301 changes by changing the brightness by 10 percent. The first figure shows a shift by +10% for each color and the second figure -10%.


Similar to the brightness gradients but the following saturation gradients show a change of the XYZ color 44.8994, 40.4544, 32.2301 by changing the saturation by 10% instead.


 44.8994, 40.4544,
32.2301


 44.8994, 40.4544,
32.2301


357.1565,
348.0351, 326.6911

 31.5791, 27.8930,
21.2710


 81.8074, 75.8550,
64.2737

 21.1942, 18.2450,
13.1291


 106.1259, 99.4629,
86.1954

 13.3793, 11.1260,
7.3857


134.8411,
127.5219, 112.6083

 7.7691, 6.1517,
3.6224

168.3185,
160.4162, 143.9311

 3.9981, 2.9375,
1.4206

206.9234,
198.5303, 180.5822

 1.7011, 1.0992,
0.1577

251.0211,

 0.4569, 0.0000,

242.2485, 222.9802

0.0000

300.9770,
291.9553, 271.5436

■ 0.0000, 0.0000,
0.0000

■ 44.8994, 40.4544,
32.2301

■ 44.8994, 40.4544,
32.2301

■ 40.6248, 34.3018,
23.4166

■ 49.9197, 47.6005,
42.8265

■ 37.0567, 29.0931,
16.2852

■ 55.7160, 55.7757,
55.2940

■ 34.1572, 24.7828,
10.7288

■ 62.3208, 65.0207,
69.7180

■ 31.8831, 21.3193,
6.6270

■ 69.7638, 75.3724,
86.1779

■ 30.1864, 18.6458,
3.8418

■ 78.0732, 86.8657,
104.7485

■ 29.0111, 16.6981,
2.2081

■ 81.5417, 93.0362,
108.2678

■ 28.4004, 15.6337,
1.5207

Harmonies

Analogous

The Analogous color harmony consists of three colors that are next to each other on the color wheel.



46.5398, 40.4544, 41.5417



44.8994, 40.4544, 32.2301



41.5476, 40.4544, 26.8660

Triad

The Triadic color harmony groups three colors that are evenly spaced from another and form a triangle on the color wheel.



44.8994, 40.4544, 32.2301



31.8574, 40.4544, 35.9593



39.3499, 40.4544, 69.5185

Complementary

The Complementary color scheme is a pair of colors which are on the opposite of each other on the color wheel.



44.8994, 40.4544, 32.2301



44.9346, 53.1142, 71.5023

Split Complementary

Split-complementary colors differ from the complementary color scheme. The scheme consists of three colors, the original color and two neighbors of the complement color.



35.5116, 40.4544, 67.3313



44.8994, 40.4544, 32.2301



31.3578, 40.4544, 46.6531

Square

The Square scheme is like the rectangle color scheme, but the four colors are evenly spaced on the color wheel.



44.8994, 40.4544, 32.2301



34.0660, 40.4544, 28.7461



32.6510, 40.4544, 58.4503



43.1963, 40.4544, 63.9970

Rectangle

The Rectangle color scheme consists of four colors that form a rectangle on the color wheel.



44.8994, 40.4544, 32.2301



38.8899, 40.4544, 25.6307



32.6510, 40.4544, 58.4503



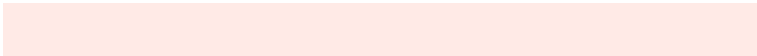
38.0148, 40.4544, 69.6731

Sweetspot

The Sweet Spot groups the original color and five complimentary colors.



44.9005, 40.4563, 32.2309



84.8575, 85.7545, 86.5751



48.5773, 38.8354, 61.1240



17.8778, 17.9548, 17.9110



0.0000, 0.0000, 0.0000



20.3446, 21.4041, 23.3091

Same Dimension

The Same Dimension uses a secret algorithm to generate beautiful new colors.



44.9005, 40.4563, 32.2309



62.1179, 53.4754, 38.3009



51.4735, 53.6025, 34.4219



12.5962, 12.7666, 12.9610



17.2192, 9.5557, 0.9369



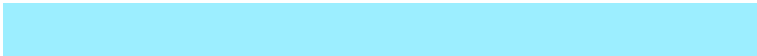
1.0929, 0.6849, 0.0746

Inverse Universe

The Inverse Universe completely reimagines the original color for something new.



44.9346, 53.1142, 71.5023



62.1601, 75.2166, 105.8498



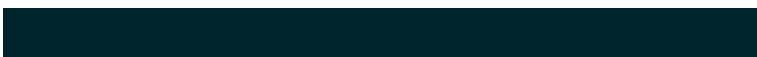
37.8177, 38.8805, 69.1300



12.5998, 13.7231, 15.9223



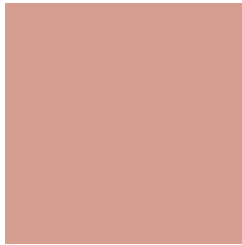
16.8799, 22.0216, 41.8141



1.0676, 1.4272, 2.5385

Previews

White Background



This preview shows how the XYZ color 44.8994, 40.4544, 32.2301 looks on a white background.

Color Contrast Check

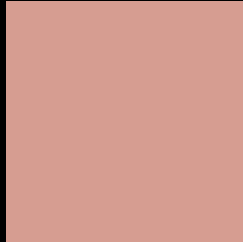
Large Text (above 18pt) WCAG AA × Fail

Any Text WCAG AA × Fail

Large Text (above 18pt) WCAG AAA × Fail

Any Text WCAG AAA × Fail

Black Background



This preview shows how the XYZ color 44.8994, 40.4544, 32.2301 looks on a black background.

Color Contrast Check

Large Text (above 18pt) WCAG AA ✓ Pass

Any Text WCAG AA ✓ Pass

Large Text (above 18pt) WCAG AAA ✓ Pass

Any Text WCAG AAA ✓ Pass

If you want to check with other color combinations, try the [Color Contrast Checker](#).

XYZ 44.8994, 40.4544, 32.2301

Background



This preview shows how black text looks on a background with the XYZ color 44.8994, 40.4544, 32.2301.



This preview shows how white text looks on a background with the XYZ color 44.8994, 40.4544,

Color Blindness Simulation

Color vision deficiency is a very complex topic, and I could not describe the different causes any better than Wikipedia does, so if you want to learn more, you should check out their [article about color blindness](#).

Dichromacy



Original Color

44.8994, 40.4544, 32.2301

Protanopia

38.4023, 40.4814, 35.4954

Deuteranopia

41.3355, 40.4349, 32.0116



Tritanopia

46.7574, 40.4633, 41.4222

Trichromacy



Original Color

44.8994, 40.4544, 32.2301

Protanomaly

40.3658, 40.1566, 34.0573

Deuteranomaly

42.4075, 40.1999, 31.9098

Tritanomaly

45.9172, 40.3584, 37.7176

Monochromacy



Original Color

44.8994, 40.4544, 32.2301

Achromatopsia

39.7200, 41.7885, 45.5077

Achromatomaly

41.1686, 40.9731, 40.3891

CSS Examples

Text

The CSS property to change the color of the text to XYZ 44.8994, 40.4544, 32.2301 is called "color". The color property can be set on classes, ids or directly on the HTML element.

This example shows how text in the color `rgb(214, 157, 145)` looks like.

```
.text, #text, p{  
    color:rgb(214, 157, 145)  
}
```

If you want to add a text shadow in that color use the text-shadow property, you can generate a text shadow directly with our [CSS Text Shadow Generator](#).

Here you see how black text with a 4 pixel rgb(214, 157, 145) colored shadow looks like.

```
.shadow{ text-shadow: 4px 4px 2px rgb(214, 157, 145) }
```

Border

The CSS property to change the border of an element to XYZ 44.8994, 40.4544, 32.2301 is called "border". The border property can be set on classes, ids or directly on the HTML element.

This example shows the color as border, it can be applied via the CSS property "border" or "border-color".

```
.border, #border, table{ border:4px solid rgb(214, 157, 145) }
```


If only the border color should be changed use the property `border-color`.

```
.border{ border-color:rgb(214, 157, 145) }
```

If you want to add a box shadow in that color use:

Here you see how a box with a 4 pixel `rgb(214, 157, 145)` colored shadow looks like.

```
.boxshadow{ -moz-box-shadow:4px 4px 4px  
4px rgb(214, 157, 145); -webkit-box-  
shadow:4px 4px 4px 4px rgb(214, 157, 145);  
box-shadow:4px 4px 4px 4px rgb(214, 157,  
145) }
```

Background

The CSS property to change the background color of an element to XYZ 44.8994, 40.4544, 32.2301 is called "background". The background property can be set on classes, ids or directly on the HTML element.

```
.background, #background, body{  
background: rgb(214, 157, 145) }
```

If only the background color should be changed can be used:

```
.background{ background-color: rgb(214,  
157, 145) }
```

This example shows the color as background, it is applied via the CSS property "background".

To optimize and compress your CSS code, you can use our [online CSS compressor and optimizer](#) based on csstidy. If you want to create a linear or radial gradient as background or border, check our [CSS Gradient Generator](#).

Hey! You found this booklet interesting? Support Converting Colors with the new Membership Option!

The pro membership hides all ads, plus gives you double the colors in the color bucket, and more awesome pro features!

[Learn more, Memberships starting at \\$2.50/m!](#)

**Follow me
on Twitter!**

@ConvertingColor