

Converting Colors

XYZ(44.8100, 42.5592, 41.8153)

Have a look what the booklet for
XYZ(44.8100, 42.5592, 41.8153)
contains.

XYZ(44.8763, 42.5822, 41.9303)	3
<i>Conversions</i>	4
<i>Details</i>	6
<i>Harmonies</i>	12
<i>Previews</i>	24
<i>Color Blindness Simulation</i>	28
<i>CSS Examples</i>	31

Color

**XYZ(44.8763, 42.5822,
41.9303)**

Conversions

Conversions Part 1

Format	Color
Hex	CAA6A6
RGB	202, 166, 166
RGB Percent	79%, 65%, 65%
CMY	0.2078, 0.3490, 0.3490
CMYK	0.00, 0.18, 0.18, 0.21
HSL	0°, 25%, 72%
HSV	0°, 18%, 79%
XYZ	44.8763, 42.5822, 41.9303
YIQ	176.7640, 21.4560, 7.6320

Conversions

Conversions Part 2

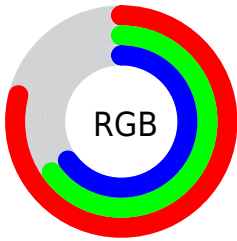
Format	Color
R_{YB}	202, 166, 166
Decimal	13280934
CIE _{Lab}	71.27, 13.17, 4.96
CIE _{LCh}	71, 14.077, 20.625
Yxy	42.5822, 0.3468, 0.3291
Android (android.graphics.Color)	4291471014 (0xFFCAA6A6)
YUV	176.7640, -5.3067, 22.1320
Hunter-Lab	65.2550, 8.5593, 7.5811

Details

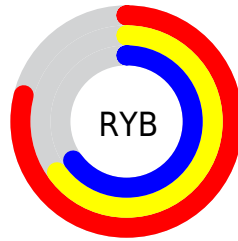
The XYZ color **44.8763, 42.5822, 41.9303** is a light color, and the websafe version is hex **CC9999**. A complement of this color would be **47.5066, 54.6110, 63.9146**, and the grayscale version is **41.6862, 43.8571, 47.7604**.

A 20% lighter version of the original color is **80.1476, 78.1934, 79.2752**, and **21.0872, 19.4526, 18.5629** is the 20% darker color. If you saturate the color by 10%, you get **39.7793, 35.1241, 31.7961**, and if you desaturate by 10%, it is **50.8433, 51.3138, 53.7914**.

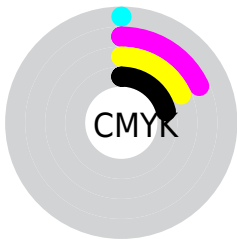
Distribution



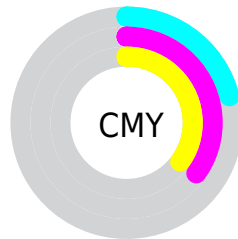
- Red (79%)
- Green (65%)
- Blue (65%)



- Red (79%)
- Yellow (65%)
- Blue (65%)



- Cyan (0%)
- Magenta (18%)
- Yellow (18%)
- Black (21%)





- Cyan (21%)
- Magenta (35%)
- Yellow (35%)

Brightness & Saturation Gradients


These gradients show how the XYZ color 44.8763, 42.5822, 41.9303 changes by changing the brightness by 10 percent. The first figure shows a shift by +10% for each color and the second figure -10%.


Similar to the brightness gradients but the following saturation gradients show a change of the XYZ color 44.8763, 42.5822, 41.9303 by changing the saturation by 10% instead.


 44.8763, 42.5822,
41.9303


 44.8763, 42.5822,
41.9303


357.0645,
356.8907, 369.9851

 31.5609, 29.5574,
28.7216


 81.7730, 79.0800,
79.3631

 21.1802, 19.5029,
18.6265


 106.0849,
103.3218, 104.4242

 13.3690, 12.0342,
11.2267


134.7931,
132.0715, 134.2732

 7.7619, 6.7670,
6.1034

168.2628,
165.7133, 169.3286

 3.9935, 3.3168,
2.8383

206.8594,
204.6318, 210.0089

 1.6984, 1.2993,
1.0127

250.9484,

 0.4553, 0.1406,

249.2113, 256.7327

0.0000

300.8949,
299.8361, 309.9186

0.0000, 0.0000,
0.0000

44.8763, 42.5822,
41.9303

44.8763, 42.5822,
41.9303

39.7793, 35.1241,
31.7961

50.8433, 51.3138,
53.7914

35.5085, 28.8747,
23.3058

57.7146, 61.3682,
67.4518

32.0213, 23.7720,
16.3736

65.5269, 72.7996,
82.9830

29.2703, 19.7464,
10.9049

74.3137, 85.6569,
100.4518

27.2027, 16.7207,
6.7948

78.1673, 91.2967,
108.1099

■ 25.7586, 14.6075,
3.9244

■ 24.8681, 13.3042,
2.1546

■ 24.4294, 12.6623,
1.2829

■ 24.3575, 12.5571,
1.1400

Harmonies

Analogous

The Analogous color harmony consists of three colors that are next to each other on the color wheel.



45.1237, 42.5822, 48.5169



44.8763, 42.5822, 41.9303



43.4246, 42.5822, 37.0155

Triad

The Triadic color harmony groups three colors that are evenly spaced from another and form a triangle on the color wheel.



44.8763, 42.5822, 41.9303



37.0613, 42.5822, 38.5897



39.7375, 42.5822, 60.4255

Complementary

The Complementary color scheme is a pair of colors which are on the opposite of each other on the color wheel.



44.8763, 42.5822, 41.9303



47.5066, 54.6110, 63.9146

Split Complementary

Split-complementary colors differ from the complementary color scheme. The scheme consists of three colors, the original color and two neighbors of the complement color.



37.6585, 42.5822, 57.1690



44.8763, 42.5822, 41.9303



36.1535, 42.5822, 44.2772

Square

The Square scheme is like the rectangle color scheme, but the four colors are evenly spaced on the color wheel.



44.8763, 42.5822, 41.9303



38.8936, 42.5822, 35.2211



36.3678, 42.5822, 51.1014



42.0949, 42.5822, 59.6412

Rectangle

The Rectangle color scheme consists of four colors that form a rectangle on the color wheel.



44.8763, 42.5822, 41.9303



41.9993, 42.5822, 35.1403



36.3678, 42.5822, 51.1014



38.9844, 42.5822, 59.7561

Sweetspot

The Sweet Spot groups the original color and five complimentary colors.



44.8775, 42.5841, 41.9312



89.1316, 91.3398, 97.1340



48.6545, 44.0938, 61.8241



18.9067, 19.3000, 20.4504



0.0000, 0.0000, 0.0000



20.3446, 21.4041, 23.3091

Same Dimension

The Same Dimension uses a secret algorithm to generate beautiful new colors.



44.8775, 42.5841, 41.9312



72.8287, 67.4844, 64.7236



48.3810, 49.5912, 43.0990



11.2125, 11.2139, 11.6530



15.6737, 8.0804, 0.7336



0.8086, 0.4169, 0.0379

Inverse Universe

The Inverse Universe completely reimagines the original color for something new.



47.5066, 54.6110, 63.9146



78.0167, 91.2163, 108.1023



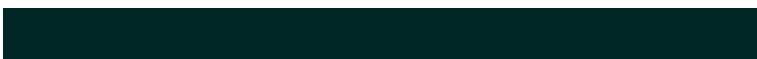
43.5275, 46.6528, 62.5883



11.5432, 12.7269, 14.4185



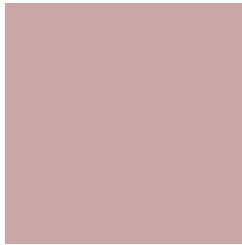
20.4476, 29.9191, 40.6535



1.0549, 1.5436, 2.0973

Previews

White Background



This preview shows how the XYZ color 44.8763, 42.5822, 41.9303 looks on a white background.

Color Contrast Check

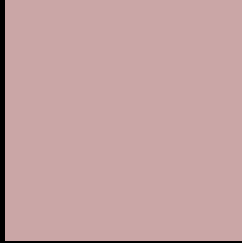
Large Text (above 18pt) WCAG AA × Fail

Any Text WCAG AA × Fail

Large Text (above 18pt) WCAG AAA × Fail

Any Text WCAG AAA × Fail

Black Background



This preview shows how the XYZ color 44.8763, 42.5822, 41.9303 looks on a black background.

Color Contrast Check

Large Text (above 18pt) WCAG AA ✓ Pass

Any Text WCAG AA ✓ Pass

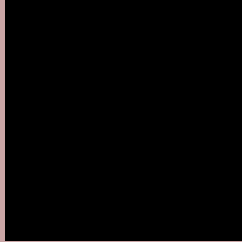
Large Text (above 18pt) WCAG AAA ✓ Pass

Any Text WCAG AAA ✓ Pass

If you want to check with other color combinations, try the [Color Contrast Checker](#).

XYZ 44.8763, 42.5822, 41.9303

Background



This preview shows how black text looks on a background with the XYZ color 44.8763, 42.5822, 41.9303.



This preview shows how white text looks on a background with the XYZ color 44.8763, 42.5822,

Color Blindness Simulation

Color vision deficiency is a very complex topic, and I could not describe the different causes any better than Wikipedia does, so if you want to learn more, you should check out their [article about color blindness](#).

Dichromacy



Original Color

44.8763, 42.5822, 41.9303

Protanopia

40.9822, 42.7581, 44.1234

Deuteranopia

43.4852, 42.6946, 41.5463



Tritanopia

45.8399, 42.4218, 47.3672

Trichromacy



Original Color

44.8763, 42.5822, 41.9303

Protanomaly

42.2179, 42.5552, 43.5250

Deuteranomaly

44.0829, 42.7276, 41.5212

Tritanomaly

45.6266, 42.6239, 45.3576

Monochromacy



Original Color

44.8763, 42.5822, 41.9303

Achromatopsia

41.7894, 43.9657, 47.8787

Achromatomaly

42.7361, 43.3434, 45.6488

CSS Examples

Text

The CSS property to change the color of the text to XYZ 44.8763, 42.5822, 41.9303 is called "color". The color property can be set on classes, ids or directly on the HTML element.

This example shows how text in the color `rgb(202, 166, 166)` looks like.

```
.text, #text, p{  
    color:rgb(202, 166, 166)  
}
```

If you want to add a text shadow in that color use the text-shadow property, you can generate a text shadow directly with our [CSS Text Shadow Generator](#).

Here you see how black text with a 4 pixel rgb(202, 166, 166) colored shadow looks like.

```
.shadow{ text-shadow: 4px 4px 2px rgb(202, 166, 166) }
```

Border

The CSS property to change the border of an element to XYZ 44.8763, 42.5822, 41.9303 is called "border". The border property can be set on classes, ids or directly on the HTML element.

This example shows the color as border, it can be applied via the CSS property "border" or "border-color".

```
.border, #border, table{ border:4px solid rgb(202, 166, 166) }
```


If only the border color should be changed use the property `border-color`.

```
.border{ border-color:rgb(202, 166, 166) }
```

If you want to add a box shadow in that color use:

Here you see how a box with a 4 pixel `rgb(202, 166, 166)` colored shadow looks like.

```
.boxshadow{ -moz-box-shadow:4px 4px 4px  
4px rgb(202, 166, 166); -webkit-box-  
shadow:4px 4px 4px 4px rgb(202, 166, 166);  
box-shadow:4px 4px 4px 4px rgb(202, 166,  
166) }
```

Background

The CSS property to change the background color of an element to XYZ 44.8763, 42.5822, 41.9303 is called "background". The background property can be set on classes, ids or directly on the HTML element.

```
.background, #background, body{  
background: rgb(202, 166, 166) }
```

If only the background color should be changed can be used:

```
.background{ background-color: rgb(202,  
166, 166) }
```

This example shows the color as background, it is applied via the CSS property "background".

To optimize and compress your CSS code, you can use our [online CSS compressor and optimizer](#) based on csstidy. If you want to create a linear or radial gradient as background or border, check our [CSS Gradient Generator](#).

Hey! You found this booklet interesting? Support Converting Colors with the new Membership Option!

The pro membership hides all ads, plus gives you double the colors in the color bucket, and more awesome pro features!

[Learn more, Memberships starting at \\$2.50/m!](#)

**Follow me
on Twitter!**

@ConvertingColor