

Converting Colors

XYZ(44.8767, 46.4459, 43.1062)

Have a look what the booklet for
XYZ(44.8767, 46.4459, 43.1062)
contains.

XYZ(45.0345, 46.6390, 43.1879)	3
<i>Conversions</i>	4
<i>Details</i>	6
<i>Harmonies</i>	12
<i>Previews</i>	24
<i>Color Blindness Simulation</i>	28
<i>CSS Examples</i>	31

Color

**XYZ(45.0345, 46.6390,
43.1879)**

Conversions

Conversions Part 1

Format	Color
Hex	C0B4A7
RGB	192, 180, 167
RGB Percent	75%, 71%, 65%
CMY	0.2471, 0.2941, 0.3451
CMYK	0.00, 0.06, 0.13, 0.25
HSL	31°, 17%, 70%
HSV	31°, 13%, 75%
XYZ	45.0345, 46.6390, 43.1879
YIQ	182.1060, 11.3250, -1.4990

Conversions

Conversions Part 2

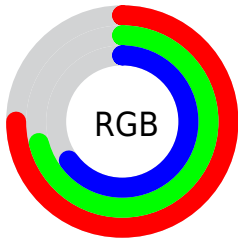
Format	Color
RYB	190, 192, 167
Decimal	12629159
CIELab	73.96, 2.05, 8.15
CIElCh	74, 8.405, 75.909
Yxy	46.6390, 0.3339, 0.3458
Android (android.graphics.Color)	4290819239 (0xFFC0B4A7)
YUV	182.1060, -7.4473, 8.6770
Hunter-Lab	68.2928, -1.8035, 10.3103

Details

The XYZ color **45.0345, 46.6390, 43.1879** is a light color, and the websafe version is hex **CCCCCC**. A complement of this color would be **41.5707, 44.2605, 56.2216**, and the grayscale version is **44.5572, 46.8776, 51.0497**.

A 20% lighter version of the original color is **82.2472, 85.4046, 81.2571**, and **21.1651, 21.8198, 19.3158** is the 20% darker color. If you saturate the color by 10%, you get **41.5915, 42.3856, 33.9237**, and if you desaturate by 10%, it is **48.8672, 51.2493, 53.8833**.

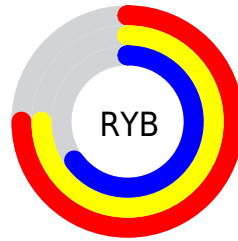
Distribution



Red (75%)

Green (71%)

Blue (65%)



Red (75%)

Yellow (75%)

Blue (65%)

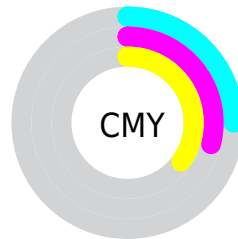


Cyan (0%)

Magenta (6%)

Yellow (13%)

Black (25%)



Cyan (25%)

Magenta (29%)

Yellow (35%)

Brightness & Saturation Gradients

These gradients show how the XYZ color 45.0345, 46.6390, 43.1879 changes by changing the brightness by 10 percent. The first figure shows a shift by +10% for each color and the second figure -10%.

Similar to the brightness gradients but the following saturation gradients show a change of the XYZ color 45.0345, 46.6390, 43.1879 by changing the saturation by 10% instead.

■ 45.0345, 46.6390,
43.1879

■ 45.0345, 46.6390,
43.1879

357.6946,
373.3717, 375.3278

■ 31.6860, 32.7504,
29.7001

■ 82.0089, 85.1745,
81.2837

■ 21.2762, 21.9353,
19.3609

■ 106.3656,
110.5902, 106.7288

■ 13.4396, 13.8093,
11.7519

135.1223,
140.6170, 136.9967

■ 7.8110, 7.9882,
6.4545

168.6444,
175.6393, 172.5060

■ 4.0251, 4.0874,
3.0501

207.2974,
216.0415, 213.6753

■ 1.7163, 1.7226,
1.1203

251.4465,

■ 0.4665, 0.4382,

262.2081, 260.9229

0.0000

301.4571,
314.5233, 314.6676

■ 0.0000, 0.0000,
0.0000

■ 45.0345, 46.6390,
43.1879

■ 45.0345, 46.6390,
43.1879

■ 41.5915, 42.3856,
33.9237

■ 48.8672, 51.2493,
53.8833

■ 38.5206, 38.4734,
26.0261

■ 53.0991, 56.2192,
66.0648

■ 35.8080, 34.8946,
19.4296

■ 57.7439, 61.5594,
79.7883

■ 33.4378, 31.6389,
14.0624

■ 62.8134, 67.2782,
95.1055

■ 31.3924, 28.6949,
9.8455

■ 67.0038, 72.8575,
105.1392

■ 29.6527, 26.0507,
6.6908

■ 69.5779, 78.0056,
105.9972

■ 28.1967, 23.6930,
4.4968

■ 72.2886, 83.4271,
106.9008

■ 26.9986, 21.6067,
3.1420

■ 75.1381, 89.1259,
107.8506

■ 26.2830, 20.2959,
2.5322

■ 75.5484, 89.9465,
107.9873

Harmonies

Analogous

The Analogous color harmony consists of three colors that are next to each other on the color wheel.



46.3652, 46.6390, 45.0800



45.0345, 46.6390, 43.1879



43.5434, 46.6390, 43.2488

Triad

The Triadic color harmony groups three colors that are evenly spaced from another and form a triangle on the color wheel.



45.0345, 46.6390, 43.1879



41.6140, 46.6390, 53.0788



46.4319, 46.6390, 56.7457

Complementary

The Complementary color scheme is a pair of colors which are on the opposite of each other on the color wheel.



45.0345, 46.6390, 43.1879



41.5707, 44.2605, 56.2216

Split Complementary

Split-complementary colors differ from the complementary color scheme. The scheme consists of three colors, the original color and two neighbors of the complement color.



45.1239, 46.6390, 59.1427



45.0345, 46.6390, 43.1879



42.3533, 46.6390, 56.9455

Square

The Square scheme is like the rectangle color scheme, but the four colors are evenly spaced on the color wheel.



45.0345, 46.6390, 43.1879



41.5913, 46.6390, 48.7984



43.6308, 46.6390, 59.2178



47.1842, 46.6390, 52.8185

Rectangle

The Rectangle color scheme consists of four colors that form a rectangle on the color wheel.



45.0345, 46.6390, 43.1879



42.6596, 46.6390, 44.3843



43.6308, 46.6390, 59.2178



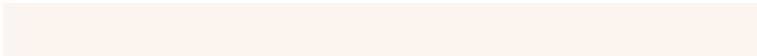
46.0413, 46.6390, 57.7666

Sweetspot

The Sweet Spot groups the original color and five complimentary colors.



45.0358, 46.6411, 43.1889



87.7861, 91.9585, 95.4863



43.7026, 42.1026, 48.5158



18.7157, 19.5883, 20.1537



92.9021, 97.7402, 106.4391



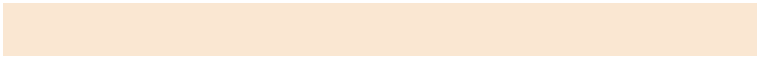
19.4759, 20.4902, 22.3138

Same Dimension

The Same Dimension uses a secret algorithm to generate beautiful new colors.



45.0358, 46.6411, 43.1889



79.5068, 81.9462, 72.5447



47.4579, 51.6418, 44.0265



10.4969, 10.9252, 10.6174



17.7640, 13.8137, 1.7300



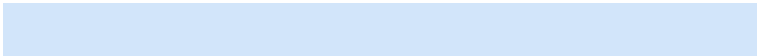
0.8362, 0.7343, 0.0977

Inverse Universe

The Inverse Universe completely reimagines the original color for something new.



41.5707, 44.2605, 56.2216



71.8417, 76.6804, 101.3746



39.3583, 39.7049, 55.4589



9.9181, 10.5276, 12.7941



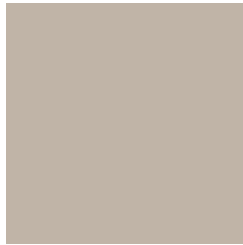
9.0622, 7.8809, 34.6001



0.4605, 0.4785, 1.5180

Previews

White Background



This preview shows how the XYZ color 45.0345, 46.6390, 43.1879 looks on a white background.

Color Contrast Check

Large Text (above 18pt) WCAG AA × Fail

Any Text WCAG AA × Fail

Large Text (above 18pt) WCAG AAA × Fail

Any Text WCAG AAA × Fail

Black Background



This preview shows how the XYZ color 45.0345, 46.6390, 43.1879 looks on a black background.

Color Contrast Check

Large Text (above 18pt) WCAG AA ✓ Pass

Any Text WCAG AA ✓ Pass

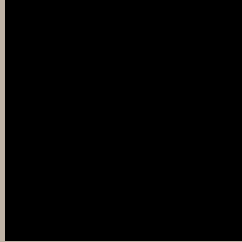
Large Text (above 18pt) WCAG AAA ✓ Pass

Any Text WCAG AAA ✓ Pass

If you want to check with other color combinations, try the [Color Contrast Checker](#).

XYZ 45.0345, 46.6390, 43.1879

Background



This preview shows how black text looks on a background with the XYZ color 45.0345, 46.6390, 43.1879.

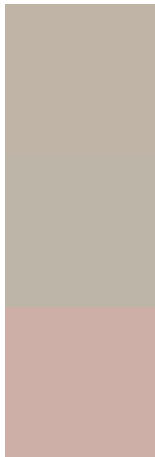


This preview shows how white text looks on a background with the XYZ color 45.0345, 46.6390,

Color Blindness Simulation

Color vision deficiency is a very complex topic, and I could not describe the different causes any better than Wikipedia does, so if you want to learn more, you should check out their [article about color blindness](#).

Dichromacy



Original Color

45.0345, 46.6390, 43.1879

Protanopia

44.3308, 46.5663, 43.6975

Deuteranopia

47.5747, 46.4662, 43.5072



Tritanopia

47.5221, 46.7641, 55.2369

Trichromacy



Original Color

45.0345, 46.6390, 43.1879

Protanomaly

44.5780, 46.6937, 43.7091

Deuteranomaly

46.6094, 46.5508, 43.5744

Tritanomaly

46.6120, 46.6875, 50.8108

Monochromacy



Original Color

45.0345, 46.6390, 43.1879

Achromatopsia

44.4628, 46.7784, 50.9417

Achromatomaly

44.7094, 46.6612, 48.2450

CSS Examples

Text

The CSS property to change the color of the text to XYZ 45.0345, 46.6390, 43.1879 is called "color". The color property can be set on classes, ids or directly on the HTML element.

This example shows how text in the color `rgb(192, 180, 167)` looks like.

```
.text, #text, p{  
    color:rgb(192, 180, 167)  
}
```

If you want to add a text shadow in that color use the text-shadow property, you can generate a text shadow directly with our [CSS Text Shadow Generator](#).

Here you see how black text with a 4 pixel rgb(192, 180, 167) colored shadow looks like.

```
.shadow{ text-shadow: 4px 4px 2px rgb(192, 180, 167) }
```

Border

The CSS property to change the border of an element to XYZ 45.0345, 46.6390, 43.1879 is called "border". The border property can be set on classes, ids or directly on the HTML element.

This example shows the color as border, it can be applied via the CSS property "border" or "border-color".

```
.border, #border, table{ border:4px solid rgb(192, 180, 167) }
```


If only the border color should be changed use the property `border-color`.

```
.border{ border-color:rgb(192, 180, 167) }
```

If you want to add a box shadow in that color use:

Here you see how a box with a 4 pixel `rgb(192, 180, 167)` colored shadow looks like.

```
.boxshadow{ -moz-box-shadow:4px 4px 4px  
4px rgb(192, 180, 167); -webkit-box-  
shadow:4px 4px 4px 4px rgb(192, 180, 167);  
box-shadow:4px 4px 4px 4px rgb(192, 180,  
167) }
```

Background

The CSS property to change the background color of an element to XYZ 45.0345, 46.6390, 43.1879 is called "background". The background property can be set on classes, ids or directly on the HTML element.

```
.background, #background, body{  
background: rgb(192, 180, 167) }
```

If only the background color should be changed can be used:

```
.background{ background-color: rgb(192,  
180, 167) }
```

This example shows the color as background, it is applied via the CSS property "background".

To optimize and compress your CSS code, you can use our [online CSS compressor and optimizer](#) based on csstidy. If you want to create a linear or radial gradient as background or border, check our [CSS Gradient Generator](#).

Hey! You found this booklet interesting? Support Converting Colors with the new Membership Option!

The pro membership hides all ads, plus gives you double the colors in the color bucket, and more awesome pro features!

[Learn more, Memberships starting at \\$2.50/m!](#)

**Follow me
on Twitter!**

@ConvertingColor