

Converting Colors

XYZ(44.8873, 42.1455, 36.2096)

Have a look what the booklet for
XYZ(44.8873, 42.1455, 36.2096)
contains.

XYZ(44.8403, 42.1494, 36.3442)	3
<i>Conversions</i>	4
<i>Details</i>	6
<i>Harmonies</i>	12
<i>Previews</i>	24
<i>Color Blindness Simulation</i>	28
<i>CSS Examples</i>	31

Color

**XYZ(44.8403, 42.1494,
36.3442)**

Conversions

Conversions Part 1

Format	Color
Hex	CFA49A
RGB	207, 164, 154
RGB Percent	81%, 64%, 60%
CMY	0.1882, 0.3568, 0.3961
CMYK	0.00, 0.21, 0.26, 0.19
HSL	11°, 36%, 71%
HSV	11°, 26%, 81%
XYZ	44.8403, 42.1494, 36.3442
YIQ	175.7170, 28.8380, 6.0060

Conversions

Conversions Part 2

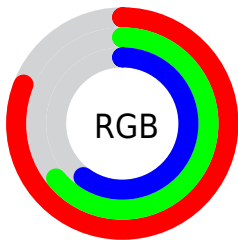
Format	Color
RYB	207, 166, 154
Decimal	13608090
CIELab	70.97, 14.35, 11.22
CIElCh	71, 18.215, 38.020
Yxy	42.1494, 0.3636, 0.3418
Android (android.graphics.Color)	4291798170 (0xFFCFA49A)
YUV	175.7170, -10.7065, 27.4352
Hunter-Lab	64.9226, 9.6707, 12.2548

Details

The XYZ color **44.8403, 42.1494, 36.3442** is a light color, and the websafe version is hex **CC9999**. A complement of this color would be **44.5546, 51.3060, 66.5864**, and the grayscale version is **41.1638, 43.3076, 47.1619**.

A 20% lighter version of the original color is **77.9567, 76.4771, 70.3273**, and **21.1912, 19.2430, 15.4293** is the 20% darker color. If you saturate the color by 10%, you get **40.4535, 35.9008, 27.0970**, and if you desaturate by 10%, it is **49.9236, 49.3145, 47.2912**.

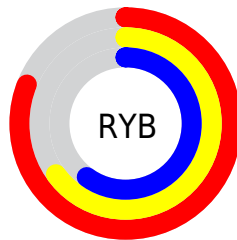
Distribution



Red (81%)

Green (64%)

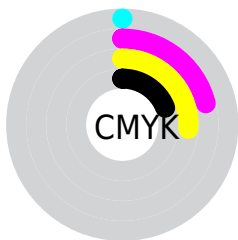
Blue (60%)



Red (81%)

Yellow (65%)

Blue (60%)

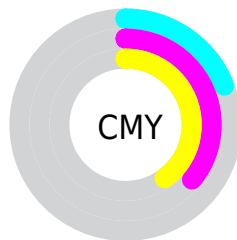


Cyan (0%)

Magenta (21%)

Yellow (26%)

Black (19%)



Cyan (19%)


Magenta (36%)


Yellow (40%)

Brightness & Saturation Gradients


These gradients show how the XYZ color 44.8403, 42.1494, 36.3442 changes by changing the brightness by 10 percent. The first figure shows a shift by +10% for each color and the second figure -10%.


Similar to the brightness gradients but the following saturation gradients show a change of the XYZ color 44.8403, 42.1494, 36.3442 by changing the saturation by 10% instead.


 44.8403, 42.1494,
36.3442


 44.8403, 42.1494,
36.3442


356.9210,
355.1019, 345.5453

 31.5324, 29.2183,
24.4083


 81.7193, 78.4257,
70.7380

 21.1584, 19.2460,
15.4218


 106.0210,
102.5397, 94.0331

 13.3530, 11.8482,
8.9661


134.7181,
131.1500, 121.9516

 7.7507, 6.6404,
4.6225

168.1759,
164.6412, 154.9121

 3.9863, 3.2382,
1.9727

206.7597,
203.3976, 193.3332

 1.6944, 1.2573,
0.5384

250.8349,

 0.4528, 0.1078,

247.8036, 237.6334

0.0000

300.7669,
298.2435, 288.2313

■ 0.0000, 0.0000,
0.0000

■ 44.8403, 42.1494,
36.3442

■ 44.8403, 42.1494,
36.3442

■ 40.4535, 35.9008,
27.0970

■ 49.9236, 49.3145,
47.2912

■ 36.7290, 30.5259,
19.4616

■ 55.7286, 57.4251,
60.0150

■ 33.6350, 25.9870,
13.3458

■ 62.2837, 66.5160,
74.5907

■ 31.1354, 22.2417,
8.6472

■ 69.6145, 76.6188,
91.0886

■ 29.1905, 19.2434,
5.2505

■ 77.3401, 87.6012,
107.4402

■ 27.7553, 16.9408,
3.0221

■ 79.5422, 92.0054,
108.1742

■ 26.7769, 15.2752,
1.7984

■ 26.4601, 14.7212,
1.4469

Harmonies

Analogous

The Analogous color harmony consists of three colors that are next to each other on the color wheel.



46.1267, 42.1494, 43.5995



44.8403, 42.1494, 36.3442



42.2873, 42.1494, 32.0667

Triad

The Triadic color harmony groups three colors that are evenly spaced from another and form a triangle on the color wheel.



44.8403, 42.1494, 36.3442



34.8871, 42.1494, 39.9145



40.8820, 42.1494, 64.5252

Complementary

The Complementary color scheme is a pair of colors which are on the opposite of each other on the color wheel.



44.8403, 42.1494, 36.3442



44.5546, 51.3060, 66.5864

Split Complementary

Split-complementary colors differ from the complementary color scheme. The scheme consists of three colors, the original color and two neighbors of the complement color.



37.9157, 42.1494, 63.2140



44.8403, 42.1494, 36.3442



34.5532, 42.1494, 48.2667

Square

The Square scheme is like the rectangle color scheme, but the four colors are evenly spaced on the color wheel.



44.8403, 42.1494, 36.3442



36.5716, 42.1494, 33.9393



35.6353, 42.1494, 56.9842



43.7672, 42.1494, 60.3692

Rectangle

The Rectangle color scheme consists of four colors that form a rectangle on the color wheel.



44.8403, 42.1494, 36.3442



40.2638, 42.1494, 31.1267



35.6353, 42.1494, 56.9842



39.8604, 42.1494, 64.7182

Sweetspot

The Sweet Spot groups the original color and five complimentary colors.



44.8414, 42.1513, 36.3451



86.8836, 88.6469, 90.8259



47.3986, 40.4213, 58.2979



18.2868, 18.5417, 18.7594



0.0000, 0.0000, 0.0000



20.3446, 21.4041, 23.3091

Same Dimension

The Same Dimension uses a secret algorithm to generate beautiful new colors.



44.8414, 42.1513, 36.3451



67.6742, 61.5980, 49.3712



50.0256, 52.5197, 38.0731



11.9867, 12.1642, 12.3282



16.7227, 9.3783, 0.9288



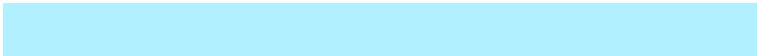
0.9901, 0.6345, 0.0703

Inverse Universe

The Inverse Universe completely reimagines the original color for something new.



44.5546, 51.3060, 66.5864



67.1265, 78.8109, 106.2818



39.1114, 40.4196, 64.7720



11.9608, 13.0119, 15.1248



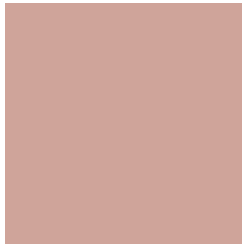
15.9752, 20.5970, 40.3261



0.9434, 1.2519, 2.2715

Previews

White Background



This preview shows how the XYZ color 44.8403, 42.1494, 36.3442 looks on a white background.

Color Contrast Check

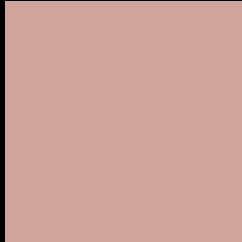
Large Text (above 18pt) WCAG AA × Fail

Any Text WCAG AA × Fail

Large Text (above 18pt) WCAG AAA × Fail

Any Text WCAG AAA × Fail

Black Background



This preview shows how the XYZ color 44.8403, 42.1494, 36.3442 looks on a black background.

Color Contrast Check

Large Text (above 18pt) WCAG AA ✓ Pass

Any Text WCAG AA ✓ Pass

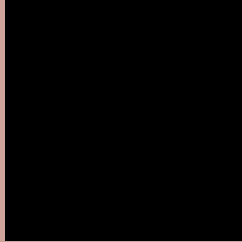
Large Text (above 18pt) WCAG AAA ✓ Pass

Any Text WCAG AAA ✓ Pass

If you want to check with other color combinations, try the [Color Contrast Checker](#).

XYZ 44.8403, 42.1494, 36.3442

Background



This preview shows how black text looks on a background with the XYZ color 44.8403, 42.1494, 36.3442.



This preview shows how white text looks on a background with the XYZ color 44.8403, 42.1494,

Color Blindness Simulation

Color vision deficiency is a very complex topic, and I could not describe the different causes any better than Wikipedia does, so if you want to learn more, you should check out their [article about color blindness](#).

Dichromacy



Original Color

44.8403, 42.1494, 36.3442

Protanopia

40.2576, 42.2141, 38.8272

Deuteranopia

43.0411, 42.3109, 36.0353



Tritanopia

46.6793, 42.1010, 45.7104

Trichromacy



Original Color

44.8403, 42.1494, 36.3442

Protanomaly

41.6957, 42.1309, 37.8328

Deuteranomaly

43.6559, 42.3548, 36.0114

Tritanomaly

45.9078, 42.0406, 42.2543

Monochromacy



Original Color

44.8403, 42.1494, 36.3442

Achromatopsia

41.2663, 43.4154, 47.2793

Achromatomaly

42.3139, 42.8970, 43.0956

CSS Examples

Text

The CSS property to change the color of the text to XYZ 44.8403, 42.1494, 36.3442 is called "color". The color property can be set on classes, ids or directly on the HTML element.

This example shows how text in the color `rgb(207, 164, 154)` looks like.

```
.text, #text, p{  
    color:rgb(207, 164, 154)  
}
```

If you want to add a text shadow in that color use the text-shadow property, you can generate a text shadow directly with our [CSS Text Shadow Generator](#).

Here you see how black text with a 4 pixel rgb(207, 164, 154) colored shadow looks like.

```
.shadow{ text-shadow: 4px 4px 2px rgb(207, 164, 154) }
```

Border

The CSS property to change the border of an element to XYZ 44.8403, 42.1494, 36.3442 is called "border". The border property can be set on classes, ids or directly on the HTML element.

This example shows the color as border, it can be applied via the CSS property "border" or "border-color".

```
.border, #border, table{ border:4px solid rgb(207, 164, 154) }
```


If only the border color should be changed use the property border-color.

```
.border{ border-color:rgb(207, 164, 154) }
```

If you want to add a box shadow in that color use:

Here you see how a box with a 4 pixel rgb(207, 164, 154) colored shadow looks like.

```
.boxshadow{ -moz-box-shadow:4px 4px 4px  
4px rgb(207, 164, 154); -webkit-box-  
shadow:4px 4px 4px 4px rgb(207, 164, 154);  
box-shadow:4px 4px 4px 4px rgb(207, 164,  
154) }
```

Background

The CSS property to change the background color of an element to XYZ 44.8403, 42.1494, 36.3442 is called "background". The background property can be set on classes, ids or directly on the HTML element.

```
.background, #background, body{  
background: rgb(207, 164, 154) }
```

If only the background color should be changed can be used:

```
.background{ background-color: rgb(207,  
164, 154) }
```

This example shows the color as background, it is applied via the CSS property "background".

To optimize and compress your CSS code, you can use our [online CSS compressor and optimizer](#) based on csstidy. If you want to create a linear or radial gradient as background or border, check our [CSS Gradient Generator](#).

Hey! You found this booklet interesting? Support Converting Colors with the new Membership Option!

The pro membership hides all ads, plus gives you double the colors in the color bucket, and more awesome pro features!

[Learn more, Memberships starting at \\$2.50/m!](#)

**Follow me
on Twitter!**

@ConvertingColor