

# Converting Colors

XYZ(44.9250, 43.6369, 46.9766)

Have a look what the booklet for  
XYZ(44.9250, 43.6369, 46.9766)  
contains.

<b>XYZ(44.9761, 43.6198, 47.1233)</b> .....	3
<b><i>Conversions</i></b> .....	4
<b><i>Details</i></b> .....	6
<b><i>Harmonies</i></b> .....	12
<b><i>Previews</i></b> .....	24
<b><i>Color Blindness Simulation</i></b> .....	28
<b><i>CSS Examples</i></b> .....	31

# Color

**XYZ(44.9761, 43.6198,  
47.1233)**

# Conversions

## Conversions Part 1

Format	Color
Hex	C4AAB0
RGB	196, 170, 176
RGB Percent	77%, 67%, 69%
CMY	0.2314, 0.3333, 0.3098
CMYK	0.00, 0.13, 0.10, 0.23
HSL	346°, 18%, 72%
HSV	346°, 13%, 77%
XYZ	44.9761, 43.6198, 47.1233
YIQ	178.4580, 13.5700, 7.3780

# Conversions

## Conversions Part 2

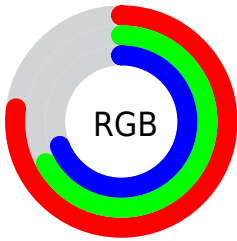
Format	Color
R <sub>Y</sub> B	196, 170, 176
Decimal	12888752
CIE Lab	71.97, 10.43, 0.40
CIE LCh	72, 10.440, 2.175
Yxy	43.6198, 0.3314, 0.3214
Android (android.graphics.Color)	4291078832 (0xFFC4AAB0)
YUV	178.4580, -1.2118, 15.3843
Hunter-Lab	66.0453, 5.9772, 3.9283

# Details

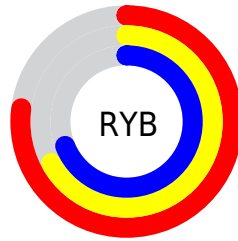
The XYZ color **44.9761, 43.6198, 47.1233** is a light color, and the websafe version is hex **CC9999**. A complement of this color would be **45.6134, 51.7446, 56.3012**, and the grayscale version is **42.5617, 44.7783, 48.7635**.

A 20% lighter version of the original color is **81.9987, 80.5593, 87.5716**, and **21.2719, 20.1629, 21.8395** is the 20% darker color. If you saturate the color by 10%, you get **40.1623, 36.2484, 38.5622**, and if you desaturate by 10%, it is **50.5059, 52.1569, 56.7418**.

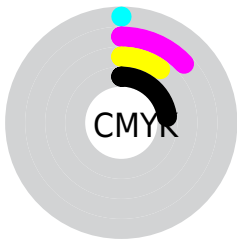
# Distribution



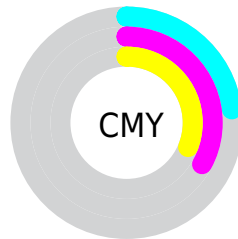
- Red (77%)
- Green (67%)
- Blue (69%)



- Red (77%)
- Yellow (67%)
- Blue (69%)



- Cyan (0%)
- Magenta (13%)
- Yellow (10%)
- Black (23%)



- Cyan (23%)
- Magenta (33%)
- Yellow (31%)

# Brightness & Saturation Gradients

These gradients show how the XYZ color 44.9761, 43.6198, 47.1233 changes by changing the brightness by 10 percent. The first figure shows a shift by +10% for each color and the second figure -10%.

Similar to the brightness gradients but the following saturation gradients show a change of the XYZ color 44.9761, 43.6198, 47.1233 by changing the saturation by 10% instead.



■ 44.9761, 43.6198,  
47.1233

■ 44.9761, 43.6198,  
47.1233

357.4621,  
361.1545, 391.7145

■ 31.6398, 30.3717,  
32.7781

■ 81.9218, 80.6453,  
87.2495

■ 21.2407, 20.1209,  
21.6868

106.2620,  
105.1916, 113.8677

■ 13.4135, 12.4830,  
13.4308

135.0008,  
134.2727, 145.4139

■ 7.7929, 7.0735,  
7.5917

168.5036,  
168.2730, 182.3066

■ 4.0134, 3.5081,  
3.7508

207.1358,  
207.5769, 224.9645

■ 1.7097, 1.4024,  
1.4897

251.2627,

■ 0.4623, 0.2185,

252.5689, 273.8061

0.2102

301.2497,  
303.6333, 329.2499

0.0000, 0.0000,  
0.0000

44.9761, 43.6198,  
47.1233

44.9761, 43.6198,  
47.1233

40.1623, 36.2484,  
38.5622

50.5059, 52.1569,  
56.7418

36.0313, 29.9865,  
31.0192

56.7758, 61.9014,  
67.4496

32.5527, 24.7817,  
24.4568

63.8134, 72.8998,  
79.2807

29.6922, 20.5754,  
18.8338

71.6436, 85.1945,  
92.2666

27.4125, 17.3030,  
14.1062

76.0002, 90.2459,  
105.0078

■ 25.6720, 14.8924,  
10.2261

■ 76.5751, 90.4758,  
108.0354

■ 24.4233, 13.2606,  
7.1412

■ 23.6101, 12.3083,  
4.7925

■ 23.2428, 11.9269,  
3.5811

# Harmonies

## Analogous

The Analogous color harmony consists of three colors that are next to each other on the color wheel.



44.5620, 43.6198, 52.2207



44.9761, 43.6198, 47.1233



44.4257, 43.6198, 42.4614

# Triad

The Triadic color harmony groups three colors that are evenly spaced from another and form a triangle on the color wheel.



44.9761, 43.6198, 47.1233



39.6625, 43.6198, 39.6680



39.8814, 43.6198, 56.7061

# Complementary

The Complementary color scheme is a pair of colors which are on the opposite of each other on the color wheel.



44.9761, 43.6198, 47.1233



45.6134, 51.7446, 56.3012

# Split Complementary

Split-complementary colors differ from the complementary color scheme. The scheme consists of three colors, the original color and two neighbors of the complement color.



38.6280, 43.6198, 52.9105



44.9761, 43.6198, 47.1233



38.5041, 43.6198, 43.0625

# Square

The Square scheme is like the rectangle color scheme, but the four colors are evenly spaced on the color wheel.



44.9761, 43.6198, 47.1233



41.3295, 43.6198, 38.3534



38.1308, 43.6198, 47.8677



41.5894, 43.6198, 57.9838



# Rectangle

The Rectangle color scheme consists of four colors that form a rectangle on the color wheel.



44.9761, 43.6198, 47.1233



43.5949, 43.6198, 40.1618



38.1308, 43.6198, 47.8677



39.3946, 43.6198, 55.6696

# Sweetspot

The Sweet Spot groups the original color and five complimentary colors.



44.9773, 43.6217, 47.1242



90.6440, 93.1687, 101.3253



45.5584, 43.6756, 58.2539



19.2295, 19.6756, 21.3907



0.0000, 0.0000, 0.0000



20.3446, 21.4041, 23.3091



# Same Dimension

The Same Dimension uses a secret algorithm to generate beautiful new colors.



44.9773, 43.6217, 47.1242



78.7391, 74.8152, 80.5358



45.7310, 46.0577, 44.5123



10.1663, 10.1151, 10.9661



14.9623, 7.6747, 2.4477



0.6739, 0.3426, 0.2502



# Inverse Universe

The Inverse Universe completely reimagines the original color for something new.



44.9773, 43.6217, 47.1242



78.7391, 74.8152, 80.5358



44.7548, 48.9568, 59.3157



10.1663, 10.1151, 10.9661



14.9623, 7.6747, 2.4477

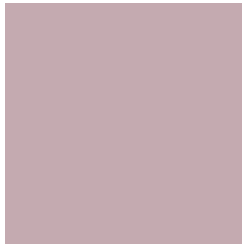


0.6739, 0.3426, 0.2502



# Previews

## White Background



This preview shows how the XYZ color 44.9761, 43.6198, 47.1233 looks on a white background.

## Color Contrast Check

Large Text (above 18pt) WCAG AA × Fail

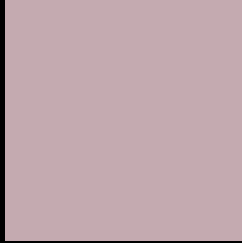
Any Text WCAG AA × Fail

Large Text (above 18pt) WCAG AAA × Fail

Any Text WCAG AAA × Fail



# Black Background



This preview shows how the XYZ color 44.9761, 43.6198, 47.1233 looks on a black background.

## Color Contrast Check

Large Text (above 18pt) WCAG AA ✓ Pass

Any Text WCAG AA ✓ Pass

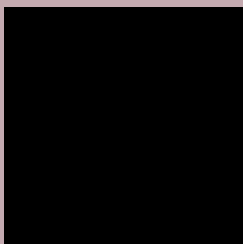
Large Text (above 18pt) WCAG AAA ✓ Pass

Any Text WCAG AAA ✓ Pass

If you want to check with other color combinations, try the [Color Contrast Checker](#).

**XYZ 44.9761, 43.6198, 47.1233**

## **Background**



This preview shows how black text looks on a background with the XYZ color 44.9761, 43.6198, 47.1233.



This preview shows how white text looks on a background with the XYZ color 44.9761, 43.6198,



# Color Blindness Simulation

Color vision deficiency is a very complex topic, and I could not describe the different causes any better than Wikipedia does, so if you want to learn more, you should check out their [article about color blindness](#).

## Dichromacy



### Original Color

44.9761, 43.6198, 47.1233

### Protanopia

42.2524, 43.8890, 48.8923

### Deuteranopia

44.6475, 43.7297, 47.1618



## Tritanopia

45.6574, 43.6236, 50.2698

# Trichromacy



## Original Color

44.9761, 43.6198, 47.1233

## Protanomaly

43.1795, 43.8007, 48.2981

## Deuteranomaly

44.9051, 43.8625, 47.1739

## Tritanomaly

45.4521, 43.5415, 49.1888

# Monochromacy



## Original Color

44.9761, 43.6198, 47.1233

## Achromatopsia

42.3164, 44.5201, 48.4824

## Achromatomaly

43.2734, 44.1486, 47.8357

# CSS Examples

## Text

The CSS property to change the color of the text to XYZ 44.9761, 43.6198, 47.1233 is called "color". The color property can be set on classes, ids or directly on the HTML element.

This example shows how text in the color `rgb(196, 170, 176)` looks like.

```
.text, #text, p{  
    color:rgb(196, 170, 176)  
}
```

If you want to add a text shadow in that color use the text-shadow property, you can generate a text shadow directly with our [CSS Text Shadow Generator](#).

Here you see how black text with a 4 pixel rgb(196, 170, 176) colored shadow looks like.

```
.shadow{ text-shadow: 4px 4px 2px rgb(196, 170, 176) }
```

## Border

The CSS property to change the border of an element to XYZ 44.9761, 43.6198, 47.1233 is called "border". The border property can be set on classes, ids or directly on the HTML element.

This example shows the color as border, it can be applied via the CSS property "border" or "border-color".

```
.border, #border, table{ border:4px solid rgb(196, 170, 176) }
```



If only the border color should be changed use the property `border-color`.

```
.border{ border-color:rgb(196, 170, 176) }
```

If you want to add a box shadow in that color use:

Here you see how a box with a 4 pixel `rgb(196, 170, 176)` colored shadow looks like.

```
.boxshadow{ -moz-box-shadow:4px 4px 4px  
4px rgb(196, 170, 176); -webkit-box-  
shadow:4px 4px 4px 4px rgb(196, 170, 176);  
box-shadow:4px 4px 4px 4px rgb(196, 170,  
176) }
```

# Background

The CSS property to change the background color of an element to XYZ 44.9761, 43.6198, 47.1233 is called "background". The background property can be set on classes, ids or directly on the HTML element.

```
.background, #background, body{  
background: rgb(196, 170, 176) }
```

If only the background color should be changed can be used:

```
.background{ background-color: rgb(196,  
170, 176) }
```

This example shows the color as background, it is applied via the CSS property "background".

To optimize and compress your CSS code, you can use our [online CSS compressor and optimizer](#) based on csstidy. If you want to create a linear or radial gradient as background or border, check our [CSS Gradient Generator](#).

Hey! You found this booklet interesting? Support Converting Colors with the new Membership Option!

The pro membership hides all ads, plus gives you double the colors in the color bucket, and more awesome pro features!

**[Learn more, Memberships starting at \\$2.50/m!](#)**

**Follow me  
on Twitter!**

@ConvertingColor