

Converting Colors

XYZ(44.9536, 24.3028, 16.6846)

Have a look what the booklet for
XYZ(44.9536, 24.3028, 16.6846)
contains.

XYZ(44.9773, 24.3181, 16.7913)	3
<i>Conversions</i>	4
<i>Details</i>	6
<i>Harmonies</i>	12
<i>Previews</i>	24
<i>Color Blindness Simulation</i>	28
<i>CSS Examples</i>	31

Color

**XYZ(44.9773, 24.3181,
16.7913)**

Conversions

Conversions Part 1

Format	Color
Hex	FF2E6D
RGB	255, 46, 109
RGB Percent	100%, 18%, 43%
CMY	0.0000, 0.8195, 0.5725
CMYK	0.00, 0.82, 0.57, 0.00
HSL	342°, 100%, 59%
HSV	342°, 82%, 100%
XYZ	44.9773, 24.3181, 16.7913
YIQ	115.6730, 104.3410, 63.9010

Conversions

Conversions Part 2

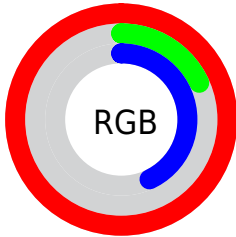
Format	Color
R _Y B	255, 46, 109
Decimal	16723565
CIE Lab	56.40, 77.54, 17.58
CIE LCh	56, 79.511, 12.777
Yxy	24.3181, 0.5225, 0.2825
Android (android.graphics.Color)	4294913645 (0xFFFF2E6D)
YUV	115.6730, -3.2898, 122.1898
Hunter-Lab	49.3134, 76.5062, 14.3310

Details

The XYZ color **44.9773, 24.3181, 16.7913** is a dark color, and the websafe version is hex **FF3366**. The color can be described as dark washed rose. A complement of this color would be **46.4039, 75.9075, 62.0858**, and the grayscale version is **16.4906, 17.3494, 18.8935**.

A 20% lighter version of the original color is **53.7159, 36.0595, 37.3868**, and **22.3554, 11.4242, 5.5843** is the 20% darker color. If you saturate the color by 10%, you get **43.3956, 22.5373, 12.0025**, and if you desaturate by 10%, it is **47.3450, 27.3602, 22.8013**.

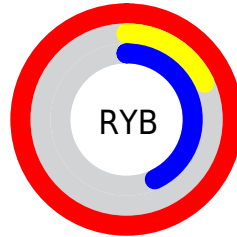
Distribution



Red (100%)

Green (18%)

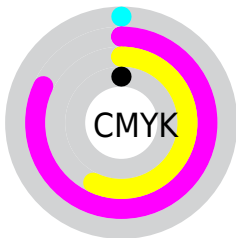
Blue (43%)



Red (100%)

Yellow (18%)

Blue (43%)

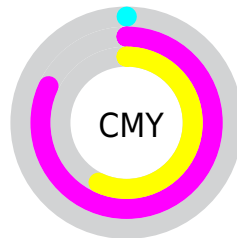


Cyan (0%)

Magenta (82%)

Yellow (57%)

Black (0%)



Cyan (0%)

Magenta (82%)

Yellow (57%)

Brightness & Saturation Gradients

These gradients show how the XYZ color 44.9773, 24.3181, 16.7913 changes by changing the brightness by 10 percent. The first figure shows a shift by +10% for each color and the second figure -10%.

Similar to the brightness gradients but the following saturation gradients show a change of the XYZ color 44.9773, 24.3181, 16.7913 by changing the saturation by 10% instead.

■ 44.9773, 24.3181,
16.7913

■ 44.9773, 24.3181,
16.7913

357.4669,
274.4248, 245.9699

■ 31.6407, 15.5698,
9.9254

■ 81.9236, 50.5488,
38.7523

■ 21.2415, 9.2202,
5.2446

■ 106.2641, 68.7999,
54.6845

■ 13.4141, 4.8851,
2.3302

■ 135.0033, 90.9875,
74.4760

■ 7.7933, 2.1800,
0.7481

■ 168.5065,
117.4958, 98.5451

■ 4.0136, 0.7091,
0.0000

■ 207.1391,
148.7093, 127.3106

■ 1.7099, 0.0000,
0.0000

251.2665,

■ 0.4624, 0.0000,

185.0123, 161.1908

0.0000

301.2539,
226.7894, 200.6044

■ 0.0000, 0.0000,
0.0000

■ 44.9773, 24.3181,
16.7913

■ 44.9773, 24.3181,
16.7913

■ 43.3956, 22.5373,
12.0025

■ 47.3450, 27.3602,
22.8013

■ 42.5741, 21.7936,
8.9561

■ 50.5987, 31.8458,
30.1189

■ 54.8245, 37.9314,
38.8222

■ 60.0975, 45.7517,
48.9826

■ 66.4849, 55.4273,
60.6660

74.0481, 67.0678,
73.9339

82.8441, 80.7743,
88.8446

92.9260, 96.6409,
105.4530

95.0498, 99.9999,
108.9000

Harmonies

Analogous

The Analogous color harmony consists of three colors that are next to each other on the color wheel.



44.4266, 24.3181, 44.4617



44.9773, 24.3181, 16.7913



38.6565, 24.3181, 4.8377

Triad

The Triadic color harmony groups three colors that are evenly spaced from another and form a triangle on the color wheel.



44.9773, 24.3181, 16.7913



13.0721, 24.3181, 3.9979



18.2675, 24.3181, 110.1647

Complementary

The Complementary color scheme is a pair of colors which are on the opposite of each other on the color wheel.



44.9773, 24.3181, 16.7913



46.4039, 75.9075, 62.0858

Split Complementary

Split-complementary colors differ from the complementary color scheme. The scheme consists of three colors, the original color and two neighbors of the complement color.



12.4204, 24.3181, 77.8451



44.9773, 24.3181, 16.7913



10.0129, 24.3181, 14.1453

Square

The Square scheme is like the rectangle color scheme, but the four colors are evenly spaced on the color wheel.



44.9773, 24.3181, 16.7913



19.4227, 24.3181, 1.4397



9.8112, 24.3181, 39.3174



27.2448, 24.3181, 112.8138

Rectangle

The Rectangle color scheme consists of four colors that form a rectangle on the color wheel.



44.9773, 24.3181, 16.7913



32.1735, 24.3181, 2.1589



9.8112, 24.3181, 39.3174



15.9375, 24.3181, 101.7596

Sweetspot

The Sweet Spot groups the original color and five complimentary colors.



44.9779, 24.3196, 16.7917



71.6160, 63.3070, 69.7202



39.9699, 19.9716, 96.3555



14.7583, 12.6722, 13.9230



0.0000, 0.0000, 0.0000



20.3446, 21.4041, 23.3091

Same Dimension

The Same Dimension uses a secret algorithm to generate beautiful new colors.



44.9779, 24.3196, 16.7917



42.7586, 21.9560, 9.6540



44.9295, 27.8497, 5.5943



18.2347, 18.0772, 19.8529



22.3033, 11.4106, 4.9818



2.2175, 1.1294, 0.7268

Inverse Universe

The Inverse Universe completely reimagines the original color for something new.



44.9779, 24.3196, 16.7917



42.7586, 21.9560, 9.6540



43.9096, 57.2655, 103.3463



18.2347, 18.0772, 19.8529



22.3033, 11.4106, 4.9818



2.2175, 1.1294, 0.7268

Previews

White Background



This preview shows how the XYZ color 44.9773, 24.3181, 16.7913 looks on a white background.

Color Contrast Check

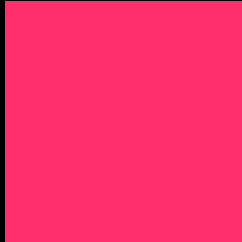
Large Text (above 18pt) WCAG AA ✓ Pass

Any Text WCAG AA × Fail

Large Text (above 18pt) WCAG AAA × Fail

Any Text WCAG AAA × Fail

Black Background



This preview shows how the XYZ color 44.9773, 24.3181, 16.7913 looks on a black background.

Color Contrast Check

Large Text (above 18pt) WCAG AA ✓ Pass

Any Text WCAG AA ✓ Pass

Large Text (above 18pt) WCAG AAA ✓ Pass

Any Text WCAG AAA × Fail

If you want to check with other color combinations, try the [Color Contrast Checker](#).

XYZ 44.9773, 24.3181, 16.7913

Background



This preview shows how black text looks on a background with the XYZ color 44.9773, 24.3181, 16.7913.

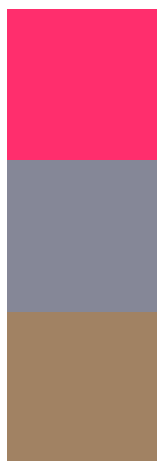


This preview shows how white text looks on a background with the XYZ color 44.9773, 24.3181, 16.7913.

Color Blindness Simulation

Color vision deficiency is a very complex topic, and I could not describe the different causes any better than Wikipedia does, so if you want to learn more, you should check out their [article about color blindness](#).

Dichromacy



Original Color

44.9773, 24.3181, 16.7913

Protanopia

23.9228, 24.5489, 32.7557

Deuteranopia

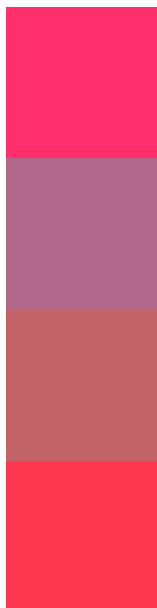
24.9327, 24.4432, 15.2083



Tritanopia

42.8876, 24.3368, 6.7120

Trichromacy



Original Color

44.9773, 24.3181, 16.7913

Protanomaly

27.4256, 20.8252, 25.8667

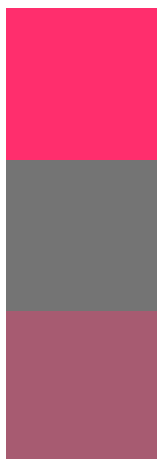
Deuteranomaly

29.4157, 21.5051, 15.4325

Tritanomaly

43.5674, 24.2592, 9.5940

Monochromacy



Original Color

44.9773, 24.3181, 16.7913

Achromatopsia

16.6002, 17.4647, 19.0191

Achromatomaly

22.6581, 16.8899, 17.6887

CSS Examples

Text

The CSS property to change the color of the text to XYZ 44.9773, 24.3181, 16.7913 is called "color". The color property can be set on classes, ids or directly on the HTML element.

This example shows how text in the color `rgb(255, 46, 109)` looks like.

```
.text, #text, p{  
    color:rgb(255, 46, 109)  
}
```

If you want to add a text shadow in that color use the text-shadow property, you can generate a text shadow directly with our [CSS Text Shadow Generator](#).

Here you see how black text with a 4 pixel rgb(255, 46, 109) colored shadow looks like.

```
.shadow{ text-shadow: 4px 4px 2px rgb(255, 46, 109) }
```

Border

The CSS property to change the border of an element to XYZ 44.9773, 24.3181, 16.7913 is called "border". The border property can be set on classes, ids or directly on the HTML element.

This example shows the color as border, it can be applied via the CSS property "border" or "border-color".

```
.border, #border, table{ border:4px solid rgb(255, 46, 109) }
```


If only the border color should be changed use the property border-color.

```
.border{ border-color:rgb(255, 46, 109) }
```

If you want to add a box shadow in that color use:

Here you see how a box with a 4 pixel rgb(255, 46, 109) colored shadow looks like.

```
.boxshadow{ -moz-box-shadow:4px 4px 4px  
4px rgb(255, 46, 109); -webkit-box-  
shadow:4px 4px 4px 4px rgb(255, 46, 109);  
box-shadow:4px 4px 4px 4px rgb(255, 46,  
109) }
```

Background

The CSS property to change the background color of an element to XYZ 44.9773, 24.3181, 16.7913 is called "background". The background property can be set on classes, ids or directly on the HTML element.

```
.background, #background, body{  
background: rgb(255, 46, 109) }
```

If only the background color should be changed can be used:

```
.background{ background-color: rgb(255, 46,  
109) }
```

This example shows the color as background, it is applied via the CSS property "background".

To optimize and compress your CSS code, you can use our [online CSS compressor and optimizer](#) based on csstidy. If you want to create a linear or radial gradient as background or border, check our [CSS Gradient Generator](#).

Hey! You found this booklet interesting? Support Converting Colors with the new Membership Option!

The pro membership hides all ads, plus gives you double the colors in the color bucket, and more awesome pro features!

[Learn more, Memberships starting at \\$2.50/m!](#)

**Follow me
on Twitter!**

@ConvertingColor