

Converting Colors

XYZ(44.9888, 45.0239, 46.9398)

Have a look what the booklet for
XYZ(44.9888, 45.0239, 46.9398)
contains.

XYZ(45.0602, 45.0925, 46.8862)	3
<i>Conversions</i>	4
<i>Details</i>	6
<i>Harmonies</i>	12
<i>Previews</i>	24
<i>Color Blindness Simulation</i>	28
<i>CSS Examples</i>	31

Color

**XYZ(45.0602, 45.0925,
46.8862)**

Conversions

Conversions Part 1

Format	Color
Hex	C1AFAF
RGB	193, 175, 175
RGB Percent	76%, 69%, 69%
CMY	0.2431, 0.3137, 0.3137
CMYK	0.00, 0.09, 0.09, 0.24
HSL	0°, 13%, 72%
HSV	0°, 9%, 76%
XYZ	45.0602, 45.0925, 46.8862
YIQ	180.3820, 10.7280, 3.8160

Conversions

Conversions Part 2

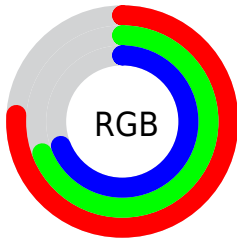
Format	Color
R_{YB}	193, 175, 175
Decimal	12693423
CIE Lab	72.95, 6.45, 2.34
CIE LCh	73, 6.865, 19.916
Yxy	45.0925, 0.3288, 0.3290
Android (android.graphics.Color)	4290883503 (0xFFC1AFAF)
YUV	180.3820, -2.6533, 11.0660
Hunter-Lab	67.1509, 2.2644, 5.6081

Details

The XYZ color **45.0602, 45.0925, 46.8862** is a light color, and the websafe version is hex **CCCCCC**. A complement of this color would be **46.3748, 51.1035, 57.8726**, and the grayscale version is **43.5985, 45.8690, 49.9514**.

A 20% lighter version of the original color is **82.2832, 83.1890, 86.5832**, and **21.3056, 21.0849, 21.6858** is the 20% darker color. If you saturate the color by 10%, you get **39.8076, 37.4068, 36.4421**, and if you desaturate by 10%, it is **51.1230, 53.9640, 58.9382**.

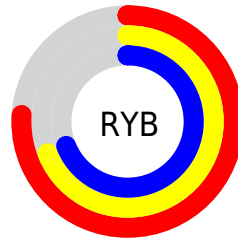
Distribution



Red (76%)

Green (69%)

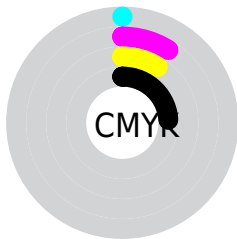
Blue (69%)



Red (76%)

Yellow (69%)

Blue (69%)

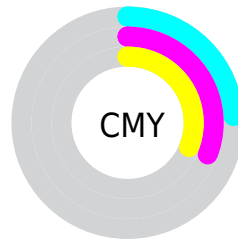


Cyan (0%)

Magenta (9%)

Yellow (9%)

Black (24%)



Cyan (24%)

Magenta (31%)

Yellow (31%)

Brightness & Saturation Gradients

These gradients show how the XYZ color 45.0602, 45.0925, 46.8862 changes by changing the brightness by 10 percent. The first figure shows a shift by +10% for each color and the second figure -10%.

Similar to the brightness gradients but the following saturation gradients show a change of the XYZ color 45.0602, 45.0925, 46.8862 by changing the saturation by 10% instead.

■ 45.0602, 45.0925,
46.8862

■ 45.0602, 45.0925,
46.8862

357.7969,
367.1481, 390.7407

■ 31.7063, 31.5303,
32.5920

■ 82.0472, 82.8592,
86.8919

■ 21.2917, 21.0030,
21.5455

106.4111,
107.8325, 113.4405

■ 13.4511, 13.1262,
13.3282

135.1757,
137.3782, 144.9110

■ 7.8190, 7.5155,
7.5216

168.7064,
171.8809, 181.7220

■ 4.0302, 3.7865,
3.7070

207.3685,
211.7248, 224.2919

■ 1.7192, 1.5549,
1.4660

251.5274,

■ 0.4683, 0.3269,

257.2944, 273.0392

0.1924

301.5484,
308.9740, 328.3827

■ 0.0000, 0.0000,
0.0000

■ 45.0602, 45.0925,
46.8862

■ 45.0602, 45.0925,
46.8862

■ 39.8076, 37.4068,
36.4421

■ 51.1230, 53.9640,
58.9382

■ 35.3273, 30.8510,
27.5351

■ 58.0243, 64.0621,
72.6588

■ 31.5841, 25.3736,
20.0936

■ 65.7956, 75.4332,
88.1094

■ 28.5385, 20.9170,
14.0392

■ 74.4658, 88.1196,
105.3471

■ 26.1474, 17.4180,
9.2861

■ 75.8026, 90.0776,
107.9992

■ 24.3628, 14.8065,
5.7389

■ 23.1303, 13.0029,
3.2893

■ 22.3858, 11.9132,
1.8098

■ 22.0143, 11.3694,
1.0716

Harmonies

Analogous

The Analogous color harmony consists of three colors that are next to each other on the color wheel.



45.1659, 45.0925, 50.2616



45.0602, 45.0925, 46.8862



44.3586, 45.0925, 44.2243

Triad

The Triadic color harmony groups three colors that are evenly spaced from another and form a triangle on the color wheel.



45.0602, 45.0925, 46.8862



41.1217, 45.0925, 44.9738



42.4572, 45.0925, 55.8798

Complementary

The Complementary color scheme is a pair of colors which are on the opposite of each other on the color wheel.



45.0602, 45.0925, 46.8862



46.3748, 51.1035, 57.8726

Split Complementary

Split-complementary colors differ from the complementary color scheme. The scheme consists of three colors, the original color and two neighbors of the complement color.



41.3937, 45.0925, 54.3173



45.0602, 45.0925, 46.8862



40.6322, 45.0925, 47.9527

Square

The Square scheme is like the rectangle color scheme, but the four colors are evenly spaced on the color wheel.



45.0602, 45.0925, 46.8862



42.0796, 45.0925, 43.1564



40.7308, 45.0925, 51.3784



43.6481, 45.0925, 55.5615

Rectangle

The Rectangle color scheme consists of four colors that form a rectangle on the color wheel.



45.0602, 45.0925, 46.8862



43.6545, 45.0925, 43.1624



40.7308, 45.0925, 51.3784



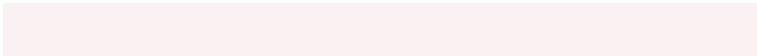
42.0734, 45.0925, 55.5544

Sweetspot

The Sweet Spot groups the original color and five complimentary colors.



45.0615, 45.0945, 46.8872



87.3488, 90.4858, 97.1838



46.9486, 45.8483, 56.8280



18.5482, 19.1327, 20.4694



92.9021, 97.7402, 106.4391



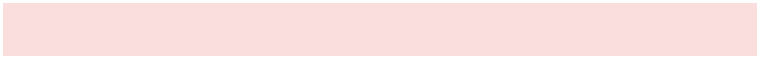
19.4759, 20.4902, 22.3138

Same Dimension

The Same Dimension uses a secret algorithm to generate beautiful new colors.



45.0615, 45.0945, 46.8872



78.8604, 78.0653, 80.3081



46.8714, 48.7143, 47.4905



10.0734, 10.0782, 10.4762



14.6278, 7.5414, 0.6847



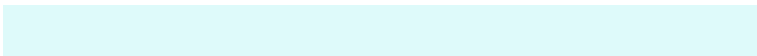
0.6321, 0.3259, 0.0296

Inverse Universe

The Inverse Universe completely reimagines the original color for something new.



46.3748, 51.1035, 57.8726



81.6429, 90.7964, 103.5827



44.4460, 47.2459, 57.2296



10.3684, 11.4282, 12.9442



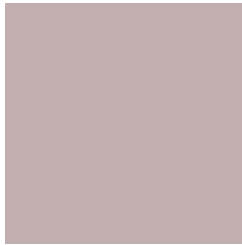
19.0809, 27.9184, 37.9397



0.8245, 1.2064, 1.6393

Previews

White Background



This preview shows how the XYZ color 45.0602, 45.0925, 46.8862 looks on a white background.

Color Contrast Check

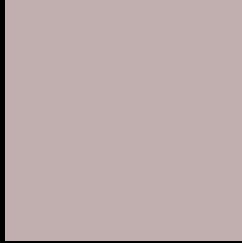
Large Text (above 18pt) WCAG AA × Fail

Any Text WCAG AA × Fail

Large Text (above 18pt) WCAG AAA × Fail

Any Text WCAG AAA × Fail

Black Background



This preview shows how the XYZ color 45.0602, 45.0925, 46.8862 looks on a black background.

Color Contrast Check

Large Text (above 18pt) WCAG AA ✓ Pass

Any Text WCAG AA ✓ Pass

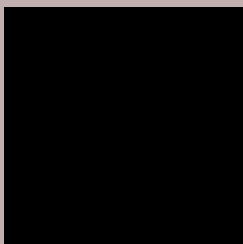
Large Text (above 18pt) WCAG AAA ✓ Pass

Any Text WCAG AAA ✓ Pass

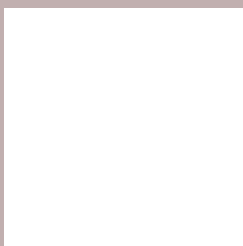
If you want to check with other color combinations, try the [Color Contrast Checker](#).

XYZ 45.0602, 45.0925, 46.8862

Background



This preview shows how black text looks on a background with the XYZ color 45.0602, 45.0925, 46.8862.



This preview shows how white text looks on a background with the XYZ color 45.0602, 45.0925,

46.8862.

Color Blindness Simulation

Color vision deficiency is a very complex topic, and I could not describe the different causes any better than Wikipedia does, so if you want to learn more, you should check out their [article about color blindness](#).

Dichromacy



Original Color

45.0602, 45.0925, 46.8862

Protanopia

43.3846, 45.0824, 48.0101

Deuteranopia

45.9701, 44.9881, 46.8181



Tritanopia

46.4189, 45.0771, 53.2679

Trichromacy



Original Color

45.0602, 45.0925, 46.8862

Protanomaly

44.0521, 45.1437, 47.4661

Deuteranomaly

45.6389, 45.1030, 46.8578

Tritanomaly

45.9314, 45.1603, 51.0957

Monochromacy



Original Color

45.0602, 45.0925, 46.8862

Achromatopsia

43.3819, 45.6411, 49.7032

Achromatomaly

43.9639, 45.3694, 48.5595

CSS Examples

Text

The CSS property to change the color of the text to XYZ 45.0602, 45.0925, 46.8862 is called "color". The color property can be set on classes, ids or directly on the HTML element.

This example shows how text in the color `rgb(193, 175, 175)` looks like.

```
.text, #text, p{  
    color:rgb(193, 175, 175)  
}
```

If you want to add a text shadow in that color use the text-shadow property, you can generate a text shadow directly with our [CSS Text Shadow Generator](#).

Here you see how black text with a 4 pixel rgb(193, 175, 175) colored shadow looks like.

```
.shadow{ text-shadow: 4px 4px 2px rgb(193, 175, 175) }
```

Border

The CSS property to change the border of an element to XYZ 45.0602, 45.0925, 46.8862 is called "border". The border property can be set on classes, ids or directly on the HTML element.

This example shows the color as border, it can be applied via the CSS property "border" or "border-color".

```
.border, #border, table{ border:4px solid rgb(193, 175, 175) }
```


If only the border color should be changed use the property `border-color`.

```
.border{ border-color:rgb(193, 175, 175) }
```

If you want to add a box shadow in that color use:

Here you see how a box with a 4 pixel `rgb(193, 175, 175)` colored shadow looks like.

```
.boxshadow{ -moz-box-shadow:4px 4px 4px  
4px rgb(193, 175, 175); -webkit-box-  
shadow:4px 4px 4px 4px rgb(193, 175, 175);  
box-shadow:4px 4px 4px 4px rgb(193, 175,  
175) }
```

Background

The CSS property to change the background color of an element to XYZ 45.0602, 45.0925, 46.8862 is called "background". The background property can be set on classes, ids or directly on the HTML element.

```
.background, #background, body{  
background: rgb(193, 175, 175) }
```

If only the background color should be changed can be used:

```
.background{ background-color: rgb(193,  
175, 175) }
```

This example shows the color as background, it is applied via the CSS property "background".

To optimize and compress your CSS code, you can use our [online CSS compressor and optimizer](#) based on csstidy. If you want to create a linear or radial gradient as background or border, check our [CSS Gradient Generator](#).

Hey! You found this booklet interesting? Support Converting Colors with the new Membership Option!

The pro membership hides all ads, plus gives you double the colors in the color bucket, and more awesome pro features!

[Learn more, Memberships starting at \\$2.50/m!](#)

**Follow me
on Twitter!**

@ConvertingColor