

Converting Colors

XYZ(45.0614, 43.9619, 48.9253)

Have a look what the booklet for
XYZ(45.0614, 43.9619, 48.9253)
contains.

XYZ(44.9477, 43.8498, 48.7427)	3
<i>Conversions</i>	4
<i>Details</i>	6
<i>Harmonies</i>	12
<i>Previews</i>	24
<i>Color Blindness Simulation</i>	28
<i>CSS Examples</i>	31

Color

**XYZ(44.9477, 43.8498,
48.7427)**

Conversions

Conversions Part 1

Format	Color
Hex	C2ABB3
RGB	194, 171, 179
RGB Percent	76%, 67%, 70%
CMY	0.2392, 0.3294, 0.2980
CMYK	0.00, 0.12, 0.08, 0.24
HSL	339°, 16%, 72%
HSV	339°, 12%, 76%
XYZ	44.9477, 43.8498, 48.7427
YIQ	178.7890, 11.1400, 7.3640

Conversions

Conversions Part 2

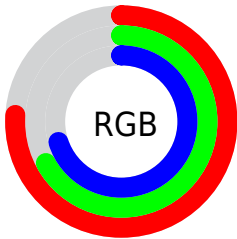
Format	Color
RYB	194, 171, 179
Decimal	12757939
CIELab	72.13, 9.68, -1.05
CIELCh	72, 9.742, 353.806
Yxy	43.8498, 0.3268, 0.3188
Android (android.graphics.Color)	4290948019 (0xFFC2ABB3)
YUV	178.7890, 0.1040, 13.3400
Hunter-Lab	66.2192, 5.2772, 2.7112

Details

The XYZ color **44.9477, 43.8498, 48.7427** is a light color, and the websafe version is hex **999999**. A complement of this color would be **44.9509, 50.7878, 53.8906**, and the grayscale version is **42.7317, 44.9571, 48.9583**.

A 20% lighter version of the original color is **81.9754, 80.9001, 89.8920**, and **21.1779, 20.2755, 22.5360** is the 20% darker color. If you saturate the color by 10%, you get **40.3273, 36.5637, 41.1756**, and if you desaturate by 10%, it is **50.2259, 52.2624, 57.1096**.

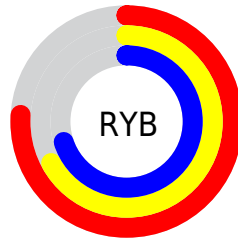
Distribution



Red (76%)

Green (67%)

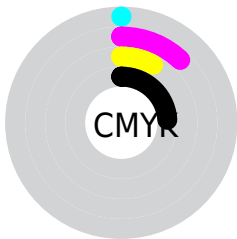
Blue (70%)



Red (76%)

Yellow (67%)

Blue (70%)

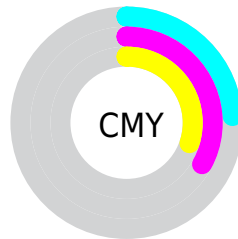


Cyan (0%)

Magenta (12%)

Yellow (8%)

Black (24%)



Cyan (24%)

Magenta (33%)

Yellow (30%)

Brightness & Saturation Gradients

These gradients show how the XYZ color 44.9477, 43.8498, 48.7427 changes by changing the brightness by 10 percent. The first figure shows a shift by +10% for each color and the second figure -10%.

Similar to the brightness gradients but the following saturation gradients show a change of the XYZ color 44.9477, 43.8498, 48.7427 by changing the saturation by 10% instead.

■ 44.9477, 43.8498,
48.7427

■ 44.9477, 43.8498,
48.7427

357.3490,
362.0950, 398.3218

■ 31.6173, 30.5524,
34.0513

■ 81.8795, 80.9917,
89.6862

■ 21.2235, 20.2583,
22.6553

106.2116,
105.6050, 116.7754

■ 13.4009, 12.5829,
14.1363

134.9417,
134.7591, 148.8342

■ 7.7841, 7.1420,
8.0757

168.4351,
168.8384, 186.2812

■ 4.0077, 3.5511,
4.0549

207.0571,
208.2272, 229.5349

■ 1.7065, 1.4257,
1.6555

251.1732,

■ 0.4603, 0.2356,

253.3100, 279.0139

0.3300

301.1487,
304.4711, 335.1367

■ 0.0000, 0.0000,
0.0000

■ 44.9477, 43.8498,
48.7427

■ 44.9477, 43.8498,
48.7427

■ 40.3273, 36.5637,
41.1756

■ 50.2259, 52.2624,
57.1096

■ 36.3346, 30.3504,
34.3812

■ 56.1830, 61.8408,
66.2967

■ 32.9423, 25.1603,
28.3348

■ 62.8440, 72.6294,
76.3272

■ 30.1200, 20.9380,
23.0092

■ 70.2313, 84.6685,
87.2224

■ 27.8342, 17.6223,
18.3756

■ 74.0761, 89.4166,
97.5730

■ 26.0479, 15.1452,
14.4027

■ 76.0463, 90.2046,
107.9478

■ 24.7189, 13.4290,
11.0568

■ 76.0584, 90.2094,
108.0112

■ 23.7976, 12.3810,
8.2999

■ 23.2754, 11.8803,
6.4494

Harmonies

Analogous

The Analogous color harmony consists of three colors that are next to each other on the color wheel.



44.3196, 43.8498, 53.3758



44.9477, 43.8498, 48.7427



44.6810, 43.8498, 44.1333

Triad

The Triadic color harmony groups three colors that are evenly spaced from another and form a triangle on the color wheel.



44.9477, 43.8498, 48.7427



40.3970, 43.8498, 39.8262



39.8129, 43.8498, 55.5461

Complementary

The Complementary color scheme is a pair of colors which are on the opposite of each other on the color wheel.



44.9477, 43.8498, 48.7427



44.9509, 50.7878, 53.8906

Split Complementary

Split-complementary colors differ from the complementary color scheme. The scheme consists of three colors, the original color and two neighbors of the complement color.



38.8125, 43.8498, 51.5485



44.9477, 43.8498, 48.7427



39.1434, 43.8498, 42.5248

Square

The Square scheme is like the rectangle color scheme, but the four colors are evenly spaced on the color wheel.



44.9477, 43.8498, 48.7427



42.0249, 43.8498, 39.1849



38.5707, 43.8498, 46.7610



41.3329, 43.8498, 57.4689

Rectangle

The Rectangle color scheme consists of four colors that form a rectangle on the color wheel.



44.9477, 43.8498, 48.7427



44.0351, 43.8498, 41.6661



38.5707, 43.8498, 46.7610



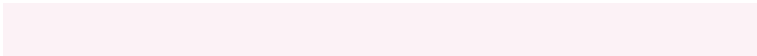
39.4064, 43.8498, 54.3881

Sweetspot

The Sweet Spot groups the original color and five complimentary colors.



44.9489, 43.8517, 48.7436



88.7787, 91.1390, 99.9914



44.5396, 43.4558, 57.0798



19.2762, 19.6943, 21.6367



0.0000, 0.0000, 0.0000



20.3446, 21.4041, 23.3091

Same Dimension

The Same Dimension uses a secret algorithm to generate beautiful new colors.



44.9489, 43.8517, 48.7436



79.3469, 76.1398, 84.9341



44.8234, 44.8577, 44.8263



10.2146, 10.1344, 11.2205



15.3380, 7.8249, 4.4259



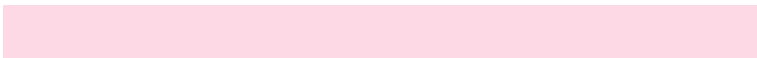
0.6955, 0.3512, 0.3640

Inverse Universe

The Inverse Universe completely reimagines the original color for something new.



44.9489, 43.8517, 48.7436



79.3469, 76.1398, 84.9341



45.0664, 49.6198, 58.2418



10.2146, 10.1344, 11.2205



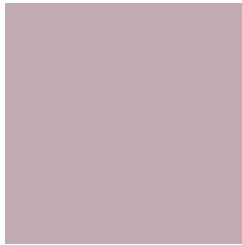
15.3380, 7.8249, 4.4259



0.6955, 0.3512, 0.3640

Previews

White Background



This preview shows how the XYZ color 44.9477, 43.8498, 48.7427 looks on a white background.

Color Contrast Check

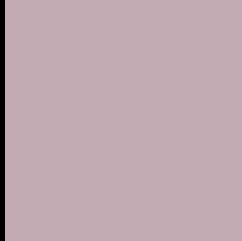
Large Text (above 18pt) WCAG AA × Fail

Any Text WCAG AA × Fail

Large Text (above 18pt) WCAG AAA × Fail

Any Text WCAG AAA × Fail

Black Background



This preview shows how the XYZ color 44.9477, 43.8498, 48.7427 looks on a black background.

Color Contrast Check

Large Text (above 18pt) WCAG AA ✓ Pass

Any Text WCAG AA ✓ Pass

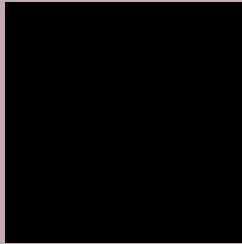
Large Text (above 18pt) WCAG AAA ✓ Pass

Any Text WCAG AAA ✓ Pass

If you want to check with other color combinations, try the [Color Contrast Checker](#).

XYZ 44.9477, 43.8498, 48.7427

Background



This preview shows how black text looks on a background with the XYZ color 44.9477, 43.8498, 48.7427.



This preview shows how white text looks on a background with the XYZ color 44.9477, 43.8498,

Color Blindness Simulation

Color vision deficiency is a very complex topic, and I could not describe the different causes any better than Wikipedia does, so if you want to learn more, you should check out their [article about color blindness](#).

Dichromacy



Original Color

44.9477, 43.8498, 48.7427

Protanopia

42.5592, 44.0118, 50.5080

Deuteranopia

44.6919, 43.7179, 48.7307



Tritanopia

45.5321, 43.8122, 51.4042

Trichromacy



Original Color

44.9477, 43.8498, 48.7427

Protanomaly

43.2437, 43.7986, 49.8909

Deuteranomaly

44.6919, 43.7179, 48.7307

Tritanomaly

45.3239, 43.7290, 50.3077

Monochromacy



Original Color

44.9477, 43.8498, 48.7427

Achromatopsia

42.8472, 45.0786, 49.0906

Achromatomaly

43.4292, 44.4957, 48.9474

CSS Examples

Text

The CSS property to change the color of the text to XYZ 44.9477, 43.8498, 48.7427 is called "color". The color property can be set on classes, ids or directly on the HTML element.

This example shows how text in the color `rgb(194, 171, 179)` looks like.

```
.text, #text, p{  
    color:rgb(194, 171, 179)  
}
```

If you want to add a text shadow in that color use the text-shadow property, you can generate a text shadow directly with our [CSS Text Shadow Generator](#).

Here you see how black text with a 4 pixel rgb(194, 171, 179) colored shadow looks like.

```
.shadow{ text-shadow: 4px 4px 2px rgb(194, 171, 179) }
```

Border

The CSS property to change the border of an element to XYZ 44.9477, 43.8498, 48.7427 is called "border". The border property can be set on classes, ids or directly on the HTML element.

This example shows the color as border, it can be applied via the CSS property "border" or "border-color".

```
.border, #border, table{ border:4px solid rgb(194, 171, 179) }
```


If only the border color should be changed use the property `border-color`.

```
.border{ border-color:rgb(194, 171, 179) }
```

If you want to add a box shadow in that color use:

Here you see how a box with a 4 pixel `rgb(194, 171, 179)` colored shadow looks like.

```
.boxshadow{ -moz-box-shadow:4px 4px 4px  
4px rgb(194, 171, 179); -webkit-box-  
shadow:4px 4px 4px 4px rgb(194, 171, 179);  
box-shadow:4px 4px 4px 4px rgb(194, 171,  
179) }
```

Background

The CSS property to change the background color of an element to XYZ 44.9477, 43.8498, 48.7427 is called "background". The background property can be set on classes, ids or directly on the HTML element.

```
.background, #background, body{  
background: rgb(194, 171, 179) }
```

If only the background color should be changed can be used:

```
.background{ background-color: rgb(194,  
171, 179) }
```

This example shows the color as background, it is applied via the CSS property "background".

To optimize and compress your CSS code, you can use our [online CSS compressor and optimizer](#) based on csstidy. If you want to create a linear or radial gradient as background or border, check our [CSS Gradient Generator](#).

Hey! You found this booklet interesting? Support Converting Colors with the new Membership Option!

The pro membership hides all ads, plus gives you double the colors in the color bucket, and more awesome pro features!

[Learn more, Memberships starting at \\$2.50/m!](#)

**Follow me
on Twitter!**

@ConvertingColor