

Converting Colors

XYZ(45.0650, 26.9643, 22.6198)

Have a look what the booklet for
XYZ(45.0650, 26.9643, 22.6198)
contains.

XYZ(44.9196, 26.8725, 22.5580)	3
<i>Conversions</i>	4
<i>Details</i>	6
<i>Harmonies</i>	12
<i>Previews</i>	24
<i>Color Blindness Simulation</i>	28
<i>CSS Examples</i>	31

Color

**XYZ(44.9196, 26.8725,
22.5580)**

Conversions

Conversions Part 1

Format	Color
Hex	F74F7E
RGB	247, 79, 126
RGB Percent	97%, 31%, 49%
CMY	0.0314, 0.6902, 0.5059
CMYK	0.00, 0.68, 0.49, 0.03
HSL	343°, 91%, 64%
HSV	343°, 68%, 97%
XYZ	44.9196, 26.8725, 22.5580
YIQ	134.5900, 85.0410, 50.2330

Conversions

Conversions Part 2

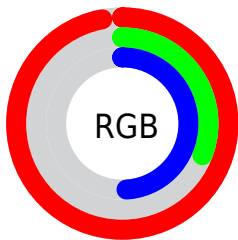
Format	Color
RYB	247, 79, 126
Decimal	16207742
CIELab	58.86, 66.81, 10.72
CIELCh	59, 67.664, 9.115
Yxy	26.8725, 0.4761, 0.2848
Android (android.graphics.Color)	4294397822 (0xFFFF74F7E)
YUV	134.5900, -4.2349, 98.5836
Hunter-Lab	51.8387, 63.9573, 10.4866

Details

The XYZ color **44.9196, 26.8725, 22.5580** is a dark color, and the websafe version is hex **FF6699**. The color can be described as middle washed rose. A complement of this color would be **46.9125, 72.3546, 66.1431**, and the grayscale version is **22.8721, 24.0632, 26.2048**.

A 20% lighter version of the original color is **58.3644, 42.6513, 47.2759**, and **21.3471, 10.8501, 7.9903** is the 20% darker color. If you saturate the color by 10%, you get **42.4092, 23.5286, 16.5521**, and if you desaturate by 10%, it is **48.2970, 31.6239, 29.8605**.

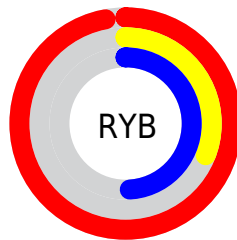
Distribution



Red (97%)

Green (31%)

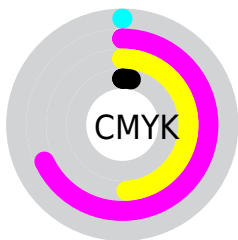
Blue (49%)



Red (97%)

Yellow (31%)

Blue (49%)

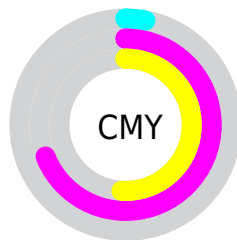


Cyan (0%)

Magenta (68%)

Yellow (49%)

Black (3%)



Cyan (3%)

Magenta (69%)

Yellow (51%)

Brightness & Saturation Gradients

These gradients show how the XYZ color 44.9196, 26.8725, 22.5580 changes by changing the brightness by 10 percent. The first figure shows a shift by +10% for each color and the second figure -10%.

Similar to the brightness gradients but the following saturation gradients show a change of the XYZ color 44.9196, 26.8725, 22.5580 by changing the saturation by 10% instead.

■ 44.9196, 26.8725,
22.5580

■ 44.9196, 26.8725,
22.5580

357.2370,
287.0393, 278.4946

■ 31.5951, 17.4775,
14.0653

■ 81.8376, 54.6792,
48.5805

■ 21.2065, 10.5755,
8.0268

■ 106.1617, 73.8597,
66.9473

■ 13.3883, 5.7822,
4.0241

■ 134.8832, 97.0708,
89.4426

■ 7.7753, 2.7131,
1.6386

■ 168.3673,
124.6969, 116.4849

■ 4.0021, 0.9838,
0.3181

206.9793,
157.1224, 148.4926

■ 1.7033, 0.0000,
0.0000

251.0848,

■ 0.4584, 0.0000,

194.7317, 185.8845

0.0000

301.0489,
237.9092, 229.0790

■ 0.0000, 0.0000,
0.0000

■ 44.9196, 26.8725,
22.5580

■ 44.9196, 26.8725,
22.5580

■ 42.4092, 23.5286,
16.5521

■ 48.2970, 31.6239,
29.8605

■ 40.6754, 21.4284,
11.7588

■ 52.6150, 37.9137,
38.5330


■ 39.6012, 20.3568,
8.0808


■ 57.9415, 45.8627,
48.6445


■ 39.4346, 20.2049,
7.4664

■ 64.3373, 55.5784,
60.2588

■ 71.8582, 67.1593,
73.4354

 80.5561, 80.6963,
88.2309

 90.4796, 96.2747,
104.6987

 92.1676, 98.5141,
108.7651

Harmonies

Analogous

The Analogous color harmony consists of three colors that are next to each other on the color wheel.



43.6884, 26.8725, 48.9230



44.9196, 26.8725, 22.5580



40.1478, 26.8725, 8.7705

Triad

The Triadic color harmony groups three colors that are evenly spaced from another and form a triangle on the color wheel.



44.9196, 26.8725, 22.5580



16.6860, 26.8725, 6.1083



20.2306, 26.8725, 96.7561

Complementary

The Complementary color scheme is a pair of colors which are on the opposite of each other on the color wheel.



44.9196, 26.8725, 22.5580



46.9125, 72.3546, 66.1431

Split Complementary

Split-complementary colors differ from the complementary color scheme. The scheme consists of three colors, the original color and two neighbors of the complement color.



14.9925, 26.8725, 68.9544



44.9196, 26.8725, 22.5580



13.2778, 26.8725, 15.7288

Square

The Square scheme is like the rectangle color scheme, but the four colors are evenly spaced on the color wheel.



44.9196, 26.8725, 22.5580



23.0796, 26.8725, 3.2835



12.7340, 26.8725, 37.1721



28.1726, 26.8725, 102.2795

Rectangle

The Rectangle color scheme consists of four colors that form a rectangle on the color wheel.



44.9196, 26.8725, 22.5580



34.7098, 26.8725, 4.8698



12.7340, 26.8725, 37.1721



18.1491, 26.8725, 89.1892

Sweetspot

The Sweet Spot groups the original color and five complimentary colors.



44.9203, 26.8740, 22.5584



75.5225, 69.5216, 75.9506



43.2454, 24.5062, 90.4461



15.6660, 14.1108, 15.3867



0.0000, 0.0000, 0.0000



20.3446, 21.4041, 23.3091

Same Dimension

The Same Dimension uses a secret algorithm to generate beautiful new colors.



44.9203, 26.8740, 22.5584



44.7316, 24.2136, 15.5166



45.9467, 32.6936, 11.2881



16.6896, 16.5587, 18.1122



20.9076, 10.7065, 4.2216



1.8795, 0.9578, 0.5921

Inverse Universe

The Inverse Universe completely reimagines the original color for something new.



44.9203, 26.8740, 22.5584



44.7316, 24.2136, 15.5166



43.2093, 54.7691, 96.2894



16.6896, 16.5587, 18.1122



20.9076, 10.7065, 4.2216



1.8795, 0.9578, 0.5921

Previews

White Background



This preview shows how the XYZ color 44.9196, 26.8725, 22.5580 looks on a white background.

Color Contrast Check

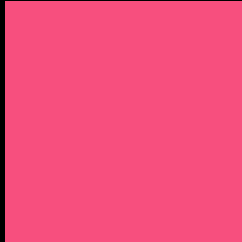
Large Text (above 18pt) WCAG AA ✓ Pass

Any Text WCAG AA × Fail

Large Text (above 18pt) WCAG AAA × Fail

Any Text WCAG AAA × Fail

Black Background



This preview shows how the XYZ color 44.9196, 26.8725, 22.5580 looks on a black background.

Color Contrast Check

Large Text (above 18pt) WCAG AA ✓ Pass

Any Text WCAG AA ✓ Pass

Large Text (above 18pt) WCAG AAA ✓ Pass

Any Text WCAG AAA × Fail

If you want to check with other color combinations, try the [Color Contrast Checker](#).

XYZ 44.9196, 26.8725, 22.5580

Background



This preview shows how black text looks on a background with the XYZ color 44.9196, 26.8725, 22.5580.



This preview shows how white text looks on a background with the XYZ color 44.9196, 26.8725,

Color Blindness Simulation

Color vision deficiency is a very complex topic, and I could not describe the different causes any better than Wikipedia does, so if you want to learn more, you should check out their [article about color blindness](#).

Dichromacy



Original Color

44.9196, 26.8725, 22.5580

Protanopia

26.5175, 27.0768, 37.0864

Deuteranopia

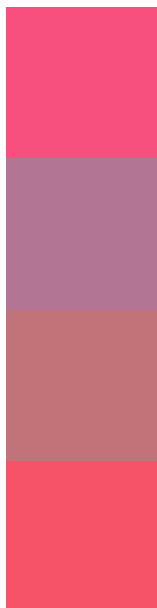
27.3840, 26.8088, 20.8709



Tritanopia

42.8723, 26.8234, 12.8153

Trichromacy



Original Color

44.9196, 26.8725, 22.5580

Protanomaly

30.1838, 24.5600, 31.1667

Deuteranomaly

31.8301, 25.1113, 21.2585

Tritanomaly

43.5980, 26.7788, 15.9677

Monochromacy



Original Color

44.9196, 26.8725, 22.5580

Achromatopsia

23.0288, 24.2281, 26.3844

Achromatomaly

28.2001, 23.1575, 24.8133

CSS Examples

Text

The CSS property to change the color of the text to XYZ 44.9196, 26.8725, 22.5580 is called "color". The color property can be set on classes, ids or directly on the HTML element.

This example shows how text in the color `rgb(247, 79, 126)` looks like.

```
.text, #text, p{  
    color:rgb(247, 79, 126)  
}
```

If you want to add a text shadow in that color use the text-shadow property, you can generate a text shadow directly with our [CSS Text Shadow Generator](#).

Here you see how black text with a 4 pixel rgb(247, 79, 126) colored shadow looks like.

```
.shadow{ text-shadow: 4px 4px 2px rgb(247, 79, 126) }
```

Border

The CSS property to change the border of an element to XYZ 44.9196, 26.8725, 22.5580 is called "border". The border property can be set on classes, ids or directly on the HTML element.

This example shows the color as border, it can be applied via the CSS property "border" or "border-color".

```
.border, #border, table{ border:4px solid rgb(247, 79, 126) }
```


If only the border color should be changed use the property `border-color`.

```
.border{ border-color:rgb(247, 79, 126) }
```

If you want to add a box shadow in that color use:

Here you see how a box with a 4 pixel `rgb(247, 79, 126)` colored shadow looks like.

```
.boxshadow{ -moz-box-shadow:4px 4px 4px  
4px rgb(247, 79, 126); -webkit-box-  
shadow:4px 4px 4px 4px rgb(247, 79, 126);  
box-shadow:4px 4px 4px 4px rgb(247, 79,  
126) }
```

Background

The CSS property to change the background color of an element to XYZ 44.9196, 26.8725, 22.5580 is called "background". The background property can be set on classes, ids or directly on the HTML element.

```
.background, #background, body{  
background: rgb(247, 79, 126) }
```

If only the background color should be changed can be used:

```
.background{ background-color: rgb(247, 79,  
126) }
```

This example shows the color as background, it is applied via the CSS property "background".

To optimize and compress your CSS code, you can use our [online CSS compressor and optimizer](#) based on csstidy. If you want to create a linear or radial gradient as background or border, check our [CSS Gradient Generator](#).

Hey! You found this booklet interesting? Support Converting Colors with the new Membership Option!

The pro membership hides all ads, plus gives you double the colors in the color bucket, and more awesome pro features!

[Learn more, Memberships starting at \\$2.50/m!](#)

**Follow me
on Twitter!**

@ConvertingColor