

Converting Colors

XYZ(45.1010, 41.7654, 41.9199)

Have a look what the booklet for
XYZ(45.1010, 41.7654, 41.9199)
contains.

XYZ(45.1570, 41.9267, 41.7890)	3
<i>Conversions</i>	4
<i>Details</i>	6
<i>Harmonies</i>	12
<i>Previews</i>	24
<i>Color Blindness Simulation</i>	28
<i>CSS Examples</i>	31

Color

**XYZ(45.1570, 41.9267,
41.7890)**

Conversions

Conversions Part 1

Format	Color
Hex	CDA3A6
RGB	205, 163, 166
RGB Percent	80%, 64%, 65%
CMY	0.1961, 0.3608, 0.3490
CMYK	0.00, 0.20, 0.19, 0.20
HSL	356°, 30%, 72%
HSV	356°, 20%, 80%
XYZ	45.1570, 41.9267, 41.7890
YIQ	175.9000, 24.0690, 9.8370

Conversions

Conversions Part 2

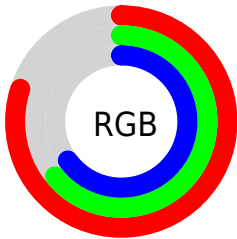
Format	Color
R _Y B	205, 163, 166
Decimal	13476774
CIE Lab	70.82, 15.92, 4.35
CIE LCh	71, 16.507, 15.265
Yxy	41.9267, 0.3504, 0.3253
Android (android.graphics.Color)	4291666854 (0xFFCDA3A6)
YUV	175.9000, -4.8807, 25.5207
Hunter-Lab	64.7508, 11.1713, 7.0609

Details

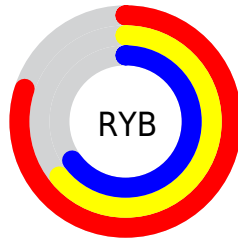
The XYZ color **45.1570, 41.9267, 41.7890** is a light color, and the websafe version is hex **CC9999**. A complement of this color would be **47.5980, 55.7145, 64.1253**, and the grayscale version is **41.2315, 43.3788, 47.2395**.

A 20% lighter version of the original color is **79.3625, 76.6233, 79.0135**, and **21.2994, 19.0678, 18.4774** is the 20% darker color. If you saturate the color by 10%, you get **40.1889, 34.5813, 32.1455**, and if you desaturate by 10%, it is **50.9759, 50.5594, 52.9925**.

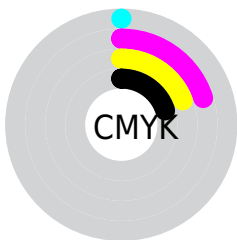
Distribution



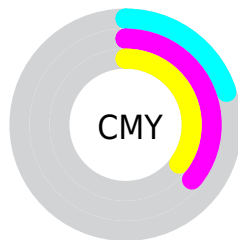
- Red (80%)
- Green (64%)
- Blue (65%)



- Red (80%)
- Yellow (64%)
- Blue (65%)



- Cyan (0%)
- Magenta (20%)
- Yellow (19%)
- Black (20%)





- Cyan (20%)
- Magenta (36%)
- Yellow (35%)

Brightness & Saturation Gradients


These gradients show how the XYZ color 45.1570, 41.9267, 41.7890 changes by changing the brightness by 10 percent. The first figure shows a shift by +10% for each color and the second figure -10%.


Similar to the brightness gradients but the following saturation gradients show a change of the XYZ color 45.1570, 41.9267, 41.7890 by changing the saturation by 10% instead.


 45.1570, 41.9267,
41.7890


 45.1570, 41.9267,
41.7890


358.1820,
354.1790, 369.3813

 31.7829, 29.0439,
28.6118


 82.1916, 78.0887,
79.1468

 21.3505, 19.1140,
18.5443


 106.5828,
102.1366, 104.1645

 13.4944, 11.7527,
11.1680


135.3770,
130.6751, 133.9661

 7.8492, 6.5755,
6.0643

168.9397,
164.0885, 168.9701

 4.0496, 3.1981,
2.8148

207.6362,
202.7612, 209.5951

 1.7302, 1.2360,
1.0009

251.8319,

 0.4751, 0.0908,

247.0776, 256.2596

0.0000

301.8920,
297.4220, 309.3822

■ 0.0000, 0.0000,
0.0000

■ 45.1570, 41.9267,
41.7890

■ 45.1570, 41.9267,
41.7890

■ 40.1889, 34.5813,
32.1455

■ 50.9759, 50.5594,
52.9925

■ 36.0286, 28.4561,
23.9902

■ 57.6793, 60.5307,
65.8182

■ 32.6342, 23.4867,
17.2499

■ 65.3033, 71.8964,
80.3280

■ 29.9589, 19.6004,
11.8439

■ 73.8808, 84.7071,
96.5797

■ 27.9508, 16.7166,
7.6834

■ 78.9870, 91.7192,
108.1483

■ 26.5508, 14.7431,
4.6687

■ 25.6894, 13.5706,
2.6851

■ 25.2606, 13.0127,
1.6184

Harmonies

Analogous

The Analogous color harmony consists of three colors that are next to each other on the color wheel.



45.1707, 41.9267, 49.6011



45.1570, 41.9267, 41.7890



43.6781, 41.9267, 35.7410

Triad

The Triadic color harmony groups three colors that are evenly spaced from another and form a triangle on the color wheel.



45.1570, 41.9267, 41.7890



36.2201, 41.9267, 35.8251



38.5238, 41.9267, 61.8702

Complementary

The Complementary color scheme is a pair of colors which are on the opposite of each other on the color wheel.



45.1570, 41.9267, 41.7890



47.5980, 55.7145, 64.1253

Split Complementary

Split-complementary colors differ from the complementary color scheme. The scheme consists of three colors, the original color and two neighbors of the complement color.



36.2525, 41.9267, 57.2420



45.1570, 41.9267, 41.7890



34.9645, 41.9267, 41.9165

Square

The Square scheme is like the rectangle color scheme, but the four colors are evenly spaced on the color wheel.



45.1570, 41.9267, 41.7890



38.4777, 41.9267, 32.5763



34.9761, 41.9267, 49.7440



41.2547, 41.9267, 61.8259

Rectangle

The Rectangle color scheme consists of four colors that form a rectangle on the color wheel.



45.1570, 41.9267, 41.7890



42.0975, 41.9267, 33.2620



34.9761, 41.9267, 49.7440



37.6841, 41.9267, 60.7879

Sweetspot

The Sweet Spot groups the original color and five complimentary colors.



45.1582, 41.9286, 41.7899



88.1579, 89.7421, 95.7315



48.3399, 43.0910, 63.5277



18.7159, 18.9802, 20.1966



0.0000, 0.0000, 0.0000



20.3446, 21.4041, 23.3091

Same Dimension

The Same Dimension uses a secret algorithm to generate beautiful new colors.



45.1582, 41.9286, 41.7899



69.8662, 62.6071, 60.5062



48.2114, 48.4698, 41.4673



11.2443, 11.2264, 11.8209



15.7388, 8.1061, 1.0774



0.8235, 0.4228, 0.1166

Inverse Universe

The Inverse Universe completely reimagines the original color for something new.



45.1582, 41.9286, 41.7899



69.8662, 62.6071, 60.5062



44.0019, 47.9491, 64.6940



11.2443, 11.2264, 11.8209



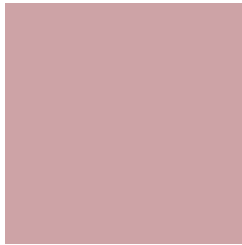
15.7388, 8.1061, 1.0774



0.8235, 0.4228, 0.1166

Previews

White Background



This preview shows how the XYZ color 45.1570, 41.9267, 41.7890 looks on a white background.

Color Contrast Check

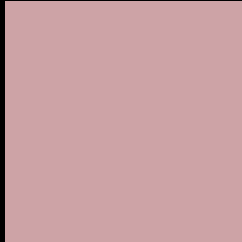
Large Text (above 18pt) WCAG AA × Fail

Any Text WCAG AA × Fail

Large Text (above 18pt) WCAG AAA × Fail

Any Text WCAG AAA × Fail

Black Background



This preview shows how the XYZ color 45.1570, 41.9267, 41.7890 looks on a black background.

Color Contrast Check

Large Text (above 18pt) WCAG AA ✓ Pass

Any Text WCAG AA ✓ Pass

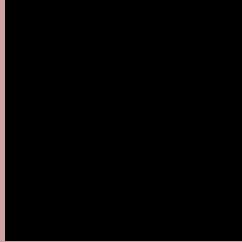
Large Text (above 18pt) WCAG AAA ✓ Pass

Any Text WCAG AAA ✓ Pass

If you want to check with other color combinations, try the [Color Contrast Checker](#).

XYZ 45.1570, 41.9267, 41.7890

Background



This preview shows how black text looks on a background with the XYZ color 45.1570, 41.9267, 41.7890.



This preview shows how white text looks on a background with the XYZ color 45.1570, 41.9267,

Color Blindness Simulation

Color vision deficiency is a very complex topic, and I could not describe the different causes any better than Wikipedia does, so if you want to learn more, you should check out their [article about color blindness](#).

Dichromacy



Original Color

45.1570, 41.9267, 41.7890

Protanopia

40.4257, 42.1745, 44.5379

Deuteranopia

42.7865, 42.0593, 41.4605



Tritanopia

46.0139, 42.0185, 45.7296

Trichromacy



Original Color

45.1570, 41.9267, 41.7890

Protanomaly

41.8429, 41.8053, 43.4000

Deuteranomaly

43.4537, 41.8594, 41.3867

Tritanomaly

45.7246, 41.9027, 44.2062

Monochromacy



Original Color

45.1570, 41.9267, 41.7890

Achromatopsia

41.2663, 43.4154, 47.2793

Achromatomaly

42.5028, 42.6692, 45.0256

CSS Examples

Text

The CSS property to change the color of the text to XYZ 45.1570, 41.9267, 41.7890 is called "color". The color property can be set on classes, ids or directly on the HTML element.

This example shows how text in the color rgb(205, 163, 166) looks like.

```
.text, #text, p{  
    color:rgb(205, 163, 166)  
}
```

If you want to add a text shadow in that color use the text-shadow property, you can generate a text shadow directly with our [CSS Text Shadow Generator](#).

Here you see how black text with a 4 pixel rgb(205, 163, 166) colored shadow looks like.

```
.shadow{ text-shadow: 4px 4px 2px rgb(205, 163, 166) }
```

Border

The CSS property to change the border of an element to XYZ 45.1570, 41.9267, 41.7890 is called "border". The border property can be set on classes, ids or directly on the HTML element.

This example shows the color as border, it can be applied via the CSS property "border" or "border-color".

```
.border, #border, table{ border:4px solid rgb(205, 163, 166) }
```


If only the border color should be changed use the property `border-color`.

```
.border{ border-color:rgb(205, 163, 166) }
```

If you want to add a box shadow in that color use:

Here you see how a box with a 4 pixel `rgb(205, 163, 166)` colored shadow looks like.

```
.boxshadow{ -moz-box-shadow:4px 4px 4px  
4px rgb(205, 163, 166); -webkit-box-  
shadow:4px 4px 4px 4px rgb(205, 163, 166);  
box-shadow:4px 4px 4px 4px rgb(205, 163,  
166) }
```

Background

The CSS property to change the background color of an element to XYZ 45.1570, 41.9267, 41.7890 is called "background". The background property can be set on classes, ids or directly on the HTML element.

```
.background, #background, body{  
background: rgb(205, 163, 166) }
```

If only the background color should be changed can be used:

```
.background{ background-color: rgb(205,  
163, 166) }
```

This example shows the color as background, it is applied via the CSS property "background".

To optimize and compress your CSS code, you can use our [online CSS compressor and optimizer](#) based on csstidy. If you want to create a linear or radial gradient as background or border, check our [CSS Gradient Generator](#).

Hey! You found this booklet interesting? Support Converting Colors with the new Membership Option!

The pro membership hides all ads, plus gives you double the colors in the color bucket, and more awesome pro features!

[Learn more, Memberships starting at \\$2.50/m!](#)

**Follow me
on Twitter!**

@ConvertingColor