

# Converting Colors

XYZ(45.1069, 43.6363, 39.2700)

Have a look what the booklet for  
XYZ(45.1069, 43.6363, 39.2700)  
contains.

<b>XYZ(45.1617, 43.6105, 39.2951)</b> .....	3
<b><i>Conversions</i></b> .....	4
<b><i>Details</i></b> .....	6
<b><i>Harmonies</i></b> .....	12
<b><i>Previews</i></b> .....	24
<b><i>Color Blindness Simulation</i></b> .....	28
<b><i>CSS Examples</i></b> .....	31

# Color

**XYZ(45.1617, 43.6105,  
39.2951)**

# Conversions

## Conversions Part 1

Format	Color
Hex	CBA9A0
RGB	203, 169, 160
RGB Percent	80%, 66%, 63%
CMY	0.2039, 0.3372, 0.3725
CMYK	0.00, 0.17, 0.21, 0.20
HSL	13°, 29%, 71%
HSV	13°, 21%, 80%
XYZ	45.1617, 43.6105, 39.2951
YIQ	178.1400, 23.1530, 4.4090

# Conversions

## Conversions Part 2

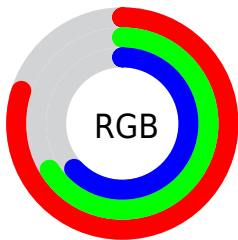
Format	Color
R <sub>Y</sub> B	203, 171, 160
Decimal	13347232
CIE Lab	71.97, 10.99, 9.27
CIE LCh	72, 14.384, 40.150
Yxy	43.6105, 0.3526, 0.3405
Android (android.graphics.Color)	4291537312 (0xFFCBA9A0)
YUV	178.1400, -8.9430, 21.8022
Hunter-Lab	66.0382, 6.5042, 10.9471

# Details

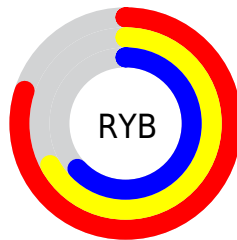
The XYZ color **45.1617, 43.6105, 39.2951** is a light color, and the websafe version is hex **CC9999**. A complement of this color would be **44.5680, 50.3676, 63.8731**, and the grayscale version is **42.4292, 44.6389, 48.6117**.

A 20% lighter version of the original color is **80.1614, 79.4776, 75.4057**, and **21.3343, 20.1226, 17.2276** is the 20% darker color. If you saturate the color by 10%, you get **40.7243, 37.3492, 29.7583**, and if you desaturate by 10%, it is **50.2580, 50.7248, 50.4831**.

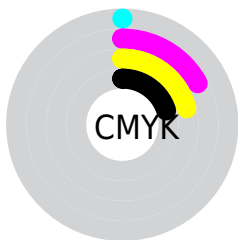
# Distribution



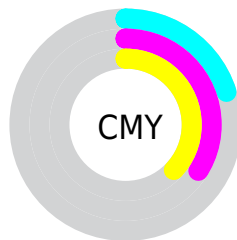
- Red (80%)
- Green (66%)
- Blue (63%)



- Red (80%)
- Yellow (67%)
- Blue (63%)



- Cyan (0%)
- Magenta (17%)
- Yellow (21%)
- Black (20%)




- Cyan (20%)
- Magenta (34%)
- Yellow (37%)


# Brightness & Saturation Gradients

These gradients show how the XYZ color 45.1617, 43.6105, 39.2951 changes by changing the brightness by 10 percent. The first figure shows a shift by +10% for each color and the second figure -10%.


Similar to the brightness gradients but the following saturation gradients show a change of the XYZ color 45.1617, 43.6105, 39.2951 by changing the saturation by 10% instead.





 45.1617, 43.6105,  
39.2951

 45.1617, 43.6105,  
39.2951


358.2007,  
361.1165, 358.6069

 31.7866, 30.3644,  
26.6798

 82.1986, 80.6313,  
75.3142

 21.3533, 20.1154,  
17.1026


 106.5911,  
105.1748, 99.5551

 13.4965, 12.4789,  
10.1449


135.3868,  
134.2530, 128.5082

 7.8506, 7.0707,  
5.3883

168.9511,  
168.2501, 162.5922

 4.0505, 3.5064,  
2.4141

207.6492,  
207.5506, 202.2255

 1.7308, 1.4015,  
0.7941

251.8467,

 0.4754, 0.2178,

252.5389, 247.8267

0.0000

301.9087,  
303.5994, 299.8143

0.0000, 0.0000,  
0.0000

45.1617, 43.6105,  
39.2951

45.1617, 43.6105,  
39.2951

40.7243, 37.3492,  
29.7583

50.2580, 50.7248,  
50.4831

36.9150, 31.9029,  
21.7916

56.0353, 58.7165,  
63.3928

33.7057, 27.2394,  
15.3110

62.5190, 67.6164,  
78.0939

31.0648, 23.3222,  
10.2236

69.7322, 77.4519,  
94.6514

28.9575, 20.1118,  
6.4259

76.6322, 87.8236,  
107.5204

■ 27.3453, 17.5648,  
3.7999

■ 78.4387, 91.4366,  
108.1226

■ 26.1834, 15.6326,  
2.2054

■ 25.4748, 14.3887,  
1.4346

# Harmonies

## Analogous

The Analogous color harmony consists of three colors that are next to each other on the color wheel.



46.2695, 43.6105, 45.1431



45.1617, 43.6105, 39.2951



43.0730, 43.6105, 35.8770

# Triad

The Triadic color harmony groups three colors that are evenly spaced from another and form a triangle on the color wheel.



45.1617, 43.6105, 39.2951



37.1699, 43.6105, 43.0432



42.2874, 43.6105, 62.0630

# Complementary

The Complementary color scheme is a pair of colors which are on the opposite of each other on the color wheel.



45.1617, 43.6105, 39.2951



44.5680, 50.3676, 63.8731

# Split Complementary

Split-complementary colors differ from the complementary color scheme. The scheme consists of three colors, the original color and two neighbors of the complement color.



39.8693, 43.6105, 61.3589



45.1617, 43.6105, 39.2951



36.9783, 43.6105, 49.9053

# Square

The Square scheme is like the rectangle color scheme, but the four colors are evenly spaced on the color wheel.



45.1617, 43.6105, 39.2951



38.4826, 43.6105, 37.8885



37.9483, 43.6105, 56.7391



44.5672, 43.6105, 58.5774



# Rectangle

The Rectangle color scheme consists of four colors that form a rectangle on the color wheel.



45.1617, 43.6105, 39.2951



41.4381, 43.6105, 35.2153



37.9483, 43.6105, 56.7391



41.4629, 43.6105, 62.3160

# Sweetspot

The Sweet Spot groups the original color and five complimentary colors.



45.1629, 43.6125, 39.2960



88.9454, 91.5770, 95.1928



46.9824, 41.7517, 56.8577



18.9013, 19.4122, 20.0700



0.0000, 0.0000, 0.0000



20.3446, 21.4041, 23.3091



# Same Dimension

The Same Dimension uses a secret algorithm to generate beautiful new colors.



45.1629, 43.6125, 39.2960



72.4070, 68.5036, 58.8408



49.4092, 52.1052, 40.7115



11.3995, 11.5880, 11.7153



16.2660, 9.2649, 0.9310



0.8955, 0.5907, 0.0668

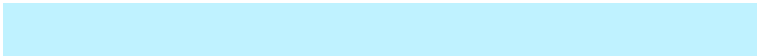


# Inverse Universe

The Inverse Universe completely reimagines the original color for something new.



44.5680, 50.3676, 63.8731



71.2472, 81.6256, 106.6079



40.2016, 41.6347, 62.4176



11.3361, 12.3126, 14.3495



14.9821, 18.9881, 38.8317

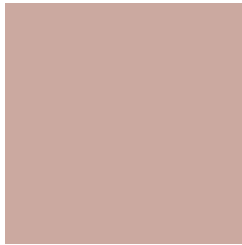


0.8243, 1.0823, 2.0204



# Previews

## White Background



This preview shows how the XYZ color 45.1617, 43.6105, 39.2951 looks on a white background.

## Color Contrast Check

Large Text (above 18pt) WCAG AA × Fail

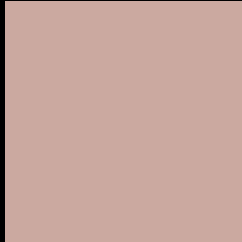
Any Text WCAG AA × Fail

Large Text (above 18pt) WCAG AAA × Fail

Any Text WCAG AAA × Fail



# Black Background



This preview shows how the XYZ color 45.1617, 43.6105, 39.2951 looks on a black background.

## Color Contrast Check

Large Text (above 18pt) WCAG AA ✓ Pass

Any Text WCAG AA ✓ Pass

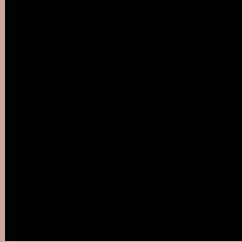
Large Text (above 18pt) WCAG AAA ✓ Pass

Any Text WCAG AAA ✓ Pass

If you want to check with other color combinations, try the [Color Contrast Checker](#).

# XYZ 45.1617, 43.6105, 39.2951

## Background



This preview shows how black text looks on a background with the XYZ color 45.1617, 43.6105, 39.2951.



This preview shows how white text looks on a background with the XYZ color 45.1617, 43.6105,

39.2951.

# Color Blindness Simulation

Color vision deficiency is a very complex topic, and I could not describe the different causes any better than Wikipedia does, so if you want to learn more, you should check out their [article about color blindness](#).

## Dichromacy



### Original Color

45.1617, 43.6105, 39.2951

### Protanopia

41.7546, 43.7983, 41.3752

### Deuteranopia

44.5393, 43.5669, 39.3195



## Tritanopia

46.9497, 43.5062, 48.5709

# Trichromacy



## Original Color

45.1617, 43.6105, 39.2951

## Protanomaly

42.7896, 43.4786, 40.7873

## Deuteranomaly

44.8073, 43.7050, 39.3320

## Tritanomaly

46.1670, 43.4534, 44.9838

# Monochromacy



## Original Color

45.1617, 43.6105, 39.2951

## Achromatopsia

42.3164, 44.5201, 48.4824

## Achromatomaly

43.1742, 44.1650, 44.7773

# CSS Examples

## Text

The CSS property to change the color of the text to XYZ 45.1617, 43.6105, 39.2951 is called "color". The color property can be set on classes, ids or directly on the HTML element.

This example shows how text in the color `rgb(203, 169, 160)` looks like.

```
.text, #text, p{  
    color:rgb(203, 169, 160)  
}
```

If you want to add a text shadow in that color use the text-shadow property, you can generate a text shadow directly with our [CSS Text Shadow Generator](#).

Here you see how black text with a 4 pixel rgb(203, 169, 160) colored shadow looks like.

```
.shadow{ text-shadow: 4px 4px 2px rgb(203, 169, 160) }
```

## Border

The CSS property to change the border of an element to XYZ 45.1617, 43.6105, 39.2951 is called "border". The border property can be set on classes, ids or directly on the HTML element.

This example shows the color as border, it can be applied via the CSS property "border" or "border-color".

```
.border, #border, table{ border:4px solid rgb(203, 169, 160) }
```



If only the border color should be changed use the property `border-color`.

```
.border{ border-color:rgb(203, 169, 160) }
```

If you want to add a box shadow in that color use:

Here you see how a box with a 4 pixel `rgb(203, 169, 160)` colored shadow looks like.

```
.boxshadow{ -moz-box-shadow:4px 4px 4px  
4px rgb(203, 169, 160); -webkit-box-  
shadow:4px 4px 4px 4px rgb(203, 169, 160);  
box-shadow:4px 4px 4px 4px rgb(203, 169,  
160) }
```

# Background

The CSS property to change the background color of an element to XYZ 45.1617, 43.6105, 39.2951 is called "background". The background property can be set on classes, ids or directly on the HTML element.

```
.background, #background, body{  
background: rgb(203, 169, 160) }
```

If only the background color should be changed can be used:

```
.background{ background-color: rgb(203,  
169, 160) }
```

This example shows the color as background, it is applied via the CSS property "background".

To optimize and compress your CSS code, you can use our [online CSS compressor and optimizer](#) based on csstidy. If you want to create a linear or radial gradient as background or border, check our [CSS Gradient Generator](#).

Hey! You found this booklet interesting? Support Converting Colors with the new Membership Option!

The pro membership hides all ads, plus gives you double the colors in the color bucket, and more awesome pro features!

**[Learn more, Memberships starting at \\$2.50/m!](#)**

**Follow me  
on Twitter!**

@ConvertingColor