

Converting Colors

XYZ(45.1666, 45.5092, 33.2433)

Have a look what the booklet for
XYZ(45.1666, 45.5092, 33.2433)
contains.

XYZ(45.0694, 45.4008, 33.1759)	3
<i>Conversions</i>	4
<i>Details</i>	6
<i>Harmonies</i>	12
<i>Previews</i>	24
<i>Color Blindness Simulation</i>	28
<i>CSS Examples</i>	31

Color

**XYZ(45.0694, 45.4008,
33.1759)**

Conversions

Conversions Part 1

Format	Color
Hex	CBAF91
RGB	203, 175, 145
RGB Percent	80%, 69%, 57%
CMY	0.2039, 0.3137, 0.4314
CMYK	0.00, 0.14, 0.29, 0.20
HSL	31°, 36%, 68%
HSV	31°, 29%, 80%
XYZ	45.0694, 45.4008, 33.1759
YIQ	179.9520, 26.3180, -3.3940

Conversions

Conversions Part 2

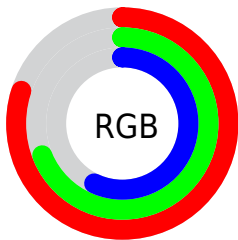
Format	Color
R _Y B	199, 203, 145
Decimal	13348753
CIE Lab	73.16, 5.61, 19.13
CIE LCh	73, 19.940, 73.662
Yxy	45.4008, 0.3645, 0.3672
Android (android.graphics.Color)	4291538833 (0xFFCBAF91)
YUV	179.9520, -17.2313, 20.2131
Hunter-Lab	67.3801, 1.4804, 17.9735

Details

The XYZ color **45.0694, 45.4008, 33.1759** is a light color, and the websafe version is hex **CCCC99**. A complement of this color would be **37.3997, 40.2175, 62.2916**, and the grayscale version is **43.4373, 45.6994, 49.7667**.

A 20% lighter version of the original color is **79.8456, 81.9771, 65.6477**, and **21.3161, 21.2700, 13.5717** is the 20% darker color. If you saturate the color by 10%, you get **41.8037, 41.1545, 25.0425**, and if you desaturate by 10%, it is **48.7556, 50.0400, 42.8304**.

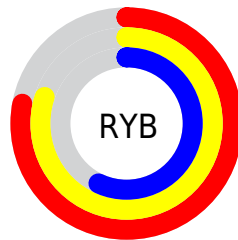
Distribution



Red (80%)

Green (69%)

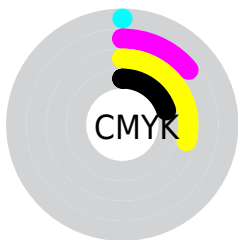
Blue (57%)



Red (78%)

Yellow (80%)

Blue (57%)

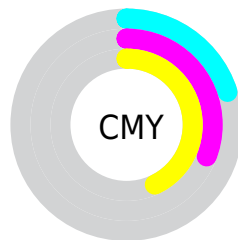


Cyan (0%)

Magenta (14%)

Yellow (29%)

Black (20%)



Cyan (20%)


Magenta (31%)


Yellow (43%)

Brightness & Saturation Gradients


These gradients show how the XYZ color 45.0694, 45.4008, 33.1759 changes by changing the brightness by 10 percent. The first figure shows a shift by +10% for each color and the second figure -10%.


Similar to the brightness gradients but the following saturation gradients show a change of the XYZ color 45.0694, 45.4008, 33.1759 by changing the saturation by 10% instead.

 45.0694, 45.4008,
33.1759

 45.0694, 45.4008,
33.1759


357.8335,
368.3944, 331.0979

 31.7136, 31.7732,
21.9890


 82.0610, 83.3215,
65.7692

 21.2973, 21.1884,
13.6506


 106.4275,
108.3835, 88.0127

 13.4552, 13.2618,
7.7421


135.1949,
138.0257, 114.7789

 7.8219, 7.6090,
3.8450

168.7286,
172.6326, 146.4862

 4.0320, 3.8458,
1.5407

207.3940,
212.5885, 183.5532

 1.7203, 1.5877,
0.2480

251.5563,

 0.4689, 0.3493,

258.2778, 226.3985

0.0000

301.5811,
310.0850, 275.4405

■ 0.0000, 0.0000,
0.0000

■ 45.0694, 45.4008,
33.1759

■ 45.0694, 45.4008,
33.1759

■ 41.8037, 41.1545,
25.0425

■ 48.7556, 50.0400,
42.8304

■ 38.9372, 37.2830,
18.3480

■ 52.8753, 55.0769,
54.0767

■ 36.4517, 33.7759,
13.0065

■ 57.4455, 60.5244,
66.9845

■ 34.3260, 30.6197,
8.9219

■ 62.4808, 66.3926,
81.6186

■ 32.5364, 27.7996,
5.9850

■ 67.9953, 72.6912,
98.0401

■ 31.0555, 25.2995,
4.0677

■ 72.0434, 78.6461,
105.9909

■ 29.8415, 23.0969,
2.9686

■ 74.9075, 84.3742,
106.9455

■ 29.6818, 22.8028,
2.8370

■ 77.9281, 90.4155,
107.9524

■ 78.4386, 91.4365,
108.1226

Harmonies

Analogous

The Analogous color harmony consists of three colors that are next to each other on the color wheel.



48.1961, 45.4008, 37.3063



45.0694, 45.4008, 33.1759



41.5850, 45.4008, 32.9979

Triad

The Triadic color harmony groups three colors that are evenly spaced from another and form a triangle on the color wheel.



45.0694, 45.4008, 33.1759



36.9486, 45.4008, 54.1180



47.9577, 45.4008, 64.6974

Complementary

The Complementary color scheme is a pair of colors which are on the opposite of each other on the color wheel.



45.0694, 45.4008, 33.1759



37.3997, 40.2175, 62.2916

Split Complementary

Split-complementary colors differ from the complementary color scheme. The scheme consists of three colors, the original color and two neighbors of the complement color.



44.7581, 45.4008, 70.5820



45.0694, 45.4008, 33.1759



38.4729, 45.4008, 63.9401

Square

The Square scheme is like the rectangle color scheme, but the four colors are evenly spaced on the color wheel.



45.0694, 45.4008, 33.1759



37.0219, 45.4008, 44.2172



41.2900, 45.4008, 70.2875



49.9242, 45.4008, 55.0453

Rectangle

The Rectangle color scheme consists of four colors that form a rectangle on the color wheel.



45.0694, 45.4008, 33.1759



39.5349, 45.4008, 35.0886



41.2900, 45.4008, 70.2875



46.9834, 45.4008, 67.2364

Sweetspot

The Sweet Spot groups the original color and five complimentary colors.



45.0706, 45.4029, 33.1768



88.1399, 91.7437, 89.4440



42.3004, 35.9663, 44.2652



18.6392, 19.3628, 18.5184



0.0000, 0.0000, 0.0000



20.3446, 21.4041, 23.3091

Same Dimension

The Same Dimension uses a secret algorithm to generate beautiful new colors.



45.0706, 45.4029, 33.1768



72.1682, 71.7630, 47.2405



50.8331, 57.3176, 35.1729



11.6843, 12.1576, 11.8102



18.9810, 14.6950, 1.8360



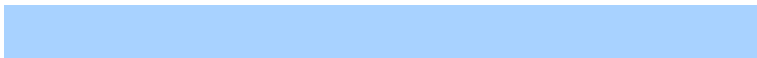
1.0550, 0.9097, 0.1200

Inverse Universe

The Inverse Universe completely reimagines the original color for something new.



37.3997, 40.2175, 62.2916



57.3457, 61.7444, 103.5032



32.7535, 30.6711, 60.6938



11.0411, 11.7227, 14.2511



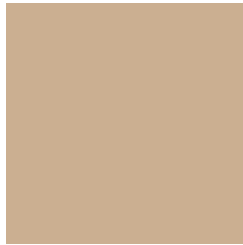
9.7290, 8.4820, 37.0807



0.5778, 0.5893, 1.9382

Previews

White Background



This preview shows how the XYZ color 45.0694, 45.4008, 33.1759 looks on a white background.

Color Contrast Check

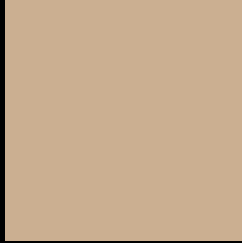
Large Text (above 18pt) WCAG AA × Fail

Any Text WCAG AA × Fail

Large Text (above 18pt) WCAG AAA × Fail

Any Text WCAG AAA × Fail

Black Background



This preview shows how the XYZ color 45.0694, 45.4008, 33.1759 looks on a black background.

Color Contrast Check

Large Text (above 18pt) WCAG AA ✓ Pass

Any Text WCAG AA ✓ Pass

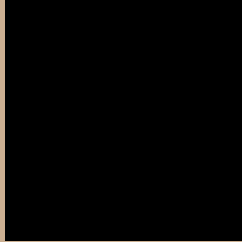
Large Text (above 18pt) WCAG AAA ✓ Pass

Any Text WCAG AAA ✓ Pass

If you want to check with other color combinations, try the [Color Contrast Checker](#).

XYZ 45.0694, 45.4008, 33.1759

Background



This preview shows how black text looks on a background with the XYZ color 45.0694, 45.4008, 33.1759.



This preview shows how white text looks on a background with the XYZ color 45.0694, 45.4008,

Color Blindness Simulation

Color vision deficiency is a very complex topic, and I could not describe the different causes any better than Wikipedia does, so if you want to learn more, you should check out their [article about color blindness](#).

Dichromacy



Original Color

45.0694, 45.4008, 33.1759

Protanopia

42.6218, 45.2939, 34.1000

Deuteranopia

46.3489, 45.4868, 33.1250



Tritanopia

48.6541, 45.4337, 51.0050

Trichromacy



Original Color

45.0694, 45.4008, 33.1759

Protanomaly

43.6144, 45.5182, 33.6813

Deuteranomaly

45.9790, 45.5818, 33.1629

Tritanomaly

47.3676, 45.4914, 43.8203

Monochromacy



Original Color

45.0694, 45.4008, 33.1759

Achromatopsia

43.3819, 45.6411, 49.7032

Achromatomaly

43.6345, 45.3222, 43.0075

CSS Examples

Text

The CSS property to change the color of the text to XYZ 45.0694, 45.4008, 33.1759 is called "color". The color property can be set on classes, ids or directly on the HTML element.

This example shows how text in the color `rgb(203, 175, 145)` looks like.

```
.text, #text, p{  
    color:rgb(203, 175, 145)  
}
```

If you want to add a text shadow in that color use the text-shadow property, you can generate a text shadow directly with our [CSS Text Shadow Generator](#).

Here you see how black text with a 4 pixel rgb(203, 175, 145) colored shadow looks like.

```
.shadow{ text-shadow: 4px 4px 2px rgb(203, 175, 145) }
```

Border

The CSS property to change the border of an element to XYZ 45.0694, 45.4008, 33.1759 is called "border". The border property can be set on classes, ids or directly on the HTML element.

This example shows the color as border, it can be applied via the CSS property "border" or "border-color".

```
.border, #border, table{ border:4px solid rgb(203, 175, 145) }
```


If only the border color should be changed use the property `border-color`.

```
.border{ border-color:rgb(203, 175, 145) }
```

If you want to add a box shadow in that color use:

Here you see how a box with a 4 pixel `rgb(203, 175, 145)` colored shadow looks like.

```
.boxshadow{ -moz-box-shadow:4px 4px 4px  
4px rgb(203, 175, 145); -webkit-box-  
shadow:4px 4px 4px 4px rgb(203, 175, 145);  
box-shadow:4px 4px 4px 4px rgb(203, 175,  
145) }
```

Background

The CSS property to change the background color of an element to XYZ 45.0694, 45.4008, 33.1759 is called "background". The background property can be set on classes, ids or directly on the HTML element.

```
.background, #background, body{  
background: rgb(203, 175, 145) }
```

If only the background color should be changed can be used:

```
.background{ background-color: rgb(203,  
175, 145) }
```

This example shows the color as background, it is applied via the CSS property "background".

To optimize and compress your CSS code, you can use our [online CSS compressor and optimizer](#) based on csstidy. If you want to create a linear or radial gradient as background or border, check our [CSS Gradient Generator](#).

Hey! You found this booklet interesting? Support Converting Colors with the new Membership Option!

The pro membership hides all ads, plus gives you double the colors in the color bucket, and more awesome pro features!

[Learn more, Memberships starting at \\$2.50/m!](#)

**Follow me
on Twitter!**

@ConvertingColor