

Converting Colors

XYZ(45.1897, 41.6147, 40.4797)

Have a look what the booklet for
XYZ(45.1897, 41.6147, 40.4797)
contains.

XYZ(45.2633, 41.7504, 40.3233)	3
<i>Conversions</i>	4
<i>Details</i>	6
<i>Harmonies</i>	12
<i>Previews</i>	24
<i>Color Blindness Simulation</i>	28
<i>CSS Examples</i>	31

Color

**XYZ(45.2633, 41.7504,
40.3233)**

Conversions

Conversions Part 1

Format	Color
Hex	CFA2A3
RGB	207, 162, 163
RGB Percent	81%, 64%, 64%
CMY	0.1882, 0.3647, 0.3608
CMYK	0.00, 0.22, 0.21, 0.19
HSL	359°, 32%, 72%
HSV	359°, 22%, 81%
XYZ	45.2633, 41.7504, 40.3233
YIQ	175.5690, 26.4990, 9.8510

Conversions

Conversions Part 2

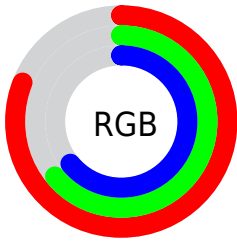
Format	Color
R_{YB}	207, 162, 163
Decimal	13607587
CIE _{Lab}	70.70, 16.76, 5.86
CIE _{LCh}	71, 17.750, 19.263
Yxy	41.7504, 0.3555, 0.3279
Android (android.graphics.Color)	4291797667 (0xFFCFA2A3)
YUV	175.5690, -6.1965, 27.5650
Hunter-Lab	64.6145, 11.9660, 8.2297

Details

The XYZ color **45.2633, 41.7504, 40.3233** is a light color, and the websafe version is hex **CC9999**. A complement of this color would be **48.3554, 56.7642, 66.8034**, and the grayscale version is **41.0650, 43.2036, 47.0487**.

A 20% lighter version of the original color is **78.7077, 75.9477, 76.8407**, and **21.3941, 18.9750, 17.5739** is the 20% darker color. If you saturate the color by 10%, you get **40.2419, 34.3812, 30.4063**, and if you desaturate by 10%, it is **51.1775, 50.4400, 51.9710**.

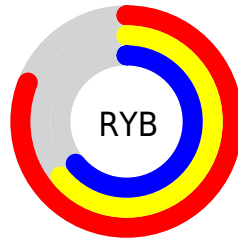
Distribution



Red (81%)

Green (64%)

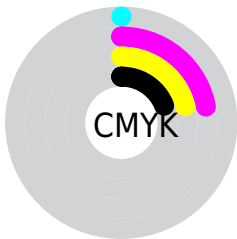
Blue (64%)



Red (81%)

Yellow (64%)

Blue (64%)

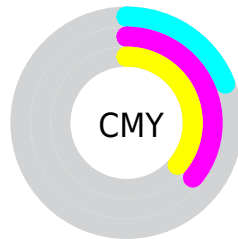


Cyan (0%)

Magenta (22%)

Yellow (21%)

Black (19%)



Cyan (19%)

Magenta (36%)

Yellow (36%)

Brightness & Saturation Gradients

These gradients show how the XYZ color 45.2633, 41.7504, 40.3233 changes by changing the brightness by 10 percent. The first figure shows a shift by +10% for each color and the second figure -10%.


Similar to the brightness gradients but the following saturation gradients show a change of the XYZ color 45.2633, 41.7504, 40.3233 by changing the saturation by 10% instead.


 45.2633, 41.7504,
40.3233


 45.2633, 41.7504,
40.3233

358.6047,
353.4472, 363.0769

 31.8670, 28.9059,
27.4750


 82.3500, 77.8217,
76.8980

 21.4150, 19.0096,
17.6947


 106.7712,
101.8173, 101.4616

 13.5419, 11.6772,
10.5639


135.5980,
130.2988, 130.7672

 7.8823, 6.5243,
5.6639

169.1959,
163.6504, 165.2336

 4.0709, 3.1664,
2.5764

207.9301,
202.2567, 205.2792

 1.7423, 1.2192,
0.8802

252.1661,

 0.4825, 0.0773,

246.5020, 251.3226

0.0000

302.2691,
296.7707, 303.7823

0.0000, 0.0000,
0.0000

45.2633, 41.7504,
40.3233

45.2633, 41.7504,
40.3233

40.2419, 34.3812,
30.4063

51.1775, 50.4400,
51.9710

36.0667, 28.2624,
22.1352

58.0214, 60.5039,
65.4237

32.6923, 23.3264,
15.4215

65.8337, 72.0004,
80.7544

30.0673, 19.4968,
10.1679

74.6501, 84.9823,
98.0316

28.1347, 16.6883,
6.2658

79.5422, 92.0055,
108.1742

■ 26.8290, 14.8032,
3.5918

■ 26.0726, 13.7249,
1.9995

■ 25.7574, 13.2755,
1.3364

Harmonies

Analogous

The Analogous color harmony consists of three colors that are next to each other on the color wheel.



45.5012, 41.7504, 48.5434



45.2633, 41.7504, 40.3233



43.4881, 41.7504, 34.2597

Triad

The Triadic color harmony groups three colors that are evenly spaced from another and form a triangle on the color wheel.



45.2633, 41.7504, 40.3233



35.5504, 41.7504, 35.6888



38.6383, 41.7504, 63.2978

Complementary

The Complementary color scheme is a pair of colors which are on the opposite of each other on the color wheel.



45.2633, 41.7504, 40.3233



48.3554, 56.7642, 66.8034

Split Complementary

Split-complementary colors differ from the complementary color scheme. The scheme consists of three colors, the original color and two neighbors of the complement color.



36.1057, 41.7504, 58.8664



45.2633, 41.7504, 40.3233



34.3823, 41.7504, 42.5083

Square

The Square scheme is like the rectangle color scheme, but the four colors are evenly spaced on the color wheel.



45.2633, 41.7504, 40.3233



37.8462, 41.7504, 31.8214



34.5804, 41.7504, 51.0134



41.5773, 41.7504, 62.5240

Rectangle

The Rectangle color scheme consists of four colors that form a rectangle on the color wheel.



45.2633, 41.7504, 40.3233



41.7185, 41.7504, 31.9339



34.5804, 41.7504, 51.0134



37.7138, 41.7504, 62.3479

Sweetspot

The Sweet Spot groups the original color and five complimentary colors.



45.2644, 41.7523, 40.3242



86.9335, 88.0616, 92.9547



49.4989, 43.3979, 64.7995



18.4653, 18.6399, 19.6168



0.0000, 0.0000, 0.0000



20.3446, 21.4041, 23.3091

Same Dimension

The Same Dimension uses a secret algorithm to generate beautiful new colors.



45.2644, 41.7523, 40.3242



68.6857, 61.2513, 57.0138



49.1884, 49.7425, 41.1936



11.8192, 11.8124, 12.3237



16.2328, 8.3660, 0.8662



0.9114, 0.4693, 0.0685

Inverse Universe

The Inverse Universe completely reimagines the original color for something new.



45.2644, 41.7523, 40.3242



68.6857, 61.2513, 57.0138



43.7233, 47.3059, 65.8582



11.8192, 11.8124, 12.3237



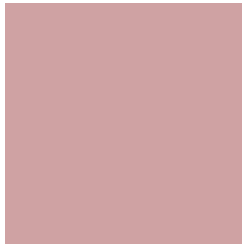
16.2328, 8.3660, 0.8662



0.9114, 0.4693, 0.0685

Previews

White Background



This preview shows how the XYZ color 45.2633, 41.7504, 40.3233 looks on a white background.

Color Contrast Check

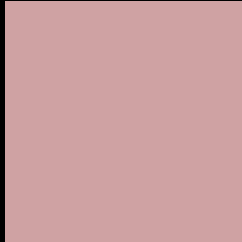
Large Text (above 18pt) WCAG AA × Fail

Any Text WCAG AA × Fail

Large Text (above 18pt) WCAG AAA × Fail

Any Text WCAG AAA × Fail

Black Background



This preview shows how the XYZ color 45.2633, 41.7504, 40.3233 looks on a black background.

Color Contrast Check

Large Text (above 18pt) WCAG AA ✓ Pass

Any Text WCAG AA ✓ Pass

Large Text (above 18pt) WCAG AAA ✓ Pass

Any Text WCAG AAA ✓ Pass

If you want to check with other color combinations, try the [Color Contrast Checker](#).

XYZ 45.2633, 41.7504, 40.3233

Background



This preview shows how black text looks on a background with the XYZ color 45.2633, 41.7504, 40.3233.



This preview shows how white text looks on a background with the XYZ color 45.2633, 41.7504,

Color Blindness Simulation

Color vision deficiency is a very complex topic, and I could not describe the different causes any better than Wikipedia does, so if you want to learn more, you should check out their [article about color blindness](#).

Dichromacy



Original Color

45.2633, 41.7504, 40.3233

Protanopia

40.0454, 41.7167, 43.4776

Deuteranopia

42.5884, 41.7154, 39.9896



Tritanopia

46.1261, 41.5686, 45.1276

Trichromacy



Original Color

45.2633, 41.7504, 40.3233

Protanomaly

41.7167, 41.4867, 42.3682

Deuteranomaly

43.5299, 41.6610, 39.9295

Tritanomaly

45.9187, 41.7642, 43.1772

Monochromacy



Original Color

45.2633, 41.7504, 40.3233

Achromatopsia

41.2663, 43.4154, 47.2793

Achromatomaly

42.4071, 42.6309, 44.5216

CSS Examples

Text

The CSS property to change the color of the text to XYZ 45.2633, 41.7504, 40.3233 is called "color". The color property can be set on classes, ids or directly on the HTML element.

This example shows how text in the color `rgb(207, 162, 163)` looks like.

```
.text, #text, p{  
    color:rgb(207, 162, 163)  
}
```

If you want to add a text shadow in that color use the text-shadow property, you can generate a text shadow directly with our [CSS Text Shadow Generator](#).

Here you see how black text with a 4 pixel rgb(207, 162, 163) colored shadow looks like.

```
.shadow{ text-shadow: 4px 4px 2px rgb(207, 162, 163) }
```

Border

The CSS property to change the border of an element to XYZ 45.2633, 41.7504, 40.3233 is called "border". The border property can be set on classes, ids or directly on the HTML element.

This example shows the color as border, it can be applied via the CSS property "border" or "border-color".

```
.border, #border, table{ border:4px solid rgb(207, 162, 163) }
```


If only the border color should be changed use the property `border-color`.

```
.border{ border-color:rgb(207, 162, 163) }
```

If you want to add a box shadow in that color use:

Here you see how a box with a 4 pixel `rgb(207, 162, 163)` colored shadow looks like.

```
.boxshadow{ -moz-box-shadow:4px 4px 4px  
4px rgb(207, 162, 163); -webkit-box-  
shadow:4px 4px 4px 4px rgb(207, 162, 163);  
box-shadow:4px 4px 4px 4px rgb(207, 162,  
163) }
```

Background

The CSS property to change the background color of an element to XYZ 45.2633, 41.7504, 40.3233 is called "background". The background property can be set on classes, ids or directly on the HTML element.

```
.background, #background, body{  
background: rgb(207, 162, 163) }
```

If only the background color should be changed can be used:

```
.background{ background-color: rgb(207,  
162, 163) }
```

This example shows the color as background, it is applied via the CSS property "background".

To optimize and compress your CSS code, you can use our [online CSS compressor and optimizer](#) based on csstidy. If you want to create a linear or radial gradient as background or border, check our [CSS Gradient Generator](#).

Hey! You found this booklet interesting? Support Converting Colors with the new Membership Option!

The pro membership hides all ads, plus gives you double the colors in the color bucket, and more awesome pro features!

[Learn more, Memberships starting at \\$2.50/m!](#)

**Follow me
on Twitter!**

@ConvertingColor