

Converting Colors

XYZ(45.2461, 42.8248, 39.5995)

Have a look what the booklet for
XYZ(45.2461, 42.8248, 39.5995)
contains.

XYZ(45.2461, 42.8248, 39.5995)	3
<i>Conversions</i>	4
<i>Details</i>	6
<i>Harmonies</i>	12
<i>Previews</i>	24
<i>Color Blindness Simulation</i>	28
<i>CSS Examples</i>	31

Color

**XYZ(45.2461, 42.8248,
39.5995)**

Conversions

Conversions Part 1

Format	Color
Hex	CDA6A1
RGB	205, 166, 161
RGB Percent	80%, 65%, 63%
CMY	0.1961, 0.3490, 0.3686
CMYK	0.00, 0.19, 0.21, 0.20
HSL	7°, 31%, 72%
HSV	7°, 21%, 80%
XYZ	45.2461, 42.8248, 39.5995
YIQ	177.0910, 24.8490, 6.7130

Conversions

Conversions Part 2

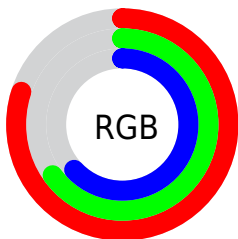
Format	Color
R_{YB}	205, 167, 161
Decimal	13477537
CIE _{Lab}	71.44, 13.53, 7.99
CIE _{LCh}	71, 15.712, 30.572
Yxy	42.8248, 0.3544, 0.3354
Android (android.graphics.Color)	4291667617 (0xFFCDA6A1)
YUV	177.0910, -7.9329, 24.4762
Hunter-Lab	65.4407, 8.8949, 9.9309

Details

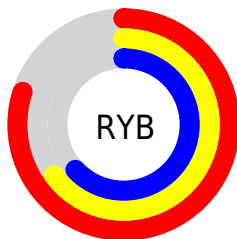
The XYZ color **45.2461, 42.8248, 39.5995** is a light color, and the websafe version is hex **CC9999**. A complement of this color would be **46.3712, 53.2920, 65.6003**, and the grayscale version is **41.8700, 44.0504, 47.9709**.

A 20% lighter version of the original color is **79.4911, 77.9308, 75.8183**, and **21.4095, 19.6444, 17.4152** is the 20% darker color. If you saturate the color by 10%, you get **40.5119, 36.0160, 29.8217**, and if you desaturate by 10%, it is **50.7456, 50.6892, 51.0957**.

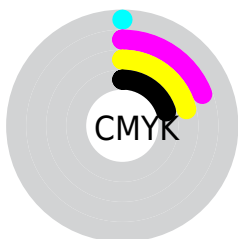
Distribution



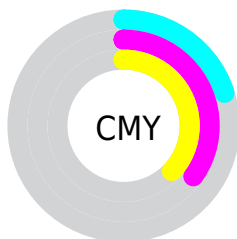
- Red (80%)
- Green (65%)
- Blue (63%)



- Red (80%)
- Yellow (65%)
- Blue (63%)



- Cyan (0%)
- Magenta (19%)
- Yellow (21%)
- Black (20%)




- Cyan (20%)
- Magenta (35%)
- Yellow (37%)

Brightness & Saturation Gradients

These gradients show how the XYZ color 45.2461, 42.8248, 39.5995 changes by changing the brightness by 10 percent. The first figure shows a shift by +10% for each color and the second figure -10%.


Similar to the brightness gradients but the following saturation gradients show a change of the XYZ color 45.2461, 42.8248, 39.5995 by changing the saturation by 10% instead.


 45.2461, 42.8248,
39.5995


 45.2461, 42.8248,
39.5995


358.5363,
357.8908, 359.9344

 31.8534, 29.7477,
26.9150


 82.3244, 79.4464,
75.7837

 21.4046, 19.6471,
17.2775


 106.7407,
103.7597, 100.1204

 13.5342, 12.1388,
10.2685


135.5623,
132.5871, 129.1783

 7.8769, 6.8383,
5.4694

169.1544,
166.3131, 163.3760

 4.0674, 3.3612,
2.4617

207.8826,
205.3221, 203.1319

 1.7404, 1.3231,
0.8198

252.1120,

 0.4813, 0.1590,

249.9985, 248.8645

0.0000

302.2081,
300.7265, 300.9925

0.0000, 0.0000,
0.0000

45.2461, 42.8248,
39.5995

45.2461, 42.8248,
39.5995

40.5119, 36.0160,
29.8217

50.7456, 50.6892,
51.0957

36.5057, 30.2123,
21.6772

57.0388, 59.6455,
64.3844

33.1922, 25.3678,
15.0774

64.1567, 69.7352,
79.5389

30.5317, 21.4306,
9.9246

72.1277, 80.9960,
96.6274

28.4806, 18.3440,
6.1098

78.9870, 91.7192,
108.1483

■ 26.9896, 16.0447,
3.5082

■ 26.0019, 14.4608,
1.9719

■ 25.4897, 13.6045,
1.2825

Harmonies

Analogous

The Analogous color harmony consists of three colors that are next to each other on the color wheel.



46.0095, 42.8248, 46.4836



45.2461, 42.8248, 39.5995



43.2566, 42.8248, 35.0481

Triad

The Triadic color harmony groups three colors that are evenly spaced from another and form a triangle on the color wheel.



45.2461, 42.8248, 39.5995



36.4287, 42.8248, 39.8260



40.7545, 42.8248, 62.7803

Complementary

The Complementary color scheme is a pair of colors which are on the opposite of each other on the color wheel.



45.2461, 42.8248, 39.5995



46.3712, 53.2920, 65.6003

Split Complementary

Split-complementary colors differ from the complementary color scheme. The scheme consists of three colors, the original color and two neighbors of the complement color.



38.2533, 42.8248, 60.5152



45.2461, 42.8248, 39.5995



35.8223, 42.8248, 46.7746

Square

The Square scheme is like the rectangle color scheme, but the four colors are evenly spaced on the color wheel.



45.2461, 42.8248, 39.5995



38.1689, 42.8248, 35.1686



36.4759, 42.8248, 54.4446



43.3483, 42.8248, 60.3423

Rectangle

The Rectangle color scheme consists of four colors that form a rectangle on the color wheel.



45.2461, 42.8248, 39.5995



41.5433, 42.8248, 33.6742



36.4759, 42.8248, 54.4446



39.8754, 42.8248, 62.5414

Sweetspot

The Sweet Spot groups the original color and five complimentary colors.



45.2473, 42.8268, 39.6004



88.5093, 90.7049, 95.0475



48.4178, 42.6677, 60.6961



18.7986, 19.2068, 20.0357



0.0000, 0.0000, 0.0000



20.3446, 21.4041, 23.3091

Same Dimension

The Same Dimension uses a secret algorithm to generate beautiful new colors.



45.2473, 42.8268, 39.6004



70.1869, 64.5093, 56.7259



49.4656, 51.2634, 41.0065



11.3134, 11.4157, 11.6866



15.9039, 8.5407, 0.8103



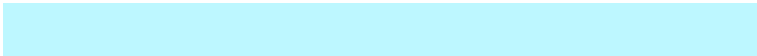
0.8558, 0.5113, 0.0536

Inverse Universe

The Inverse Universe completely reimagines the original color for something new.



46.3712, 53.2920, 65.6003



72.3635, 84.8037, 107.1625



41.7579, 44.0655, 64.0626



11.4301, 12.5007, 14.3808



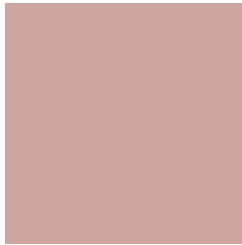
17.2782, 23.5803, 39.5971



0.9231, 1.2799, 2.0533

Previews

White Background



This preview shows how the XYZ color 45.2461, 42.8248, 39.5995 looks on a white background.

Color Contrast Check

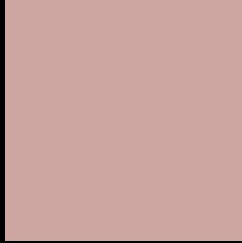
Large Text (above 18pt) WCAG AA × Fail

Any Text WCAG AA × Fail

Large Text (above 18pt) WCAG AAA × Fail

Any Text WCAG AAA × Fail

Black Background



This preview shows how the XYZ color 45.2461, 42.8248, 39.5995 looks on a black background.

Color Contrast Check

Large Text (above 18pt) WCAG AA ✓ Pass

Any Text WCAG AA ✓ Pass

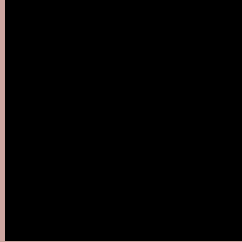
Large Text (above 18pt) WCAG AAA ✓ Pass

Any Text WCAG AAA ✓ Pass

If you want to check with other color combinations, try the [Color Contrast Checker](#).

XYZ 45.2461, 42.8248, 39.5995

Background



This preview shows how black text looks on a background with the XYZ color 45.2461, 42.8248, 39.5995.



This preview shows how white text looks on a background with the XYZ color 45.2461, 42.8248,

39.5995.

Color Blindness Simulation

Color vision deficiency is a very complex topic, and I could not describe the different causes any better than Wikipedia does, so if you want to learn more, you should check out their [article about color blindness](#).

Dichromacy



Original Color

45.2461, 42.8248, 39.5995

Protanopia

41.0750, 42.8490, 42.1822

Deuteranopia

43.8218, 42.9198, 39.2324



Tritanopia

46.8441, 42.9509, 46.8957

Trichromacy



Original Color

45.2461, 42.8248, 39.5995

Protanomaly

42.4990, 42.7533, 41.1342

Deuteranomaly

44.4352, 42.9608, 39.2080

Tritanomaly

46.2594, 42.9724, 44.3844

Monochromacy



Original Color

45.2461, 42.8248, 39.5995

Achromatopsia

41.7894, 43.9657, 47.8787

Achromatomaly

42.7878, 43.3922, 44.6485

CSS Examples

Text

The CSS property to change the color of the text to XYZ 45.2461, 42.8248, 39.5995 is called "color". The color property can be set on classes, ids or directly on the HTML element.

This example shows how text in the color `rgb(205, 166, 161)` looks like.

```
.text, #text, p{  
    color:rgb(205, 166, 161)  
}
```

If you want to add a text shadow in that color use the text-shadow property, you can generate a text shadow directly with our [CSS Text Shadow Generator](#).

Here you see how black text with a 4 pixel rgb(205, 166, 161) colored shadow looks like.

```
.shadow{ text-shadow: 4px 4px 2px rgb(205, 166, 161) }
```

Border

The CSS property to change the border of an element to XYZ 45.2461, 42.8248, 39.5995 is called "border". The border property can be set on classes, ids or directly on the HTML element.

This example shows the color as border, it can be applied via the CSS property "border" or "border-color".

```
.border, #border, table{ border:4px solid rgb(205, 166, 161) }
```


If only the border color should be changed use the property `border-color`.

```
.border{ border-color:rgb(205, 166, 161) }
```

If you want to add a box shadow in that color use:

Here you see how a box with a 4 pixel `rgb(205, 166, 161)` colored shadow looks like.

```
.boxshadow{ -moz-box-shadow:4px 4px 4px  
4px rgb(205, 166, 161); -webkit-box-  
shadow:4px 4px 4px 4px rgb(205, 166, 161);  
box-shadow:4px 4px 4px 4px rgb(205, 166,  
161) }
```

Background

The CSS property to change the background color of an element to XYZ 45.2461, 42.8248, 39.5995 is called "background". The background property can be set on classes, ids or directly on the HTML element.

```
.background, #background, body{  
background: rgb(205, 166, 161) }
```

If only the background color should be changed can be used:

```
.background{ background-color: rgb(205,  
166, 161) }
```

This example shows the color as background, it is applied via the CSS property "background".

To optimize and compress your CSS code, you can use our [online CSS compressor and optimizer](#) based on csstidy. If you want to create a linear or radial gradient as background or border, check our [CSS Gradient Generator](#).

Hey! You found this booklet interesting? Support Converting Colors with the new Membership Option!

The pro membership hides all ads, plus gives you double the colors in the color bucket, and more awesome pro features!

[Learn more, Memberships starting at \\$2.50/m!](#)

**Follow me
on Twitter!**

@ConvertingColor