

Converting Colors

XYZ(45.3355, 40.5305, 27.6240)

Have a look what the booklet for
XYZ(45.3355, 40.5305, 27.6240)
contains.

XYZ(45.3355, 40.5305, 27.6240)	3
<i>Conversions</i>	4
<i>Details</i>	6
<i>Harmonies</i>	12
<i>Previews</i>	24
<i>Color Blindness Simulation</i>	28
<i>CSS Examples</i>	31

Color

**XYZ(45.3355, 40.5305,
27.6240)**

Conversions

Conversions Part 1

Format	Color
Hex	DB9C85
RGB	219, 156, 133
RGB Percent	86%, 61%, 52%
CMY	0.1412, 0.3882, 0.4784
CMYK	0.00, 0.29, 0.39, 0.14
HSL	16°, 54%, 69%
HSV	16°, 39%, 86%
XYZ	45.3355, 40.5305, 27.6240
YIQ	172.2150, 44.9310, 6.2030

Conversions

Conversions Part 2

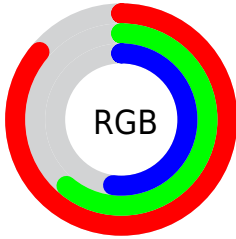
Format	Color
R_{YB}	219, 164, 133
Decimal	14392453
CIE _{Lab}	69.85, 20.64, 21.40
CIE _{LCh}	70, 29.730, 46.035
Yxy	40.5305, 0.3995, 0.3571
Android (android.graphics.Color)	4292582533 (0xFFDB9C85)
YUV	172.2150, -19.3330, 41.0304
Hunter-Lab	63.6636, 15.7005, 18.8382

Details

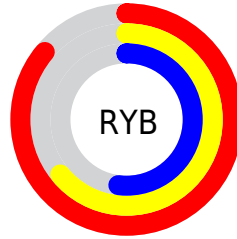
The XYZ color **45.3355, 40.5305, 27.6240** is a light color, and the websafe version is hex **CC9999**. A complement of this color would be **42.1980, 49.5787, 74.3633**, and the grayscale version is **39.4014, 41.4534, 45.1427**.

A 20% lighter version of the original color is **73.3972, 71.3937, 56.3663**, and **21.4119, 18.2065, 10.5693** is the 20% darker color. If you saturate the color by 10%, you get **41.4610, 34.9557, 19.6301**, and if you desaturate by 10%, it is **49.8830, 46.9465, 37.3993**.

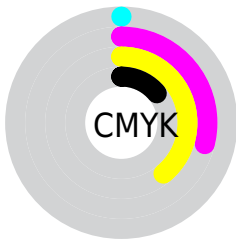
Distribution



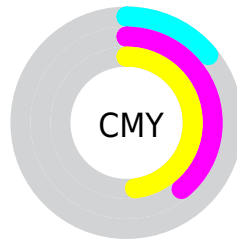
- Red (86%)
- Green (61%)
- Blue (52%)



- Red (86%)
- Yellow (64%)
- Blue (52%)



- Cyan (0%)
- Magenta (29%)
- Yellow (39%)
- Black (14%)



- Cyan (14%)
- Magenta (39%)
- Yellow (48%)

Brightness & Saturation Gradients

These gradients show how the XYZ color 45.3355, 40.5305, 27.6240 changes by changing the brightness by 10 percent. The first figure shows a shift by +10% for each color and the second figure -10%.

Similar to the brightness gradients but the following saturation gradients show a change of the XYZ color 45.3355, 40.5305, 27.6240 by changing the saturation by 10% instead.

45.3355, 40.5305,
27.6240

45.3355, 40.5305,
27.6240

358.8915,
348.3545, 304.5211

31.9242, 27.9524,
17.8058

82.4576, 75.9707,
56.8994

21.4589, 18.2898,
10.6427

106.8991, 99.6015,
77.1938

13.5742, 11.1582,
5.7160

135.7480,
127.6854, 101.8173

7.9048, 6.1734,
2.6072

169.3697,
160.6068, 131.1885

4.0854, 2.9508,
0.8962

208.1296,
198.7500, 165.7260

1.7506, 1.1061,
0.0000

252.3929,

0.4876, 0.0000,

242.4994, 205.8482

0.0000

302.5251,
292.2394, 251.9737

■ 0.0000, 0.0000,
0.0000

■ 45.3355, 40.5305,
27.6240

■ 45.3355, 40.5305,
27.6240

■ 41.4610, 34.9557,
19.6301

■ 49.8830, 46.9465,
37.3993

■ 38.2229, 30.1806,
13.3064

■ 55.1317, 54.2311,
49.0530

■ 35.5855, 26.1689,
8.5332

■ 61.1115, 62.4178,
62.6780

■ 33.5080, 22.8790,
5.1734

■ 67.8500, 71.5364,
78.3602

■ 31.9436, 20.2649,
3.0651

■ 75.3730, 81.6155,
96.1803

■ 30.8252, 18.2697,
1.9477

■ 82.1543, 92.0619,
108.0475

■ 30.7559, 18.1452,
1.8814

■ 83.0233, 93.8000,
108.3372

Harmonies

Analogous

The Analogous color harmony consists of three colors that are next to each other on the color wheel.



48.1542, 40.5305, 37.1852



45.3355, 40.5305, 27.6240



40.8077, 40.5305, 23.0274

Triad

The Triadic color harmony groups three colors that are evenly spaced from another and form a triangle on the color wheel.



45.3355, 40.5305, 27.6240



30.1963, 40.5305, 38.0191



41.1452, 40.5305, 74.9410

Complementary

The Complementary color scheme is a pair of colors which are on the opposite of each other on the color wheel.



45.3355, 40.5305, 27.6240



42.1980, 49.5787, 74.3633

Split Complementary

Split-complementary colors differ from the complementary color scheme. The scheme consists of three colors, the original color and two neighbors of the complement color.



36.3253, 40.5305, 75.2954



45.3355, 40.5305, 27.6240



30.2701, 40.5305, 51.8915

Square

The Square scheme is like the rectangle color scheme, but the four colors are evenly spaced on the color wheel.



45.3355, 40.5305, 27.6240



32.2187, 40.5305, 28.1240



32.4297, 40.5305, 66.1722



45.6004, 40.5305, 65.2864

Rectangle

The Rectangle color scheme consists of four colors that form a rectangle on the color wheel.



45.3355, 40.5305, 27.6240



37.5550, 40.5305, 22.6159



32.4297, 40.5305, 66.1722



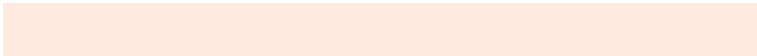
39.5075, 40.5305, 76.2110

Sweetspot

The Sweet Spot groups the original color and five complimentary colors.



45.3365, 40.5325, 27.6248



83.7706, 84.7070, 82.7407



47.5725, 35.8240, 56.6718



17.6879, 17.7994, 17.1555



0.0000, 0.0000, 0.0000



20.3446, 21.4041, 23.3091

Same Dimension

The Same Dimension uses a secret algorithm to generate beautiful new colors.



45.3365, 40.5325, 27.6248



59.4810, 50.7279, 29.6336



53.8552, 57.5698, 30.4644



13.3380, 13.6153, 13.6506



18.3143, 10.9141, 1.1414



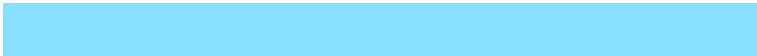
1.2571, 0.8483, 0.0975

Inverse Universe

The Inverse Universe completely reimagines the original color for something new.



42.1980, 49.5787, 74.3633



54.4375, 65.1266, 104.3093



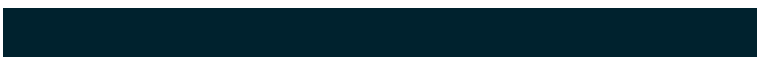
33.8615, 32.9057, 71.5844



13.1349, 14.2096, 16.7026



15.1730, 18.2153, 42.4546



1.0524, 1.3190, 2.7736

Previews

White Background



This preview shows how the XYZ color 45.3355, 40.5305, 27.6240 looks on a white background.

Color Contrast Check

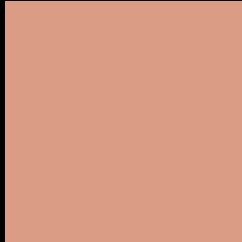
Large Text (above 18pt) WCAG AA × Fail

Any Text WCAG AA × Fail

Large Text (above 18pt) WCAG AAA × Fail

Any Text WCAG AAA × Fail

Black Background



This preview shows how the XYZ color 45.3355, 40.5305, 27.6240 looks on a black background.

Color Contrast Check

Large Text (above 18pt) WCAG AA ✓ Pass

Any Text WCAG AA ✓ Pass

Large Text (above 18pt) WCAG AAA ✓ Pass

Any Text WCAG AAA ✓ Pass

If you want to check with other color combinations, try the [Color Contrast Checker](#).

XYZ 45.3355, 40.5305, 27.6240

Background



This preview shows how black text looks on a background with the XYZ color 45.3355, 40.5305, 27.6240.



This preview shows how white text looks on a background with the XYZ color 45.3355, 40.5305,

27.6240.

Color Blindness Simulation

Color vision deficiency is a very complex topic, and I could not describe the different causes any better than Wikipedia does, so if you want to learn more, you should check out their [article about color blindness](#).

Dichromacy



Original Color

45.3355, 40.5305, 27.6240

Protanopia

38.3526, 40.8430, 30.6730

Deuteranopia

41.4596, 40.6071, 27.1255



Tritanopia

47.9633, 40.6304, 39.9648

Trichromacy



Original Color

45.3355, 40.5305, 27.6240

Protanomaly

40.6573, 40.6807, 29.3762

Deuteranomaly

42.9222, 40.5656, 27.3975

Tritanomaly

46.8775, 40.4216, 35.0372

Monochromacy



Original Color

45.3355, 40.5305, 27.6240

Achromatopsia

39.2122, 41.2543, 44.9259

Achromatomaly

40.7940, 40.5599, 38.0265

CSS Examples

Text

The CSS property to change the color of the text to XYZ 45.3355, 40.5305, 27.6240 is called "color". The color property can be set on classes, ids or directly on the HTML element.

This example shows how text in the color `rgb(219, 156, 133)` looks like.

```
.text, #text, p{  
    color:rgb(219, 156, 133)  
}
```

If you want to add a text shadow in that color use the text-shadow property, you can generate a text shadow directly with our [CSS Text Shadow Generator](#).

Here you see how black text with a 4 pixel rgb(219, 156, 133) colored shadow looks like.

```
.shadow{ text-shadow: 4px 4px 2px rgb(219, 156, 133) }
```

Border

The CSS property to change the border of an element to XYZ 45.3355, 40.5305, 27.6240 is called "border". The border property can be set on classes, ids or directly on the HTML element.

This example shows the color as border, it can be applied via the CSS property "border" or "border-color".

```
.border, #border, table{ border:4px solid rgb(219, 156, 133) }
```


If only the border color should be changed use the property `border-color`.

```
.border{ border-color:rgb(219, 156, 133) }
```

If you want to add a box shadow in that color use:

Here you see how a box with a 4 pixel `rgb(219, 156, 133)` colored shadow looks like.

```
.boxshadow{ -moz-box-shadow:4px 4px 4px  
4px rgb(219, 156, 133); -webkit-box-  
shadow:4px 4px 4px 4px rgb(219, 156, 133);  
box-shadow:4px 4px 4px 4px rgb(219, 156,  
133) }
```

Background

The CSS property to change the background color of an element to XYZ 45.3355, 40.5305, 27.6240 is called "background". The background property can be set on classes, ids or directly on the HTML element.

```
.background, #background, body{  
background: rgb(219, 156, 133) }
```

If only the background color should be changed can be used:

```
.background{ background-color: rgb(219,  
156, 133) }
```

This example shows the color as background, it is applied via the CSS property "background".

To optimize and compress your CSS code, you can use our [online CSS compressor and optimizer](#) based on csstidy. If you want to create a linear or radial gradient as background or border, check our [CSS Gradient Generator](#).

Hey! You found this booklet interesting? Support Converting Colors with the new Membership Option!

The pro membership hides all ads, plus gives you double the colors in the color bucket, and more awesome pro features!

[Learn more, Memberships starting at \\$2.50/m!](#)

**Follow me
on Twitter!**

@ConvertingColor