

Converting Colors

XYZ(45.3776, 42.8544, 38.2730)

Have a look what the booklet for
XYZ(45.3776, 42.8544, 38.2730)
contains.

XYZ(45.5399, 43.0065, 38.2486)	3
<i>Conversions</i>	4
<i>Details</i>	6
<i>Harmonies</i>	12
<i>Previews</i>	24
<i>Color Blindness Simulation</i>	28
<i>CSS Examples</i>	31

Color

**XYZ(45.5399, 43.0065,
38.2486)**

Conversions

Conversions Part 1

Format	Color
Hex	CFA69E
RGB	207, 166, 158
RGB Percent	81%, 65%, 62%
CMY	0.1882, 0.3490, 0.3804
CMYK	0.00, 0.20, 0.24, 0.19
HSL	10°, 34%, 72%
HSV	10°, 24%, 81%
XYZ	45.5399, 43.0065, 38.2486
YIQ	177.3470, 27.0040, 6.2040

Conversions

Conversions Part 2

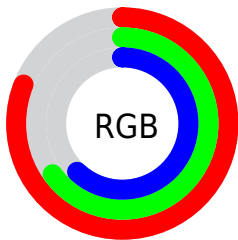
Format	Color
RYB	207, 168, 158
Decimal	13608606
CIELab	71.56, 13.84, 9.85
CIELCh	72, 16.985, 35.432
Yxy	43.0065, 0.3592, 0.3392
Android (android.graphics.Color)	4291798686 (0xFFCFA69E)
YUV	177.3470, -9.5381, 26.0057
Hunter-Lab	65.5793, 9.1909, 11.3251

Details

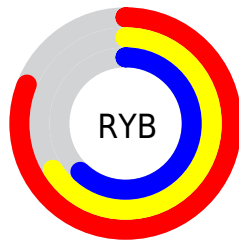
The XYZ color **45.5399, 43.0065, 38.2486** is a light color, and the websafe version is hex **CC9999**. A complement of this color would be **45.7859, 52.6193, 66.7751**, and the grayscale version is **42.0120, 44.1999, 48.1337**.

A 20% lighter version of the original color is **79.1067, 77.7770, 73.7939**, and **21.6201, 19.7716, 16.5867** is the 20% darker color. If you saturate the color by 10%, you get **40.9672, 36.4761, 28.6617**, and if you desaturate by 10%, it is **50.8391, 50.5088, 49.5592**.

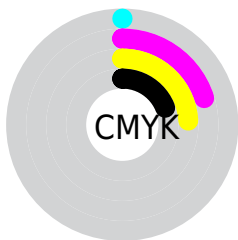
Distribution



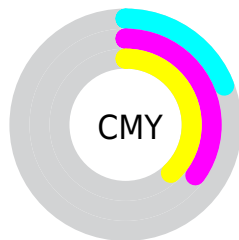
- Red (81%)
- Green (65%)
- Blue (62%)



- Red (81%)
- Yellow (66%)
- Blue (62%)



- Cyan (0%)
- Magenta (20%)
- Yellow (24%)
- Black (19%)





- Cyan (19%)
- Magenta (35%)
- Yellow (38%)

Brightness & Saturation Gradients


These gradients show how the XYZ color 45.5399, 43.0065, 38.2486 changes by changing the brightness by 10 percent. The first figure shows a shift by +10% for each color and the second figure -10%.


Similar to the brightness gradients but the following saturation gradients show a change of the XYZ color 45.5399, 43.0065, 38.2486 by changing the saturation by 10% instead.


 45.5399, 43.0065,
38.2486


 45.5399, 43.0065,
38.2486


359.7028,
358.6385, 354.0153

 32.0860, 29.8902,
25.8724

 82.7621, 79.7207,
73.6967

 21.5831, 19.7553,
16.5033


 107.2611,
104.0873, 97.6056

 13.6657, 12.2173,
9.7228


136.1724,
132.9729, 126.1958

 7.9687, 6.8918,
5.1123

169.8616,
166.7618, 159.8858

 4.1266, 3.3945,
2.2534

208.6938,
205.8385, 199.0943

 1.7740, 1.3410,
0.7050

253.0346,

 0.5019, 0.1726,

250.5872, 244.2396

0.0000

303.2491,
301.3924, 295.7405

0.0000, 0.0000,
0.0000

45.5399, 43.0065,
38.2486

45.5399, 43.0065,
38.2486

40.9672, 36.4761,
28.6617

50.8391, 50.5088,
49.5592

37.0855, 30.8721,
20.7112

56.8911, 59.0145,
62.6699

33.8619, 26.1539,
14.3060

63.7253, 68.5608,
77.6554

31.2590, 22.2759,
9.3449

71.3683, 79.1815,
94.5856

29.2357, 19.1881,
5.7148

78.7809, 90.4828,
107.9205

■ 27.7458, 16.8352,
3.2855

■ 79.5422, 92.0054,
108.1742

■ 26.7353, 15.1544,
1.9002

■ 26.2989, 14.3989,
1.3932

Harmonies

Analogous

The Analogous color harmony consists of three colors that are next to each other on the color wheel.



46.6201, 43.0065, 45.3464



45.5399, 43.0065, 38.2486



43.2141, 43.0065, 33.8732

Triad

The Triadic color harmony groups three colors that are evenly spaced from another and form a triangle on the color wheel.



45.5399, 43.0065, 38.2486



36.0599, 43.0065, 40.5581



41.4011, 43.0065, 64.3889

Complementary

The Complementary color scheme is a pair of colors which are on the opposite of each other on the color wheel.



45.5399, 43.0065, 38.2486



45.7859, 52.6193, 66.7751

Split Complementary

Split-complementary colors differ from the complementary color scheme. The scheme consists of three colors, the original color and two neighbors of the complement color.



38.6246, 43.0065, 62.7219



45.5399, 43.0065, 38.2486



35.6250, 43.0065, 48.3390

Square

The Square scheme is like the rectangle color scheme, but the four colors are evenly spaced on the color wheel.



45.5399, 43.0065, 38.2486



37.7597, 43.0065, 35.0933



36.5426, 43.0065, 56.6002



44.1600, 43.0065, 60.9213

Rectangle

The Rectangle color scheme consists of four colors that form a rectangle on the color wheel.



45.5399, 43.0065, 38.2486



41.3175, 43.0065, 32.7728



36.5426, 43.0065, 56.6002



40.4385, 43.0065, 64.4146

Sweetspot

The Sweet Spot groups the original color and five complimentary colors.



45.5411, 43.0085, 38.2495



87.7275, 89.7421, 92.9339



48.3438, 41.8734, 59.9640



18.6484, 19.0275, 19.6121



0.0000, 0.0000, 0.0000



20.3446, 21.4041, 23.3091

Same Dimension

The Same Dimension uses a secret algorithm to generate beautiful new colors.



45.5411, 43.0085, 38.2495



69.4240, 63.8523, 53.7936



50.2850, 52.4963, 39.8308



11.9625, 12.1157, 12.3201



16.6157, 9.1644, 0.8932



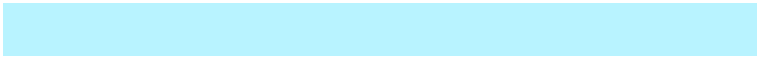
0.9788, 0.6120, 0.0665

Inverse Universe

The Inverse Universe completely reimagines the original color for something new.



45.7859, 52.6193, 66.7751



69.8729, 81.6639, 106.6878



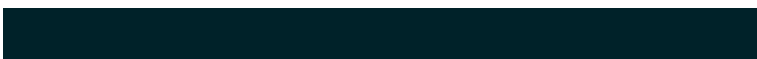
40.7227, 42.4929, 65.0873



11.9871, 13.0645, 15.1336



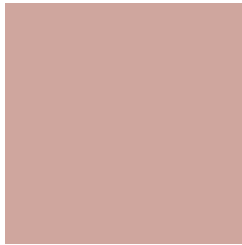
16.5924, 21.8315, 40.5319



0.9727, 1.3105, 2.2813

Previews

White Background



This preview shows how the XYZ color 45.5399, 43.0065, 38.2486 looks on a white background.

Color Contrast Check

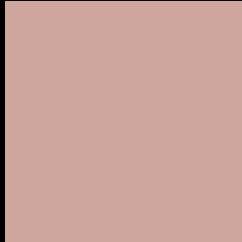
Large Text (above 18pt) WCAG AA × Fail

Any Text WCAG AA × Fail

Large Text (above 18pt) WCAG AAA × Fail

Any Text WCAG AAA × Fail

Black Background



This preview shows how the XYZ color 45.5399, 43.0065, 38.2486 looks on a black background.

Color Contrast Check

Large Text (above 18pt) WCAG AA ✓ Pass

Any Text WCAG AA ✓ Pass

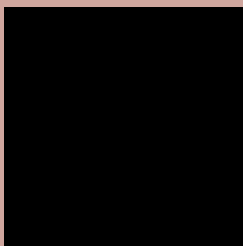
Large Text (above 18pt) WCAG AAA ✓ Pass

Any Text WCAG AAA ✓ Pass

If you want to check with other color combinations, try the [Color Contrast Checker](#).

XYZ 45.5399, 43.0065, 38.2486

Background



This preview shows how black text looks on a background with the XYZ color 45.5399, 43.0065, 38.2486.



This preview shows how white text looks on a background with the XYZ color 45.5399, 43.0065,

Color Blindness Simulation

Color vision deficiency is a very complex topic, and I could not describe the different causes any better than Wikipedia does, so if you want to learn more, you should check out their [article about color blindness](#).

Dichromacy



Original Color

45.5399, 43.0065, 38.2486

Protanopia

41.2322, 43.2494, 40.8251

Deuteranopia

43.8270, 42.9524, 37.8790



Tritanopia

47.2282, 42.8843, 46.8626

Trichromacy



Original Color

45.5399, 43.0065, 38.2486

Protanomaly

42.6714, 43.1546, 39.7989

Deuteranomaly

44.4456, 42.9961, 37.8548

Tritanomaly

46.4493, 42.8254, 43.3541

Monochromacy



Original Color

45.5399, 43.0065, 38.2486

Achromatopsia

41.7894, 43.9657, 47.8787

Achromatomaly

42.9383, 43.4808, 44.1597

CSS Examples

Text

The CSS property to change the color of the text to XYZ 45.5399, 43.0065, 38.2486 is called "color". The color property can be set on classes, ids or directly on the HTML element.

This example shows how text in the color `rgb(207, 166, 158)` looks like.

```
.text, #text, p{  
    color:rgb(207, 166, 158)  
}
```

If you want to add a text shadow in that color use the text-shadow property, you can generate a text shadow directly with our [CSS Text Shadow Generator](#).

Here you see how black text with a 4 pixel rgb(207, 166, 158) colored shadow looks like.

```
.shadow{ text-shadow: 4px 4px 2px rgb(207, 166, 158) }
```

Border

The CSS property to change the border of an element to XYZ 45.5399, 43.0065, 38.2486 is called "border". The border property can be set on classes, ids or directly on the HTML element.

This example shows the color as border, it can be applied via the CSS property "border" or "border-color".

```
.border, #border, table{ border:4px solid rgb(207, 166, 158) }
```


If only the border color should be changed use the property `border-color`.

```
.border{ border-color:rgb(207, 166, 158) }
```

If you want to add a box shadow in that color use:

Here you see how a box with a 4 pixel `rgb(207, 166, 158)` colored shadow looks like.

```
.boxshadow{ -moz-box-shadow:4px 4px 4px  
4px rgb(207, 166, 158); -webkit-box-  
shadow:4px 4px 4px 4px rgb(207, 166, 158);  
box-shadow:4px 4px 4px 4px rgb(207, 166,  
158) }
```

Background

The CSS property to change the background color of an element to XYZ 45.5399, 43.0065, 38.2486 is called "background". The background property can be set on classes, ids or directly on the HTML element.

```
.background, #background, body{  
background: rgb(207, 166, 158) }
```

If only the background color should be changed can be used:

```
.background{ background-color: rgb(207,  
166, 158) }
```

This example shows the color as background, it is applied via the CSS property "background".

To optimize and compress your CSS code, you can use our [online CSS compressor and optimizer](#) based on csstidy. If you want to create a linear or radial gradient as background or border, check our [CSS Gradient Generator](#).

Hey! You found this booklet interesting? Support Converting Colors with the new Membership Option!

The pro membership hides all ads, plus gives you double the colors in the color bucket, and more awesome pro features!

[Learn more, Memberships starting at \\$2.50/m!](#)

**Follow me
on Twitter!**

@ConvertingColor