

Converting Colors

XYZ(45.3809, 45.3705, 46.3291)

Have a look what the booklet for
XYZ(45.3809, 45.3705, 46.3291)
contains.

XYZ(45.2181, 45.1853, 46.3828)	3
<i>Conversions</i>	4
<i>Details</i>	6
<i>Harmonies</i>	12
<i>Previews</i>	24
<i>Color Blindness Simulation</i>	28
<i>CSS Examples</i>	31

Color

**XYZ(45.2181, 45.1853,
46.3828)**

Conversions

Conversions Part 1

Format	Color
Hex	C2AFAE
RGB	194, 175, 174
RGB Percent	76%, 69%, 68%
CMY	0.2392, 0.3137, 0.3176
CMYK	0.00, 0.10, 0.10, 0.24
HSL	3°, 14%, 72%
HSV	3°, 10%, 76%
XYZ	45.2181, 45.1853, 46.3828
YIQ	180.5670, 11.6450, 3.7170

Conversions

Conversions Part 2

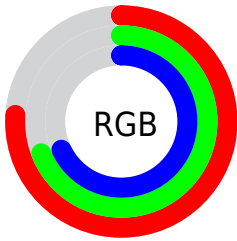
Format	Color
RYB	194, 175, 174
Decimal	12758958
CIELab	73.01, 6.65, 2.99
CIELCh	73, 7.287, 24.193
Yxy	45.1853, 0.3306, 0.3303
Android (android.graphics.Color)	4290949038 (0xFFC2AFAE)
YUV	180.5670, -3.2375, 11.7807
Hunter-Lab	67.2200, 2.4398, 6.1430

Details

The XYZ color **45.2181, 45.1853, 46.3828** is a light color, and the websafe version is hex **CCCCCC**. A complement of this color would be **46.2629, 51.0327, 58.4514**, and the grayscale version is **43.7009, 45.9767, 50.0687**.

A 20% lighter version of the original color is **82.5024, 83.3182, 85.8624**, and **21.4110, 21.1465, 21.3656** is the 20% darker color. If you saturate the color by 10%, you get **40.1170, 37.7940, 36.0156**, and if you desaturate by 10%, it is **51.0843, 53.6686, 58.3538**.

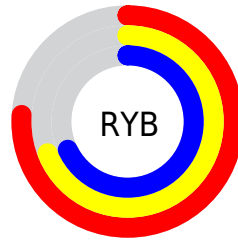
Distribution



Red (76%)

Green (69%)

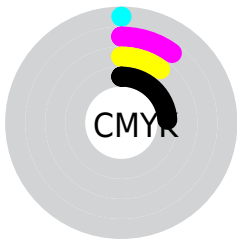
Blue (68%)



Red (76%)

Yellow (69%)

Blue (68%)

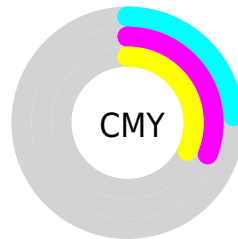


Cyan (0%)

Magenta (10%)

Yellow (10%)

Black (24%)



Cyan (24%)

Magenta (31%)

Yellow (32%)

Brightness & Saturation Gradients

These gradients show how the XYZ color 45.2181, 45.1853, 46.3828 changes by changing the brightness by 10 percent. The first figure shows a shift by +10% for each color and the second figure -10%.

Similar to the brightness gradients but the following saturation gradients show a change of the XYZ color 45.2181, 45.1853, 46.3828 by changing the saturation by 10% instead.

■ 45.2181, 45.1853,
46.3828

■ 45.2181, 45.1853,
46.3828

358.4250,
367.5235, 388.6677

■ 31.8313, 31.6034,
32.1972

■ 82.2826, 82.9984,
86.1319

■ 21.3876, 21.0588,
21.2461

106.6911,
107.9984, 112.5325

■ 13.5217, 13.1670,
13.1110

135.5041,
137.5732, 143.8417

■ 7.8682, 7.5436,
7.3734

169.0870,
172.1073, 180.4782

■ 4.0618, 3.8043,
3.6147

207.8052,
211.9849, 222.8606

■ 1.7372, 1.5647,
1.4165

252.0240,

■ 0.4794, 0.3336,

257.5906, 271.4072

0.1545

302.1088,
309.3086, 326.5368

■ 0.0000, 0.0000,
0.0000

■ 45.2181, 45.1853,
46.3828

■ 45.2181, 45.1853,
46.3828

■ 40.1170, 37.7940,
36.0156

■ 51.0843, 53.6686,
58.3538

■ 35.7459, 31.4448,
27.1814

■ 57.7414, 63.2795,
71.9896

■ 32.0726, 26.0926,
19.8084

■ 65.2186, 74.0594,
87.3516

■ 29.0609, 21.6867,
13.8177

■ 73.5425, 86.0456,
104.4972

■ 26.6714, 18.1721,
9.1232

■ 76.0583, 90.2094,
108.0112

■ 24.8605, 15.4880,
5.6291

■ 23.5791, 13.5661,
3.2265

■ 22.7698, 12.3270,
1.7865

■ 22.3540, 11.6808,
1.0764

Harmonies

Analogous

The Analogous color harmony consists of three colors that are next to each other on the color wheel.



45.4279, 45.1853, 49.9115



45.2181, 45.1853, 46.3828



44.3948, 45.1853, 43.7320

Triad

The Triadic color harmony groups three colors that are evenly spaced from another and form a triangle on the color wheel.



45.2181, 45.1853, 46.3828



40.9933, 45.1853, 45.2121



42.7002, 45.1853, 56.5052

Complementary

The Complementary color scheme is a pair of colors which are on the opposite of each other on the color wheel.



45.2181, 45.1853, 46.3828



46.2629, 51.0327, 58.4514

Split Complementary

Split-complementary colors differ from the complementary color scheme. The scheme consists of three colors, the original color and two neighbors of the complement color.



41.5316, 45.1853, 55.1039



45.2181, 45.1853, 46.3828



40.5587, 45.1853, 48.4935

Square

The Square scheme is like the rectangle color scheme, but the four colors are evenly spaced on the color wheel.



45.2181, 45.1853, 46.3828



41.9523, 45.1853, 43.0798



40.7538, 45.1853, 52.1272



43.9579, 45.1853, 55.8720

Rectangle

The Rectangle color scheme consists of four colors that form a rectangle on the color wheel.



45.2181, 45.1853, 46.3828



43.6172, 45.1853, 42.7598



40.7538, 45.1853, 52.1272



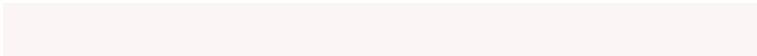
42.2842, 45.1853, 56.2544

Sweetspot

The Sweet Spot groups the original color and five complimentary colors.



45.2194, 45.1873, 46.3838



89.5007, 92.8247, 99.4872



47.0104, 45.5923, 56.7751



19.4051, 20.0463, 21.3891



0.0000, 0.0000, 0.0000



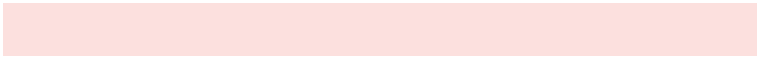
20.3446, 21.4041, 23.3091

Same Dimension

The Same Dimension uses a secret algorithm to generate beautiful new colors.



45.2194, 45.1873, 46.3838



80.0825, 79.1992, 80.2831



47.2376, 49.2238, 47.0565



10.1128, 10.1571, 10.4894



14.7150, 7.7157, 0.7137



0.6501, 0.3619, 0.0356

Inverse Universe

The Inverse Universe completely reimagines the original color for something new.



46.2629, 51.0327, 58.4514



82.2894, 91.5617, 105.8059



44.1273, 46.7613, 57.7395



10.3239, 11.3390, 12.9294



17.7263, 25.2091, 37.4882



0.7794, 1.1162, 1.6243

Previews

White Background



This preview shows how the XYZ color 45.2181, 45.1853, 46.3828 looks on a white background.

Color Contrast Check

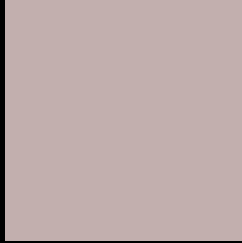
Large Text (above 18pt) WCAG AA × Fail

Any Text WCAG AA × Fail

Large Text (above 18pt) WCAG AAA × Fail

Any Text WCAG AAA × Fail

Black Background



This preview shows how the XYZ color 45.2181, 45.1853, 46.3828 looks on a black background.

Color Contrast Check

Large Text (above 18pt) WCAG AA ✓ Pass

Any Text WCAG AA ✓ Pass

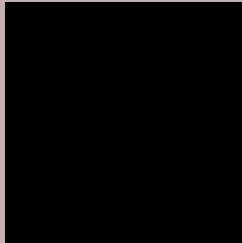
Large Text (above 18pt) WCAG AAA ✓ Pass

Any Text WCAG AAA ✓ Pass

If you want to check with other color combinations, try the [Color Contrast Checker](#).

XYZ 45.2181, 45.1853, 46.3828

Background



This preview shows how black text looks on a background with the XYZ color 45.2181, 45.1853, 46.3828.



This preview shows how white text looks on a background with the XYZ color 45.2181, 45.1853,

Color Blindness Simulation

Color vision deficiency is a very complex topic, and I could not describe the different causes any better than Wikipedia does, so if you want to learn more, you should check out their [article about color blindness](#).

Dichromacy



Original Color

45.2181, 45.1853, 46.3828

Protanopia

43.2853, 45.0427, 47.4870

Deuteranopia

45.8723, 44.9489, 46.3027



Tritanopia

46.6782, 45.2108, 53.2801

Trichromacy



Original Color

45.2181, 45.1853, 46.3828

Protanomaly

43.9535, 45.1042, 46.9468

Deuteranomaly

45.8020, 45.1984, 46.3545

Tritanomaly

46.0852, 45.2516, 50.5614

Monochromacy



Original Color

45.2181, 45.1853, 46.3828

Achromatopsia

43.9204, 46.2077, 50.3202

Achromatomaly

44.4057, 45.8937, 48.6374

CSS Examples

Text

The CSS property to change the color of the text to XYZ 45.2181, 45.1853, 46.3828 is called "color". The color property can be set on classes, ids or directly on the HTML element.

This example shows how text in the color `rgb(194, 175, 174)` looks like.

```
.text, #text, p{  
    color:rgb(194, 175, 174)  
}
```

If you want to add a text shadow in that color use the text-shadow property, you can generate a text shadow directly with our [CSS Text Shadow Generator](#).

Here you see how black text with a 4 pixel rgb(194, 175, 174) colored shadow looks like.

```
.shadow{ text-shadow: 4px 4px 2px rgb(194, 175, 174) }
```

Border

The CSS property to change the border of an element to XYZ 45.2181, 45.1853, 46.3828 is called "border". The border property can be set on classes, ids or directly on the HTML element.

This example shows the color as border, it can be applied via the CSS property "border" or "border-color".

```
.border, #border, table{ border:4px solid rgb(194, 175, 174) }
```


If only the border color should be changed use the property `border-color`.

```
.border{ border-color:rgb(194, 175, 174) }
```

If you want to add a box shadow in that color use:

Here you see how a box with a 4 pixel `rgb(194, 175, 174)` colored shadow looks like.

```
.boxshadow{ -moz-box-shadow:4px 4px 4px  
4px rgb(194, 175, 174); -webkit-box-  
shadow:4px 4px 4px 4px rgb(194, 175, 174);  
box-shadow:4px 4px 4px 4px rgb(194, 175,  
174) }
```

Background

The CSS property to change the background color of an element to XYZ 45.2181, 45.1853, 46.3828 is called "background". The background property can be set on classes, ids or directly on the HTML element.

```
.background, #background, body{  
background: rgb(194, 175, 174) }
```

If only the background color should be changed can be used:

```
.background{ background-color: rgb(194,  
175, 174) }
```

This example shows the color as background, it is applied via the CSS property "background".

To optimize and compress your CSS code, you can use our [online CSS compressor and optimizer](#) based on csstidy. If you want to create a linear or radial gradient as background or border, check our [CSS Gradient Generator](#).

Hey! You found this booklet interesting? Support Converting Colors with the new Membership Option!

The pro membership hides all ads, plus gives you double the colors in the color bucket, and more awesome pro features!

[Learn more, Memberships starting at \\$2.50/m!](#)

**Follow me
on Twitter!**

@ConvertingColor