

Converting Colors

XYZ(45.3903, 44.1657, 42.3508)

Have a look what the booklet for
XYZ(45.3903, 44.1657, 42.3508)
contains.

XYZ(45.5332, 44.2965, 42.2266)	3
<i>Conversions</i>	4
<i>Details</i>	6
<i>Harmonies</i>	12
<i>Previews</i>	24
<i>Color Blindness Simulation</i>	28
<i>CSS Examples</i>	31

Color

**XYZ(45.5332, 44.2965,
42.2266)**

Conversions

Conversions Part 1

Format	Color
Hex	C9ABA6
RGB	201, 171, 166
RGB Percent	79%, 67%, 65%
CMY	0.2118, 0.3294, 0.3490
CMYK	0.00, 0.15, 0.17, 0.21
HSL	9°, 24%, 72%
HSV	9°, 17%, 79%
XYZ	45.5332, 44.2965, 42.2266
YIQ	179.4000, 19.4850, 4.8050

Conversions

Conversions Part 2

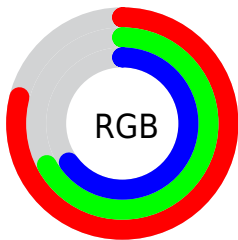
Format	Color
R _Y B	201, 172, 166
Decimal	13216678
CIE Lab	72.43, 10.08, 6.61
CIE LCh	72, 12.057, 33.244
Yxy	44.2965, 0.3448, 0.3354
Android (android.graphics.Color)	4291406758 (0xFFC9ABA6)
YUV	179.4000, -6.6062, 18.9432
Hunter-Lab	66.5556, 5.6462, 8.9720

Details

The XYZ color **45.5332, 44.2965, 42.2266** is a light color, and the websafe version is hex **CC9999**. A complement of this color would be **46.0080, 51.8025, 62.8326**, and the grayscale version is **43.0890, 45.3330, 49.3677**.

A 20% lighter version of the original color is **81.4875, 80.8732, 79.7218**, and **21.6667, 20.6116, 18.7561** is the 20% darker color. If you saturate the color by 10%, you get **40.7872, 37.5280, 32.2478**, and if you desaturate by 10%, it is **50.9939, 52.0324, 53.8664**.

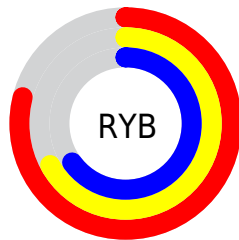
Distribution



Red (79%)

Green (67%)

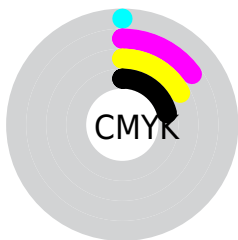
Blue (65%)



Red (79%)

Yellow (67%)

Blue (65%)

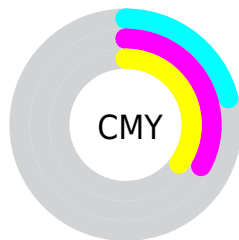


Cyan (0%)

Magenta (15%)

Yellow (17%)

Black (21%)



Cyan (21%)


Magenta (33%)


Yellow (35%)

Brightness & Saturation Gradients


These gradients show how the XYZ color 45.5332, 44.2965, 42.2266 changes by changing the brightness by 10 percent. The first figure shows a shift by +10% for each color and the second figure -10%.

Similar to the brightness gradients but the following saturation gradients show a change of the XYZ color 45.5332, 44.2965, 42.2266 by changing the saturation by 10% instead.


 45.5332, 44.2965,
42.2266


 45.5332, 44.2965,
42.2266

359.6762,
363.9168, 371.2488

 32.0807, 30.9037,
28.9519

 82.7521, 81.6637,
79.8163

 21.5790, 20.5255,
18.7991


 107.2492,
106.4069, 104.9683

 13.6627, 12.7776,
11.3499


136.1585,
135.7023, 134.9164

 7.9666, 7.2756,
6.1856

169.8455,
169.9344, 170.0793

 4.1252, 3.6350,
2.8876

208.6754,
209.4875, 210.8754

 1.7732, 1.4716,
1.0376

253.0135,

 0.5014, 0.2686,

254.7460, 257.7234

0.0000

303.2254,
306.0943, 311.0416

■ 0.0000, 0.0000,
0.0000

■ 45.5332, 44.2965,
42.2266

■ 45.5332, 44.2965,
42.2266

■ 40.7872, 37.5280,
32.2478

■ 50.9939, 52.0324,
53.8664

■ 36.7227, 31.6831,
23.8514

■ 57.1936, 60.7656,
67.2353

■ 33.3092, 26.7233,
16.9568

■ 64.1597, 70.5318,
82.4009

■ 30.5123, 22.6053,
11.4752

■ 71.9175, 81.3636,
99.4264

■ 28.2947, 19.2821,
7.3080

■ 77.8975, 91.1576,
108.0973

■ 26.6147, 16.7018,
4.3443

■ 25.4249, 14.8064,
2.4547

■ 24.6653, 13.5275,
1.4604

■ 24.5204, 13.2834,
1.2716

Harmonies

Analogous

The Analogous color harmony consists of three colors that are next to each other on the color wheel.



46.2188, 44.2965, 47.5868



45.5332, 44.2965, 42.2266



43.9269, 44.2965, 38.7185

Triad

The Triadic color harmony groups three colors that are evenly spaced from another and form a triangle on the color wheel.



45.5332, 44.2965, 42.2266



38.6347, 44.2965, 43.2612



42.3290, 44.2965, 60.5812

Complementary

The Complementary color scheme is a pair of colors which are on the opposite of each other on the color wheel.



45.5332, 44.2965, 42.2266



46.0080, 51.8025, 62.8326

Split Complementary

Split-complementary colors differ from the complementary color scheme. The scheme consists of three colors, the original color and two neighbors of the complement color.



40.3293, 44.2965, 59.1871



45.5332, 44.2965, 42.2266



38.2382, 44.2965, 48.8817

Square

The Square scheme is like the rectangle color scheme, but the four colors are evenly spaced on the color wheel.



45.5332, 44.2965, 42.2266



39.9500, 44.2965, 39.2805



38.8486, 44.2965, 54.7800



44.3310, 44.2965, 58.4481

Rectangle

The Rectangle color scheme consists of four colors that form a rectangle on the color wheel.



45.5332, 44.2965, 42.2266



42.5743, 44.2965, 37.7373



38.8486, 44.2965, 54.7800



41.6342, 44.2965, 60.5101

Sweetspot

The Sweet Spot groups the original color and five complimentary colors.



45.5344, 44.2985, 42.2275



89.6772, 92.4311, 97.3159



47.7258, 43.6912, 58.3418



19.0387, 19.5640, 20.4944



0.0000, 0.0000, 0.0000



20.3446, 21.4041, 23.3091

Same Dimension

The Same Dimension uses a secret algorithm to generate beautiful new colors.



45.5344, 44.2985, 42.2275



74.6621, 71.1512, 65.3347



48.9896, 51.2088, 43.3792



10.7542, 10.8775, 11.0955



15.4583, 8.4337, 0.8131



0.7725, 0.4805, 0.0520

Inverse Universe

The Inverse Universe completely reimagines the original color for something new.



46.0080, 51.8025, 62.8326



75.6246, 86.4321, 107.3050



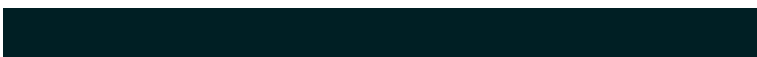
42.3557, 44.4980, 61.6152



10.8125, 11.7990, 13.6251



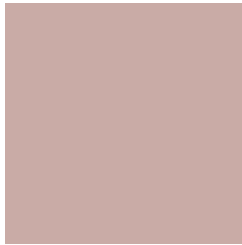
15.9876, 21.3690, 38.0264



0.7934, 1.0846, 1.8127

Previews

White Background



This preview shows how the XYZ color 45.5332, 44.2965, 42.2266 looks on a white background.

Color Contrast Check

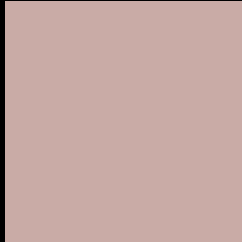
Large Text (above 18pt) WCAG AA × Fail

Any Text WCAG AA × Fail

Large Text (above 18pt) WCAG AAA × Fail

Any Text WCAG AAA × Fail

Black Background



This preview shows how the XYZ color 45.5332, 44.2965, 42.2266 looks on a black background.

Color Contrast Check

Large Text (above 18pt) WCAG AA ✓ Pass

Any Text WCAG AA ✓ Pass

Large Text (above 18pt) WCAG AAA ✓ Pass

Any Text WCAG AAA ✓ Pass

If you want to check with other color combinations, try the [Color Contrast Checker](#).

XYZ 45.5332, 44.2965, 42.2266

Background



This preview shows how black text looks on a background with the XYZ color 45.5332, 44.2965, 42.2266.



This preview shows how white text looks on a background with the XYZ color 45.5332, 44.2965,

Color Blindness Simulation

Color vision deficiency is a very complex topic, and I could not describe the different causes any better than Wikipedia does, so if you want to learn more, you should check out their [article about color blindness](#).

Dichromacy



Original Color

45.5332, 44.2965, 42.2266

Protanopia

42.4120, 44.3761, 43.8662

Deuteranopia

45.1886, 44.4003, 42.2648



Tritanopia

47.2601, 44.4498, 50.3448

Trichromacy



Original Color

45.5332, 44.2965, 42.2266

Protanomaly

43.6331, 44.4342, 43.3227

Deuteranomaly

45.4549, 44.5376, 42.2773

Tritanomaly

46.5683, 44.4406, 47.1978

Monochromacy



Original Color

45.5332, 44.2965, 42.2266

Achromatopsia

42.8472, 45.0786, 49.0906

Achromatomaly

43.6588, 44.6715, 46.3658

CSS Examples

Text

The CSS property to change the color of the text to XYZ 45.5332, 44.2965, 42.2266 is called "color". The color property can be set on classes, ids or directly on the HTML element.

This example shows how text in the color `rgb(201, 171, 166)` looks like.

```
.text, #text, p{  
    color:rgb(201, 171, 166)  
}
```

If you want to add a text shadow in that color use the text-shadow property, you can generate a text shadow directly with our [CSS Text Shadow Generator](#).

Here you see how black text with a 4 pixel rgb(201, 171, 166) colored shadow looks like.

```
.shadow{ text-shadow: 4px 4px 2px rgb(201, 171, 166) }
```

Border

The CSS property to change the border of an element to XYZ 45.5332, 44.2965, 42.2266 is called "border". The border property can be set on classes, ids or directly on the HTML element.

This example shows the color as border, it can be applied via the CSS property "border" or "border-color".

```
.border, #border, table{ border:4px solid rgb(201, 171, 166) }
```


If only the border color should be changed use the property `border-color`.

```
.border{ border-color:rgb(201, 171, 166) }
```

If you want to add a box shadow in that color use:

Here you see how a box with a 4 pixel `rgb(201, 171, 166)` colored shadow looks like.

```
.boxshadow{ -moz-box-shadow:4px 4px 4px  
4px rgb(201, 171, 166); -webkit-box-  
shadow:4px 4px 4px 4px rgb(201, 171, 166);  
box-shadow:4px 4px 4px 4px rgb(201, 171,  
166) }
```

Background

The CSS property to change the background color of an element to XYZ 45.5332, 44.2965, 42.2266 is called "background". The background property can be set on classes, ids or directly on the HTML element.

```
.background, #background, body{  
background: rgb(201, 171, 166) }
```

If only the background color should be changed can be used:

```
.background{ background-color: rgb(201,  
171, 166) }
```

This example shows the color as background, it is applied via the CSS property "background".

To optimize and compress your CSS code, you can use our [online CSS compressor and optimizer](#) based on csstidy. If you want to create a linear or radial gradient as background or border, check our [CSS Gradient Generator](#).

Hey! You found this booklet interesting? Support Converting Colors with the new Membership Option!

The pro membership hides all ads, plus gives you double the colors in the color bucket, and more awesome pro features!

[Learn more, Memberships starting at \\$2.50/m!](#)

**Follow me
on Twitter!**

@ConvertingColor