

Converting Colors

XYZ(45.4088, 41.4984, 39.1733)

Have a look what the booklet for
XYZ(45.4088, 41.4984, 39.1733)
contains.

XYZ(45.4724, 41.6183, 39.3547)	3
<i>Conversions</i>	4
<i>Details</i>	6
<i>Harmonies</i>	12
<i>Previews</i>	24
<i>Color Blindness Simulation</i>	28
<i>CSS Examples</i>	31

Color

**XYZ(45.4724, 41.6183,
39.3547)**

Conversions

Conversions Part 1

Format	Color
Hex	D1A1A1
RGB	209, 161, 161
RGB Percent	82%, 63%, 63%
CMY	0.1804, 0.3686, 0.3686
CMYK	0.00, 0.23, 0.23, 0.18
HSL	0°, 34%, 73%
HSV	0°, 23%, 82%
XYZ	45.4724, 41.6183, 39.3547
YIQ	175.3520, 28.6080, 10.1760

Conversions

Conversions Part 2

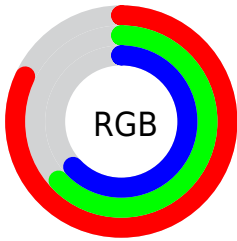
Format	Color
R_{YB}	209, 161, 161
Decimal	13738401
CIE _{Lab}	70.61, 17.75, 6.86
CIE _{LCh}	71, 19.029, 21.121
Yxy	41.6183, 0.3596, 0.3291
Android (android.graphics.Color)	4291928481 (0xFFD1A1A1)
YUV	175.3520, -7.0755, 29.5093
Hunter-Lab	64.5122, 12.9219, 8.9896

Details

The XYZ color **45.4724, 41.6183, 39.3547** is a light color, and the websafe version is hex **CC9999**. A complement of this color would be **49.0064, 57.7798, 68.8915**, and the grayscale version is **40.9560, 43.0889, 46.9239**.

A 20% lighter version of the original color is **78.1905, 75.3296, 75.3847**, and **21.6095, 18.9331, 17.2674** is the 20% darker color. If you saturate the color by 10%, you get **40.4294, 34.2393, 29.3280**, and if you desaturate by 10%, it is **51.4361, 50.3451, 51.2091**.

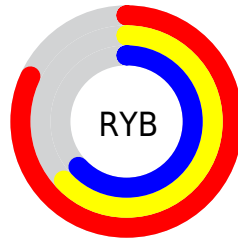
Distribution



Red (82%)

Green (63%)

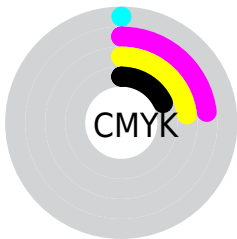
Blue (63%)



Red (82%)

Yellow (63%)

Blue (63%)

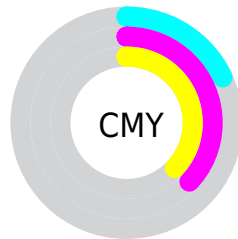


Cyan (0%)

Magenta (23%)

Yellow (23%)

Black (18%)



Cyan (18%)


Magenta (37%)

Yellow (37%)

Brightness & Saturation Gradients


These gradients show how the XYZ color 45.4724, 41.6183, 39.3547 changes by changing the brightness by 10 percent. The first figure shows a shift by +10% for each color and the second figure -10%.


Similar to the brightness gradients but the following saturation gradients show a change of the XYZ color 45.4724, 41.6183, 39.3547 by changing the saturation by 10% instead.


 45.4724, 41.6183,
39.3547


 45.4724, 41.6183,
39.3547


359.4350,
352.8982, 358.8671

 32.0325, 28.8025,
26.7258


 82.6616, 77.6216,
75.4062

 21.5420, 18.9315,
17.1368


 107.1416,
101.5779, 99.6658

 13.6355, 11.6208,
10.1691


136.0323,
130.0166, 128.6395

 7.9476, 6.4860,
5.4041

169.6992,
163.3219, 162.7458

 4.1129, 3.1428,
2.4234

208.5076,
201.8784, 202.4031

 1.7662, 1.2067,
0.7992

252.8228,

 0.4972, 0.0672,

246.0703, 248.0301

0.0000

303.0101,
296.2821, 300.0452

0.0000, 0.0000,
0.0000

45.4724, 41.6183,
39.3547

45.4724, 41.6183,
39.3547

40.4294, 34.2393,
29.3280

51.4361, 50.3451,
51.2091

36.2582, 28.1355,
21.0358

58.3596, 60.4760,
64.9730

32.9103, 23.2365,
14.3805

66.2838, 72.0712,
80.7264

30.3312, 19.4625,
9.2537

75.2462, 85.1856,
98.5440

28.4600, 16.7243,
5.5340

80.1046, 92.2954,
108.2006

■ 27.2263, 14.9189,
3.0819

■ 26.5456, 13.9227,
1.7291

■ 26.2948, 13.5558,
1.2306

Harmonies

Analogous

The Analogous color harmony consists of three colors that are next to each other on the color wheel.



45.8398, 41.6183, 48.0421



45.4724, 41.6183, 39.3547



43.4767, 41.6183, 33.1222

Triad

The Triadic color harmony groups three colors that are evenly spaced from another and form a triangle on the color wheel.



45.4724, 41.6183, 39.3547



35.0321, 41.6183, 35.2877



38.6306, 41.6183, 64.6780

Complementary

The Complementary color scheme is a pair of colors which are on the opposite of each other on the color wheel.



45.4724, 41.6183, 39.3547



49.0064, 57.7798, 68.8915

Split Complementary

Split-complementary colors differ from the complementary color scheme. The scheme consists of three colors, the original color and two neighbors of the complement color.



35.8802, 41.6183, 60.1844



45.4724, 41.6183, 39.3547



33.8761, 41.6183, 42.6936

Square

The Square scheme is like the rectangle color scheme, but the four colors are evenly spaced on the color wheel.



45.4724, 41.6183, 39.3547



37.4169, 41.6183, 30.9995



34.1781, 41.6183, 51.8492



41.7771, 41.6183, 63.4733

Rectangle

The Rectangle color scheme consists of four colors that form a rectangle on the color wheel.



45.4724, 41.6183, 39.3547



41.5467, 41.6183, 30.8198



34.1781, 41.6183, 51.8492



37.6317, 41.6183, 63.7641

Sweetspot

The Sweet Spot groups the original color and five complimentary colors.



45.4735, 41.6202, 39.3556



86.8761, 88.0394, 92.6501



50.5484, 43.6490, 66.0828



18.4520, 18.6347, 19.5466



0.0000, 0.0000, 0.0000



20.3446, 21.4041, 23.3091

Same Dimension

The Same Dimension uses a secret algorithm to generate beautiful new colors.



45.4735, 41.6202, 39.3556



66.9086, 58.8215, 52.9551



50.0769, 50.8269, 40.8900



11.8089, 11.8084, 12.2689



16.2126, 8.3581, 0.7588



0.9065, 0.4674, 0.0424

Inverse Universe

The Inverse Universe completely reimagines the original color for something new.



49.0064, 57.7798, 68.8915



73.4795, 88.8771, 107.8900



43.5560, 46.8789, 67.0747



12.1583, 13.4069, 15.1906



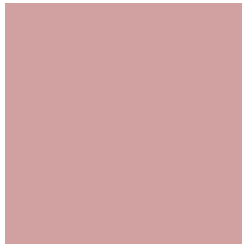
21.1513, 30.9491, 42.0515



1.1827, 1.7305, 2.3513

Previews

White Background



This preview shows how the XYZ color 45.4724, 41.6183, 39.3547 looks on a white background.

Color Contrast Check

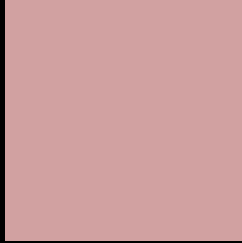
Large Text (above 18pt) WCAG AA × Fail

Any Text WCAG AA × Fail

Large Text (above 18pt) WCAG AAA × Fail

Any Text WCAG AAA × Fail

Black Background



This preview shows how the XYZ color 45.4724, 41.6183, 39.3547 looks on a black background.

Color Contrast Check

Large Text (above 18pt) WCAG AA ✓ Pass

Any Text WCAG AA ✓ Pass

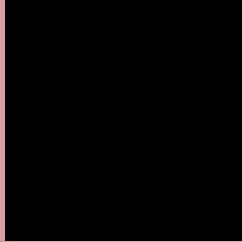
Large Text (above 18pt) WCAG AAA ✓ Pass

Any Text WCAG AAA ✓ Pass

If you want to check with other color combinations, try the [Color Contrast Checker](#).

XYZ 45.4724, 41.6183, 39.3547

Background



This preview shows how black text looks on a background with the XYZ color 45.4724, 41.6183, 39.3547.



This preview shows how white text looks on a background with the XYZ color 45.4724, 41.6183,

Color Blindness Simulation

Color vision deficiency is a very complex topic, and I could not describe the different causes any better than Wikipedia does, so if you want to learn more, you should check out their [article about color blindness](#).

Dichromacy



Original Color

45.4724, 41.6183, 39.3547

Protanopia

39.8590, 41.6422, 42.4962

Deuteranopia

42.6696, 41.7776, 39.0727



Tritanopia

46.4229, 41.4765, 44.5887

Trichromacy



Original Color

45.4724, 41.6183, 39.3547

Protanomaly

41.7804, 41.5407, 41.4134

Deuteranomaly

43.6197, 41.7277, 39.0129

Tritanomaly

46.2170, 41.6704, 42.6531

Monochromacy



Original Color

45.4724, 41.6183, 39.3547

Achromatopsia

40.7470, 42.8690, 46.6844

Achromatomaly

42.1239, 42.2165, 43.9586

CSS Examples

Text

The CSS property to change the color of the text to XYZ 45.4724, 41.6183, 39.3547 is called "color". The color property can be set on classes, ids or directly on the HTML element.

This example shows how text in the color `rgb(209, 161, 161)` looks like.

```
.text, #text, p{  
    color:rgb(209, 161, 161)  
}
```

If you want to add a text shadow in that color use the text-shadow property, you can generate a text shadow directly with our [CSS Text Shadow Generator](#).

Here you see how black text with a 4 pixel rgb(209, 161, 161) colored shadow looks like.

```
.shadow{ text-shadow: 4px 4px 2px rgb(209, 161, 161) }
```

Border

The CSS property to change the border of an element to XYZ 45.4724, 41.6183, 39.3547 is called "border". The border property can be set on classes, ids or directly on the HTML element.

This example shows the color as border, it can be applied via the CSS property "border" or "border-color".

```
.border, #border, table{ border:4px solid rgb(209, 161, 161) }
```


If only the border color should be changed use the property border-color.

```
.border{ border-color:rgb(209, 161, 161) }
```

If you want to add a box shadow in that color use:

Here you see how a box with a 4 pixel rgb(209, 161, 161) colored shadow looks like.

```
.boxshadow{ -moz-box-shadow:4px 4px 4px  
4px rgb(209, 161, 161); -webkit-box-  
shadow:4px 4px 4px 4px rgb(209, 161, 161);  
box-shadow:4px 4px 4px 4px rgb(209, 161,  
161) }
```

Background

The CSS property to change the background color of an element to XYZ 45.4724, 41.6183, 39.3547 is called "background". The background property can be set on classes, ids or directly on the HTML element.

```
.background, #background, body{  
background: rgb(209, 161, 161) }
```

If only the background color should be changed can be used:

```
.background{ background-color: rgb(209,  
161, 161) }
```

This example shows the color as background, it is applied via the CSS property "background".

To optimize and compress your CSS code, you can use our [online CSS compressor and optimizer](#) based on csstidy. If you want to create a linear or radial gradient as background or border, check our [CSS Gradient Generator](#).

Hey! You found this booklet interesting? Support Converting Colors with the new Membership Option!

The pro membership hides all ads, plus gives you double the colors in the color bucket, and more awesome pro features!

[Learn more, Memberships starting at \\$2.50/m!](#)

**Follow me
on Twitter!**

@ConvertingColor