

Converting Colors

XYZ(45.4490, 45.8085, 47.8784)

Have a look what the booklet for
XYZ(45.4490, 45.8085, 47.8784)
contains.

XYZ(45.3962, 45.8251, 48.0475)	3
<i>Conversions</i>	4
<i>Details</i>	6
<i>Harmonies</i>	12
<i>Previews</i>	24
<i>Color Blindness Simulation</i>	28
<i>CSS Examples</i>	31

Color

**XYZ(45.3962, 45.8251,
48.0475)**

Conversions

Conversions Part 1

Format	Color
Hex	C0B1B1
RGB	192, 177, 177
RGB Percent	75%, 69%, 69%
CMY	0.2471, 0.3059, 0.3059
CMYK	0.00, 0.08, 0.08, 0.25
HSL	0°, 11%, 72%
HSV	0°, 8%, 75%
XYZ	45.3962, 45.8251, 48.0475
YIQ	181.4850, 8.9400, 3.1800

Conversions

Conversions Part 2

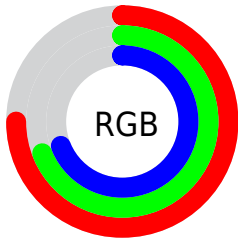
Format	Color
RYB	192, 177, 177
Decimal	12628401
CIELab	73.43, 5.36, 1.93
CIELCh	73, 5.692, 19.797
Yxy	45.8251, 0.3260, 0.3290
Android (android.graphics.Color)	4290818481 (0xFFC0B1B1)
YUV	181.4850, -2.2111, 9.2217
Hunter-Lab	67.6942, 1.2384, 5.3036

Details

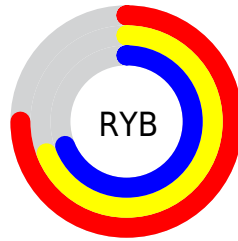
The XYZ color **45.3962, 45.8251, 48.0475** is a light color, and the websafe version is hex **CCCCCC**. A complement of this color would be **46.4954, 50.8513, 57.2344**, and the grayscale version is **44.1929, 46.4944, 50.6324**.

A 20% lighter version of the original color is **82.5583, 84.1175, 88.9758**, and **21.3270, 21.2738, 22.0510** is the 20% darker color. If you saturate the color by 10%, you get **40.0872, 38.0570, 37.4910**, and if you desaturate by 10%, it is **51.5104, 54.7717, 60.2019**.

Distribution



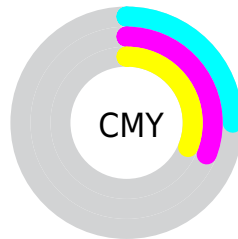
- Red (75%)
- Green (69%)
- Blue (69%)



- Red (75%)
- Yellow (69%)
- Blue (69%)



- Cyan (0%)
- Magenta (8%)
- Yellow (8%)
- Black (25%)



- Cyan (25%)
- Magenta (31%)
- Yellow (31%)

Brightness & Saturation Gradients

These gradients show how the XYZ color 45.3962, 45.8251, 48.0475 changes by changing the brightness by 10 percent. The first figure shows a shift by +10% for each color and the second figure -10%.

Similar to the brightness gradients but the following saturation gradients show a change of the XYZ color 45.3962, 45.8251, 48.0475 by changing the saturation by 10% instead.

■ 45.3962, 45.8251,
48.0475

■ 45.3962, 45.8251,
48.0475

359.1326,
370.1050, 395.4945

■ 31.9722, 32.1078,
33.5042

■ 82.5480, 83.9572,
88.6414

■ 21.4957, 21.4439,
22.2387

107.0066,
109.1408, 115.5291

■ 13.6014, 13.4488,
13.8324

135.8741,
138.9153, 147.3688

■ 7.9238, 7.7383,
7.8668

169.5158,
173.6651, 184.5789

■ 4.0976, 3.9280,
3.9233

208.2972,
213.7745, 227.5780

■ 1.7575, 1.6334,
1.5834

252.5835,

■ 0.4919, 0.3799,

259.6281, 276.7846

0.2789

302.7402,
311.6101, 332.6172

0.0000, 0.0000,
0.0000

45.3962, 45.8251,
48.0475

45.3962, 45.8251,
48.0475

40.0872, 38.0570,
37.4910

51.5104, 54.7717,
60.2019

35.5463, 31.4124,
28.4633

58.4574, 64.9365,
74.0138

31.7390, 25.8414,
20.8944

66.2680, 76.3651,
89.5431

28.6269, 21.2875,
14.7077

74.9706, 89.0987,
106.8459

26.1681, 17.6894,
9.8199

75.5485, 89.9466,
107.9873

■ 24.3159, 14.9790,
6.1385

■ 23.0179, 13.0794,
3.5587

■ 22.2123, 11.9004,
1.9581

■ 21.8075, 11.3079,
1.1539

Harmonies

Analogous

The Analogous color harmony consists of three colors that are next to each other on the color wheel.



45.4821, 45.8251, 50.8810



45.3962, 45.8251, 48.0475



44.8128, 45.8251, 45.7931

Triad

The Triadic color harmony groups three colors that are evenly spaced from another and form a triangle on the color wheel.



45.3962, 45.8251, 48.0475



42.0983, 45.8251, 46.4130



43.2145, 45.8251, 55.5343

Complementary

The Complementary color scheme is a pair of colors which are on the opposite of each other on the color wheel.



45.3962, 45.8251, 48.0475



46.4954, 50.8513, 57.2344

Split Complementary

Split-complementary colors differ from the complementary color scheme. The scheme consists of three colors, the original color and two neighbors of the complement color.



42.3217, 45.8251, 54.2364



45.3962, 45.8251, 48.0475



41.6839, 45.8251, 48.9232

Square

The Square scheme is like the rectangle color scheme, but the four colors are evenly spaced on the color wheel.



45.3962, 45.8251, 48.0475



42.9052, 45.8251, 44.8749



41.7650, 45.8251, 51.7908



44.2121, 45.8251, 55.2778

Rectangle

The Rectangle color scheme consists of four colors that form a rectangle on the color wheel.



45.3962, 45.8251, 48.0475



44.2252, 45.8251, 44.8874



41.7650, 45.8251, 51.7908



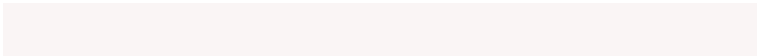
42.8924, 45.8251, 55.2635

Sweetspot

The Sweet Spot groups the original color and five complimentary colors.



45.3975, 45.8271, 48.0485



88.4781, 92.1383, 99.4290



46.9754, 46.4572, 56.3610



19.0061, 19.8028, 21.3798



92.9021, 97.7402, 106.4391



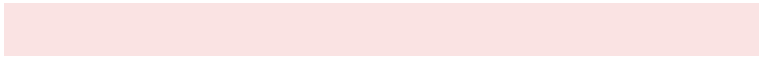
19.4759, 20.4902, 22.3138

Same Dimension

The Same Dimension uses a secret algorithm to generate beautiful new colors.



45.3975, 45.8271, 48.0485



80.8926, 81.0391, 84.3480



46.9192, 48.8705, 48.5557



10.0734, 10.0783, 10.4762



14.6279, 7.5415, 0.6847



0.6321, 0.3260, 0.0296

Inverse Universe

The Inverse Universe completely reimagines the original color for something new.



46.4954, 50.8513, 57.2344



83.2003, 91.5993, 103.6556



44.8911, 47.6426, 56.6997



10.3684, 11.4281, 12.9442



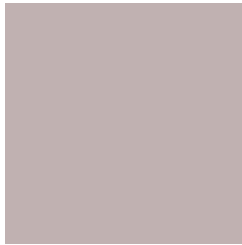
19.0797, 27.9159, 37.9393



0.8244, 1.2063, 1.6393

Previews

White Background



This preview shows how the XYZ color 45.3962, 45.8251, 48.0475 looks on a white background.

Color Contrast Check

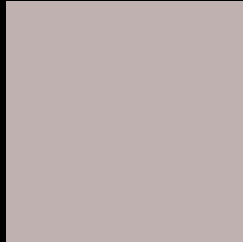
Large Text (above 18pt) WCAG AA × Fail

Any Text WCAG AA × Fail

Large Text (above 18pt) WCAG AAA × Fail

Any Text WCAG AAA × Fail

Black Background



This preview shows how the XYZ color 45.3962, 45.8251, 48.0475 looks on a black background.

Color Contrast Check

Large Text (above 18pt) WCAG AA ✓ Pass

Any Text WCAG AA ✓ Pass

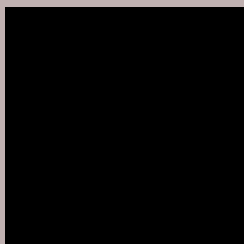
Large Text (above 18pt) WCAG AAA ✓ Pass

Any Text WCAG AAA ✓ Pass

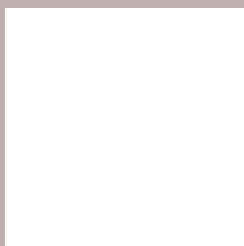
If you want to check with other color combinations, try the [Color Contrast Checker](#).

XYZ 45.3962, 45.8251, 48.0475

Background



This preview shows how black text looks on a background with the XYZ color 45.3962, 45.8251, 48.0475.



This preview shows how white text looks on a background with the XYZ color 45.3962, 45.8251,

Color Blindness Simulation

Color vision deficiency is a very complex topic, and I could not describe the different causes any better than Wikipedia does, so if you want to learn more, you should check out their [article about color blindness](#).

Dichromacy



Original Color

45.3962, 45.8251, 48.0475

Protanopia

44.1243, 46.0472, 48.6819

Deuteranopia

46.8190, 45.9764, 48.0017



Tritanopia

46.7634, 45.8034, 54.5204

Trichromacy



Original Color

45.3962, 45.8251, 48.0475

Protanomaly

44.6495, 46.0193, 48.6488

Deuteranomaly

46.2261, 45.9608, 48.0299

Tritanomaly

46.2746, 45.8909, 52.3178

Monochromacy



Original Color

45.3962, 45.8251, 48.0475

Achromatopsia

43.9204, 46.2077, 50.3202

Achromatomaly

44.5671, 46.2521, 49.7586

CSS Examples

Text

The CSS property to change the color of the text to XYZ 45.3962, 45.8251, 48.0475 is called "color". The color property can be set on classes, ids or directly on the HTML element.

This example shows how text in the color `rgb(192, 177, 177)` looks like.

```
.text, #text, p{  
    color:rgb(192, 177, 177)  
}
```

If you want to add a text shadow in that color use the text-shadow property, you can generate a text shadow directly with our [CSS Text Shadow Generator](#).

Here you see how black text with a 4 pixel rgb(192, 177, 177) colored shadow looks like.

```
.shadow{ text-shadow: 4px 4px 2px rgb(192, 177, 177) }
```

Border

The CSS property to change the border of an element to XYZ 45.3962, 45.8251, 48.0475 is called "border". The border property can be set on classes, ids or directly on the HTML element.

This example shows the color as border, it can be applied via the CSS property "border" or "border-color".

```
.border, #border, table{ border:4px solid rgb(192, 177, 177) }
```


If only the border color should be changed use the property `border-color`.

```
.border{ border-color:rgb(192, 177, 177) }
```

If you want to add a box shadow in that color use:

Here you see how a box with a 4 pixel `rgb(192, 177, 177)` colored shadow looks like.

```
.boxshadow{ -moz-box-shadow:4px 4px 4px  
4px rgb(192, 177, 177); -webkit-box-  
shadow:4px 4px 4px 4px rgb(192, 177, 177);  
box-shadow:4px 4px 4px 4px rgb(192, 177,  
177) }
```

Background

The CSS property to change the background color of an element to XYZ 45.3962, 45.8251, 48.0475 is called "background". The background property can be set on classes, ids or directly on the HTML element.

```
.background, #background, body{  
background: rgb(192, 177, 177) }
```

If only the background color should be changed can be used:

```
.background{ background-color: rgb(192,  
177, 177) }
```

This example shows the color as background, it is applied via the CSS property "background".

To optimize and compress your CSS code, you can use our [online CSS compressor and optimizer](#) based on csstidy. If you want to create a linear or radial gradient as background or border, check our [CSS Gradient Generator](#).

Hey! You found this booklet interesting? Support Converting Colors with the new Membership Option!

The pro membership hides all ads, plus gives you double the colors in the color bucket, and more awesome pro features!

[Learn more, Memberships starting at \\$2.50/m!](#)

**Follow me
on Twitter!**

@ConvertingColor