

Converting Colors

XYZ(45.4807, 43.7064, 33.3595)

Have a look what the booklet for
XYZ(45.4807, 43.7064, 33.3595)
contains.

XYZ(45.4854, 43.6359, 33.2194)	3
<i>Conversions</i>	4
<i>Details</i>	6
<i>Harmonies</i>	12
<i>Previews</i>	24
<i>Color Blindness Simulation</i>	28
<i>CSS Examples</i>	31

Color

**XYZ(45.4854, 43.6359,
33.2194)**

Conversions

Conversions Part 1

Format	Color
Hex	D1A892
RGB	209, 168, 146
RGB Percent	82%, 66%, 57%
CMY	0.1804, 0.3412, 0.4274
CMYK	0.00, 0.20, 0.30, 0.18
HSL	21°, 41%, 70%
HSV	21°, 30%, 82%
XYZ	45.4854, 43.6359, 33.2194
YIQ	177.7510, 31.4980, 1.8500

Conversions

Conversions Part 2

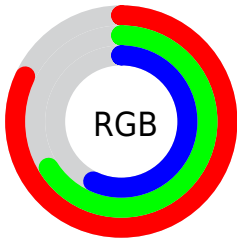
Format	Color
R _Y B	209, 180, 146
Decimal	13740178
CIE Lab	71.98, 11.85, 17.06
CIE LCh	72, 20.770, 55.210
Yxy	43.6359, 0.3718, 0.3567
Android (android.graphics.Color)	4291930258 (0xFFD1A892)
YUV	177.7510, -15.6532, 27.4054
Hunter-Lab	66.0575, 7.3097, 16.4241

Details

The XYZ color **45.4854, 43.6359, 33.2194** is a light color, and the websafe version is hex **CC9999**. A complement of this color would be **41.1324, 46.2536, 67.0815**, and the grayscale version is **42.2547, 44.4552, 48.4117**.

A 20% lighter version of the original color is **78.0530, 78.2055, 65.6249**, and **21.4478, 20.0893, 13.5737** is the 20% darker color. If you saturate the color by 10%, you get **41.6253, 38.2838, 24.6317**, and if you desaturate by 10%, it is **49.9077, 49.6362, 43.4618**.

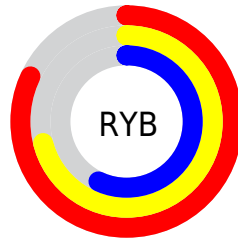
Distribution



Red (82%)

Green (66%)

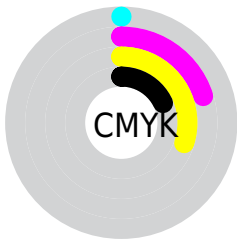
Blue (57%)



Red (82%)

Yellow (71%)

Blue (57%)

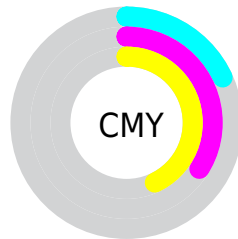


Cyan (0%)

Magenta (20%)

Yellow (30%)

Black (18%)



Cyan (18%)


Magenta (34%)


Yellow (43%)

Brightness & Saturation Gradients


These gradients show how the XYZ color 45.4854, 43.6359, 33.2194 changes by changing the brightness by 10 percent. The first figure shows a shift by +10% for each color and the second figure -10%.


Similar to the brightness gradients but the following saturation gradients show a change of the XYZ color 45.4854, 43.6359, 33.2194 by changing the saturation by 10% instead.


 45.4854, 43.6359,
33.2194

 45.4854, 43.6359,
33.2194


359.4866,
361.2204, 331.2995

 32.0428, 30.3844,
22.0221


 82.6809, 80.6696,
65.8379

 21.5499, 20.1305,
13.6747


 107.1646,
105.2205, 88.0961

 13.6413, 12.4900,
7.7586


136.0593,
134.3067, 114.8784

 7.9516, 7.0783,
3.8553

169.7305,
168.3126, 146.6033

 4.1156, 3.5111,
1.5463

208.5434,
207.6225, 183.6893

 1.7677, 1.4040,
0.2521

252.8636,

 0.4981, 0.2197,

252.6208, 226.5549

0.0000

303.0562,
303.6920, 275.6188

■ 0.0000, 0.0000,
0.0000

■ 45.4854, 43.6359,
33.2194

■ 45.4854, 43.6359,
33.2194

■ 41.6253, 38.2838,
24.6317

■ 49.9077, 49.6362,
43.4618

■ 38.2996, 33.5512,
17.6078

■ 54.9114, 56.3000,
55.4377

■ 35.4834, 29.4163,
12.0525

■ 60.5190, 63.6496,
69.2239

■ 33.1479, 25.8532,
7.8585

■ 66.7507, 71.7045,
84.8920

■ 31.2612, 22.8342,
4.9038

■ 73.6258, 80.4833,
102.5096

■ 29.7864, 20.3284,
3.0441

■ 78.4078, 88.9020,
107.6350

■ 28.6770, 18.3202,
2.0247

■ 80.1045, 92.2953,
108.2006

Harmonies

Analogous

The Analogous color harmony consists of three colors that are next to each other on the color wheel.



47.9504, 43.6359, 39.6749



45.4854, 43.6359, 33.2194



42.0462, 43.6359, 30.5973

Triad

The Triadic color harmony groups three colors that are evenly spaced from another and form a triangle on the color wheel.



45.4854, 43.6359, 33.2194



35.0479, 43.6359, 45.9011



44.4453, 43.6359, 67.4465

Complementary

The Complementary color scheme is a pair of colors which are on the opposite of each other on the color wheel.



45.4854, 43.6359, 33.2194



41.1324, 46.2536, 67.0815

Split Complementary

Split-complementary colors differ from the complementary color scheme. The scheme consists of three colors, the original color and two neighbors of the complement color.



40.9082, 43.6359, 69.7337



45.4854, 43.6359, 33.2194



35.6098, 43.6359, 56.3188

Square

The Square scheme is like the rectangle color scheme, but the four colors are evenly spaced on the color wheel.



45.4854, 43.6359, 33.2194



36.1263, 43.6359, 37.2243



37.7068, 43.6359, 65.4091



47.3264, 43.6359, 59.5396

Rectangle

The Rectangle color scheme consists of four colors that form a rectangle on the color wheel.



45.4854, 43.6359, 33.2194



39.7124, 43.6359, 31.0585



37.7068, 43.6359, 65.4091



43.2882, 43.6359, 68.9418

Sweetspot

The Sweet Spot groups the original color and five complimentary colors.



45.4865, 43.6379, 33.2203



86.9921, 89.4480, 89.0614



45.6508, 37.7444, 52.4566



18.3570, 18.7985, 18.4243



0.0000, 0.0000, 0.0000



20.3446, 21.4041, 23.3091

Same Dimension

The Same Dimension uses a secret algorithm to generate beautiful new colors.



45.4865, 43.6379, 33.2203



67.4430, 63.0600, 43.3615



51.7915, 56.2479, 35.3220



12.1416, 12.4740, 12.3798



17.7652, 11.4635, 1.2763



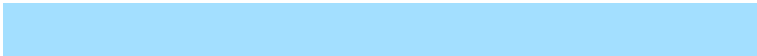
1.0669, 0.7882, 0.0959

Inverse Universe

The Inverse Universe completely reimagines the original color for something new.



41.1324, 46.2536, 67.0815



59.5659, 67.7690, 104.5490



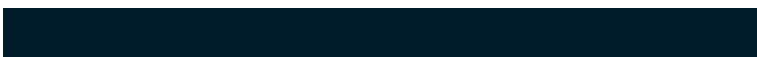
35.3357, 34.6601, 65.1493



11.7964, 12.6830, 15.0700



12.6198, 13.8862, 39.2077



0.7784, 0.9221, 2.2165

Previews

White Background



This preview shows how the XYZ color 45.4854, 43.6359, 33.2194 looks on a white background.

Color Contrast Check

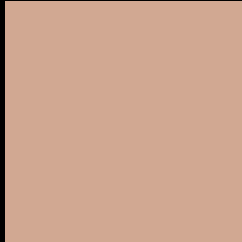
Large Text (above 18pt) WCAG AA × Fail

Any Text WCAG AA × Fail

Large Text (above 18pt) WCAG AAA × Fail

Any Text WCAG AAA × Fail

Black Background



This preview shows how the XYZ color 45.4854, 43.6359, 33.2194 looks on a black background.

Color Contrast Check

Large Text (above 18pt) WCAG AA ✓ Pass

Any Text WCAG AA ✓ Pass

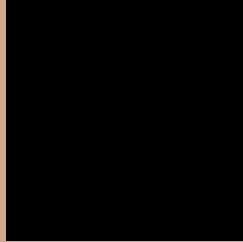
Large Text (above 18pt) WCAG AAA ✓ Pass

Any Text WCAG AAA ✓ Pass

If you want to check with other color combinations, try the [Color Contrast Checker](#).

XYZ 45.4854, 43.6359, 33.2194

Background



This preview shows how black text looks on a background with the XYZ color 45.4854, 43.6359, 33.2194.



This preview shows how white text looks on a background with the XYZ color 45.4854, 43.6359,

Color Blindness Simulation

Color vision deficiency is a very complex topic, and I could not describe the different causes any better than Wikipedia does, so if you want to learn more, you should check out their [article about color blindness](#).

Dichromacy



Original Color

45.4854, 43.6359, 33.2194

Protanopia

41.2801, 43.6918, 35.1118

Deuteranopia

44.7399, 43.8039, 33.2911



Tritanopia

48.2633, 43.6826, 46.9621

Trichromacy



Original Color

45.4854, 43.6359, 33.2194

Protanomaly

42.6165, 43.5264, 34.5891

Deuteranomaly

44.8299, 43.5731, 33.2418

Tritanomaly

47.1106, 43.4758, 41.5060

Monochromacy



Original Color

45.4854, 43.6359, 33.2194

Achromatopsia

42.3164, 44.5201, 48.4824

Achromatomaly

43.0053, 43.8441, 42.2725

CSS Examples

Text

The CSS property to change the color of the text to XYZ 45.4854, 43.6359, 33.2194 is called "color". The color property can be set on classes, ids or directly on the HTML element.

This example shows how text in the color `rgb(209, 168, 146)` looks like.

```
.text, #text, p{  
    color:rgb(209, 168, 146)  
}
```

If you want to add a text shadow in that color use the text-shadow property, you can generate a text shadow directly with our [CSS Text Shadow Generator](#).

Here you see how black text with a 4 pixel rgb(209, 168, 146) colored shadow looks like.

```
.shadow{ text-shadow: 4px 4px 2px rgb(209, 168, 146) }
```

Border

The CSS property to change the border of an element to XYZ 45.4854, 43.6359, 33.2194 is called "border". The border property can be set on classes, ids or directly on the HTML element.

This example shows the color as border, it can be applied via the CSS property "border" or "border-color".

```
.border, #border, table{ border:4px solid rgb(209, 168, 146) }
```


If only the border color should be changed use the property `border-color`.

```
.border{ border-color:rgb(209, 168, 146) }
```

If you want to add a box shadow in that color use:

Here you see how a box with a 4 pixel `rgb(209, 168, 146)` colored shadow looks like.

```
.boxshadow{ -moz-box-shadow:4px 4px 4px  
4px rgb(209, 168, 146); -webkit-box-  
shadow:4px 4px 4px 4px rgb(209, 168, 146);  
box-shadow:4px 4px 4px 4px rgb(209, 168,  
146) }
```

Background

The CSS property to change the background color of an element to XYZ 45.4854, 43.6359, 33.2194 is called "background". The background property can be set on classes, ids or directly on the HTML element.

```
.background, #background, body{  
background: rgb(209, 168, 146) }
```

If only the background color should be changed can be used:

```
.background{ background-color: rgb(209,  
168, 146) }
```

This example shows the color as background, it is applied via the CSS property "background".

To optimize and compress your CSS code, you can use our [online CSS compressor and optimizer](#) based on csstidy. If you want to create a linear or radial gradient as background or border, check our [CSS Gradient Generator](#).

Hey! You found this booklet interesting? Support Converting Colors with the new Membership Option!

The pro membership hides all ads, plus gives you double the colors in the color bucket, and more awesome pro features!

[Learn more, Memberships starting at \\$2.50/m!](#)

**Follow me
on Twitter!**

@ConvertingColor