

Converting Colors

XYZ(45.5554, 41.4991, 38.6893)

Have a look what the booklet for
XYZ(45.5554, 41.4991, 38.6893)
contains.

XYZ(45.4943, 41.3813, 38.8473)	3
<i>Conversions</i>	4
<i>Details</i>	6
<i>Harmonies</i>	12
<i>Previews</i>	24
<i>Color Blindness Simulation</i>	28
<i>CSS Examples</i>	31

Color

**XYZ(45.4943, 41.3813,
38.8473)**

Conversions

Conversions Part 1

Format	Color
Hex	D2A0A0
RGB	210, 160, 160
RGB Percent	82%, 63%, 63%
CMY	0.1765, 0.3725, 0.3725
CMYK	0.00, 0.24, 0.24, 0.18
HSL	0°, 36%, 73%
HSV	0°, 24%, 82%
XYZ	45.4943, 41.3813, 38.8473
YIQ	174.9500, 29.8000, 10.6000

Conversions

Conversions Part 2

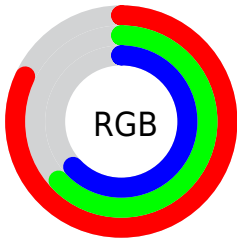
Format	Color
R _Y B	210, 160, 160
Decimal	13803680
CIE Lab	70.44, 18.52, 7.19
CIE LCh	70, 19.869, 21.209
Yxy	41.3813, 0.3619, 0.3291
Android (android.graphics.Color)	4291993760 (0xFFD2A0A0)
YUV	174.9500, -7.3703, 30.7389
Hunter-Lab	64.3283, 13.6644, 9.2251

Details

The XYZ color **45.4943, 41.3813, 38.8473** is a light color, and the websafe version is hex **CC9999**. A complement of this color would be **49.1761, 58.2183, 69.6184**, and the grayscale version is **40.7487, 42.8709, 46.6864**.

A 20% lighter version of the original color is **77.8062, 74.7672, 74.6207**, and **21.6404, 18.7978, 16.9558** is the 20% darker color. If you saturate the color by 10%, you get **40.4723, 34.0330, 28.8624**, and if you desaturate by 10%, it is **51.4437, 50.0871, 50.6731**.

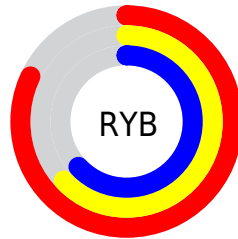
Distribution



Red (82%)

Green (63%)

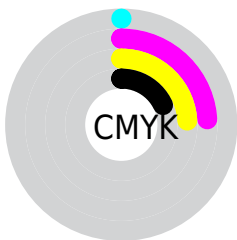
Blue (63%)



Red (82%)

Yellow (63%)

Blue (63%)

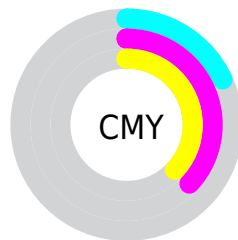


Cyan (0%)

Magenta (24%)

Yellow (24%)

Black (18%)



Cyan (18%)


Magenta (37%)


Yellow (37%)

Brightness & Saturation Gradients


These gradients show how the XYZ color 45.4943, 41.3813, 38.8473 changes by changing the brightness by 10 percent. The first figure shows a shift by +10% for each color and the second figure -10%.


Similar to the brightness gradients but the following saturation gradients show a change of the XYZ color 45.4943, 41.3813, 38.8473 by changing the saturation by 10% instead.


 45.4943, 41.3813,
38.8473

 45.4943, 41.3813,
38.8473


359.5219,
351.9117, 356.6474

 32.0499, 28.6171,
26.3340


 82.6942, 77.2624,
74.6228

 21.5553, 18.7914,
16.8457


 107.1803,
101.1481, 98.7220

 13.6453, 11.5196,
9.9637


136.0778,
129.5098, 127.5204

 7.9544, 6.4175,
5.2696

169.7519,
162.7319, 161.4364

 4.1174, 3.1006,
2.3448

208.5680,
201.1987, 200.8885

 1.7687, 1.1845,
0.7562

252.8915,

 0.4987, 0.0490,

245.2947, 246.2954

0.0000

303.0877,
295.4042, 298.0755

■ 0.0000, 0.0000,
0.0000

■ 45.4943, 41.3813,
38.8473

■ 45.4943, 41.3813,
38.8473

■ 40.4723, 34.0330,
28.8624

■ 51.4437, 50.0871,
50.6731

■ 36.3280, 27.9686,
20.6237

■ 58.3603, 60.2080,
64.4233

■ 33.0118, 23.1160,
14.0315

■ 66.2857, 71.8050,
80.1791

■ 30.4682, 19.3940,
8.9752

■ 75.2581, 84.9340,
98.0164

■ 28.6349, 16.7112,
5.3309

■ 80.3885, 92.4417,
108.2139

■ 27.4397, 14.9621,
2.9552

■ 26.7952, 14.0190,
1.6745

■ 26.5786, 13.7021,
1.2439

Harmonies

Analogous

The Analogous color harmony consists of three colors that are next to each other on the color wheel.



45.8836, 41.3813, 47.8680



45.4943, 41.3813, 38.8473



43.4069, 41.3813, 32.4202

Triad

The Triadic color harmony groups three colors that are evenly spaced from another and form a triangle on the color wheel.



45.4943, 41.3813, 38.8473



34.6283, 41.3813, 34.6841



38.3778, 41.3813, 65.3156

Complementary

The Complementary color scheme is a pair of colors which are on the opposite of each other on the color wheel.



45.4943, 41.3813, 38.8473



49.1761, 58.2183, 69.6184

Split Complementary

Split-complementary colors differ from the complementary color scheme. The scheme consists of three colors, the original color and two neighbors of the complement color.



35.5199, 41.3813, 60.6133



45.4943, 41.3813, 38.8473



33.4352, 41.3813, 42.3587

Square

The Square scheme is like the rectangle color scheme, but the four colors are evenly spaced on the color wheel.



45.4943, 41.3813, 38.8473



37.0990, 41.3813, 30.2586



33.7523, 41.3813, 51.8959



41.6522, 41.3813, 64.0320

Rectangle

The Rectangle color scheme consists of four colors that form a rectangle on the color wheel.



45.4943, 41.3813, 38.8473



41.3936, 41.3813, 30.0596



33.7523, 41.3813, 51.8959



37.3394, 41.3813, 64.3612

Sweetspot

The Sweet Spot groups the original color and five complimentary colors.



45.4954, 41.3832, 38.8481



86.8760, 88.0393, 92.6501



50.7824, 43.4969, 66.6922



18.4520, 18.6347, 19.5466



0.0000, 0.0000, 0.0000



20.3446, 21.4041, 23.3091

Same Dimension

The Same Dimension uses a secret algorithm to generate beautiful new colors.



45.4954, 41.3832, 38.8481



66.1209, 57.6687, 51.3892



50.2728, 50.9381, 40.4406



11.8089, 11.8084, 12.2689



16.2125, 8.3581, 0.7588



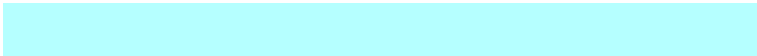
0.9065, 0.4674, 0.0424

Inverse Universe

The Inverse Universe completely reimagines the original color for something new.



49.1761, 58.2183, 69.6184



72.8759, 88.5660, 107.8617



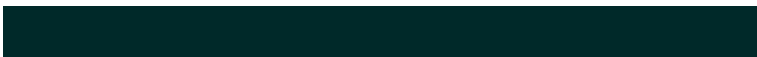
43.4795, 46.8251, 67.7196



12.1583, 13.4070, 15.1906



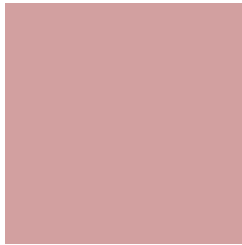
21.1515, 30.9495, 42.0516



1.1827, 1.7306, 2.3513

Previews

White Background



This preview shows how the XYZ color 45.4943, 41.3813, 38.8473 looks on a white background.

Color Contrast Check

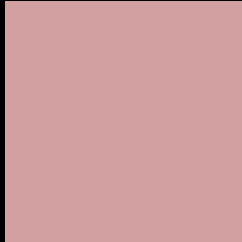
Large Text (above 18pt) WCAG AA × Fail

Any Text WCAG AA × Fail

Large Text (above 18pt) WCAG AAA × Fail

Any Text WCAG AAA × Fail

Black Background



This preview shows how the XYZ color 45.4943, 41.3813, 38.8473 looks on a black background.

Color Contrast Check

Large Text (above 18pt) WCAG AA ✓ Pass

Any Text WCAG AA ✓ Pass

Large Text (above 18pt) WCAG AAA ✓ Pass

Any Text WCAG AAA ✓ Pass

If you want to check with other color combinations, try the [Color Contrast Checker](#).

XYZ 45.4943, 41.3813, 38.8473

Background



This preview shows how black text looks on a background with the XYZ color 45.4943, 41.3813, 38.8473.



This preview shows how white text looks on a background with the XYZ color 45.4943, 41.3813,

Color Blindness Simulation

Color vision deficiency is a very complex topic, and I could not describe the different causes any better than Wikipedia does, so if you want to learn more, you should check out their [article about color blindness](#).

Dichromacy



Original Color

45.4943, 41.3813, 38.8473

Protanopia

39.7669, 41.6053, 42.0111

Deuteranopia

42.1424, 41.2450, 38.5408



Tritanopia

46.4415, 41.2429, 44.0410

Trichromacy



Original Color

45.4943, 41.3813, 38.8473

Protanomaly

41.6897, 41.5044, 40.9358

Deuteranomaly

43.3529, 41.3335, 38.4941

Tritanomaly

46.2372, 41.4352, 42.1200

Monochromacy



Original Color

45.4943, 41.3813, 38.8473

Achromatopsia

40.7470, 42.8690, 46.6844

Achromatomaly

42.3695, 42.3431, 43.9701

CSS Examples

Text

The CSS property to change the color of the text to XYZ 45.4943, 41.3813, 38.8473 is called "color". The color property can be set on classes, ids or directly on the HTML element.

This example shows how text in the color `rgb(210, 160, 160)` looks like.

```
.text, #text, p{  
    color:rgb(210, 160, 160)  
}
```

If you want to add a text shadow in that color use the text-shadow property, you can generate a text shadow directly with our [CSS Text Shadow Generator](#).

Here you see how black text with a 4 pixel rgb(210, 160, 160) colored shadow looks like.

```
.shadow{ text-shadow: 4px 4px 2px rgb(210, 160, 160) }
```

Border

The CSS property to change the border of an element to XYZ 45.4943, 41.3813, 38.8473 is called "border". The border property can be set on classes, ids or directly on the HTML element.

This example shows the color as border, it can be applied via the CSS property "border" or "border-color".

```
.border, #border, table{ border:4px solid rgb(210, 160, 160) }
```


If only the border color should be changed use the property `border-color`.

```
.border{ border-color:rgb(210, 160, 160) }
```

If you want to add a box shadow in that color use:

Here you see how a box with a 4 pixel `rgb(210, 160, 160)` colored shadow looks like.

```
.boxshadow{ -moz-box-shadow:4px 4px 4px  
4px rgb(210, 160, 160); -webkit-box-  
shadow:4px 4px 4px 4px rgb(210, 160, 160);  
box-shadow:4px 4px 4px 4px rgb(210, 160,  
160) }
```

Background

The CSS property to change the background color of an element to XYZ 45.4943, 41.3813, 38.8473 is called "background". The background property can be set on classes, ids or directly on the HTML element.

```
.background, #background, body{  
background: rgb(210, 160, 160) }
```

If only the background color should be changed can be used:

```
.background{ background-color: rgb(210,  
160, 160) }
```

This example shows the color as background, it is applied via the CSS property "background".

To optimize and compress your CSS code, you can use our [online CSS compressor and optimizer](#) based on csstidy. If you want to create a linear or radial gradient as background or border, check our [CSS Gradient Generator](#).

Hey! You found this booklet interesting? Support Converting Colors with the new Membership Option!

The pro membership hides all ads, plus gives you double the colors in the color bucket, and more awesome pro features!

[Learn more, Memberships starting at \\$2.50/m!](#)

**Follow me
on Twitter!**

@ConvertingColor