

Converting Colors

XYZ(45.6500, 44.6572, 46.0202)

Have a look what the booklet for
XYZ(45.6500, 44.6572, 46.0202)
contains.

XYZ(45.6812, 44.5668, 46.2390)	3
<i>Conversions</i>	4
<i>Details</i>	6
<i>Harmonies</i>	12
<i>Previews</i>	24
<i>Color Blindness Simulation</i>	28
<i>CSS Examples</i>	31

Color

**XYZ(45.6812, 44.5668,
46.2390)**

Conversions

Conversions Part 1

Format	Color
Hex	C6ACAE
RGB	198, 172, 174
RGB Percent	78%, 67%, 68%
CMY	0.2235, 0.3255, 0.3176
CMYK	0.00, 0.13, 0.12, 0.22
HSL	355°, 19%, 73%
HSV	355°, 13%, 78%
XYZ	45.6812, 44.5668, 46.2390
YIQ	180.0020, 14.8540, 6.1340

Conversions

Conversions Part 2

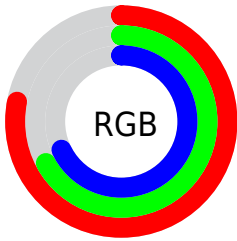
Format	Color
R _Y B	198, 172, 174
Decimal	13020334
CIE Lab	72.61, 9.73, 2.44
CIE LCh	73, 10.034, 14.064
Yxy	44.5668, 0.3347, 0.3265
Android (android.graphics.Color)	4291210414 (0xFFC6ACAE)
YUV	180.0020, -2.9590, 15.7842
Hunter-Lab	66.7584, 5.3163, 5.6647

Details

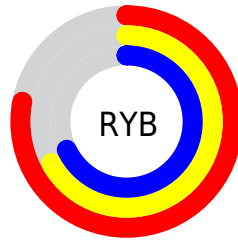
The XYZ color **45.6812, 44.5668, 46.2390** is a light color, and the websafe version is hex **CC9999**. A complement of this color would be **47.1729, 53.1454, 59.9989**, and the grayscale version is **43.3943, 45.6542, 49.7174**.

A 20% lighter version of the original color is **82.8519, 81.8553, 85.5616**, and **21.7309, 20.7674, 21.2755** is the 20% darker color. If you saturate the color by 10%, you get **40.5276, 36.9197, 36.3193**, and if you desaturate by 10%, it is **51.6413, 53.4377, 57.6251**.

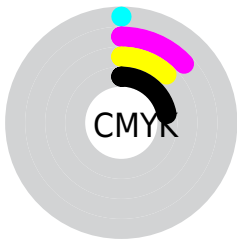
Distribution



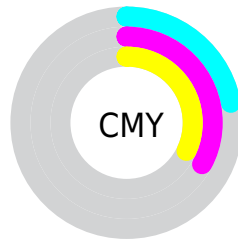
- Red (78%)
- Green (67%)
- Blue (68%)



- Red (78%)
- Yellow (67%)
- Blue (68%)



- Cyan (0%)
- Magenta (13%)
- Yellow (12%)
- Black (22%)





- Cyan (22%)
- Magenta (33%)
- Yellow (32%)

Brightness & Saturation Gradients


These gradients show how the XYZ color 45.6812, 44.5668, 46.2390 changes by changing the brightness by 10 percent. The first figure shows a shift by +10% for each color and the second figure -10%.


Similar to the brightness gradients but the following saturation gradients show a change of the XYZ color 45.6812, 44.5668, 46.2390 by changing the saturation by 10% instead.


 45.6812, 44.5668,
46.2390

 45.6812, 44.5668,
46.2390


360.2629,
365.0162, 388.0741

 32.1979, 31.1163,
32.0844


 82.9725, 82.0700,
85.9146

 21.6690, 20.6875,
21.1606


107.5111,
106.8915, 112.2727

 13.7291, 12.8957,
13.0491


136.4656,
136.2721, 143.5358

 8.0129, 7.3568,
7.3312

170.2013,
170.5963, 180.1224

 4.1551, 3.6862,
3.5885

209.0835,
210.2484, 222.4509

 1.7903, 1.4996,
1.4024

253.4776,

 0.5118, 0.2885,

255.6128, 270.9401

0.1436

303.7490,
307.0740, 326.0083

■ 0.0000, 0.0000,
0.0000

■ 45.6812, 44.5668,
46.2390

■ 45.6812, 44.5668,
46.2390

■ 40.5276, 36.9197,
36.3193

■ 51.6413, 53.4377,
57.6251

■ 36.1423, 30.4372,
27.8037

■ 58.4365, 63.5767,
70.5309

■ 32.4896, 25.0639,
20.6295

■ 66.0988, 75.0329,
85.0104

■ 29.5294, 20.7376,
14.7284

■ 74.6571, 87.8512,
101.1142

■ 27.2178, 17.3900,
10.0257

■ 77.0989, 90.7459,
108.0599

■ 25.5060, 14.9446,
6.4393

■ 24.3381, 13.3138,
3.8765

■ 23.6475, 12.3921,
2.2295

■ 23.3766, 12.0410,
1.5517

Harmonies

Analogous

The Analogous color harmony consists of three colors that are next to each other on the color wheel.



45.6515, 44.5668, 51.1985



45.6812, 44.5668, 46.2390



44.8040, 44.5668, 42.1750

Triad

The Triadic color harmony groups three colors that are evenly spaced from another and form a triangle on the color wheel.



45.6812, 44.5668, 46.2390



40.0797, 44.5668, 41.9742



41.4493, 44.5668, 58.3127

Complementary

The Complementary color scheme is a pair of colors which are on the opposite of each other on the color wheel.



45.6812, 44.5668, 46.2390



47.1729, 53.1454, 59.9989

Split Complementary

Split-complementary colors differ from the complementary color scheme. The scheme consists of three colors, the original color and two neighbors of the complement color.



40.0054, 44.5668, 55.4838



45.6812, 44.5668, 46.2390



39.2295, 44.5668, 45.9475

Square

The Square scheme is like the rectangle color scheme, but the four colors are evenly spaced on the color wheel.



45.6812, 44.5668, 46.2390



41.5533, 44.5668, 39.8291



39.2027, 44.5668, 50.8865



43.1759, 44.5668, 58.4041

Rectangle

The Rectangle color scheme consists of four colors that form a rectangle on the color wheel.



45.6812, 44.5668, 46.2390



43.8364, 44.5668, 40.4249



39.2027, 44.5668, 50.8865



40.9159, 44.5668, 57.6422

Sweetspot

The Sweet Spot groups the original color and five complimentary colors.



45.6824, 44.5688, 46.2399



90.4026, 93.0721, 100.0538



47.6685, 45.2977, 59.6575



19.1686, 19.6513, 21.0702



0.0000, 0.0000, 0.0000



20.3446, 21.4041, 23.3091

Same Dimension

The Same Dimension uses a secret algorithm to generate beautiful new colors.



45.6824, 44.5688, 46.2399



77.9050, 74.4816, 76.1436



47.6355, 48.7842, 45.9378



10.6664, 10.6499, 11.2264



15.2149, 7.8355, 1.0757



0.7321, 0.3757, 0.1127

Inverse Universe

The Inverse Universe completely reimagines the original color for something new.



45.6824, 44.5688, 46.2399



77.9050, 74.4816, 76.1436



45.0137, 48.4609, 60.4080



10.6664, 10.6499, 11.2264



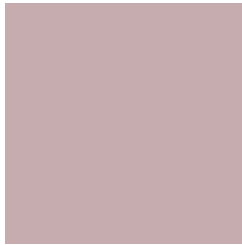
15.2149, 7.8355, 1.0757



0.7321, 0.3757, 0.1127

Previews

White Background



This preview shows how the XYZ color 45.6812, 44.5668, 46.2390 looks on a white background.

Color Contrast Check

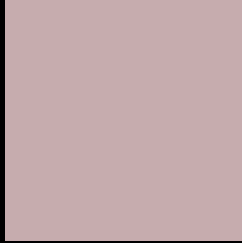
Large Text (above 18pt) WCAG AA × Fail

Any Text WCAG AA × Fail

Large Text (above 18pt) WCAG AAA × Fail

Any Text WCAG AAA × Fail

Black Background



This preview shows how the XYZ color 45.6812, 44.5668, 46.2390 looks on a black background.

Color Contrast Check

Large Text (above 18pt) WCAG AA ✓ Pass

Any Text WCAG AA ✓ Pass

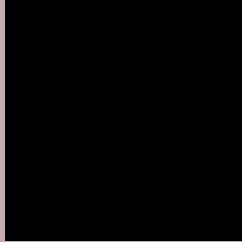
Large Text (above 18pt) WCAG AAA ✓ Pass

Any Text WCAG AAA ✓ Pass

If you want to check with other color combinations, try the [Color Contrast Checker](#).

XYZ 45.6812, 44.5668, 46.2390

Background



This preview shows how black text looks on a background with the XYZ color 45.6812, 44.5668, 46.2390.



This preview shows how white text looks on a background with the XYZ color 45.6812, 44.5668,

Color Blindness Simulation

Color vision deficiency is a very complex topic, and I could not describe the different causes any better than Wikipedia does, so if you want to learn more, you should check out their [article about color blindness](#).

Dichromacy



Original Color

45.6812, 44.5668, 46.2390

Protanopia

42.9494, 44.5637, 47.9330

Deuteranopia

45.4185, 44.4314, 46.2267



Tritanopia

46.5796, 44.3523, 51.4532

Trichromacy



Original Color

45.6812, 44.5668, 46.2390

Protanomaly

43.9055, 44.4859, 47.3469

Deuteranomaly

45.4185, 44.4314, 46.2267

Tritanomaly

46.3543, 44.5632, 49.3384

Monochromacy



Original Color

45.6812, 44.5668, 46.2390

Achromatopsia

43.3819, 45.6411, 49.7032

Achromatomaly

44.2515, 45.2234, 48.5162

CSS Examples

Text

The CSS property to change the color of the text to XYZ 45.6812, 44.5668, 46.2390 is called "color". The color property can be set on classes, ids or directly on the HTML element.

This example shows how text in the color `rgb(198, 172, 174)` looks like.

```
.text, #text, p{  
    color:rgb(198, 172, 174)  
}
```

If you want to add a text shadow in that color use the text-shadow property, you can generate a text shadow directly with our [CSS Text Shadow Generator](#).

Here you see how black text with a 4 pixel rgb(198, 172, 174) colored shadow looks like.

```
.shadow{ text-shadow: 4px 4px 2px rgb(198, 172, 174) }
```

Border

The CSS property to change the border of an element to XYZ 45.6812, 44.5668, 46.2390 is called "border". The border property can be set on classes, ids or directly on the HTML element.

This example shows the color as border, it can be applied via the CSS property "border" or "border-color".

```
.border, #border, table{ border:4px solid rgb(198, 172, 174) }
```


If only the border color should be changed use the property border-color.

```
.border{ border-color:rgb(198, 172, 174) }
```

If you want to add a box shadow in that color use:

Here you see how a box with a 4 pixel rgb(198, 172, 174) colored shadow looks like.

```
.boxshadow{ -moz-box-shadow:4px 4px 4px  
4px rgb(198, 172, 174); -webkit-box-  
shadow:4px 4px 4px 4px rgb(198, 172, 174);  
box-shadow:4px 4px 4px 4px rgb(198, 172,  
174) }
```

Background

The CSS property to change the background color of an element to XYZ 45.6812, 44.5668, 46.2390 is called "background". The background property can be set on classes, ids or directly on the HTML element.

```
.background, #background, body{  
background: rgb(198, 172, 174) }
```

If only the background color should be changed can be used:

```
.background{ background-color: rgb(198,  
172, 174) }
```

This example shows the color as background, it is applied via the CSS property "background".

To optimize and compress your CSS code, you can use our [online CSS compressor and optimizer](#) based on csstidy. If you want to create a linear or radial gradient as background or border, check our [CSS Gradient Generator](#).

Hey! You found this booklet interesting? Support Converting Colors with the new Membership Option!

The pro membership hides all ads, plus gives you double the colors in the color bucket, and more awesome pro features!

[Learn more, Memberships starting at \\$2.50/m!](#)

**Follow me
on Twitter!**

@ConvertingColor