

Converting Colors

XYZ(45.6540, 43.3043, 44.7584)

Have a look what the booklet for
XYZ(45.6540, 43.3043, 44.7584)
contains.

XYZ(45.6222, 43.1725, 44.9583)	3
<i>Conversions</i>	4
<i>Details</i>	6
<i>Harmonies</i>	12
<i>Previews</i>	24
<i>Color Blindness Simulation</i>	28
<i>CSS Examples</i>	31

Color

**XYZ(45.6222, 43.1725,
44.9583)**

Conversions

Conversions Part 1

Format	Color
Hex	CAA7AC
RGB	202, 167, 172
RGB Percent	79%, 65%, 67%
CMY	0.2078, 0.3451, 0.3255
CMYK	0.00, 0.17, 0.15, 0.21
HSL	351°, 25%, 72%
HSV	351°, 17%, 79%
XYZ	45.6222, 43.1725, 44.9583
YIQ	178.0350, 19.2550, 8.9750

Conversions

Conversions Part 2

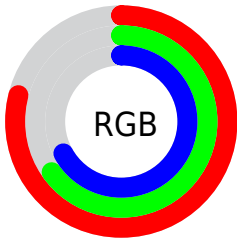
Format	Color
R _Y B	202, 167, 172
Decimal	13281196
CIE Lab	71.67, 13.59, 2.23
CIE LCh	72, 13.771, 9.316
Yxy	43.1725, 0.3411, 0.3228
Android (android.graphics.Color)	4291471276 (0xFFCAA7AC)
YUV	178.0350, -2.9753, 21.0173
Hunter-Lab	65.7058, 8.9547, 5.4257

Details

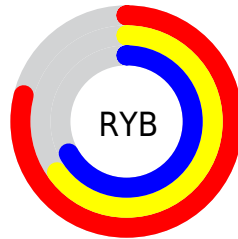
The XYZ color **45.6222, 43.1725, 44.9583** is a light color, and the websafe version is hex **CC9999**. A complement of this color would be **47.1366, 54.4888, 60.8589**, and the grayscale version is **42.3445, 44.5497, 48.5146**.

A 20% lighter version of the original color is **81.2264, 79.0486, 83.6499**, and **21.7336, 19.9134, 20.4675** is the 20% darker color. If you saturate the color by 10%, you get **40.6507, 35.7194, 35.6239**, and if you desaturate by 10%, it is **51.3909, 51.8722, 55.6286**.

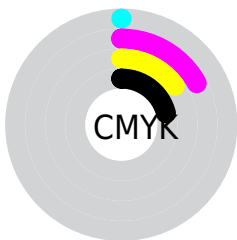
Distribution



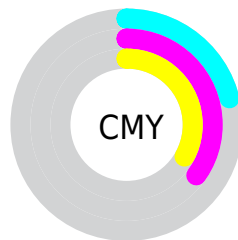
- Red (79%)
- Green (65%)
- Blue (67%)



- Red (79%)
- Yellow (65%)
- Blue (67%)



- Cyan (0%)
- Magenta (17%)
- Yellow (15%)
- Black (21%)





- Cyan (21%)
- Magenta (35%)
- Yellow (33%)

Brightness & Saturation Gradients


These gradients show how the XYZ color 45.6222, 43.1725, 44.9583 changes by changing the brightness by 10 percent. The first figure shows a shift by +10% for each color and the second figure -10%.


Similar to the brightness gradients but the following saturation gradients show a change of the XYZ color 45.6222, 43.1725, 44.9583 by changing the saturation by 10% instead.


 45.6222, 43.1725,
44.9583


 45.6222, 43.1725,
44.9583


360.0291,
359.3207, 382.7598

 32.1512, 30.0205,
31.0819


 82.8846, 79.9711,
83.9756

 21.6331, 19.8541,
20.4022


 107.4067,
104.3865, 109.9536

 13.7026, 12.2891,
12.5008


136.3432,
133.3251, 140.8025

 7.9945, 6.9409,
6.9590

170.0595,
167.1714, 176.9409

 4.1432, 3.4251,
3.3584

208.9208,
206.3097, 218.7872

 1.7834, 1.3575,
1.2804

253.2927,

 0.5077, 0.1851,

251.1244, 266.7602

0.0457

303.5403,
301.9999, 321.2782

■ 0.0000, 0.0000,
0.0000

■ 45.6222, 43.1725,
44.9583

■ 45.6222, 43.1725,
44.9583

■ 40.6507, 35.7194,
35.6239

■ 51.3909, 51.8722,
55.6286

■ 36.4376, 29.4502,
27.5699

■ 57.9861, 61.8658,
67.6818

■ 32.9465, 24.3057,
20.7411

■ 65.4398, 73.2054,
81.1661

■ 30.1364, 20.2189,
15.0771

■ 73.7817, 85.9384,
96.1262

■ 27.9622, 17.1162,
10.5122

■ 78.1673, 91.2967,
108.1099

■ 26.3733, 14.9140,
6.9743

■ 25.3109, 13.5152,
4.3822

■ 24.6971, 12.7864,
2.6401

■ 24.5771, 12.6446,
2.2973

Harmonies

Analogous

The Analogous color harmony consists of three colors that are next to each other on the color wheel.



45.3758, 43.1725, 51.6932



45.6222, 43.1725, 44.9583



44.6037, 43.1725, 39.3281

Triad

The Triadic color harmony groups three colors that are evenly spaced from another and form a triangle on the color wheel.



45.6222, 43.1725, 44.9583



38.2569, 43.1725, 37.7517



39.4699, 43.1725, 60.0808

Complementary

The Complementary color scheme is a pair of colors which are on the opposite of each other on the color wheel.



45.6222, 43.1725, 44.9583



47.1366, 54.4888, 60.8589

Split Complementary

Split-complementary colors differ from the complementary color scheme. The scheme consists of three colors, the original color and two neighbors of the complement color.



37.6604, 43.1725, 55.6267



45.6222, 43.1725, 44.9583



36.9787, 43.1725, 42.6139

Square

The Square scheme is like the rectangle color scheme, but the four colors are evenly spaced on the color wheel.



45.6222, 43.1725, 44.9583



40.3123, 43.1725, 35.4348



36.7645, 43.1725, 49.1181



41.7646, 43.1725, 60.8599

Rectangle

The Rectangle color scheme consists of four colors that form a rectangle on the color wheel.



45.6222, 43.1725, 44.9583



43.3663, 43.1725, 36.8016



36.7645, 43.1725, 49.1181



38.7872, 43.1725, 58.9448

Sweetspot

The Sweet Spot groups the original color and five complimentary colors.



45.6234, 43.1744, 44.9592



89.4064, 91.4491, 98.5832



47.4412, 43.7403, 61.8198



18.9731, 19.3265, 20.8010



0.0000, 0.0000, 0.0000



20.3446, 21.4041, 23.3091

Same Dimension

The Same Dimension uses a secret algorithm to generate beautiful new colors.



45.6234, 43.1744, 44.9592



73.7521, 67.8516, 69.5930



47.5037, 47.6887, 43.2627



11.2765, 11.2393, 11.9906



15.8349, 8.1446, 1.5834



0.8385, 0.4288, 0.1954

Inverse Universe

The Inverse Universe completely reimagines the original color for something new.



45.6234, 43.1744, 44.9592



73.7521, 67.8516, 69.5930



44.9579, 49.1999, 63.0045



11.2765, 11.2393, 11.9906



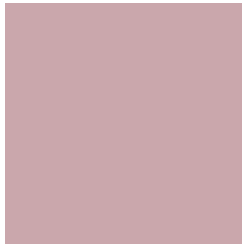
15.8349, 8.1446, 1.5834



0.8385, 0.4288, 0.1954

Previews

White Background



This preview shows how the XYZ color 45.6222, 43.1725, 44.9583 looks on a white background.

Color Contrast Check

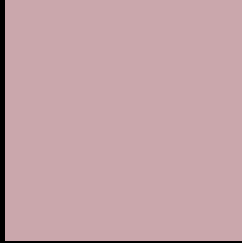
Large Text (above 18pt) WCAG AA × Fail

Any Text WCAG AA × Fail

Large Text (above 18pt) WCAG AAA × Fail

Any Text WCAG AAA × Fail

Black Background



This preview shows how the XYZ color 45.6222, 43.1725, 44.9583 looks on a black background.

Color Contrast Check

Large Text (above 18pt) WCAG AA ✓ Pass

Any Text WCAG AA ✓ Pass

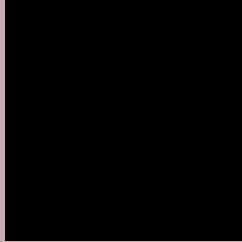
Large Text (above 18pt) WCAG AAA ✓ Pass

Any Text WCAG AAA ✓ Pass

If you want to check with other color combinations, try the [Color Contrast Checker](#).

XYZ 45.6222, 43.1725, 44.9583

Background



This preview shows how black text looks on a background with the XYZ color 45.6222, 43.1725, 44.9583.



This preview shows how white text looks on a background with the XYZ color 45.6222, 43.1725,

Color Blindness Simulation

Color vision deficiency is a very complex topic, and I could not describe the different causes any better than Wikipedia does, so if you want to learn more, you should check out their [article about color blindness](#).

Dichromacy



Original Color

45.6222, 43.1725, 44.9583

Protanopia

41.8562, 43.4180, 47.7694

Deuteranopia

43.9735, 43.1591, 44.5410



Tritanopia

46.4015, 43.2236, 48.5452

Trichromacy



Original Color

45.6222, 43.1725, 44.9583

Protanomaly

42.9839, 43.1650, 46.6236

Deuteranomaly

44.5646, 43.1865, 44.5151

Tritanomaly

46.1013, 43.1035, 46.9643

Monochromacy



Original Color

45.6222, 43.1725, 44.9583

Achromatopsia

42.3164, 44.5201, 48.4824

Achromatomaly

43.4660, 43.9715, 47.2707

CSS Examples

Text

The CSS property to change the color of the text to XYZ 45.6222, 43.1725, 44.9583 is called "color". The color property can be set on classes, ids or directly on the HTML element.

This example shows how text in the color `rgb(202, 167, 172)` looks like.

```
.text, #text, p{  
    color:rgb(202, 167, 172)  
}
```

If you want to add a text shadow in that color use the text-shadow property, you can generate a text shadow directly with our [CSS Text Shadow Generator](#).

Here you see how black text with a 4 pixel rgb(202, 167, 172) colored shadow looks like.

```
.shadow{ text-shadow: 4px 4px 2px rgb(202, 167, 172) }
```

Border

The CSS property to change the border of an element to XYZ 45.6222, 43.1725, 44.9583 is called "border". The border property can be set on classes, ids or directly on the HTML element.

This example shows the color as border, it can be applied via the CSS property "border" or "border-color".

```
.border, #border, table{ border:4px solid rgb(202, 167, 172) }
```


If only the border color should be changed use the property `border-color`.

```
.border{ border-color:rgb(202, 167, 172) }
```

If you want to add a box shadow in that color use:

Here you see how a box with a 4 pixel `rgb(202, 167, 172)` colored shadow looks like.

```
.boxshadow{ -moz-box-shadow:4px 4px 4px  
4px rgb(202, 167, 172); -webkit-box-  
shadow:4px 4px 4px 4px rgb(202, 167, 172);  
box-shadow:4px 4px 4px 4px rgb(202, 167,  
172) }
```

Background

The CSS property to change the background color of an element to XYZ 45.6222, 43.1725, 44.9583 is called "background". The background property can be set on classes, ids or directly on the HTML element.

```
.background, #background, body{  
background: rgb(202, 167, 172) }
```

If only the background color should be changed can be used:

```
.background{ background-color: rgb(202,  
167, 172) }
```

This example shows the color as background, it is applied via the CSS property "background".

To optimize and compress your CSS code, you can use our [online CSS compressor and optimizer](#) based on csstidy. If you want to create a linear or radial gradient as background or border, check our [CSS Gradient Generator](#).

Hey! You found this booklet interesting? Support Converting Colors with the new Membership Option!

The pro membership hides all ads, plus gives you double the colors in the color bucket, and more awesome pro features!

[Learn more, Memberships starting at \\$2.50/m!](#)

**Follow me
on Twitter!**

@ConvertingColor