

Converting Colors

XYZ(45.7090, 43.1748, 40.2951)

Have a look what the booklet for
XYZ(45.7090, 43.1748, 40.2951)
contains.

XYZ(45.6114, 43.0029, 40.0788)	3
<i>Conversions</i>	4
<i>Details</i>	6
<i>Harmonies</i>	12
<i>Previews</i>	24
<i>Color Blindness Simulation</i>	28
<i>CSS Examples</i>	31

Color

**XYZ(45.6114, 43.0029,
40.0788)**

Conversions

Conversions Part 1

Format	Color
Hex	CEA6A2
RGB	206, 166, 162
RGB Percent	81%, 65%, 64%
CMY	0.1922, 0.3490, 0.3647
CMYK	0.00, 0.19, 0.21, 0.19
HSL	5°, 31%, 72%
HSV	5°, 21%, 81%
XYZ	45.6114, 43.0029, 40.0788
YIQ	177.5040, 25.1240, 7.2360

Conversions

Conversions Part 2

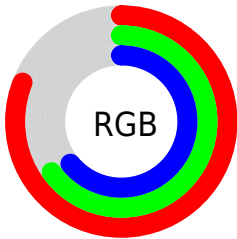
Format	Color
R _Y B	206, 166, 162
Decimal	13543074
CIE Lab	71.56, 14.05, 7.63
CIE LCh	72, 15.990, 28.487
Yxy	43.0029, 0.3544, 0.3342
Android (android.graphics.Color)	4291733154 (0xFFCEA6A2)
YUV	177.5040, -7.6435, 24.9910
Hunter-Lab	65.5766, 9.3955, 9.6670

Details

The XYZ color **45.6114, 43.0029, 40.0788** is a light color, and the websafe version is hex **CC9999**. A complement of this color would be **47.1609, 54.3772, 66.4030**, and the grayscale version is **42.0858, 44.2775, 48.2182**.

A 20% lighter version of the original color is **79.6208, 77.9827, 76.5013**, and **21.5943, 19.7397, 17.4239** is the 20% darker color. If you saturate the color by 10%, you get **40.7686, 36.0115, 30.1582**, and if you desaturate by 10%, it is **51.2522, 51.1095, 51.7463**.

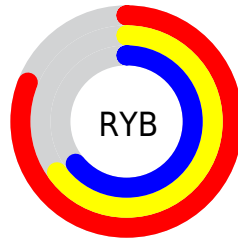
Distribution



Red (81%)

Green (65%)

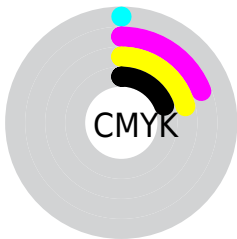
Blue (64%)



Red (81%)

Yellow (65%)

Blue (64%)

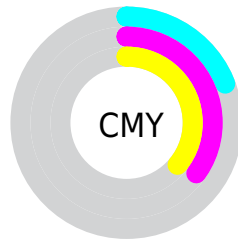


Cyan (0%)

Magenta (19%)

Yellow (21%)

Black (19%)



Cyan (19%)


Magenta (35%)


Yellow (36%)

Brightness & Saturation Gradients


These gradients show how the XYZ color 45.6114, 43.0029, 40.0788 changes by changing the brightness by 10 percent. The first figure shows a shift by +10% for each color and the second figure -10%.


Similar to the brightness gradients but the following saturation gradients show a change of the XYZ color 45.6114, 43.0029, 40.0788 by changing the saturation by 10% instead.


 45.6114, 43.0029,
40.0788


 45.6114, 43.0029,
40.0788


359.9863,
358.6237, 362.0176

 32.1426, 29.8874,
27.2857


 82.8686, 79.7152,
76.5219

 21.6265, 19.7531,
17.5536


 107.3876,
104.0809, 101.0090

 13.6978, 12.2157,
10.4639


136.3208,
132.9653, 130.2312

 7.9911, 6.8908,
5.5980

170.0335,
166.7530, 164.6070

 4.1410, 3.3939,
2.5374

208.8911,
205.8282, 204.5551

 1.7822, 1.3407,
0.8599

253.2588,

 0.5069, 0.1724,

250.5755, 250.4938

0.0000

303.5021,
301.3792, 302.8418

■ 0.0000, 0.0000,
0.0000

■ 45.6114, 43.0029,
40.0788

■ 45.6114, 43.0029,
40.0788

■ 40.7686, 36.0115,
30.1582

■ 51.2522, 51.1095,
51.7463

■ 36.6844, 30.0808,
21.8980

■ 57.7210, 60.3708,
65.2363

■ 33.3212, 25.1609,
15.2080

■ 65.0508, 70.8319,
80.6232

■ 30.6369, 21.1951,
9.9887

■ 73.2716, 82.5334,
97.9765

■ 28.5850, 18.1214,
6.1290

■ 79.2637, 91.8619,
108.1612

■ 27.1131, 15.8705,
3.5021

■ 26.1602, 14.3627,
1.9572

■ 25.6823, 13.5791,
1.2674

Harmonies

Analogous

The Analogous color harmony consists of three colors that are next to each other on the color wheel.



46.2895, 43.0029, 47.2169



45.6114, 43.0029, 40.0788



43.6491, 43.0029, 35.2493

Triad

The Triadic color harmony groups three colors that are evenly spaced from another and form a triangle on the color wheel.



45.6114, 43.0029, 40.0788



36.6020, 43.0029, 39.4683



40.7359, 43.0029, 63.3270

Complementary

The Complementary color scheme is a pair of colors which are on the opposite of each other on the color wheel.



45.6114, 43.0029, 40.0788



47.1609, 54.3772, 66.4030

Split Complementary

Split-complementary colors differ from the complementary color scheme. The scheme consists of three colors, the original color and two neighbors of the complement color.



38.2171, 43.0029, 60.6873



45.6114, 43.0029, 40.0788



35.8964, 43.0029, 46.4310

Square

The Square scheme is like the rectangle color scheme, but the four colors are evenly spaced on the color wheel.



45.6114, 43.0029, 40.0788



38.4448, 43.0029, 34.9251



36.4746, 43.0029, 54.2839



43.4013, 43.0029, 61.1556

Rectangle

The Rectangle color scheme consists of four colors that form a rectangle on the color wheel.



45.6114, 43.0029, 40.0788



41.9187, 43.0029, 33.7042



36.4746, 43.0029, 54.2839



39.8447, 43.0029, 62.9679

Sweetspot

The Sweet Spot groups the original color and five complimentary colors.



45.6126, 43.0049, 40.0797



88.4063, 90.4987, 95.0131



49.0745, 43.2430, 61.8448



18.7744, 19.1582, 20.0276



0.0000, 0.0000, 0.0000



20.3446, 21.4041, 23.3091

Same Dimension

The Same Dimension uses a secret algorithm to generate beautiful new colors.



45.6126, 43.0049, 40.0797



69.8482, 63.8319, 56.6130



49.8877, 51.5551, 41.5047



11.2931, 11.3751, 11.6798



15.8455, 8.4240, 0.7908



0.8464, 0.4924, 0.0504

Inverse Universe

The Inverse Universe completely reimagines the original color for something new.



47.1609, 54.3772, 66.4030



72.8273, 85.7312, 107.3171



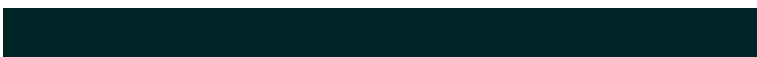
42.4300, 44.9154, 64.8260



11.4526, 12.5456, 14.3883



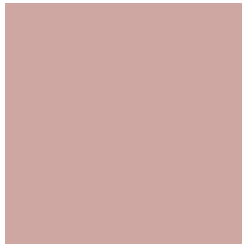
17.8730, 24.7700, 39.7954



0.9482, 1.3301, 2.0617

Previews

White Background



This preview shows how the XYZ color 45.6114, 43.0029, 40.0788 looks on a white background.

Color Contrast Check

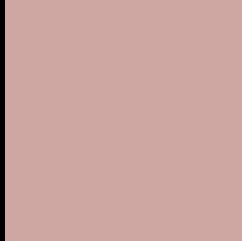
Large Text (above 18pt) WCAG AA × Fail

Any Text WCAG AA × Fail

Large Text (above 18pt) WCAG AAA × Fail

Any Text WCAG AAA × Fail

Black Background



This preview shows how the XYZ color 45.6114, 43.0029, 40.0788 looks on a black background.

Color Contrast Check

Large Text (above 18pt) WCAG AA ✓ Pass

Any Text WCAG AA ✓ Pass

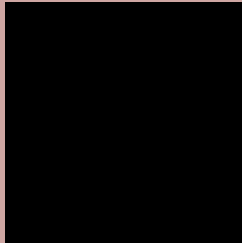
Large Text (above 18pt) WCAG AAA ✓ Pass

Any Text WCAG AAA ✓ Pass

If you want to check with other color combinations, try the [Color Contrast Checker](#).

XYZ 45.6114, 43.0029, 40.0788

Background



This preview shows how black text looks on a background with the XYZ color 45.6114, 43.0029, 40.0788.



This preview shows how white text looks on a background with the XYZ color 45.6114, 43.0029,

Color Blindness Simulation

Color vision deficiency is a very complex topic, and I could not describe the different causes any better than Wikipedia does, so if you want to learn more, you should check out their [article about color blindness](#).

Dichromacy



Original Color

45.6114, 43.0029, 40.0788

Protanopia

41.3611, 43.2737, 42.7319

Deuteranopia

43.9097, 42.9549, 39.6950



Tritanopia

47.1244, 43.0954, 46.9088

Trichromacy



Original Color

45.6114, 43.0029, 40.0788

Protanomaly

42.7793, 43.1688, 41.6750

Deuteranomaly

44.5230, 42.9960, 39.6706

Tritanomaly

46.5379, 43.1159, 44.3975

Monochromacy



Original Color

45.6114, 43.0029, 40.0788

Achromatopsia

42.3164, 44.5201, 48.4824

Achromatomaly

43.3215, 43.9420, 45.2281

CSS Examples

Text

The CSS property to change the color of the text to XYZ 45.6114, 43.0029, 40.0788 is called "color". The color property can be set on classes, ids or directly on the HTML element.

This example shows how text in the color `rgb(206, 166, 162)` looks like.

```
.text, #text, p{  
    color:rgb(206, 166, 162)  
}
```

If you want to add a text shadow in that color use the text-shadow property, you can generate a text shadow directly with our [CSS Text Shadow Generator](#).

Here you see how black text with a 4 pixel rgb(206, 166, 162) colored shadow looks like.

```
.shadow{ text-shadow: 4px 4px 2px rgb(206, 166, 162) }
```

Border

The CSS property to change the border of an element to XYZ 45.6114, 43.0029, 40.0788 is called "border". The border property can be set on classes, ids or directly on the HTML element.

This example shows the color as border, it can be applied via the CSS property "border" or "border-color".

```
.border, #border, table{ border:4px solid rgb(206, 166, 162) }
```


If only the border color should be changed use the property `border-color`.

```
.border{ border-color:rgb(206, 166, 162) }
```

If you want to add a box shadow in that color use:

Here you see how a box with a 4 pixel `rgb(206, 166, 162)` colored shadow looks like.

```
.boxshadow{ -moz-box-shadow:4px 4px 4px  
4px rgb(206, 166, 162); -webkit-box-  
shadow:4px 4px 4px 4px rgb(206, 166, 162);  
box-shadow:4px 4px 4px 4px rgb(206, 166,  
162) }
```

Background

The CSS property to change the background color of an element to XYZ 45.6114, 43.0029, 40.0788 is called "background". The background property can be set on classes, ids or directly on the HTML element.

```
.background, #background, body{  
background: rgb(206, 166, 162) }
```

If only the background color should be changed can be used:

```
.background{ background-color: rgb(206,  
166, 162) }
```

This example shows the color as background, it is applied via the CSS property "background".

To optimize and compress your CSS code, you can use our [online CSS compressor and optimizer](#) based on csstidy. If you want to create a linear or radial gradient as background or border, check our [CSS Gradient Generator](#).

Hey! You found this booklet interesting? Support Converting Colors with the new Membership Option!

The pro membership hides all ads, plus gives you double the colors in the color bucket, and more awesome pro features!

[Learn more, Memberships starting at \\$2.50/m!](#)

**Follow me
on Twitter!**

@ConvertingColor