

Converting Colors

XYZ(45.7344, 43.1167, 37.8102)

Have a look what the booklet for
XYZ(45.7344, 43.1167, 37.8102)
contains.

XYZ(45.7344, 43.1167, 37.8102)	3
<i>Conversions</i>	4
<i>Details</i>	6
<i>Harmonies</i>	12
<i>Previews</i>	24
<i>Color Blindness Simulation</i>	28
<i>CSS Examples</i>	31

Color

**XYZ(45.7344, 43.1167,
37.8102)**

Conversions

Conversions Part 1

Format	Color
Hex	D0A69D
RGB	208, 166, 157
RGB Percent	82%, 65%, 62%
CMY	0.1843, 0.3490, 0.3843
CMYK	0.00, 0.20, 0.25, 0.18
HSL	11°, 35%, 72%
HSV	11°, 25%, 82%
XYZ	45.7344, 43.1167, 37.8102
YIQ	177.5320, 27.9210, 6.1050

Conversions

Conversions Part 2

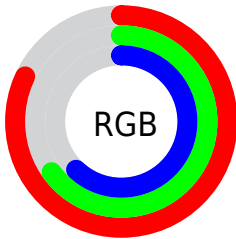
Format	Color
R_{YB}	208, 168, 157
Decimal	13674141
CIE Lab	71.63, 14.07, 10.52
CIE LCh	72, 17.569, 36.770
Yxy	43.1167, 0.3611, 0.3404
Android (android.graphics.Color)	4291864221 (0xFFD0A69D)
YUV	177.5320, -10.1223, 26.7204
Hunter-Lab	65.6633, 9.4142, 11.8240

Details

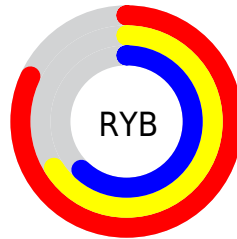
The XYZ color **45.7344, 43.1167, 37.8102** is a light color, and the websafe version is hex **CC9999**. A complement of this color would be **45.7125, 52.5673, 67.4117**, and the grayscale version is **42.1122, 44.3053, 48.2485**.

A 20% lighter version of the original color is **78.9801, 77.7264, 73.1273**, and **21.7557, 19.8475, 16.3200** is the 20% darker color. If you saturate the color by 10%, you get **41.1988, 36.6495, 28.2703**, and if you desaturate by 10%, it is **50.9893, 50.5382, 49.0824**.

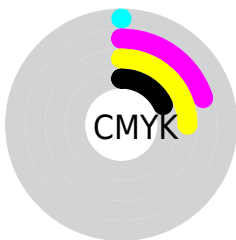
Distribution



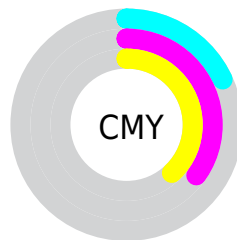
- Red (82%)
- Green (65%)
- Blue (62%)



- Red (82%)
- Yellow (66%)
- Blue (62%)



- Cyan (0%)
- Magenta (20%)
- Yellow (25%)
- Black (18%)





- Cyan (18%)
- Magenta (35%)
- Yellow (38%)

Brightness & Saturation Gradients


These gradients show how the XYZ color 45.7344, 43.1167, 37.8102 changes by changing the brightness by 10 percent. The first figure shows a shift by +10% for each color and the second figure -10%.


Similar to the brightness gradients but the following saturation gradients show a change of the XYZ color 45.7344, 43.1167, 37.8102 by changing the saturation by 10% instead.


 45.7344, 43.1167,
37.8102

 45.7344, 43.1167,
37.8102


360.4737,
359.0915, 352.0788

 32.2400, 29.9767,
25.5347


 83.0517, 79.8869,
73.0173

 21.7013, 19.8209,
16.2533


 107.6053,
104.2859, 96.7861

 13.7530, 12.2649,
9.5472


136.5760,
133.2068, 125.2229

 8.0296, 6.9244,
4.9982

170.3291,
167.0337, 158.7465

 4.1659, 3.4148,
2.1875

209.2302,
206.1513, 197.7754

 1.7964, 1.3520,
0.6671

253.6443,

 0.5155, 0.1809,

250.9439, 242.7280

0.0000

303.9371,
301.7958, 294.0230

■ 0.0000, 0.0000,
0.0000

■ 45.7344, 43.1167,
37.8102

■ 45.7344, 43.1167,
37.8102

■ 41.1988, 36.6495,
28.2703

■ 50.9893, 50.5382,
49.0824

■ 37.3475, 31.0918,
20.3739

■ 56.9897, 58.9444,
62.1642

■ 34.1477, 26.4044,
14.0285

■ 63.7646, 68.3717,
77.1315

■ 31.5623, 22.5428,
9.1312

■ 71.3405, 78.8530,
94.0551

■ 29.5507, 19.4582,
5.5666

■ 78.7610, 90.0271,
107.8336

■ 28.0667, 17.0969,
3.2016

■ 79.8224, 92.1499,
108.1874

■ 27.0566, 15.3978,
1.8750

■ 26.6654, 14.7159,
1.4350

Harmonies

Analogous

The Analogous color harmony consists of three colors that are next to each other on the color wheel.



46.9257, 43.1167, 45.0425



45.7344, 43.1167, 37.8102



43.2781, 43.1167, 33.4487

Triad

The Triadic color harmony groups three colors that are evenly spaced from another and form a triangle on the color wheel.



45.7344, 43.1167, 37.8102



35.9479, 43.1167, 40.7793



41.6589, 43.1167, 65.1590

Complementary

The Complementary color scheme is a pair of colors which are on the opposite of each other on the color wheel.



45.7344, 43.1167, 37.8102



45.7125, 52.5673, 67.4117

Split Complementary

Split-complementary colors differ from the complementary color scheme. The scheme consists of three colors, the original color and two neighbors of the complement color.



38.7669, 43.1167, 63.6608



45.7344, 43.1167, 37.8102



35.5611, 43.1167, 48.9039

Square

The Square scheme is like the rectangle color scheme, but the four colors are evenly spaced on the color wheel.



45.7344, 43.1167, 37.8102



37.6526, 43.1167, 35.0125



36.5692, 43.1167, 57.4480



44.5003, 43.1167, 61.3247

Rectangle

The Rectangle color scheme consists of four colors that form a rectangle on the color wheel.



45.7344, 43.1167, 37.8102



41.3041, 43.1167, 32.4210



36.5692, 43.1167, 57.4480



40.6598, 43.1167, 65.2688

Sweetspot

The Sweet Spot groups the original color and five complimentary colors.



45.7356, 43.1187, 37.8111



87.7969, 89.8811, 92.9571



48.4366, 41.6711, 59.8283



18.6645, 19.0596, 19.6174



0.0000, 0.0000, 0.0000



20.3446, 21.4041, 23.3091

Same Dimension

The Same Dimension uses a secret algorithm to generate beautiful new colors.



45.7356, 43.1187, 37.8111



68.9011, 63.2292, 52.3159



50.7293, 53.1061, 39.4757



11.9751, 12.1409, 12.3243



16.6695, 9.2720, 0.9111



0.9847, 0.6237, 0.0685

Inverse Universe

The Inverse Universe completely reimagines the original color for something new.



45.7125, 52.5673, 67.4117



68.8532, 80.5205, 106.5208



40.4263, 41.9947, 65.6496



11.9734, 13.0371, 15.1290



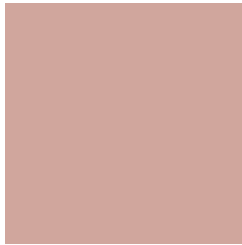
16.2686, 21.1838, 40.4239



0.9573, 1.2798, 2.2761

Previews

White Background



This preview shows how the XYZ color 45.7344, 43.1167, 37.8102 looks on a white background.

Color Contrast Check

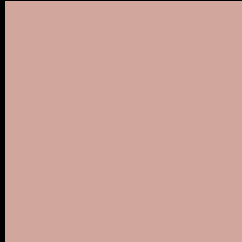
Large Text (above 18pt) WCAG AA × Fail

Any Text WCAG AA × Fail

Large Text (above 18pt) WCAG AAA × Fail

Any Text WCAG AAA × Fail

Black Background



This preview shows how the XYZ color 45.7344, 43.1167, 37.8102 looks on a black background.

Color Contrast Check

Large Text (above 18pt) WCAG AA ✓ Pass

Any Text WCAG AA ✓ Pass

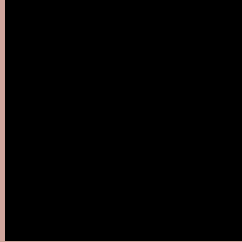
Large Text (above 18pt) WCAG AAA ✓ Pass

Any Text WCAG AAA ✓ Pass

If you want to check with other color combinations, try the [Color Contrast Checker](#).

XYZ 45.7344, 43.1167, 37.8102

Background



This preview shows how black text looks on a background with the XYZ color 45.7344, 43.1167, 37.8102.



This preview shows how white text looks on a background with the XYZ color 45.7344, 43.1167,

Color Blindness Simulation

Color vision deficiency is a very complex topic, and I could not describe the different causes any better than Wikipedia does, so if you want to learn more, you should check out their [article about color blindness](#).

Dichromacy



Original Color

45.7344, 43.1167, 37.8102

Protanopia

41.1430, 43.2137, 40.3550

Deuteranopia

44.0081, 43.0556, 37.4436



Tritanopia

47.5120, 43.0306, 46.8759

Trichromacy



Original Color

45.7344, 43.1167, 37.8102

Protanomaly

42.5835, 43.1195, 39.3362

Deuteranomaly

44.6320, 43.1021, 37.4197

Tritanomaly

46.7314, 42.9708, 43.3673

Monochromacy



Original Color

45.7344, 43.1167, 37.8102

Achromatopsia

42.3164, 44.5201, 48.4824

Achromatomaly

43.3780, 43.9932, 44.2355

CSS Examples

Text

The CSS property to change the color of the text to XYZ 45.7344, 43.1167, 37.8102 is called "color". The color property can be set on classes, ids or directly on the HTML element.

This example shows how text in the color `rgb(208, 166, 157)` looks like.

```
.text, #text, p{  
    color:rgb(208, 166, 157)  
}
```

If you want to add a text shadow in that color use the text-shadow property, you can generate a text shadow directly with our [CSS Text Shadow Generator](#).

Here you see how black text with a 4 pixel rgb(208, 166, 157) colored shadow looks like.

```
.shadow{ text-shadow: 4px 4px 2px rgb(208, 166, 157) }
```

Border

The CSS property to change the border of an element to XYZ 45.7344, 43.1167, 37.8102 is called "border". The border property can be set on classes, ids or directly on the HTML element.

This example shows the color as border, it can be applied via the CSS property "border" or "border-color".

```
.border, #border, table{ border:4px solid rgb(208, 166, 157) }
```


If only the border color should be changed use the property `border-color`.

```
.border{ border-color:rgb(208, 166, 157) }
```

If you want to add a box shadow in that color use:

Here you see how a box with a 4 pixel `rgb(208, 166, 157)` colored shadow looks like.

```
.boxshadow{ -moz-box-shadow:4px 4px 4px  
4px rgb(208, 166, 157); -webkit-box-  
shadow:4px 4px 4px 4px rgb(208, 166, 157);  
box-shadow:4px 4px 4px 4px rgb(208, 166,  
157) }
```

Background

The CSS property to change the background color of an element to XYZ 45.7344, 43.1167, 37.8102 is called "background". The background property can be set on classes, ids or directly on the HTML element.

```
.background, #background, body{  
background: rgb(208, 166, 157) }
```

If only the background color should be changed can be used:

```
.background{ background-color: rgb(208,  
166, 157) }
```

This example shows the color as background, it is applied via the CSS property "background".

To optimize and compress your CSS code, you can use our [online CSS compressor and optimizer](#) based on csstidy. If you want to create a linear or radial gradient as background or border, check our [CSS Gradient Generator](#).

Hey! You found this booklet interesting? Support Converting Colors with the new Membership Option!

The pro membership hides all ads, plus gives you double the colors in the color bucket, and more awesome pro features!

[Learn more, Memberships starting at \\$2.50/m!](#)

**Follow me
on Twitter!**

@ConvertingColor