

Converting Colors

XYZ(45.7389, 44.7754, 51.0316)

Have a look what the booklet for
XYZ(45.7389, 44.7754, 51.0316)
contains.

XYZ(45.7389, 44.7754, 51.0316)	3
<i>Conversions</i>	4
<i>Details</i>	6
<i>Harmonies</i>	12
<i>Previews</i>	24
<i>Color Blindness Simulation</i>	28
<i>CSS Examples</i>	31

Color

**XYZ(45.7389, 44.7754,
51.0316)**

Conversions

Conversions Part 1

Format	Color
Hex	C2ADB7
RGB	194, 173, 183
RGB Percent	76%, 68%, 72%
CMY	0.2392, 0.3215, 0.2823
CMYK	0.00, 0.11, 0.06, 0.24
HSL	331°, 15%, 72%
HSV	331°, 11%, 76%
XYZ	45.7389, 44.7754, 51.0316
YIQ	180.4190, 9.3060, 7.5620

Conversions

Conversions Part 2

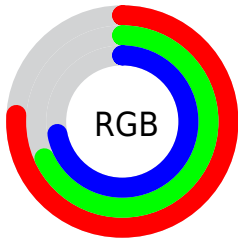
Format	Color
RYB	194, 173, 183
Decimal	12758455
CIELab	72.74, 9.30, -2.35
CIELCh	73, 9.595, 345.836
Yxy	44.7754, 0.3231, 0.3163
Android (android.graphics.Color)	4290948535 (0xFFC2ADB7)
YUV	180.4190, 1.2724, 11.9105
Hunter-Lab	66.9144, 4.9122, 1.6232

Details

The XYZ color **45.7389, 44.7754, 51.0316** is a light color, and the websafe version is hex **CCCCCC**. A complement of this color would be **45.1788, 50.9295, 52.7989**, and the grayscale version is **43.5985, 45.8691, 49.9514**.

A 20% lighter version of the original color is **83.1071, 82.2280, 93.1527**, and **21.6819, 20.8619, 24.0031** is the 20% darker color. If you saturate the color by 10%, you get **41.2659, 37.4612, 44.5087**, and if you desaturate by 10%, it is **50.8310, 53.2044, 58.1388**.

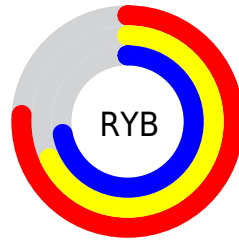
Distribution



Red (76%)

Green (68%)

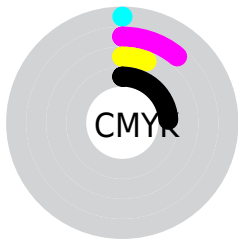
Blue (72%)



Red (76%)

Yellow (68%)

Blue (72%)

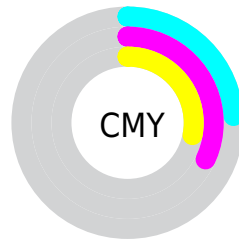


Cyan (0%)

Magenta (11%)

Yellow (6%)

Black (24%)



Cyan (24%)

Magenta (32%)

Yellow (28%)

Brightness & Saturation Gradients

These gradients show how the XYZ color 45.7389, 44.7754, 51.0316 changes by changing the brightness by 10 percent. The first figure shows a shift by +10% for each color and the second figure -10%.

Similar to the brightness gradients but the following saturation gradients show a change of the XYZ color 45.7389, 44.7754, 51.0316 by changing the saturation by 10% instead.

■ 45.7389, 44.7754,
51.0316

■ 45.7389, 44.7754,
51.0316

360.4915,
365.8632, 407.5366

■ 32.2436, 31.2806,
35.8569

■ 83.0584, 82.3833,
93.1135

■ 21.7041, 20.8126,
24.0348

107.6132,
107.2651, 120.8577

■ 13.7550, 12.9871,
15.1470

136.5853,
136.7114, 153.6288

■ 8.0310, 7.4196,
8.7749

170.3400,
171.1065, 191.8453

■ 4.1668, 3.7259,
4.4998

209.2426,
210.8348, 235.9258

■ 1.7969, 1.5214,
1.9034

253.6584,

■ 0.5158, 0.3038,

256.2808, 286.2888

0.4949

303.9530,
307.8288, 343.3529

■ 0.0000, 0.0000,
0.0000

■ 45.7389, 44.7754,
51.0316

■ 45.7389, 44.7754,
51.0316

■ 41.2659, 37.4612,
44.5087

■ 50.8310, 53.2044,
58.1388

■ 37.3834, 31.2089,
38.5512

■ 56.5617, 62.7864,
65.8430

■ 34.0662, 25.9702,
33.1429

■ 62.9544, 73.5652,
74.1598

■ 31.2857, 21.6904,
28.2660

■ 70.0300, 85.5804,
83.1036

■ 29.0105, 18.3099,
23.9011

■ 72.8335, 88.9195,
91.0296

■ 27.2061, 15.7624,
20.0276

■ 74.3347, 89.5200,
98.9346

■ 25.8329, 13.9720,
16.6230

■ 75.9210, 90.1545,
107.2879

■ 24.8446, 12.8490,
13.6616

■ 76.0583, 90.2094,
108.0112

■ 24.1961, 12.2486,
11.2984

Harmonies

Analogous

The Analogous color harmony consists of three colors that are next to each other on the color wheel.



44.8965, 44.7754, 55.4259



45.7389, 44.7754, 51.0316



45.7135, 44.7754, 46.2925

Triad

The Triadic color harmony groups three colors that are evenly spaced from another and form a triangle on the color wheel.



45.7389, 44.7754, 51.0316



41.6897, 44.7754, 40.4509



40.3653, 44.7754, 55.6325

Complementary

The Complementary color scheme is a pair of colors which are on the opposite of each other on the color wheel.



45.7389, 44.7754, 51.0316



45.1788, 50.9295, 52.7989

Split Complementary

Split-complementary colors differ from the complementary color scheme. The scheme consists of three colors, the original color and two neighbors of the complement color.



39.5505, 44.7754, 51.2987



45.7389, 44.7754, 51.0316



40.3015, 44.7754, 42.6380

Square

The Square scheme is like the rectangle color scheme, but the four colors are evenly spaced on the color wheel.



45.7389, 44.7754, 51.0316



43.3461, 44.7754, 40.3898



39.5275, 44.7754, 46.5429



41.7789, 44.7754, 58.1972

Rectangle

The Rectangle color scheme consists of four colors that form a rectangle on the color wheel.



45.7389, 44.7754, 51.0316



45.2070, 44.7754, 43.5778



39.5275, 44.7754, 46.5429



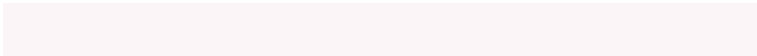
40.0139, 44.7754, 54.3221

Sweetspot

The Sweet Spot groups the original color and five complimentary colors.



45.7402, 44.7774, 51.0326



89.9413, 92.8170, 102.3749



44.4141, 43.9562, 57.1829



19.5265, 20.0443, 22.1843



0.0000, 0.0000, 0.0000



20.3446, 21.4041, 23.3091

Same Dimension

The Same Dimension uses a secret algorithm to generate beautiful new colors.



45.7402, 44.7774, 51.0326



80.8372, 77.7858, 89.5456



44.8033, 44.5101, 45.7675



10.2684, 10.1560, 11.5039



15.9490, 8.0694, 7.6437



0.7239, 0.3626, 0.5136

Inverse Universe

The Inverse Universe completely reimagines the original color for something new.



45.7402, 44.7774, 51.0326



80.8372, 77.7858, 89.5456



46.1865, 51.2082, 58.4892



10.2684, 10.1560, 11.5039



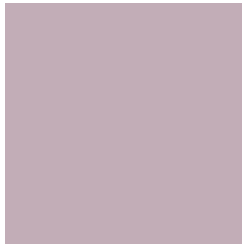
15.9490, 8.0694, 7.6437



0.7239, 0.3626, 0.5136

Previews

White Background



This preview shows how the XYZ color 45.7389, 44.7754, 51.0316 looks on a white background.

Color Contrast Check

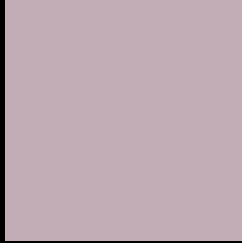
Large Text (above 18pt) WCAG AA × Fail

Any Text WCAG AA × Fail

Large Text (above 18pt) WCAG AAA × Fail

Any Text WCAG AAA × Fail

Black Background



This preview shows how the XYZ color 45.7389, 44.7754, 51.0316 looks on a black background.

Color Contrast Check

Large Text (above 18pt) WCAG AA ✓ Pass

Any Text WCAG AA ✓ Pass

Large Text (above 18pt) WCAG AAA ✓ Pass

Any Text WCAG AAA ✓ Pass

If you want to check with other color combinations, try the [Color Contrast Checker](#).

XYZ 45.7389, 44.7754, 51.0316

Background



This preview shows how black text looks on a background with the XYZ color 45.7389, 44.7754, 51.0316.



This preview shows how white text looks on a background with the XYZ color 45.7389, 44.7754,

Color Blindness Simulation

Color vision deficiency is a very complex topic, and I could not describe the different causes any better than Wikipedia does, so if you want to learn more, you should check out their [article about color blindness](#).

Dichromacy



Original Color

45.7389, 44.7754, 51.0316

Protanopia

43.6057, 45.0893, 52.8592

Deuteranopia

45.7389, 44.7754, 51.0316



Tritanopia

46.0546, 44.9016, 52.6939

Trichromacy



Original Color

45.7389, 44.7754, 51.0316

Protanomaly

44.2899, 44.8677, 52.2250

Deuteranomaly

45.7389, 44.7754, 51.0316

Tritanomaly

45.9487, 44.8593, 52.1359

Monochromacy



Original Color

45.7389, 44.7754, 51.0316

Achromatopsia

43.3819, 45.6411, 49.7032

Achromatomaly

44.0702, 45.0948, 50.0975

CSS Examples

Text

The CSS property to change the color of the text to XYZ 45.7389, 44.7754, 51.0316 is called "color". The color property can be set on classes, ids or directly on the HTML element.

This example shows how text in the color `rgb(194, 173, 183)` looks like.

```
.text, #text, p{  
    color:rgb(194, 173, 183)  
}
```

If you want to add a text shadow in that color use the text-shadow property, you can generate a text shadow directly with our [CSS Text Shadow Generator](#).

Here you see how black text with a 4 pixel rgb(194, 173, 183) colored shadow looks like.

```
.shadow{ text-shadow: 4px 4px 2px rgb(194, 173, 183) }
```

Border

The CSS property to change the border of an element to XYZ 45.7389, 44.7754, 51.0316 is called "border". The border property can be set on classes, ids or directly on the HTML element.

This example shows the color as border, it can be applied via the CSS property "border" or "border-color".

```
.border, #border, table{ border:4px solid rgb(194, 173, 183) }
```


If only the border color should be changed use the property `border-color`.

```
.border{ border-color:rgb(194, 173, 183) }
```

If you want to add a box shadow in that color use:

Here you see how a box with a 4 pixel `rgb(194, 173, 183)` colored shadow looks like.

```
.boxshadow{ -moz-box-shadow:4px 4px 4px  
4px rgb(194, 173, 183); -webkit-box-  
shadow:4px 4px 4px 4px rgb(194, 173, 183);  
box-shadow:4px 4px 4px 4px rgb(194, 173,  
183) }
```

Background

The CSS property to change the background color of an element to XYZ 45.7389, 44.7754, 51.0316 is called "background". The background property can be set on classes, ids or directly on the HTML element.

```
.background, #background, body{  
background: rgb(194, 173, 183) }
```

If only the background color should be changed can be used:

```
.background{ background-color: rgb(194,  
173, 183) }
```

This example shows the color as background, it is applied via the CSS property "background".

To optimize and compress your CSS code, you can use our [online CSS compressor and optimizer](#) based on csstidy. If you want to create a linear or radial gradient as background or border, check our [CSS Gradient Generator](#).

Hey! You found this booklet interesting? Support Converting Colors with the new Membership Option!

The pro membership hides all ads, plus gives you double the colors in the color bucket, and more awesome pro features!

[Learn more, Memberships starting at \\$2.50/m!](#)

**Follow me
on Twitter!**

@ConvertingColor