

# Converting Colors

XYZ(45.8031, 45.0902, 46.1306)

Have a look what the booklet for  
XYZ(45.8031, 45.0902, 46.1306)  
contains.

<b>XYZ(45.8020, 45.1984, 46.3545)</b> .....	3
<b><i>Conversions</i></b> .....	4
<b><i>Details</i></b> .....	6
<b><i>Harmonies</i></b> .....	12
<b><i>Previews</i></b> .....	24
<b><i>Color Blindness Simulation</i></b> .....	28
<b><i>CSS Examples</i></b> .....	31

# Color

**XYZ(45.8020, 45.1984,  
46.3545)**

# Conversions

## Conversions Part 1

<b>Format</b>	<b>Color</b>
Hex	C5AEAE
RGB	197, 174, 174
RGB Percent	77%, 68%, 68%
CMY	0.2274, 0.3176, 0.3176
CMYK	0.00, 0.12, 0.12, 0.23
HSL	0°, 17%, 73%
HSV	0°, 12%, 77%
XYZ	45.8020, 45.1984, 46.3545
YIQ	180.8770, 13.7080, 4.8760

# Conversions

## Conversions Part 2

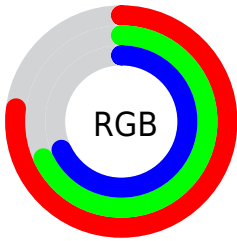
Format	Color
<a href="#">RYB</a>	<a href="#">197, 174, 174</a>
Decimal	<a href="#">12955310</a>
CIELab	<a href="#">73.02, 8.28, 3.03</a>
CIElCh	<a href="#">73, 8.820, 20.104</a>
Yxy	<a href="#">45.1984, 0.3335, 0.3291</a>
Android (android.graphics.Color)	<a href="#">4291145390</a> ( <a href="#">0xFFC5AEAE</a> )
YUV	<a href="#">180.8770, -3.3904, 14.1399</a>
Hunter-Lab	<a href="#">67.2298, 3.9556, 6.1807</a>

# Details

The XYZ color **45.8020, 45.1984, 46.3545** is a light color, and the websafe version is hex **CCCCCC**. A complement of this color would be **47.4996, 52.9614, 60.5430**, and the grayscale version is **43.8681, 46.1527, 50.2603**.

A 20% lighter version of the original color is **83.0352, 82.7666, 85.7279**, and **21.8001, 21.1638, 21.3484** is the 20% darker color. If you saturate the color by 10%, you get **40.4905, 37.4265, 35.7934**, and if you desaturate by 10%, it is **51.9558, 54.2030, 58.5871**.

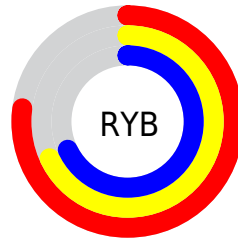
# Distribution



Red (77%)

Green (68%)

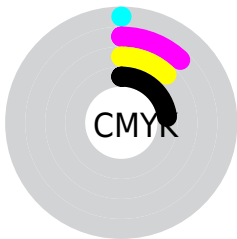
Blue (68%)



Red (77%)

Yellow (68%)

Blue (68%)

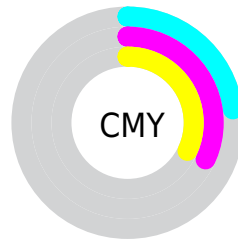


Cyan (0%)

Magenta (12%)

Yellow (12%)

Black (23%)



Cyan (23%)

Magenta (32%)


Yellow (32%)


# Brightness & Saturation Gradients

These gradients show how the XYZ color 45.8020, 45.1984, 46.3545 changes by changing the brightness by 10 percent. The first figure shows a shift by +10% for each color and the second figure -10%.


Similar to the brightness gradients but the following saturation gradients show a change of the XYZ color 45.8020, 45.1984, 46.3545 by changing the saturation by 10% instead.





 45.8020, 45.1984,  
46.3545

 45.8020, 45.1984,  
46.3545


360.7413,  
367.5765, 388.5509

 32.2936, 31.6137,  
32.1750


 83.1523, 83.0181,  
86.0892

 21.7425, 21.0666,  
21.2293


107.7248,  
108.0218, 112.4814

 13.7833, 13.1727,  
13.0988


136.7161,  
137.6007, 143.7815

 8.0508, 7.5476,  
7.3651

170.4915,  
172.1392, 180.4082

 4.1796, 3.8069,  
3.6096

209.4164,  
212.0216, 222.7800

 1.8042, 1.5661,  
1.4137

253.8561,

 0.5202, 0.3346,

257.6324, 271.3153

0.1524

304.1760,  
309.3559, 326.4328

■ 0.0000, 0.0000,  
0.0000

■ 45.8020, 45.1984,  
46.3545

■ 45.8020, 45.1984,  
46.3545

■ 40.4905, 37.4265,  
35.7934

■ 51.9558, 54.2030,  
58.5871

■ 35.9811, 30.8280,  
26.8286

■ 58.9822, 64.4843,  
72.5563

■ 32.2359, 25.3477,  
19.3834

■ 66.9148, 76.0916,  
88.3272

■ 29.2126, 20.9238,  
13.3734

■ 75.7842, 89.0696,  
105.9607

■ 26.8649, 17.4882,  
8.7065

■ 76.8362, 90.6104,  
108.0476

■ 25.1407, 14.9652,  
5.2794

■ 23.9808, 13.2678,  
2.9741

■ 23.3144, 12.2925,  
1.6499

■ 23.0265, 11.8711,  
1.0777

# Harmonies

## Analogous

The Analogous color harmony consists of three colors that are next to each other on the color wheel.



45.9445, 45.1984, 50.6858



45.8020, 45.1984, 46.3545



44.8879, 45.1984, 42.9873

# Triad

The Triadic color harmony groups three colors that are evenly spaced from another and form a triangle on the color wheel.



45.8020, 45.1984, 46.3545



40.7269, 45.1984, 43.9700



42.4526, 45.1984, 58.0530

# Complementary

The Complementary color scheme is a pair of colors which are on the opposite of each other on the color wheel.



45.8020, 45.1984, 46.3545



47.4996, 52.9614, 60.5430

# Split Complementary

Split-complementary colors differ from the complementary color scheme. The scheme consists of three colors, the original color and two neighbors of the complement color.



41.0876, 45.1984, 56.0134



45.8020, 45.1984, 46.3545



40.1071, 45.1984, 47.7697

# Square

The Square scheme is like the rectangle color scheme, but the four colors are evenly spaced on the color wheel.



45.8020, 45.1984, 46.3545



41.9495, 45.1984, 41.6687



40.2375, 45.1984, 52.1874



43.9860, 45.1984, 57.6179



# Rectangle

The Rectangle color scheme consists of four colors that form a rectangle on the color wheel.



45.8020, 45.1984, 46.3545



43.9757, 45.1984, 41.6592



40.2375, 45.1984, 52.1874



41.9595, 45.1984, 57.6296

# Sweetspot

The Sweet Spot groups the original color and five complimentary colors.



45.8033, 45.2004, 46.3555



90.2833, 93.0252, 99.4234



48.2406, 46.1743, 59.1938



19.1386, 19.6394, 20.9115



0.0000, 0.0000, 0.0000



20.3446, 21.4041, 23.3091



# Same Dimension

The Same Dimension uses a secret algorithm to generate beautiful new colors.



45.8033, 45.2004, 46.3555



79.4770, 77.2129, 77.9398



48.1203, 49.8344, 47.1278



10.6340, 10.6372, 11.0555



15.1455, 7.8082, 0.7089



0.7172, 0.3698, 0.0336



# Inverse Universe

The Inverse Universe completely reimagines the original color for something new.



47.4996, 52.9614, 60.5430



83.1120, 93.8431, 108.3408



44.9879, 47.9380, 59.7057



10.9466, 12.0673, 13.6698



19.7571, 28.9081, 39.2829

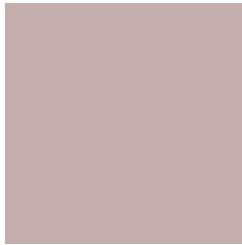


0.9355, 1.3689, 1.8601



# Previews

## White Background



This preview shows how the XYZ color 45.8020, 45.1984, 46.3545 looks on a white background.

## Color Contrast Check

Large Text (above 18pt) WCAG AA × Fail

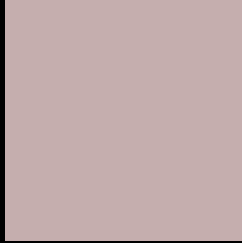
Any Text WCAG AA × Fail

Large Text (above 18pt) WCAG AAA × Fail

Any Text WCAG AAA × Fail



# Black Background



This preview shows how the XYZ color 45.8020, 45.1984, 46.3545 looks on a black background.

## Color Contrast Check

Large Text (above 18pt) WCAG AA ✓ Pass

Any Text WCAG AA ✓ Pass

Large Text (above 18pt) WCAG AAA ✓ Pass

Any Text WCAG AAA ✓ Pass

If you want to check with other color combinations, try the [Color Contrast Checker](#).

# XYZ 45.8020, 45.1984, 46.3545

## Background



This preview shows how black text looks on a background with the XYZ color 45.8020, 45.1984, 46.3545.



This preview shows how white text looks on a background with the XYZ color 45.8020, 45.1984,



# Color Blindness Simulation

Color vision deficiency is a very complex topic, and I could not describe the different causes any better than Wikipedia does, so if you want to learn more, you should check out their [article about color blindness](#).

## Dichromacy



### Original Color

45.8020, 45.1984, 46.3545

### Protanopia

43.5844, 45.4818, 48.0767

### Deuteranopia

46.1367, 45.0852, 46.3151



## Tritanopia

47.1686, 45.1923, 52.6913

# Trichromacy



## Original Color

45.8020, 45.1984, 46.3545

## Protanomaly

44.2977, 45.2702, 47.4776

## Deuteranomaly

45.8723, 44.9489, 46.3027

## Tritanomaly

46.6758, 45.2703, 50.5339

# Monochromacy



## Original Color

45.8020, 45.1984, 46.3545

## Achromatopsia

43.9204, 46.2077, 50.3202

## Achromatomaly

44.4498, 45.6199, 48.5823

# CSS Examples

## Text

The CSS property to change the color of the text to XYZ 45.8020, 45.1984, 46.3545 is called "color". The color property can be set on classes, ids or directly on the HTML element.

This example shows how text in the color `rgb(197, 174, 174)` looks like.

```
.text, #text, p{  
    color:rgb(197, 174, 174)  
}
```

If you want to add a text shadow in that color use the text-shadow property, you can generate a text shadow directly with our [CSS Text Shadow Generator](#).

Here you see how black text with a 4 pixel rgb(197, 174, 174) colored shadow looks like.

```
.shadow{ text-shadow: 4px 4px 2px rgb(197, 174, 174) }
```

## Border

The CSS property to change the border of an element to XYZ 45.8020, 45.1984, 46.3545 is called "border". The border property can be set on classes, ids or directly on the HTML element.

This example shows the color as border, it can be applied via the CSS property "border" or "border-color".

```
.border, #border, table{ border:4px solid rgb(197, 174, 174) }
```



If only the border color should be changed use the property `border-color`.

```
.border{ border-color:rgb(197, 174, 174) }
```

If you want to add a box shadow in that color use:

Here you see how a box with a 4 pixel `rgb(197, 174, 174)` colored shadow looks like.

```
.boxshadow{ -moz-box-shadow:4px 4px 4px  
4px rgb(197, 174, 174); -webkit-box-  
shadow:4px 4px 4px 4px rgb(197, 174, 174);  
box-shadow:4px 4px 4px 4px rgb(197, 174,  
174) }
```

# Background

The CSS property to change the background color of an element to XYZ 45.8020, 45.1984, 46.3545 is called "background". The background property can be set on classes, ids or directly on the HTML element.

```
.background, #background, body{  
background: rgb(197, 174, 174) }
```

If only the background color should be changed can be used:

```
.background{ background-color: rgb(197,  
174, 174) }
```

This example shows the color as background, it is applied via the CSS property "background".

To optimize and compress your CSS code, you can use our [online CSS compressor and optimizer](#) based on csstidy. If you want to create a linear or radial gradient as background or border, check our [CSS Gradient Generator](#).

Hey! You found this booklet interesting? Support Converting Colors with the new Membership Option!

The pro membership hides all ads, plus gives you double the colors in the color bucket, and more awesome pro features!

**[Learn more, Memberships starting at \\$2.50/m!](#)**

**Follow me  
on Twitter!**

@ConvertingColor