

Converting Colors

XYZ(45.8188, 45.4235, 49.5374)

Have a look what the booklet for
XYZ(45.8188, 45.4235, 49.5374)
contains.

XYZ(45.8163, 45.4246, 49.5331)	3
<i>Conversions</i>	4
<i>Details</i>	6
<i>Harmonies</i>	12
<i>Previews</i>	24
<i>Color Blindness Simulation</i>	28
<i>CSS Examples</i>	31

Color

**XYZ(45.8163, 45.4246,
49.5331)**

Conversions

Conversions Part 1

Format	Color
Hex	C2AFB4
RGB	194, 175, 180
RGB Percent	76%, 69%, 71%
CMY	0.2392, 0.3137, 0.2941
CMYK	0.00, 0.10, 0.07, 0.24
HSL	344°, 13%, 72%
HSV	344°, 10%, 76%
XYZ	45.8163, 45.4246, 49.5331
YIQ	181.2510, 9.7190, 5.5830

Conversions

Conversions Part 2

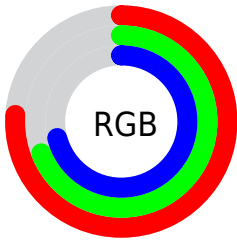
Format	Color
RYB	194, 175, 180
Decimal	12758964
CIELab	73.17, 7.68, -0.08
CIELCh	73, 7.684, 359.433
Yxy	45.4246, 0.3255, 0.3227
Android (android.graphics.Color)	4290949044 (0xFFC2AFB4)
YUV	181.2510, -0.6167, 11.1809
Hunter-Lab	67.3978, 3.3963, 3.6040

Details

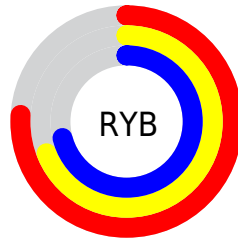
The XYZ color **45.8163, 45.4246, 49.5331** is a light color, and the websafe version is hex **CCCCCC**. A complement of this color would be **46.1580, 51.3727, 55.6297**, and the grayscale version is **44.0574, 46.3518, 50.4771**.

A 20% lighter version of the original color is **83.4999, 83.7172, 91.1150**, and **21.7289, 21.2737, 23.0397** is the 20% darker color. If you saturate the color by 10%, you get **40.9264, 37.8562, 41.0841**, and if you desaturate by 10%, it is **51.4015, 54.1420, 58.9562**.

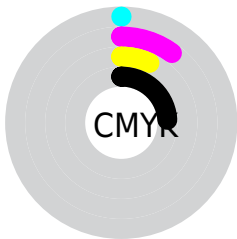
Distribution



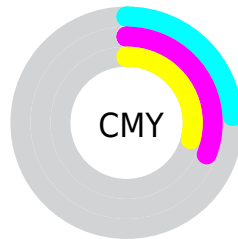
- Red (76%)
- Green (69%)
- Blue (71%)



- Red (76%)
- Yellow (69%)
- Blue (71%)



- Cyan (0%)
- Magenta (10%)
- Yellow (7%)
- Black (24%)





- Cyan (24%)
- Magenta (31%)
- Yellow (29%)

Brightness & Saturation Gradients


These gradients show how the XYZ color 45.8163, 45.4246, 49.5331 changes by changing the brightness by 10 percent. The first figure shows a shift by +10% for each color and the second figure -10%.

Similar to the brightness gradients but the following saturation gradients show a change of the XYZ color 45.8163, 45.4246, 49.5331 by changing the saturation by 10% instead.

 45.8163, 45.4246,
49.5331

 45.8163, 45.4246,
49.5331


360.7980,
368.4905, 401.5199

 32.3049, 31.7920,
34.6740


 83.1736, 83.3572,
90.8719

 21.7512, 21.2027,
23.1303


107.7501,
108.4260, 118.1886

 13.7897, 13.2722,
14.4835


136.7458,
138.0756, 150.4950

 8.0553, 7.6163,
8.3152

170.5259,
172.6905, 188.2095

 4.1825, 3.8504,
4.2066

209.4558,
212.6551, 231.7507

 1.8059, 1.5902,
1.7394

253.9009,

 0.5212, 0.3510,

258.3536, 281.5371

0.3875

304.2265,
310.1707, 337.9874

■ 0.0000, 0.0000,
0.0000

■ 45.8163, 45.4246,
49.5331

■ 45.8163, 45.4246,
49.5331

■ 40.9264, 37.8562,
41.0841

■ 51.4015, 54.1420,
58.9562

■ 36.7003, 31.3831,
33.5749

■ 57.7042, 64.0474,
69.3806

■ 33.1101, 25.9558,
26.9730

■ 64.7502, 75.1854,
80.8361

■ 30.1239, 21.5191,
21.2432

■ 72.5630, 87.5965,
93.3501

■ 27.7073, 18.0125,
16.3479

■ 75.4979, 89.9853,
105.0602

■ 25.8222, 15.3689,
12.2464

■ 76.0583, 90.2094,
108.0112

■ 24.4256, 13.5119,
8.8947

■ 23.4673, 12.3518,
6.2434

■ 22.8575, 11.7201,
4.2272

Harmonies

Analogous

The Analogous color harmony consists of three colors that are next to each other on the color wheel.



45.4431, 45.4246, 53.3279



45.8163, 45.4246, 49.5331



45.4696, 45.4246, 45.9040

Triad

The Triadic color harmony groups three colors that are evenly spaced from another and form a triangle on the color wheel.



45.8163, 45.4246, 49.5331



41.9146, 45.4246, 43.2776



41.8711, 45.4246, 56.1242

Complementary

The Complementary color scheme is a pair of colors which are on the opposite of each other on the color wheel.



45.8163, 45.4246, 49.5331



46.1580, 51.3727, 55.6297

Split Complementary

Split-complementary colors differ from the complementary color scheme. The scheme consists of three colors, the original color and two neighbors of the complement color.



40.9584, 45.4246, 53.1944



45.8163, 45.4246, 49.5331



40.9832, 45.4246, 45.7831

Square

The Square scheme is like the rectangle color scheme, but the four colors are evenly spaced on the color wheel.



45.8163, 45.4246, 49.5331



43.2004, 45.4246, 42.4081



40.6367, 45.4246, 49.3863



43.1491, 45.4246, 57.2525

Rectangle

The Rectangle color scheme consists of four colors that form a rectangle on the color wheel.



45.8163, 45.4246, 49.5331



44.8808, 45.4246, 44.0370



40.6367, 45.4246, 49.3863



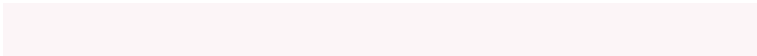
41.5124, 45.4246, 55.3101

Sweetspot

The Sweet Spot groups the original color and five complimentary colors.



45.8176, 45.4266, 49.5341



89.6913, 92.7170, 101.0583



46.0388, 45.3674, 57.3696



19.4576, 20.0167, 21.8213



0.0000, 0.0000, 0.0000



20.3446, 21.4041, 23.3091

Same Dimension

The Same Dimension uses a secret algorithm to generate beautiful new colors.



45.8176, 45.4266, 49.5341



80.7712, 78.8252, 85.9121



46.1945, 46.9805, 47.1934



10.1795, 10.1204, 11.0360



15.0500, 7.7098, 2.9095



0.6798, 0.3449, 0.2811

Inverse Universe

The Inverse Universe completely reimagines the original color for something new.



45.8176, 45.4266, 49.5341



80.7712, 78.8252, 85.9121



45.7381, 49.6498, 58.2121



10.1795, 10.1204, 11.0360



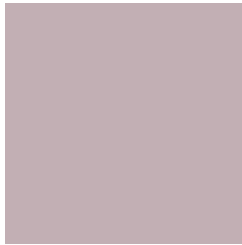
15.0500, 7.7098, 2.9095



0.6798, 0.3449, 0.2811

Previews

White Background



This preview shows how the XYZ color 45.8163, 45.4246, 49.5331 looks on a white background.

Color Contrast Check

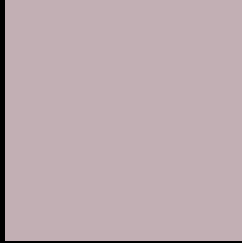
Large Text (above 18pt) WCAG AA × Fail

Any Text WCAG AA × Fail

Large Text (above 18pt) WCAG AAA × Fail

Any Text WCAG AAA × Fail

Black Background



This preview shows how the XYZ color 45.8163, 45.4246, 49.5331 looks on a black background.

Color Contrast Check

Large Text (above 18pt) WCAG AA ✓ Pass

Any Text WCAG AA ✓ Pass

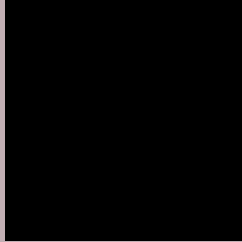
Large Text (above 18pt) WCAG AAA ✓ Pass

Any Text WCAG AAA ✓ Pass

If you want to check with other color combinations, try the [Color Contrast Checker](#).

XYZ 45.8163, 45.4246, 49.5331

Background



This preview shows how black text looks on a background with the XYZ color 45.8163, 45.4246, 49.5331.



This preview shows how white text looks on a background with the XYZ color 45.8163, 45.4246,

Color Blindness Simulation

Color vision deficiency is a very complex topic, and I could not describe the different causes any better than Wikipedia does, so if you want to learn more, you should check out their [article about color blindness](#).

Dichromacy



Original Color

45.8163, 45.4246, 49.5331

Protanopia

43.8550, 45.5627, 50.7390

Deuteranopia

46.4002, 45.4377, 49.5048



Tritanopia

46.6114, 45.4621, 53.3321

Trichromacy



Original Color

45.8163, 45.4246, 49.5331

Protanomaly

44.5106, 45.6161, 50.1749

Deuteranomaly

46.1392, 45.3032, 49.4926

Tritanomaly

46.2935, 45.3349, 51.6580

Monochromacy



Original Color

45.8163, 45.4246, 49.5331

Achromatopsia

43.9204, 46.2077, 50.3202

Achromatomaly

44.7103, 46.0155, 50.2415

CSS Examples

Text

The CSS property to change the color of the text to XYZ 45.8163, 45.4246, 49.5331 is called "color". The color property can be set on classes, ids or directly on the HTML element.

This example shows how text in the color `rgb(194, 175, 180)` looks like.

```
.text, #text, p{  
    color:rgb(194, 175, 180)  
}
```

If you want to add a text shadow in that color use the text-shadow property, you can generate a text shadow directly with our [CSS Text Shadow Generator](#).

Here you see how black text with a 4 pixel rgb(194, 175, 180) colored shadow looks like.

```
.shadow{ text-shadow: 4px 4px 2px rgb(194, 175, 180) }
```

Border

The CSS property to change the border of an element to XYZ 45.8163, 45.4246, 49.5331 is called "border". The border property can be set on classes, ids or directly on the HTML element.

This example shows the color as border, it can be applied via the CSS property "border" or "border-color".

```
.border, #border, table{ border:4px solid rgb(194, 175, 180) }
```


If only the border color should be changed use the property `border-color`.

```
.border{ border-color:rgb(194, 175, 180) }
```

If you want to add a box shadow in that color use:

Here you see how a box with a 4 pixel `rgb(194, 175, 180)` colored shadow looks like.

```
.boxshadow{ -moz-box-shadow:4px 4px 4px  
4px rgb(194, 175, 180); -webkit-box-  
shadow:4px 4px 4px 4px rgb(194, 175, 180);  
box-shadow:4px 4px 4px 4px rgb(194, 175,  
180) }
```

Background

The CSS property to change the background color of an element to XYZ 45.8163, 45.4246, 49.5331 is called "background". The background property can be set on classes, ids or directly on the HTML element.

```
.background, #background, body{  
background: rgb(194, 175, 180) }
```

If only the background color should be changed can be used:

```
.background{ background-color: rgb(194,  
175, 180) }
```

This example shows the color as background, it is applied via the CSS property "background".

To optimize and compress your CSS code, you can use our [online CSS compressor and optimizer](#) based on csstidy. If you want to create a linear or radial gradient as background or border, check our [CSS Gradient Generator](#).

Hey! You found this booklet interesting? Support Converting Colors with the new Membership Option!

The pro membership hides all ads, plus gives you double the colors in the color bucket, and more awesome pro features!

[Learn more, Memberships starting at \\$2.50/m!](#)

**Follow me
on Twitter!**

@ConvertingColor