

Converting Colors

XYZ(45.8328, 45.4909, 46.9224)

Have a look what the booklet for
XYZ(45.8328, 45.4909, 46.9224)
contains.

XYZ(45.8328, 45.4909, 46.9224)	3
<i>Conversions</i>	4
<i>Details</i>	6
<i>Harmonies</i>	12
<i>Previews</i>	24
<i>Color Blindness Simulation</i>	28
<i>CSS Examples</i>	31

Color

**XYZ(45.8328, 45.4909,
46.9224)**

Conversions

Conversions Part 1

Format	Color
Hex	C4AFAF
RGB	196, 175, 175
RGB Percent	77%, 69%, 69%
CMY	0.2314, 0.3137, 0.3137
CMYK	0.00, 0.11, 0.11, 0.23
HSL	0°, 15%, 73%
HSV	0°, 11%, 77%
XYZ	45.8328, 45.4909, 46.9224
YIQ	181.2790, 12.5160, 4.4520

Conversions

Conversions Part 2

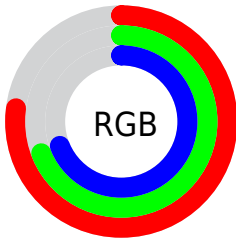
Format	Color
R_{YB}	196, 175, 175
Decimal	12890031
CIE Lab	73.21, 7.54, 2.75
CIE LCh	73, 8.030, 20.028
Yxy	45.4909, 0.3315, 0.3291
Android (android.graphics.Color)	4291080111 (0xFFC4AF AF)
YUV	181.2790, -3.0955, 12.9103
Hunter-Lab	67.4469, 3.2655, 5.9652

Details

The XYZ color **45.8328, 45.4909, 46.9224** is a light color, and the websafe version is hex **CCCCCC**. A complement of this color would be **47.3827, 52.5782, 59.8763**, and the grayscale version is **44.0845, 46.3803, 50.5082**.

A 20% lighter version of the original color is **83.3669, 83.7476, 86.6339**, and **21.8134, 21.3468, 21.7095** is the 20% darker color. If you saturate the color by 10%, you get **40.5047, 37.6947, 36.3283**, and if you desaturate by 10%, it is **51.9964, 54.5099, 59.1747**.

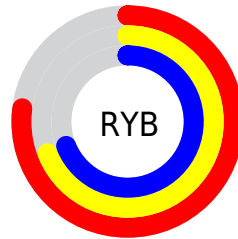
Distribution



Red (77%)

Green (69%)

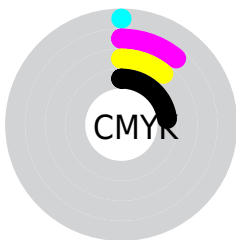
Blue (69%)



Red (77%)

Yellow (69%)

Blue (69%)

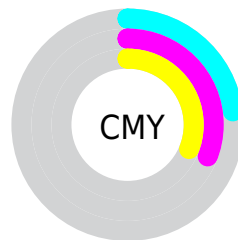


Cyan (0%)

Magenta (11%)

Yellow (11%)

Black (23%)



Cyan (23%)


Magenta (31%)


Yellow (31%)

Brightness & Saturation Gradients


These gradients show how the XYZ color 45.8328, 45.4909, 46.9224 changes by changing the brightness by 10 percent. The first figure shows a shift by +10% for each color and the second figure -10%.


Similar to the brightness gradients but the following saturation gradients show a change of the XYZ color 45.8328, 45.4909, 46.9224 by changing the saturation by 10% instead.


 45.8328, 45.4909,
46.9224

 45.8328, 45.4909,
46.9224

360.8633,
368.7581, 390.8895

 32.3180, 31.8443,
32.6204

 83.1981, 83.4566,
86.9465

 21.7612, 21.2426,
21.5671


107.7793,
108.5444, 113.5058

 13.7972, 13.3014,
13.3439


136.7800,
138.2147, 144.9878

 8.0605, 7.6364,
7.5323

170.5655,
172.8520, 181.8113

 4.1858, 3.8632,
3.7137

209.5012,
212.8406, 224.3946

 1.8078, 1.5973,
1.4696

253.9525,

 0.5224, 0.3558,

258.5649, 273.1564

0.1951

304.2848,
310.4092, 328.5152

■ 0.0000, 0.0000,
0.0000

■ 45.8328, 45.4909,
46.9224

■ 45.8328, 45.4909,
46.9224

■ 40.5047, 37.6947,
36.3283

■ 51.9964, 54.5099,
59.1747

■ 35.9726, 31.0631,
27.3183

■ 59.0253, 64.7947,
73.1489

■ 32.1994, 25.5419,
19.8173

■ 66.9524, 76.3939,
88.9092

■ 29.1438, 21.0705,
13.7429

■ 75.8079, 89.3514,
106.5153

■ 26.7601, 17.5825,
9.0047

■ 76.5752, 90.4759,
108.0354

■ 24.9979, 15.0037,
5.5020

■ 23.7994, 13.2498,
3.1200

■ 23.0961, 12.2204,
1.7224

■ 22.7655, 11.7366,
1.0655

Harmonies

Analogous

The Analogous color harmony consists of three colors that are next to each other on the color wheel.



45.9607, 45.4909, 50.8874



45.8328, 45.4909, 46.9224



45.0012, 45.4909, 43.8217

Triad

The Triadic color harmony groups three colors that are evenly spaced from another and form a triangle on the color wheel.



45.8328, 45.4909, 46.9224



41.1950, 45.4909, 44.7137



42.7704, 45.4909, 57.5715

Complementary

The Complementary color scheme is a pair of colors which are on the opposite of each other on the color wheel.



45.8328, 45.4909, 46.9224



47.3827, 52.5782, 59.8763

Split Complementary

Split-complementary colors differ from the complementary color scheme. The scheme consists of three colors, the original color and two neighbors of the complement color.



41.5209, 45.4909, 55.7177



45.8328, 45.4909, 46.9224



40.6245, 45.4909, 48.2006

Square

The Square scheme is like the rectangle color scheme, but the four colors are evenly spaced on the color wheel.



45.8328, 45.4909, 46.9224



42.3167, 45.4909, 42.5953



40.7425, 45.4909, 52.2363



44.1720, 45.4909, 57.1833

Rectangle

The Rectangle color scheme consists of four colors that form a rectangle on the color wheel.



45.8328, 45.4909, 46.9224



44.1695, 45.4909, 42.5930



40.7425, 45.4909, 52.2363



42.3192, 45.4909, 57.1861

Sweetspot

The Sweet Spot groups the original color and five complimentary colors.



45.8341, 45.4929, 46.9234



91.4509, 94.7336, 101.7446



48.0593, 46.3819, 58.6446



19.3736, 19.9833, 21.3786



0.0000, 0.0000, 0.0000



20.3446, 21.4041, 23.3091

Same Dimension

The Same Dimension uses a secret algorithm to generate beautiful new colors.



45.8341, 45.4929, 46.9234



80.4877, 78.6919, 79.9488



47.9571, 49.7390, 47.6310



10.0734, 10.0782, 10.4762



14.6278, 7.5414, 0.6847



0.6321, 0.3259, 0.0296

Inverse Universe

The Inverse Universe completely reimagines the original color for something new.



47.3827, 52.5782, 59.8763



83.8864, 94.2422, 108.3770



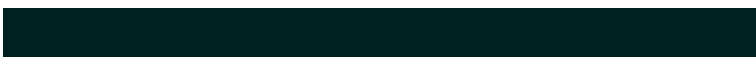
45.0973, 48.0076, 59.1145



10.3684, 11.4282, 12.9442



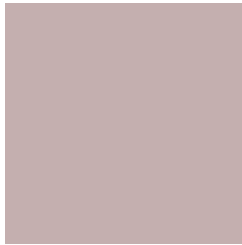
19.0811, 27.9187, 37.9398



0.8245, 1.2064, 1.6393

Previews

White Background



This preview shows how the XYZ color 45.8328, 45.4909, 46.9224 looks on a white background.

Color Contrast Check

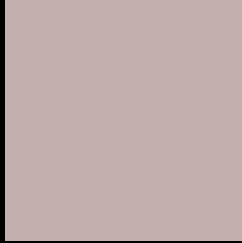
Large Text (above 18pt) WCAG AA × Fail

Any Text WCAG AA × Fail

Large Text (above 18pt) WCAG AAA × Fail

Any Text WCAG AAA × Fail

Black Background



This preview shows how the XYZ color 45.8328, 45.4909, 46.9224 looks on a black background.

Color Contrast Check

Large Text (above 18pt) WCAG AA ✓ Pass

Any Text WCAG AA ✓ Pass

Large Text (above 18pt) WCAG AAA ✓ Pass

Any Text WCAG AAA ✓ Pass

If you want to check with other color combinations, try the [Color Contrast Checker](#).

XYZ 45.8328, 45.4909, 46.9224

Background



This preview shows how black text looks on a background with the XYZ color 45.8328, 45.4909, 46.9224.



This preview shows how white text looks on a background with the XYZ color 45.8328, 45.4909,

Color Blindness Simulation

Color vision deficiency is a very complex topic, and I could not describe the different causes any better than Wikipedia does, so if you want to learn more, you should check out their [article about color blindness](#).

Dichromacy



Original Color

45.8328, 45.4909, 46.9224

Protanopia

43.8231, 45.6049, 48.0879

Deuteranopia

46.4271, 45.5094, 46.8947



Tritanopia

47.2019, 45.4808, 53.3046

Trichromacy



Original Color

45.8328, 45.4909, 46.9224

Protanomaly

44.4959, 45.6667, 47.5437

Deuteranomaly

46.1626, 45.3730, 46.8823

Tritanomaly

46.7093, 45.5613, 51.1321

Monochromacy



Original Color

45.8328, 45.4909, 46.9224

Achromatopsia

43.9204, 46.2077, 50.3202

Achromatomaly

44.5065, 45.9340, 49.1682

CSS Examples

Text

The CSS property to change the color of the text to XYZ 45.8328, 45.4909, 46.9224 is called "color". The color property can be set on classes, ids or directly on the HTML element.

This example shows how text in the color `rgb(196, 175, 175)` looks like.

```
.text, #text, p{  
    color:rgb(196, 175, 175)  
}
```

If you want to add a text shadow in that color use the text-shadow property, you can generate a text shadow directly with our [CSS Text Shadow Generator](#).

Here you see how black text with a 4 pixel rgb(196, 175, 175) colored shadow looks like.

```
.shadow{ text-shadow: 4px 4px 2px rgb(196, 175, 175) }
```

Border

The CSS property to change the border of an element to XYZ 45.8328, 45.4909, 46.9224 is called "border". The border property can be set on classes, ids or directly on the HTML element.

This example shows the color as border, it can be applied via the CSS property "border" or "border-color".

```
.border, #border, table{ border:4px solid rgb(196, 175, 175) }
```


If only the border color should be changed use the property `border-color`.

```
.border{ border-color:rgb(196, 175, 175) }
```

If you want to add a box shadow in that color use:

Here you see how a box with a 4 pixel `rgb(196, 175, 175)` colored shadow looks like.

```
.boxshadow{ -moz-box-shadow:4px 4px 4px  
4px rgb(196, 175, 175); -webkit-box-  
shadow:4px 4px 4px 4px rgb(196, 175, 175);  
box-shadow:4px 4px 4px 4px rgb(196, 175,  
175) }
```

Background

The CSS property to change the background color of an element to XYZ 45.8328, 45.4909, 46.9224 is called "background". The background property can be set on classes, ids or directly on the HTML element.

```
.background, #background, body{  
background: rgb(196, 175, 175) }
```

If only the background color should be changed can be used:

```
.background{ background-color: rgb(196,  
175, 175) }
```

This example shows the color as background, it is applied via the CSS property "background".

To optimize and compress your CSS code, you can use our [online CSS compressor and optimizer](#) based on csstidy. If you want to create a linear or radial gradient as background or border, check our [CSS Gradient Generator](#).

Hey! You found this booklet interesting? Support Converting Colors with the new Membership Option!

The pro membership hides all ads, plus gives you double the colors in the color bucket, and more awesome pro features!

[Learn more, Memberships starting at \\$2.50/m!](#)

**Follow me
on Twitter!**

@ConvertingColor