

# Converting Colors

XYZ(45.9325, 43.6590, 37.8728)

Have a look what the booklet for  
XYZ(45.9325, 43.6590, 37.8728)  
contains.

<b>XYZ(46.1009, 43.8495, 37.9323)</b> .....	3
<b><i>Conversions</i></b> .....	4
<b><i>Details</i></b> .....	6
<b><i>Harmonies</i></b> .....	12
<b><i>Previews</i></b> .....	24
<b><i>Color Blindness Simulation</i></b> .....	28
<b><i>CSS Examples</i></b> .....	31

# Color

**XYZ(46.1009, 43.8495,  
37.9323)**

# Conversions

## Conversions Part 1

<b>Format</b>	<b>Color</b>
Hex	D0A89D
RGB	208, 168, 157
RGB Percent	82%, 66%, 62%
CMY	0.1843, 0.3412, 0.3843
CMYK	0.00, 0.19, 0.25, 0.18
HSL	13°, 35%, 72%
HSV	13°, 25%, 82%
XYZ	46.1009, 43.8495, 37.9323
YIQ	178.7060, 27.3710, 5.0590

# Conversions

## Conversions Part 2

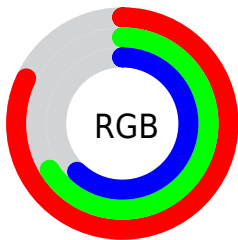
<b>Format</b>	<b>Color</b>
R <sub>Y</sub> B	208, 171, 157
Decimal	13674653
CIE Lab	72.13, 12.99, 11.22
CIE LCh	72, 17.162, 40.812
Yxy	43.8495, 0.3605, 0.3429
Android (android.graphics.Color)	4291864733 (0xFFD0A89D)
YUV	178.7060, -10.7011, 25.6908
Hunter-Lab	66.2190, 8.3865, 12.3901

# Details

The XYZ color **46.1009, 43.8495, 37.9323** is a light color, and the websafe version is hex **CC9999**. A complement of this color would be **45.2556, 51.6533, 67.2597**, and the grayscale version is **42.7372, 44.9628, 48.9645**.

A 20% lighter version of the original color is **79.5113, 78.7888, 73.3044**, and **21.9838, 20.3037, 16.3960** is the 20% darker color. If you saturate the color by 10%, you get **41.6493, 37.5502, 28.4204**, and if you desaturate by 10%, it is **51.2350, 51.0293, 49.1642**.

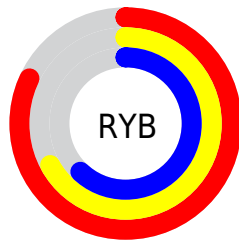
# Distribution



Red (82%)

Green (66%)

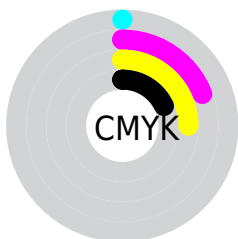
Blue (62%)



Red (82%)

Yellow (67%)

Blue (62%)

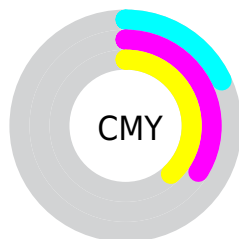


Cyan (0%)

Magenta (19%)

Yellow (25%)

Black (18%)



Cyan (18%)

Magenta (34%)


Yellow (38%)


# Brightness & Saturation Gradients

These gradients show how the XYZ color 46.1009, 43.8495, 37.9323 changes by changing the brightness by 10 percent. The first figure shows a shift by +10% for each color and the second figure -10%.


Similar to the brightness gradients but the following saturation gradients show a change of the XYZ color 46.1009, 43.8495, 37.9323 by changing the saturation by 10% instead.





 46.1009, 43.8495,  
37.9323


 46.1009, 43.8495,  
37.9323


361.9233,  
362.0938, 352.6189

 32.5304, 30.5522,  
25.6287

 83.5969, 80.9912,  
73.2066

 21.9245, 20.2581,  
16.3228


 108.2532,  
105.6045, 97.0145

 13.9177, 12.5828,  
9.5961


137.3354,  
134.7585, 125.4941

 8.1448, 7.1419,  
5.0299

171.2089,  
168.8376, 159.0642

 4.2403, 3.5510,  
2.2058

210.2391,  
208.2263, 198.1432

 1.8390, 1.4257,  
0.6777

254.7913,

 0.5410, 0.2356,

253.3090, 243.1496

0.0000

305.2309,  
304.4700, 294.5020

■ 0.0000, 0.0000,  
0.0000

■ 46.1009, 43.8495,  
37.9323

■ 46.1009, 43.8495,  
37.9323

■ 41.6493, 37.5502,  
28.4204

■ 51.2350, 51.0293,  
49.1642

■ 37.8475, 32.0915,  
20.5404

■ 57.0755, 59.1157,  
62.1928

■ 34.6651, 27.4390,  
14.2009

■ 63.6495, 68.1412,  
77.0931

■ 32.0680, 23.5539,  
9.2997

■ 70.9815, 78.1348,  
93.9355

■ 30.0186, 20.3938,  
5.7225

■ 78.1134, 88.7316,  
107.6176

■ 28.4745, 17.9123,  
3.3375

■ 79.8226, 92.1500,  
108.1874

■ 27.3862, 16.0567,  
1.9848

■ 26.9464, 15.2776,  
1.5286

# Harmonies

## Analogous

The Analogous color harmony consists of three colors that are next to each other on the color wheel.



47.4761, 43.8495, 44.7736



46.1009, 43.8495, 37.9323



43.5619, 43.8495, 34.0373

# Triad

The Triadic color harmony groups three colors that are evenly spaced from another and form a triangle on the color wheel.



46.1009, 43.8495, 37.9323



36.5669, 43.8495, 42.6224



42.7463, 43.8495, 65.4637

# Complementary

The Complementary color scheme is a pair of colors which are on the opposite of each other on the color wheel.



46.1009, 43.8495, 37.9323



45.2556, 51.6533, 67.2597

# Split Complementary

Split-complementary colors differ from the complementary color scheme. The scheme consists of three colors, the original color and two neighbors of the complement color.



39.8485, 43.8495, 64.7118



46.1009, 43.8495, 37.9323



36.3716, 43.8495, 50.8443

# Square

The Square scheme is like the rectangle color scheme, but the four colors are evenly spaced on the color wheel.



46.1009, 43.8495, 37.9323



38.0935, 43.8495, 36.5171



37.5468, 43.8495, 59.1181



45.4798, 43.8495, 61.0656



# Rectangle

The Rectangle color scheme consists of four colors that form a rectangle on the color wheel.



46.1009, 43.8495, 37.9323



41.5976, 43.8495, 33.3264



37.5468, 43.8495, 59.1181



41.7578, 43.8495, 65.8168

# Sweetspot

The Sweet Spot groups the original color and five complimentary colors.



46.1021, 43.8515, 37.9332



88.0037, 90.2946, 93.0260



48.2398, 41.5924, 58.7912



18.7122, 19.1551, 19.6333



0.0000, 0.0000, 0.0000



20.3446, 21.4041, 23.3091



# Same Dimension

The Same Dimension uses a secret algorithm to generate beautiful new colors.



46.1021, 43.8515, 37.9332



69.5532, 64.5334, 52.5333



51.1024, 53.8521, 39.6000



12.0126, 12.2158, 12.3368



16.8528, 9.6386, 0.9722



1.0020, 0.6584, 0.0743



# Inverse Universe

The Inverse Universe completely reimagines the original color for something new.



45.2556, 51.6533, 67.2597



67.9972, 78.8086, 106.2355



40.1000, 41.3421, 65.5412



11.9329, 12.9561, 15.1155



15.3453, 19.3372, 40.1162

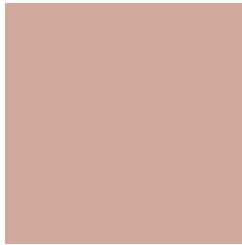


0.9132, 1.1916, 2.2614



# Previews

## White Background



This preview shows how the XYZ color 46.1009, 43.8495, 37.9323 looks on a white background.

## Color Contrast Check

Large Text (above 18pt) WCAG AA × Fail

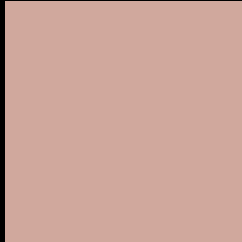
Any Text WCAG AA × Fail

Large Text (above 18pt) WCAG AAA × Fail

Any Text WCAG AAA × Fail



# Black Background



This preview shows how the XYZ color 46.1009, 43.8495, 37.9323 looks on a black background.

## Color Contrast Check

Large Text (above 18pt) WCAG AA ✓ Pass

Any Text WCAG AA ✓ Pass

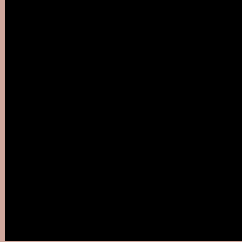
Large Text (above 18pt) WCAG AAA ✓ Pass

Any Text WCAG AAA ✓ Pass

If you want to check with other color combinations, try the [Color Contrast Checker](#).

**XYZ 46.1009, 43.8495, 37.9323**

## **Background**



This preview shows how black text looks on a background with the XYZ color 46.1009, 43.8495, 37.9323.



This preview shows how white text looks on a background with the XYZ color 46.1009, 43.8495,

37.9323.

# Color Blindness Simulation

Color vision deficiency is a very complex topic, and I could not describe the different causes any better than Wikipedia does, so if you want to learn more, you should check out their [article about color blindness](#).

## Dichromacy



### Original Color

46.1009, 43.8495, 37.9323

### Protanopia

41.7255, 43.8142, 39.9760

### Deuteranopia

45.0058, 44.1167, 38.0416



## Tritanopia

48.0694, 43.8263, 48.0453

# Trichromacy



## Original Color

46.1009, 43.8495, 37.9323

## Protanomaly

43.2811, 43.7627, 39.4236

## Deuteranomaly

45.3624, 44.0211, 38.0044

## Tritanomaly

47.1864, 43.7300, 43.9840

# Monochromacy



## Original Color

46.1009, 43.8495, 37.9323

## Achromatopsia

42.8472, 45.0786, 49.0906

## Achromatomaly

43.9159, 44.5474, 44.8120

# CSS Examples

## Text

The CSS property to change the color of the text to XYZ 46.1009, 43.8495, 37.9323 is called "color". The color property can be set on classes, ids or directly on the HTML element.

This example shows how text in the color `rgb(208, 168, 157)` looks like.

```
.text, #text, p{  
    color:rgb(208, 168, 157)  
}
```

If you want to add a text shadow in that color use the text-shadow property, you can generate a text shadow directly with our [CSS Text Shadow Generator](#).

Here you see how black text with a 4 pixel rgb(208, 168, 157) colored shadow looks like.

```
.shadow{ text-shadow: 4px 4px 2px rgb(208, 168, 157) }
```

## Border

The CSS property to change the border of an element to XYZ 46.1009, 43.8495, 37.9323 is called "border". The border property can be set on classes, ids or directly on the HTML element.

This example shows the color as border, it can be applied via the CSS property "border" or "border-color".

```
.border, #border, table{ border:4px solid rgb(208, 168, 157) }
```



If only the border color should be changed use the property border-color.

```
.border{ border-color:rgb(208, 168, 157) }
```

If you want to add a box shadow in that color use:

Here you see how a box with a 4 pixel rgb(208, 168, 157) colored shadow looks like.

```
.boxshadow{ -moz-box-shadow:4px 4px 4px  
4px rgb(208, 168, 157); -webkit-box-  
shadow:4px 4px 4px 4px rgb(208, 168, 157);  
box-shadow:4px 4px 4px 4px rgb(208, 168,  
157) }
```

# Background

The CSS property to change the background color of an element to XYZ 46.1009, 43.8495, 37.9323 is called "background". The background property can be set on classes, ids or directly on the HTML element.

```
.background, #background, body{  
background: rgb(208, 168, 157) }
```

If only the background color should be changed can be used:

```
.background{ background-color: rgb(208,  
168, 157) }
```

This example shows the color as background, it is applied via the CSS property "background".

To optimize and compress your CSS code, you can use our [online CSS compressor and optimizer](#) based on csstidy. If you want to create a linear or radial gradient as background or border, check our [CSS Gradient Generator](#).

Hey! You found this booklet interesting? Support Converting Colors with the new Membership Option!

The pro membership hides all ads, plus gives you double the colors in the color bucket, and more awesome pro features!

**[Learn more, Memberships starting at \\$2.50/m!](#)**

**Follow me  
on Twitter!**

@ConvertingColor