

Converting Colors

XYZ(46.0082, 43.4105, 37.0158)

Have a look what the booklet for
XYZ(46.0082, 43.4105, 37.0158)
contains.

XYZ(46.0296, 43.5593, 36.9921)	3
<i>Conversions</i>	4
<i>Details</i>	6
<i>Harmonies</i>	12
<i>Previews</i>	24
<i>Color Blindness Simulation</i>	28
<i>CSS Examples</i>	31

Color

**XYZ(46.0296, 43.5593,
36.9921)**

Conversions

Conversions Part 1

Format	Color
Hex	D1A79B
RGB	209, 167, 155
RGB Percent	82%, 65%, 61%
CMY	0.1804, 0.3451, 0.3922
CMYK	0.00, 0.20, 0.26, 0.18
HSL	13°, 37%, 71%
HSV	13°, 26%, 82%
XYZ	46.0296, 43.5593, 36.9921
YIQ	178.1900, 28.8840, 5.1720

Conversions

Conversions Part 2

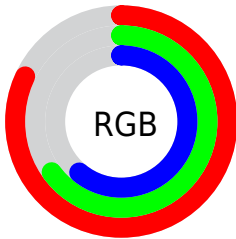
Format	Color
R _Y B	209, 170, 155
Decimal	13739931
CIE Lab	71.93, 13.63, 12.05
CIE LCh	72, 18.192, 41.495
Yxy	43.5593, 0.3636, 0.3441
Android (android.graphics.Color)	4291930011 (0xFFD1A79B)
YUV	178.1900, -11.4327, 27.0204
Hunter-Lab	65.9995, 8.9911, 12.9681

Details

The XYZ color **46.0296, 43.5593, 36.9921** is a light color, and the websafe version is hex **CC9999**. A complement of this color would be **44.9919, 51.5030, 67.8916**, and the grayscale version is **42.4664, 44.6779, 48.6543**.

A 20% lighter version of the original color is **78.8699, 78.1060, 71.2407**, and **21.9559, 20.1310, 15.8252** is the 20% darker color. If you saturate the color by 10%, you get **41.6313, 37.3327, 27.6030**, and if you desaturate by 10%, it is **51.1083, 50.6600, 48.1078**.

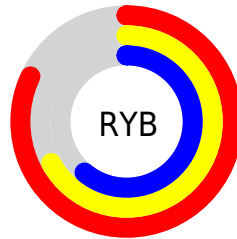
Distribution



Red (82%)

Green (65%)

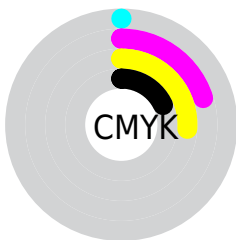
Blue (61%)



Red (82%)

Yellow (67%)

Blue (61%)

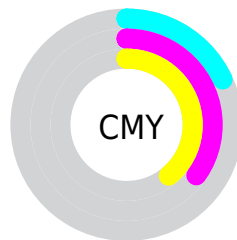


Cyan (0%)

Magenta (20%)

Yellow (26%)

Black (18%)



Cyan (18%)


Magenta (35%)


Yellow (39%)

Brightness & Saturation Gradients


These gradients show how the XYZ color 46.0296, 43.5593, 36.9921 changes by changing the brightness by 10 percent. The first figure shows a shift by +10% for each color and the second figure -10%.


Similar to the brightness gradients but the following saturation gradients show a change of the XYZ color 46.0296, 43.5593, 36.9921 by changing the saturation by 10% instead.


 46.0296, 43.5593,
36.9921

 46.0296, 43.5593,
36.9921


361.6416,
360.9069, 348.4440

 32.4739, 30.3242,
24.9056


 83.4909, 80.5542,
71.7468

 21.8810, 20.0848,
15.7884


 108.1272,
105.0828, 95.2522

 13.8856, 12.4567,
9.2218


137.1877,
134.1446, 123.4009

 8.1223, 7.0555,
4.7874

171.0379,
168.1241, 156.6115

 4.2258, 3.4968,
2.0665

210.0430,
207.4057, 195.3026

 1.8306, 1.3963,
0.5957

254.5684,

 0.5360, 0.2140,

252.3738, 239.8927

0.0000

304.9795,
303.4127, 290.8003

■ 0.0000, 0.0000,
0.0000

■ 46.0296, 43.5593,
36.9921

■ 46.0296, 43.5593,
36.9921

■ 41.6313, 37.3327,
27.6030

■ 51.1083, 50.6600,
48.1078

■ 37.8806, 31.9401,
19.8508

■ 56.8916, 58.6609,
61.0282

■ 34.7467, 27.3476,
13.6416

■ 63.4067, 67.5942,
75.8301

■ 32.1952, 23.5161,
8.8712

■ 70.6783, 77.4889,
92.5847

■ 30.1879, 20.4034,
5.4218

■ 77.9966, 88.0794,
107.4979

■ 28.6817, 17.9628,
3.1572

■ 80.1046, 92.2954,
108.2006

■ 27.6258, 16.1414,
1.9094

■ 27.2897, 15.5455,
1.5623

Harmonies

Analogous

The Analogous color harmony consists of three colors that are next to each other on the color wheel.



47.5229, 43.5593, 44.1070



46.0296, 43.5593, 36.9921



43.3229, 43.5593, 33.0104

Triad

The Triadic color harmony groups three colors that are evenly spaced from another and form a triangle on the color wheel.



46.0296, 43.5593, 36.9921



36.0019, 43.5593, 42.2134



42.6012, 43.5593, 66.2043

Complementary

The Complementary color scheme is a pair of colors which are on the opposite of each other on the color wheel.



46.0296, 43.5593, 36.9921



44.9919, 51.5030, 67.8916

Split Complementary

Split-complementary colors differ from the complementary color scheme. The scheme consists of three colors, the original color and two neighbors of the complement color.



39.5383, 43.5593, 65.5316



46.0296, 43.5593, 36.9921



35.8303, 43.5593, 50.9130

Square

The Square scheme is like the rectangle color scheme, but the four colors are evenly spaced on the color wheel.



46.0296, 43.5593, 36.9921



37.5762, 43.5593, 35.7552



37.0951, 43.5593, 59.6639



45.4786, 43.5593, 61.4009

Rectangle

The Rectangle color scheme consists of four colors that form a rectangle on the color wheel.



46.0296, 43.5593, 36.9921



41.2465, 43.5593, 32.3264



37.0951, 43.5593, 59.6639



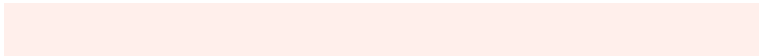
41.5575, 43.5593, 66.6256

Sweetspot

The Sweet Spot groups the original color and five complimentary colors.



46.0308, 43.5613, 36.9930



87.0837, 89.0471, 90.8926



48.1287, 41.0435, 58.3896



18.3368, 18.6417, 18.7761



0.0000, 0.0000, 0.0000



20.3446, 21.4041, 23.3091

Same Dimension

The Same Dimension uses a secret algorithm to generate beautiful new colors.



46.0308, 43.5613, 36.9930



68.2573, 62.7641, 49.5655



51.4363, 54.3724, 38.7948



12.0188, 12.2284, 12.3389



16.8869, 9.7068, 0.9836



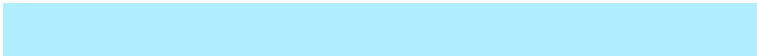
1.0049, 0.6642, 0.0752

Inverse Universe

The Inverse Universe completely reimagines the original color for something new.



44.9919, 51.5030, 67.8916



66.3512, 77.2603, 106.0234



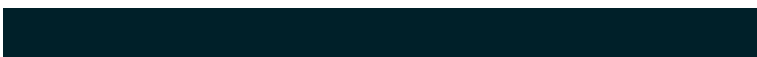
39.4577, 40.4346, 66.0468



11.9262, 12.9426, 15.1133



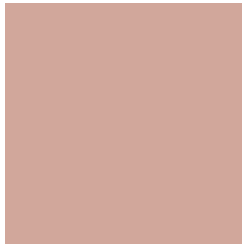
15.1970, 19.0406, 40.0667



0.9060, 1.1773, 2.2590

Previews

White Background



This preview shows how the XYZ color 46.0296, 43.5593, 36.9921 looks on a white background.

Color Contrast Check

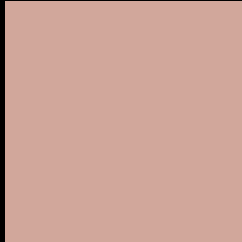
Large Text (above 18pt) WCAG AA × Fail

Any Text WCAG AA × Fail

Large Text (above 18pt) WCAG AAA × Fail

Any Text WCAG AAA × Fail

Black Background



This preview shows how the XYZ color 46.0296, 43.5593, 36.9921 looks on a black background.

Color Contrast Check

Large Text (above 18pt) WCAG AA ✓ Pass

Any Text WCAG AA ✓ Pass

Large Text (above 18pt) WCAG AAA ✓ Pass

Any Text WCAG AAA ✓ Pass

If you want to check with other color combinations, try the [Color Contrast Checker](#).

XYZ 46.0296, 43.5593, 36.9921

Background



This preview shows how black text looks on a background with the XYZ color 46.0296, 43.5593, 36.9921.



This preview shows how white text looks on a background with the XYZ color 46.0296, 43.5593,

Color Blindness Simulation

Color vision deficiency is a very complex topic, and I could not describe the different causes any better than Wikipedia does, so if you want to learn more, you should check out their [article about color blindness](#).

Dichromacy



Original Color

46.0296, 43.5593, 36.9921

Protanopia

41.6377, 43.7791, 39.5134

Deuteranopia

44.5646, 43.6391, 36.6462



Tritanopia

47.9759, 43.5344, 46.9487

Trichromacy



Original Color

46.0296, 43.5593, 36.9921

Protanomaly

43.1074, 43.6932, 38.5094

Deuteranomaly

45.1975, 43.6882, 36.6223

Tritanomaly

47.1014, 43.4391, 42.9479

Monochromacy



Original Color

46.0296, 43.5593, 36.9921

Achromatopsia

42.3164, 44.5201, 48.4824

Achromatomaly

43.3780, 43.9932, 44.2355

CSS Examples

Text

The CSS property to change the color of the text to XYZ 46.0296, 43.5593, 36.9921 is called "color". The color property can be set on classes, ids or directly on the HTML element.

This example shows how text in the color `rgb(209, 167, 155)` looks like.

```
.text, #text, p{  
    color:rgb(209, 167, 155)  
}
```

If you want to add a text shadow in that color use the text-shadow property, you can generate a text shadow directly with our [CSS Text Shadow Generator](#).

Here you see how black text with a 4 pixel rgb(209, 167, 155) colored shadow looks like.

```
.shadow{ text-shadow: 4px 4px 2px rgb(209, 167, 155) }
```

Border

The CSS property to change the border of an element to XYZ 46.0296, 43.5593, 36.9921 is called "border". The border property can be set on classes, ids or directly on the HTML element.

This example shows the color as border, it can be applied via the CSS property "border" or "border-color".

```
.border, #border, table{ border:4px solid rgb(209, 167, 155) }
```


If only the border color should be changed use the property border-color.

```
.border{ border-color:rgb(209, 167, 155) }
```

If you want to add a box shadow in that color use:

Here you see how a box with a 4 pixel rgb(209, 167, 155) colored shadow looks like.

```
.boxshadow{ -moz-box-shadow:4px 4px 4px  
4px rgb(209, 167, 155); -webkit-box-  
shadow:4px 4px 4px 4px rgb(209, 167, 155);  
box-shadow:4px 4px 4px 4px rgb(209, 167,  
155) }
```

Background

The CSS property to change the background color of an element to XYZ 46.0296, 43.5593, 36.9921 is called "background". The background property can be set on classes, ids or directly on the HTML element.

```
.background, #background, body{  
background: rgb(209, 167, 155) }
```

If only the background color should be changed can be used:

```
.background{ background-color: rgb(209,  
167, 155) }
```

This example shows the color as background, it is applied via the CSS property "background".

To optimize and compress your CSS code, you can use our [online CSS compressor and optimizer](#) based on csstidy. If you want to create a linear or radial gradient as background or border, check our [CSS Gradient Generator](#).

Hey! You found this booklet interesting? Support Converting Colors with the new Membership Option!

The pro membership hides all ads, plus gives you double the colors in the color bucket, and more awesome pro features!

[Learn more, Memberships starting at \\$2.50/m!](#)

**Follow me
on Twitter!**

@ConvertingColor