

Converting Colors

XYZ(46.0220, 46.5515, 51.0376)

Have a look what the booklet for
XYZ(46.0220, 46.5515, 51.0376)
contains.

XYZ(46.0495, 46.6940, 50.8417)	3
<i>Conversions</i>	4
<i>Details</i>	6
<i>Harmonies</i>	12
<i>Previews</i>	24
<i>Color Blindness Simulation</i>	28
<i>CSS Examples</i>	31

Color

**XYZ(46.0495, 46.6940,
50.8417)**

Conversions

Conversions Part 1

Format	Color
Hex	BFB3B6
RGB	191, 179, 182
RGB Percent	75%, 70%, 71%
CMY	0.2510, 0.2980, 0.2863
CMYK	0.00, 0.06, 0.05, 0.25
HSL	345°, 9%, 73%
HSV	345°, 6%, 75%
XYZ	46.0495, 46.6940, 50.8417
YIQ	182.9300, 6.1890, 3.4770

Conversions

Conversions Part 2

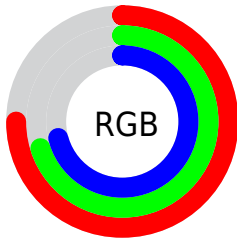
Format	Color
R_{YB}	191, 179, 182
Decimal	12563382
CIE _{Lab}	73.99, 4.80, 0.00
CIE _{LCh}	74, 4.801, 0.002
Yxy	46.6940, 0.3207, 0.3252
Android (android.graphics.Color)	4290753462 (0xFFBFB3B6)
YUV	182.9300, -0.4585, 7.0774
Hunter-Lab	68.3330, 0.7081, 3.7197

Details

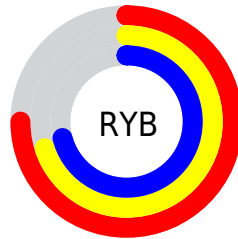
The XYZ color **46.0495, 46.6940, 50.8417** is a light color, and the websafe version is hex **CCCCCC**. A complement of this color would be **46.3002, 50.4775, 54.8825**, and the grayscale version is **44.9726, 47.3147, 51.5257**.

A 20% lighter version of the original color is **83.4987, 85.3639, 92.9649**, and **21.9045, 21.9100, 23.8434** is the 20% darker color. If you saturate the color by 10%, you get **41.0778, 39.0000, 42.2485**, and if you desaturate by 10%, it is **51.7057, 55.5132, 60.4119**.

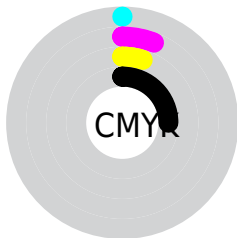
Distribution



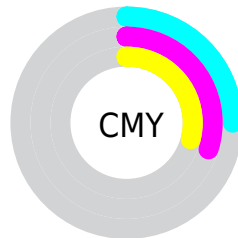
- Red (75%)
- Green (70%)
- Blue (71%)



- Red (75%)
- Yellow (70%)
- Blue (71%)



- Cyan (0%)
- Magenta (6%)
- Yellow (5%)
- Black (25%)



- Cyan (25%)
- Magenta (30%)
- Yellow (29%)

Brightness & Saturation Gradients

These gradients show how the XYZ color 46.0495, 46.6940, 50.8417 changes by changing the brightness by 10 percent. The first figure shows a shift by +10% for each color and the second figure -10%.

Similar to the brightness gradients but the following saturation gradients show a change of the XYZ color 46.0495, 46.6940, 50.8417 by changing the saturation by 10% instead.

■ 46.0495, 46.6940,
50.8417

■ 46.0495, 46.6940,
50.8417

361.7202,
373.5918, 406.7774

■ 32.4897, 32.7938,
35.7068

■ 83.5205, 85.2567,
92.8298

■ 21.8931, 21.9685,
23.9199

108.1624,
110.6880, 120.5202

■ 13.8946, 13.8338,
15.0626

137.2289,
140.7317, 153.2327

■ 8.1286, 8.0052,
8.7162

171.0856,
175.7724, 191.3860

■ 4.2298, 4.0982,
4.4623

210.0977,
216.1943, 235.3985

■ 1.8330, 1.7287,
1.8822

254.6306,

■ 0.5374, 0.4421,

262.3820, 285.6889

0.4814

305.0497,
314.7196, 342.6757

■ 0.0000, 0.0000,
0.0000

■ 46.0495, 46.6940,
50.8417

■ 46.0495, 46.6940,
50.8417

■ 41.0778, 39.0000,
42.2485

■ 51.7057, 55.5132,
60.4119

■ 36.7604, 32.3799,
34.5981

■ 58.0671, 65.4940,
70.9857

■ 33.0706, 26.7875,
27.8588

■ 65.1586, 76.6789,
82.5925

■ 29.9787, 22.1711,
21.9958

■ 72.8732, 88.8473,
95.2164

■ 27.4520, 18.4740,
16.9723

■ 75.0791, 89.7297,
106.8326

■ 25.4549, 15.6340,
12.7486

■ 75.2962, 89.8165,
107.9755

■ 23.9477, 13.5811,
9.2815

■ 22.8843, 12.2340,
6.5234

■ 22.2068, 11.4881,
4.4198

Harmonies

Analogous

The Analogous color harmony consists of three colors that are next to each other on the color wheel.



45.8236, 46.6940, 53.2380



46.0495, 46.6940, 50.8417



45.8236, 46.6940, 48.5185

Triad

The Triadic color harmony groups three colors that are evenly spaced from another and form a triangle on the color wheel.



46.0495, 46.6940, 50.8417



43.5624, 46.6940, 46.8635



43.5625, 46.6940, 55.0392

Complementary

The Complementary color scheme is a pair of colors which are on the opposite of each other on the color wheel.



46.0495, 46.6940, 50.8417



46.3002, 50.4775, 54.8825

Split Complementary

Split-complementary colors differ from the complementary color scheme. The scheme consists of three colors, the original color and two neighbors of the complement color.



42.9695, 46.6940, 53.2382



46.0495, 46.6940, 50.8417



42.9694, 46.6940, 48.5187

Square

The Square scheme is like the rectangle color scheme, but the four colors are evenly spaced on the color wheel.



46.0495, 46.6940, 50.8417



44.3812, 46.6940, 46.2672



42.7538, 46.6940, 50.8420



44.3813, 46.6940, 55.7085

Rectangle

The Rectangle color scheme consists of four colors that form a rectangle on the color wheel.



46.0495, 46.6940, 50.8417



45.4488, 46.6940, 47.3117



42.7538, 46.6940, 50.8420



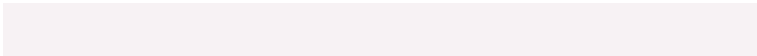
43.3305, 46.6940, 54.5433

Sweetspot

The Sweet Spot groups the original color and five complimentary colors.



46.0508, 46.6960, 50.8427



86.6278, 90.0920, 98.1243



46.2647, 46.6953, 55.8656



19.0451, 19.8182, 21.5851



92.9021, 97.7402, 106.4391



19.4759, 20.4902, 22.3138

Same Dimension

The Same Dimension uses a secret algorithm to generate beautiful new colors.



46.0508, 46.6960, 50.8427



80.7417, 80.9389, 88.0876



46.3520, 47.7888, 49.4314



9.6253, 9.5744, 10.4159



14.4946, 7.4290, 2.6324



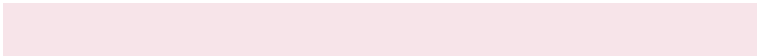
0.5950, 0.3019, 0.2464

Inverse Universe

The Inverse Universe completely reimagines the original color for something new.



46.0508, 46.6960, 50.8427



80.7417, 80.9389, 88.0876



45.9793, 49.3132, 56.3860



9.6253, 9.5744, 10.4159



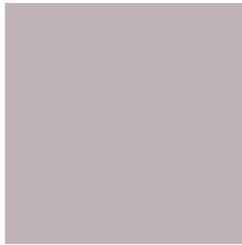
14.4946, 7.4290, 2.6324



0.5950, 0.3019, 0.2464

Previews

White Background



This preview shows how the XYZ color 46.0495, 46.6940, 50.8417 looks on a white background.

Color Contrast Check

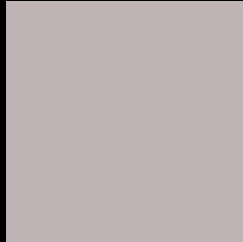
Large Text (above 18pt) WCAG AA × Fail

Any Text WCAG AA × Fail

Large Text (above 18pt) WCAG AAA × Fail

Any Text WCAG AAA × Fail

Black Background



This preview shows how the XYZ color 46.0495, 46.6940, 50.8417 looks on a black background.

Color Contrast Check

Large Text (above 18pt) WCAG AA ✓ Pass

Any Text WCAG AA ✓ Pass

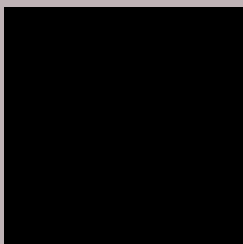
Large Text (above 18pt) WCAG AAA ✓ Pass

Any Text WCAG AAA ✓ Pass

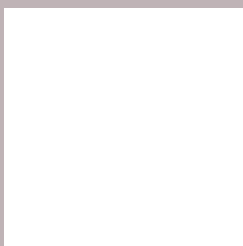
If you want to check with other color combinations, try the [Color Contrast Checker](#).

XYZ 46.0495, 46.6940, 50.8417

Background



This preview shows how black text looks on a background with the XYZ color 46.0495, 46.6940, 50.8417.



This preview shows how white text looks on a background with the XYZ color 46.0495, 46.6940,

Color Blindness Simulation

Color vision deficiency is a very complex topic, and I could not describe the different causes any better than Wikipedia does, so if you want to learn more, you should check out their [article about color blindness](#).

Dichromacy



Original Color

46.0495, 46.6940, 50.8417

Protanopia

45.0787, 46.7809, 51.4535

Deuteranopia

47.6258, 46.6117, 51.2866



Tritanopia

47.0626, 46.8088, 55.8448

Trichromacy



Original Color

46.0495, 46.6940, 50.8417

Protanomaly

45.3620, 46.6262, 51.4087

Deuteranomaly

47.0343, 46.5989, 51.3153

Tritanomaly

46.7357, 46.6781, 54.1235

Monochromacy



Original Color

46.0495, 46.6940, 50.8417

Achromatopsia

45.0092, 47.3531, 51.5676

Achromatomaly

45.5249, 47.3139, 51.5328

CSS Examples

Text

The CSS property to change the color of the text to XYZ 46.0495, 46.6940, 50.8417 is called "color". The color property can be set on classes, ids or directly on the HTML element.

This example shows how text in the color `rgb(191, 179, 182)` looks like.

```
.text, #text, p{  
    color:rgb(191, 179, 182)  
}
```

If you want to add a text shadow in that color use the text-shadow property, you can generate a text shadow directly with our [CSS Text Shadow Generator](#).

Here you see how black text with a 4 pixel rgb(191, 179, 182) colored shadow looks like.

```
.shadow{ text-shadow: 4px 4px 2px rgb(191, 179, 182) }
```

Border

The CSS property to change the border of an element to XYZ 46.0495, 46.6940, 50.8417 is called "border". The border property can be set on classes, ids or directly on the HTML element.

This example shows the color as border, it can be applied via the CSS property "border" or "border-color".

```
.border, #border, table{ border:4px solid rgb(191, 179, 182) }
```


If only the border color should be changed use the property `border-color`.

```
.border{ border-color:rgb(191, 179, 182) }
```

If you want to add a box shadow in that color use:

Here you see how a box with a 4 pixel `rgb(191, 179, 182)` colored shadow looks like.

```
.boxshadow{ -moz-box-shadow:4px 4px 4px  
4px rgb(191, 179, 182); -webkit-box-  
shadow:4px 4px 4px 4px rgb(191, 179, 182);  
box-shadow:4px 4px 4px 4px rgb(191, 179,  
182) }
```

Background

The CSS property to change the background color of an element to XYZ 46.0495, 46.6940, 50.8417 is called "background". The background property can be set on classes, ids or directly on the HTML element.

```
.background, #background, body{  
background: rgb(191, 179, 182) }
```

If only the background color should be changed can be used:

```
.background{ background-color: rgb(191,  
179, 182) }
```

This example shows the color as background, it is applied via the CSS property "background".

To optimize and compress your CSS code, you can use our [online CSS compressor and optimizer](#) based on csstidy. If you want to create a linear or radial gradient as background or border, check our [CSS Gradient Generator](#).

Hey! You found this booklet interesting? Support Converting Colors with the new Membership Option!

The pro membership hides all ads, plus gives you double the colors in the color bucket, and more awesome pro features!

[Learn more, Memberships starting at \\$2.50/m!](#)

**Follow me
on Twitter!**

@ConvertingColor