

Converting Colors

XYZ(46.0800, 42.6663, 41.2688)

Have a look what the booklet for
XYZ(46.0800, 42.6663, 41.2688)
contains.

XYZ(46.0794, 42.6774, 41.4062)	3
<i>Conversions</i>	4
<i>Details</i>	6
<i>Harmonies</i>	12
<i>Previews</i>	24
<i>Color Blindness Simulation</i>	28
<i>CSS Examples</i>	31

Color

**XYZ(46.0794, 42.6774,
41.4062)**

Conversions

Conversions Part 1

Format	Color
Hex	D0A4A5
RGB	208, 164, 165
RGB Percent	82%, 64%, 65%
CMY	0.1843, 0.3568, 0.3529
CMYK	0.00, 0.21, 0.21, 0.18
HSL	359°, 32%, 73%
HSV	359°, 21%, 82%
XYZ	46.0794, 42.6774, 41.4062
YIQ	177.2700, 25.9030, 9.6390

Conversions

Conversions Part 2

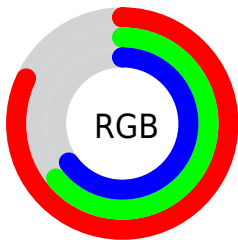
Format	Color
R _Y B	208, 164, 165
Decimal	13673637
CIE Lab	71.34, 16.34, 5.68
CIE LCh	71, 17.302, 19.163
Yxy	42.6774, 0.3540, 0.3279
Android (android.graphics.Color)	4291863717 (0xFFD0A4A5)
YUV	177.2700, -6.0491, 26.9502
Hunter-Lab	65.3279, 11.5820, 8.1503

Details

The XYZ color **46.0794, 42.6774, 41.4062** is a light color, and the websafe version is hex **CC9999**. A complement of this color would be **49.1299, 57.5103, 67.5455**, and the grayscale version is **41.9541, 44.1390, 48.0673**.

A 20% lighter version of the original color is **79.4898, 77.0903, 78.4005**, and **21.9117, 19.5529, 18.2420** is the 20% darker color. If you saturate the color by 10%, you get **40.9514, 35.1507, 31.2821**, and if you desaturate by 10%, it is **52.1127, 51.5432, 53.2841**.

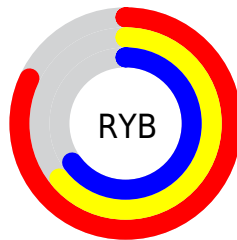
Distribution



Red (82%)

Green (64%)

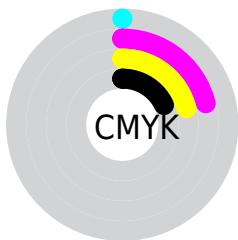
Blue (65%)



Red (82%)

Yellow (64%)

Blue (65%)

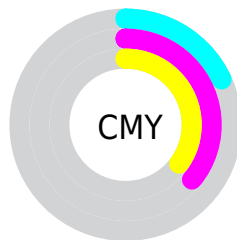


Cyan (0%)

Magenta (21%)

Yellow (21%)

Black (18%)



Cyan (18%)


Magenta (36%)


Yellow (35%)

Brightness & Saturation Gradients

These gradients show how the XYZ color 46.0794, 42.6774, 41.4062 changes by changing the brightness by 10 percent. The first figure shows a shift by +10% for each color and the second figure -10%.


Similar to the brightness gradients but the following saturation gradients show a change of the XYZ color 46.0794, 42.6774, 41.4062 by changing the saturation by 10% instead.


 46.0794, 42.6774,
41.4062

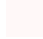
 46.0794, 42.6774,
41.4062


361.8384,
357.2834, 367.7423

 32.5134, 29.6321,
28.3145


 83.5650, 79.2238,
78.5605

 21.9114, 19.5595,
18.3218


 108.2152,
103.4937, 103.4602

 13.9080, 12.0752,
11.0094

137.2909,
132.2739, 133.1330

 8.1380, 6.7949,
5.9589

171.1573,
165.9488, 167.9974

 4.2359, 3.3342,
2.7517

210.1800,
204.9028, 208.4720

 1.8365, 1.3086,
0.9693

254.7241,

 0.5395, 0.1478,

249.5203, 254.9753

0.0000

305.1551,
300.1857, 307.9259

■ 0.0000, 0.0000,
0.0000

■ 46.0794, 42.6774,
41.4062

■ 46.0794, 42.6774,
41.4062

■ 40.9514, 35.1507,
31.2821

■ 52.1127, 51.5432,
53.2841

■ 36.6818, 28.8926,
22.8262

■ 59.0882, 61.8024,
66.9906

■ 33.2246, 23.8350,
15.9499

■ 67.0451, 73.5137,
82.5991

■ 30.5284, 19.9010,
10.5551

■ 76.0195, 86.7305,
100.1786

■ 28.5359, 17.0051,
6.5332

■ 79.8226, 92.1500,
108.1874

■ 27.1814, 15.0491,
3.7602

■ 26.3871, 13.9165,
2.0902

■ 26.0384, 13.4203,
1.3532

Harmonies

Analogous

The Analogous color harmony consists of three colors that are next to each other on the color wheel.



46.3086, 42.6774, 49.5456



46.0794, 42.6774, 41.4062



44.3320, 42.6774, 35.3726

Triad

The Triadic color harmony groups three colors that are evenly spaced from another and form a triangle on the color wheel.



46.0794, 42.6774, 41.4062



36.4775, 42.6774, 36.7614



39.5211, 42.6774, 64.0431

Complementary

The Complementary color scheme is a pair of colors which are on the opposite of each other on the color wheel.



46.0794, 42.6774, 41.4062



49.1299, 57.5103, 67.5455

Split Complementary

Split-complementary colors differ from the complementary color scheme. The scheme consists of three colors, the original color and two neighbors of the complement color.



37.0151, 42.6774, 59.6713



46.0794, 42.6774, 41.4062



35.3145, 42.6774, 43.5214

Square

The Square scheme is like the rectangle color scheme, but the four colors are evenly spaced on the color wheel.



46.0794, 42.6774, 41.4062



38.7552, 42.6774, 32.9207



35.5065, 42.6774, 51.9273



42.4274, 42.6774, 63.3005

Rectangle

The Rectangle color scheme consists of four colors that form a rectangle on the color wheel.



46.0794, 42.6774, 41.4062



42.5858, 42.6774, 33.0481



35.5065, 42.6774, 51.9273



38.6064, 42.6774, 63.1041

Sweetspot

The Sweet Spot groups the original color and five complimentary colors.



46.0806, 42.6794, 41.4071



88.0469, 89.6977, 95.1470



50.2637, 44.3052, 65.5774



18.6898, 18.9698, 20.0591



0.0000, 0.0000, 0.0000



20.3446, 21.4041, 23.3091

Same Dimension

The Same Dimension uses a secret algorithm to generate beautiful new colors.



46.0806, 42.6794, 41.4071



69.5168, 62.4673, 58.6664



49.9660, 50.5947, 42.2566



11.8194, 11.8125, 12.3250



16.2333, 8.3661, 0.8687



0.9116, 0.4693, 0.0691

Inverse Universe

The Inverse Universe completely reimagines the original color for something new.



46.0806, 42.6794, 41.4071



69.5168, 62.4673, 58.6664



44.5662, 48.1872, 66.6270



11.8194, 11.8125, 12.3250



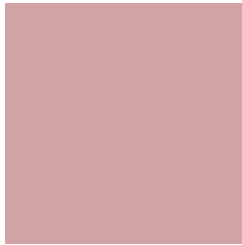
16.2333, 8.3661, 0.8687



0.9116, 0.4693, 0.0691

Previews

White Background



This preview shows how the XYZ color 46.0794, 42.6774, 41.4062 looks on a white background.

Color Contrast Check

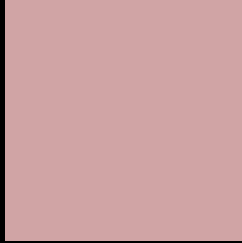
Large Text (above 18pt) WCAG AA × Fail

Any Text WCAG AA × Fail

Large Text (above 18pt) WCAG AAA × Fail

Any Text WCAG AAA × Fail

Black Background



This preview shows how the XYZ color 46.0794, 42.6774, 41.4062 looks on a black background.

Color Contrast Check

Large Text (above 18pt) WCAG AA ✓ Pass

Any Text WCAG AA ✓ Pass

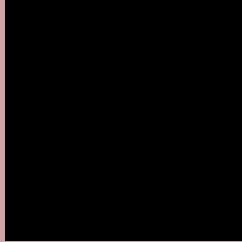
Large Text (above 18pt) WCAG AAA ✓ Pass

Any Text WCAG AAA ✓ Pass

If you want to check with other color combinations, try the [Color Contrast Checker](#).

XYZ 46.0794, 42.6774, 41.4062

Background



This preview shows how black text looks on a background with the XYZ color 46.0794, 42.6774, 41.4062.



This preview shows how white text looks on a background with the XYZ color 46.0794, 42.6774,

41.4062.

Color Blindness Simulation

Color vision deficiency is a very complex topic, and I could not describe the different causes any better than Wikipedia does, so if you want to learn more, you should check out their [article about color blindness](#).

Dichromacy



Original Color

46.0794, 42.6774, 41.4062

Protanopia

41.0771, 42.7961, 44.6235

Deuteranopia

43.6538, 42.7920, 41.0808



Tritanopia

46.9527, 42.4911, 46.2844

Trichromacy



Original Color

46.0794, 42.6774, 41.4062

Protanomaly

42.7714, 42.5612, 43.4970

Deuteranomaly

44.3390, 42.5971, 41.0071

Tritanomaly

46.7424, 42.6900, 44.3045

Monochromacy



Original Color

46.0794, 42.6774, 41.4062

Achromatopsia

41.7894, 43.9657, 47.8787

Achromatomaly

43.0344, 43.2135, 45.6081

CSS Examples

Text

The CSS property to change the color of the text to XYZ 46.0794, 42.6774, 41.4062 is called "color". The color property can be set on classes, ids or directly on the HTML element.

This example shows how text in the color rgb(208, 164, 165) looks like.

```
.text, #text, p{  
    color:rgb(208, 164, 165)  
}
```

If you want to add a text shadow in that color use the text-shadow property, you can generate a text shadow directly with our [CSS Text Shadow Generator](#).

Here you see how black text with a 4 pixel rgb(208, 164, 165) colored shadow looks like.

```
.shadow{ text-shadow: 4px 4px 2px rgb(208, 164, 165) }
```

Border

The CSS property to change the border of an element to XYZ 46.0794, 42.6774, 41.4062 is called "border". The border property can be set on classes, ids or directly on the HTML element.

This example shows the color as border, it can be applied via the CSS property "border" or "border-color".

```
.border, #border, table{ border:4px solid rgb(208, 164, 165) }
```


If only the border color should be changed use the property `border-color`.

```
.border{ border-color:rgb(208, 164, 165) }
```

If you want to add a box shadow in that color use:

Here you see how a box with a 4 pixel `rgb(208, 164, 165)` colored shadow looks like.

```
.boxshadow{ -moz-box-shadow:4px 4px 4px  
4px rgb(208, 164, 165); -webkit-box-  
shadow:4px 4px 4px 4px rgb(208, 164, 165);  
box-shadow:4px 4px 4px 4px rgb(208, 164,  
165) }
```

Background

The CSS property to change the background color of an element to XYZ 46.0794, 42.6774, 41.4062 is called "background". The background property can be set on classes, ids or directly on the HTML element.

```
.background, #background, body{  
background: rgb(208, 164, 165) }
```

If only the background color should be changed can be used:

```
.background{ background-color: rgb(208,  
164, 165) }
```

This example shows the color as background, it is applied via the CSS property "background".

To optimize and compress your CSS code, you can use our [online CSS compressor and optimizer](#) based on csstidy. If you want to create a linear or radial gradient as background or border, check our [CSS Gradient Generator](#).

Hey! You found this booklet interesting? Support Converting Colors with the new Membership Option!

The pro membership hides all ads, plus gives you double the colors in the color bucket, and more awesome pro features!

[Learn more, Memberships starting at \\$2.50/m!](#)

**Follow me
on Twitter!**

@ConvertingColor